

Tod Creek Flats



GREEN TREE FROG (*Hyla cineria*)



BALD EAGLE (*Haliaeetus leucocephalus*)

AN INTEGRATED WATER MANAGEMENT ACTION PLAN.

In 2008, FRIENDS OF TOD CREEK WATERSHED and PENINSULA STREAMS SOCIETY in collaboration with the DISTRICT OF SAANICH identify how the Tod Flats area functions compared to historical observations.

The assessment is part of an action plan to restore the ecological integrity and hydrological function of Tod Flats.

"A holistic approach has been taken in rehabilitation of Tod Flats where agriculture, wildlife habitat, aesthetics, social values, and flood control all carry equal weight."

- FRIENDS OF TOD CREEK WATERSHED

THE GOAL - OPTIMIZE NATURAL VALUES & LAND USES.

The INTEGRATED WATER MANAGEMENT PLAN integrates and optimizes:

- land uses for agriculture
- flood plain management
- wildlife & fish habitat
- economic viability
- pollution abatement

2015 - IMPROVEMENTS

A new channel is dug and edged with a new berm to improve hydrological function. In the winter, the storm water will overtop the berm flooding the Flats. Two large culverts positioned under the berm draw the falling water and guide fish trapped on the Flats back into Tod Creek.

LAND IS MANAGED TO FIT NATURAL CONDITIONS.



A stable land base above high water creates opportunities for small organic farms that use natural techniques which prevent soil depletion. The farms need less energy to operate, they avoid the use of harmful pesticides, and produce chemical-free nutritious food.



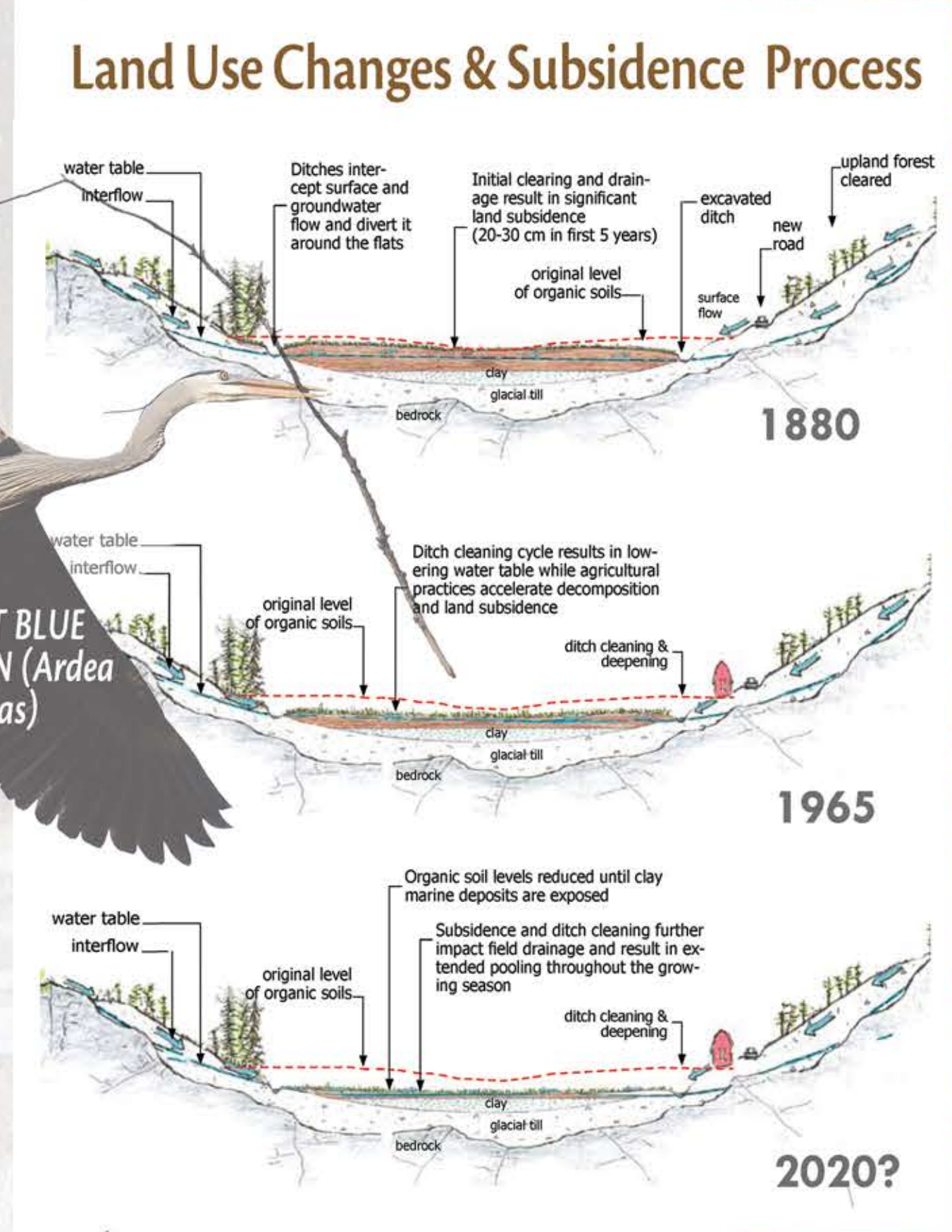
2015 Stream Channel deepened; banks reshaped & planted.

New Berm & Culverts

Seasonal Flooding provides a microhabitat for 2 endangered plant species (*Callitriche marginata* & *Bidens amplissima*).

Future Channel Improvements

The INTEGRATED MANAGEMENT PLAN increases the amount, quality and permanency of stream, riparian, and mudflat habitat.



GREAT BLUE HERON (*Ardea herodias*)

WILDLIFE HABITAT

Populations of waterfowl including Great Blue Heron, Canvasback, Wood Ducks, Mallard, Redhead Ducks, Trumpeter Swans, resident songbirds and raptors use the flooded fields.

The creek has historically been a spawning site for Cutthroat trout and salmon.



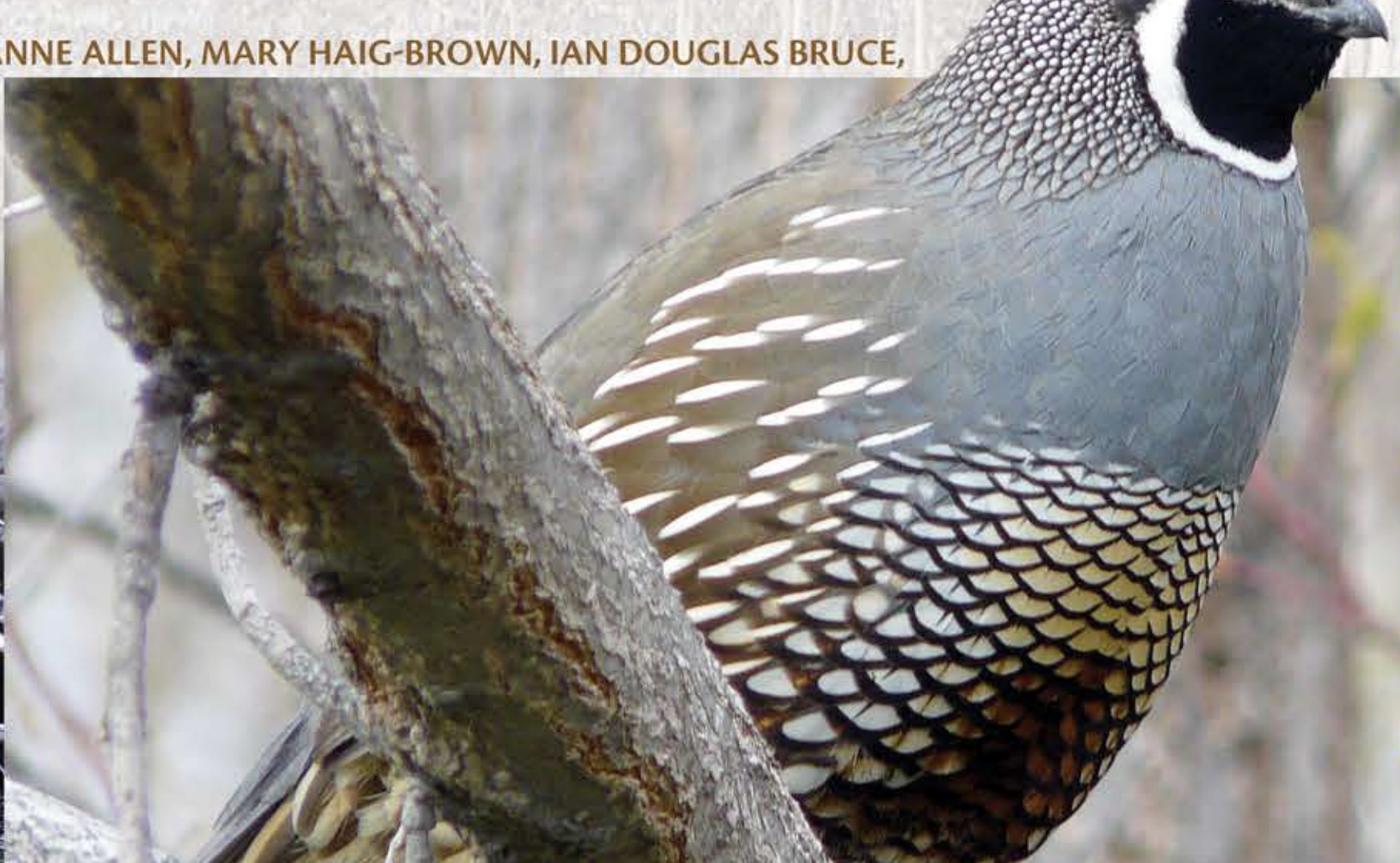
CUTTHROAT TROUT (*Oncorhynchus clarkii*)

PHOTOS COURTESY OF: SAANICH PARKS, ANNE ALLEN, MARY HAIG-BROWN, IAN DOUGLAS BRUCE,

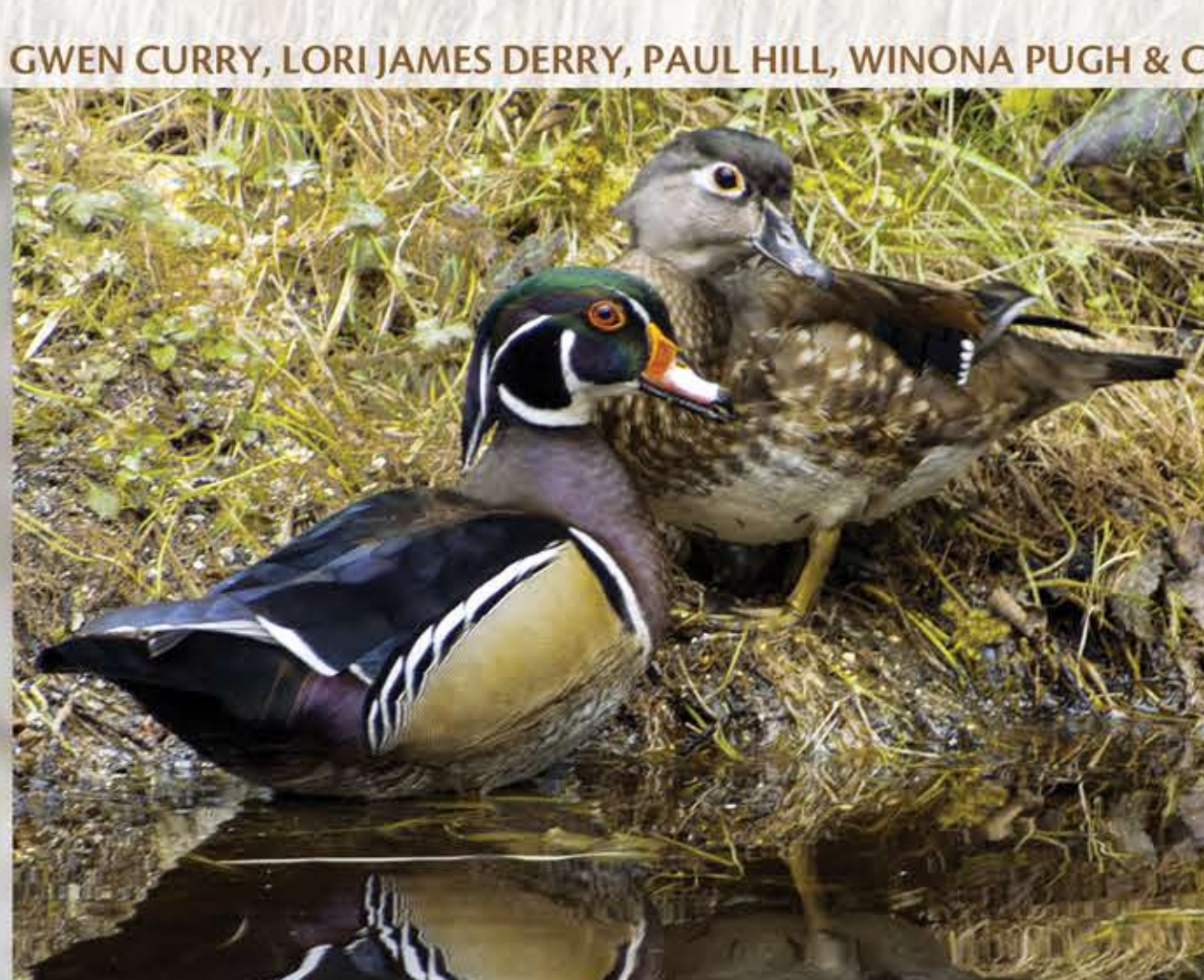
GWEN CURRY, LORI JAMES DERRY, PAUL HILL, WINONA PUGH & CARMEL THOMSON.



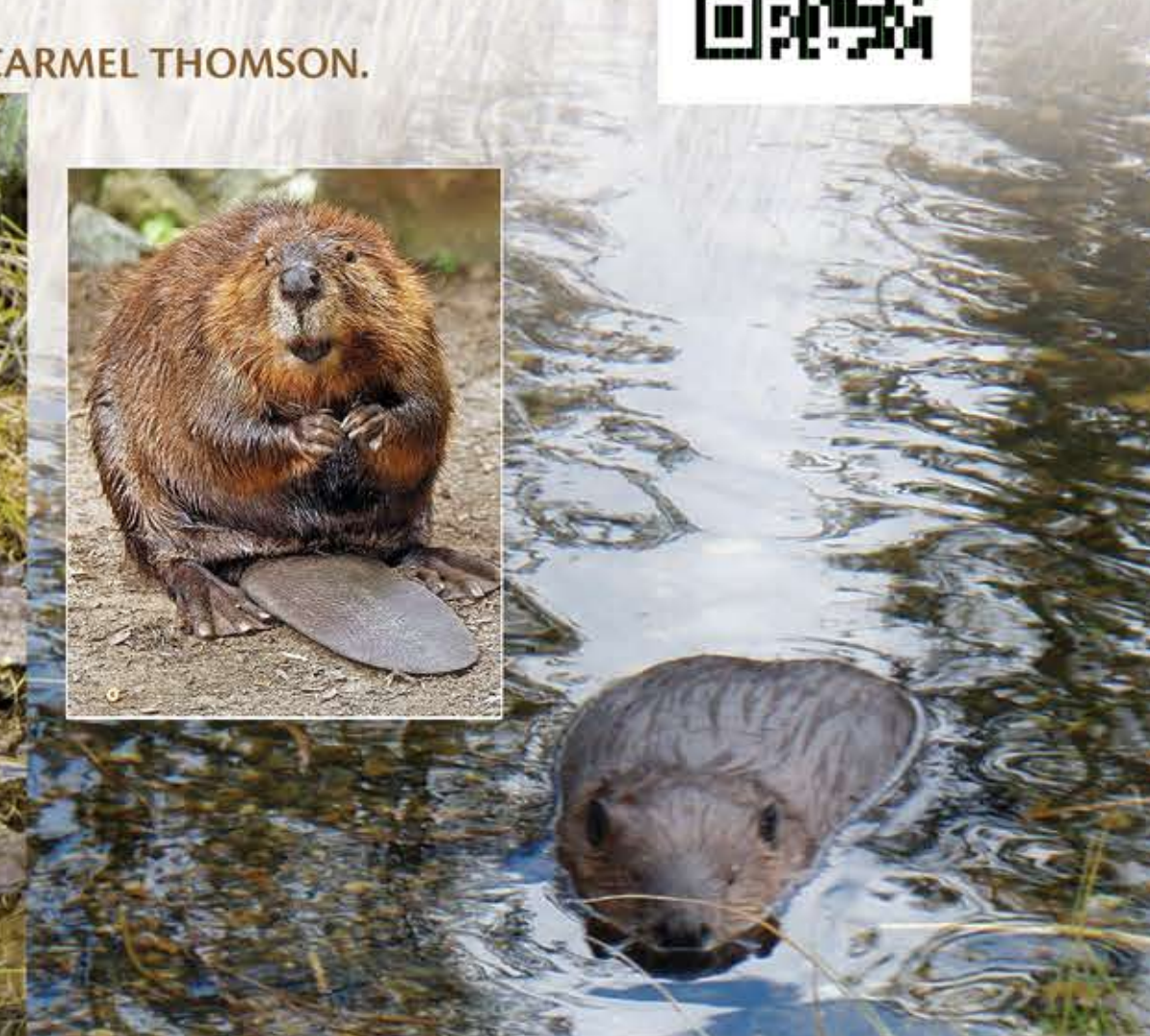
RIVER OTTER (*Lontra canadensis*)



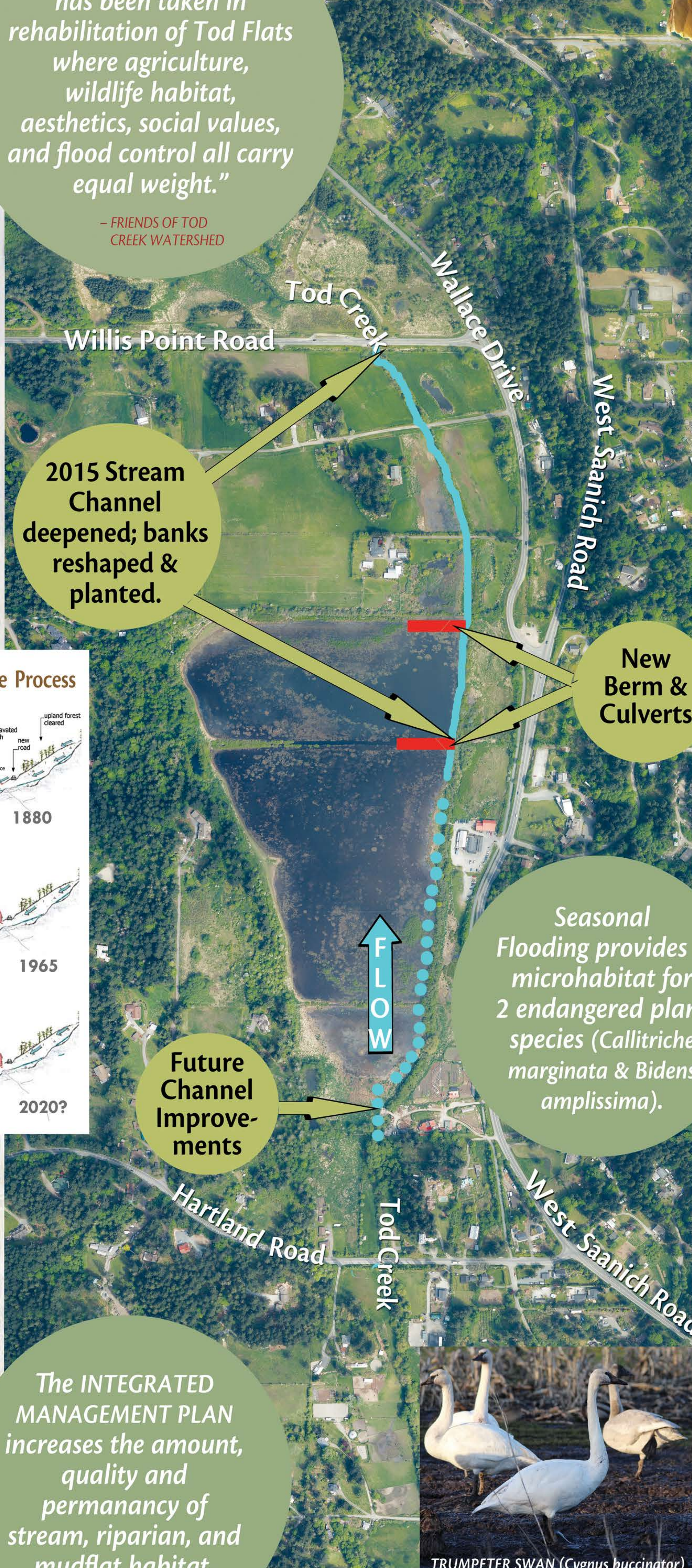
CALIFORNIA QUAIL (*Callipepla californica*)



WOOD DUCK (*Aix sponsa*)



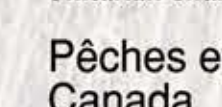
BEAVER (*Castor canadensis*)



THIS PROJECT IS MADE POSSIBLE BY FRIENDS OF TOD CREEK WATERSHED, PENINSULA STREAMS SOCIETY & THE DISTRICT OF SAANICH. saanich.ca | peninsulastreams.ca | todcreekwatershed.ca



Fisheries and Oceans Canada



Pêches et Océans Canada

