

Questions, Answers and Tips for the [interactive mapping tool](#)

These guidelines are meant to assist you in using our interactive mapping tool (called our [Community StoryMap](#)). The information gathered from the StoryMap will inform Saanich's [Urban Forest Strategy review](#) and [the Biodiversity Conservation Strategy](#).

What is this interactive mapping tool for?



The tool will enable people to show locations in Saanich where they value trees and biodiversity as well as threats and areas in need of improvement. This information will be used to inform the [Urban Forest Strategy review](#) and [the Biodiversity Conservation Strategy](#) initiatives to help Saanich manage its urban forest and biodiversity into the future.

What are the green stars and red diamonds? Who submitted them?

Each symbol represents areas in Saanich that are valued (green star) or of concern (red diamonds.) They are submitted by individuals/members of the public (user-generated). More symbols will appear as more people participate, with a slight delay between submission and publication. You can click on the symbols to learn more about those submissions.

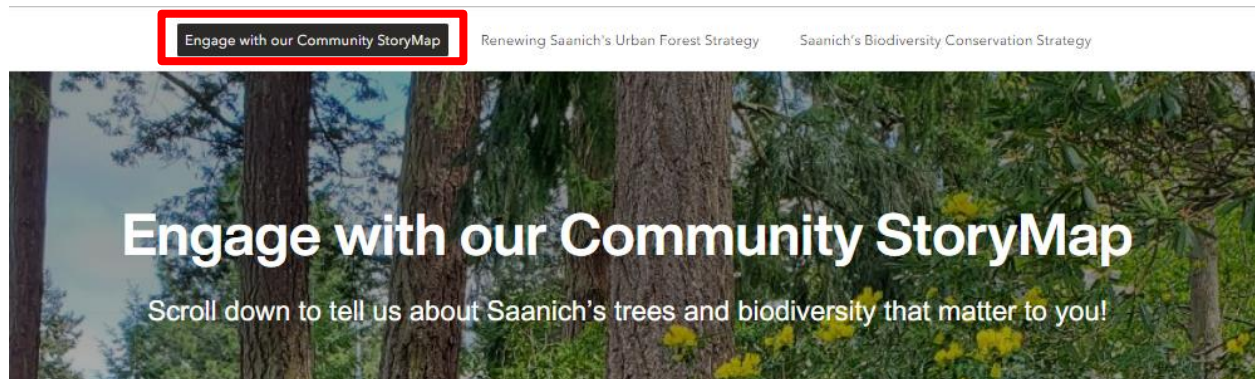
Locations submitted by community members

The place I want to share is:

-  Valued places
-  Places that could be improved and/or are threatened in some way (e.g., threat to its health or of loss)

Tips on how to participate and navigate the interactive mapping tool

The mapping tool provides instructions on how to use the interactive map. Click on the tab that says "Engage with our Community StoryMap" to learn more (highlighted in red in the picture below).



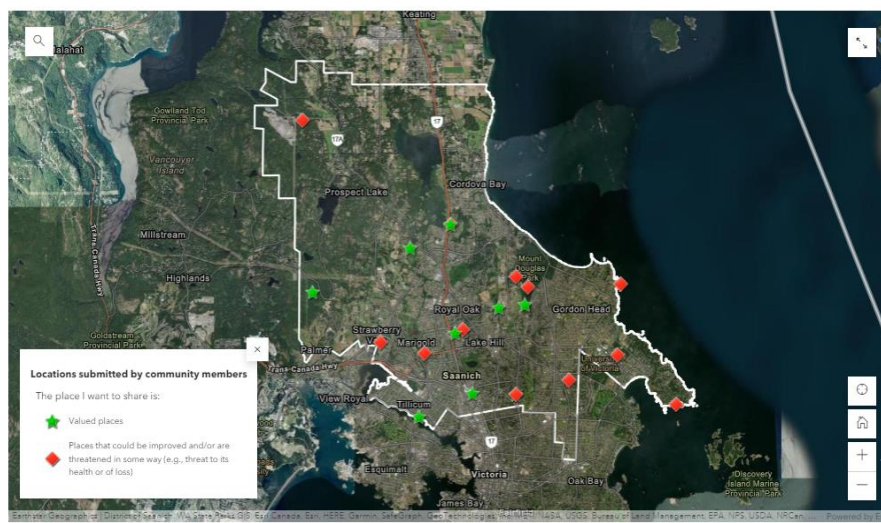
The interactive mapping tool uses the same functions as any mapping system (you can zoom in and out to change the scale and help orient yourself).

Navigating the mapping tool

When you are on the mapping tool, review the “How to use the mapping tool” section for help. You start by answering the “Mapping tool questions” before placing a mark on the map. Here are some instructions to get you started. Once you learn these basic steps, it should be easy to share your feedback.

Step 1: go to the mapping tool by clicking on this [link](#)

Step 2: scroll down until you see a map (note the picture below is not the tool, it is only provided to help you with the search image).



Clicking this symbol makes your window bigger and smaller

Navigation tools (to zoom in and out) locations might change but the symbols will be there. The “home” will bring you back to original scale (all of Saanich)

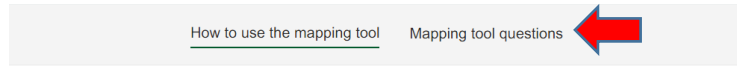
- Familiarize yourself how to zoom in and out (+ and -)
- If you click and hold your left mouse button, you can reorient the center of the map anywhere in the window.
- Double-clicking on the map will zoom in closer and give you a finer scale
- Hitting the home symbol will bring you back to the original scale (whole map of Saanich)

You can view submissions by clicking on the red diamonds or green stars.

To make your own submission (add a green star or red diamond):

Step 1 go to the mapping tool by clicking on this [link](#)

Step 2: either click on the “click here” in the “How to use the mapping tool” instructions, or scroll down to the “mapping tool questions”



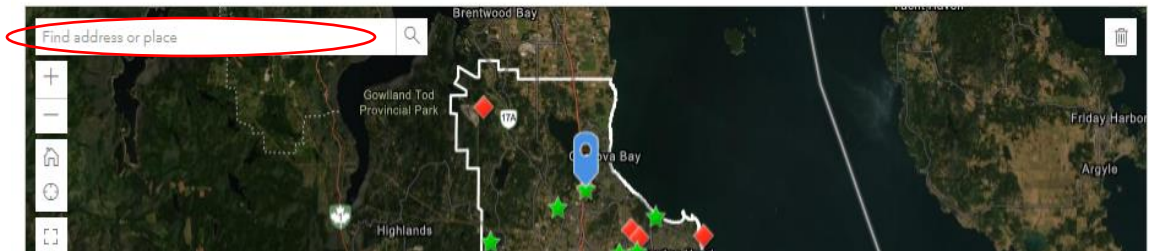
How to use the mapping tool

This map showcases places of importance for the urban forest, natural areas and biodiversity as submitted by community members. To submit a new location or feature for this map, scroll below this map or [click here](#) to fill out a form and identify the location.

Step 3: fill out the questions until you get to “mapping” the place about which you are giving feedback. Click on the map in the general area and the blue pin will appear. You can move the blue pin by zooming in and out or dragging it. You can also search by address or zoom in first and then click and place your blue pin (see below, but please note this is a picture for illustrative purposes only and not the interactive map). You may add as many submissions as you wish.

The place I am talking about is located:

To find the location of the place you want to identify, either click and drag the map, use the +/- signs on the left corner, or enter the address. Click once on the location to select it. Once selected, a blue pin will appear.



Why is it the same map for both initiatives (the [Urban Forest Strategy update](#) and the [Biodiversity Conservation Strategy](#))?

While both initiatives are unique and separate processes, the observations are related to each other. When submitting your feedback you can choose if you’d like your feedback to go to either or both of these strategies.

How can I go see what others have submitted on the map?

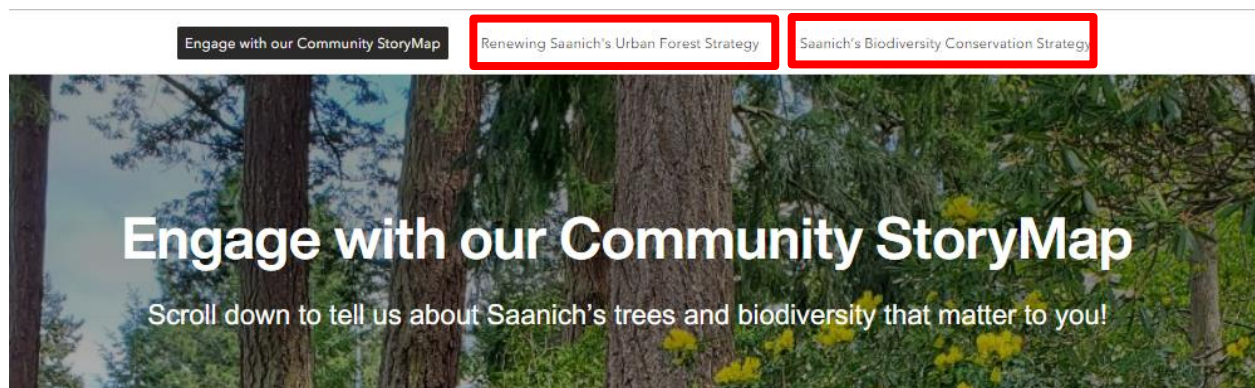
Click on a green star or red diamond to see the submission. The mapping tool provides the option to upload a picture, so there may be more information on the submission itself.

In terms of seeing the submissions in-person, this tool is meant to collect feedback and is not meant to direct people to the observations on the ground. This is because some submissions may be on private property or may be difficult to access. It may

be possible to visit the places located in public parks – if you choose to do this, please stay on designated trails and respect any directional signs you may encounter (such as closures).

How do I learn more about these initiatives?

There is more information on Saanich’s website here: [Biodiversity Conservation Strategy](#) or [Urban Forest Strategy review](#) (click on either of these to be redirected to the webpages). You can also access more information about these initiatives by clicking on tabs at the tops of the interactive mapping tool (highlighted in red on the image below).



I’m not fond of this tool, how else can I participate?

There will be other engagement opportunities for both the [Biodiversity Conservation Strategy](#) and the [Urban Forest Strategy update](#). Check back on the webpages for future opportunities. Saanich will provide ongoing information via social media, news releases and regular website updates.

Will there be more opportunities to give my feedback?

The interactive mapping tool is only the first stage of engaging people to contribute to developing both the [Biodiversity Conservation Strategy](#) and the [Urban Forest Strategy update](#). There will be other ways to provide your feedback including surveys and opportunities to review the drafted reports as they become available.

The question I came here for wasn’t addressed, what can I do?

If you have more questions about either of these initiatives or the interactive mapping tool, contact Saanich Parks by email (parks@saanich.ca) or phone (250-475-5522) so we can help direct your inquiry.