

# Lochside Park Fowler Park

May 2, 2023



The Park Renewal Project focuses on replacing the aging playground and tennis courts at Lochside and utilizing the open space at Fowler Park more effectively. The sports fields are not part of this project as they are well established anchor facilities for the community.



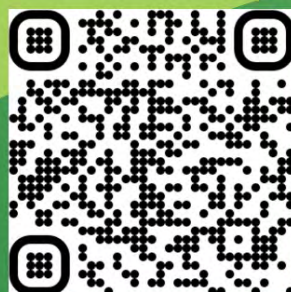
## Regional Context



Scan for Project  
Webpage



## Park Location



Scan for online  
questionnaire



# Lochside Park Fowler Park

May 2, 2023

## What we heard from you.

### WSÁNEĆ Workshop



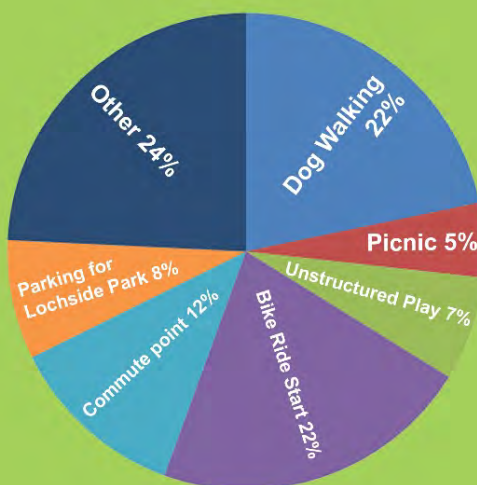
## Online Questionnaire

165 Respondents

### Reasons for visiting Lochside Park



### Reasons for visiting Fowler Park



### Activities to add to Lochside and Fowler Park

- picnic area
- fenced dog area
- pickleball courts
- place to watch sports
- looped walking paths

### Youth friendly suggestions

- basketball
- skate park
- challenging climbing
- outdoor fitness equipment
- bike skills
- seating in shade

### Older adult/senior friendly suggestions

- comfortable benches
- seating in shade
- lighting for evening walks
- pickleball/tennis
- washrooms
- picnic shelter

- 19% Have never been to Fowler Park
- 33% Drive to the Park
- 39% Use Lochside Park to access the Lochside Trail
- 39% Visit Lochside Park on a regular basis
- 52% Use Fowler Park to access the Lochside Trail
- 58% Walk or Bike to the Park

### Things to add/change about the 2008 Fowler Park concept plan

- fenced dog area
- pickleball courts
- place to watch sports
- looped walking paths
- playground
- picnic shelter
- bike repair station
- drinking fountain
- keep/increase natural areas

### Things to change or improve at Lochside Park

- playground
- tennis/pickleball court
- washrooms
- picnic shelter
- more tables/seating
- bike skills/skatepark
- better paths for wheelchairs
- more parking
- more dog friendly



Waymark  
WSÁNEĆ  
Welcome Totem  
Sidney

Create a safe and welcoming place for cultural harvesting activities

Can parks be open for Tribal Schools land based learning?

Gathering places to share a meal helps everyone feel welcome and engaged

Always look for opportunities to add place names for an area

PKOLS (Mt Douglas) Park  
ŠNEU, EU, EĆ - Arbutus Cove  
TIXEN - Cordova Spit

How can we work towards making sportsfields and other park spaces available for Indigenous events?

Seeing Indigenous artwork in a place gives a sense of belonging

TEL, ILĆ (Cordova Bay) is a place of rich history for WSÁNEĆ people. Need to have some recognition along the bay with either Totem Pole, artwork or interpretive signs.

Interpretive signs such as this one illustrate how important it is for people to understand the land and to take better care of the park



# Lochside Park Fowler Park

May 2, 2023

# Considerations for proposed Pickleball courts

## Saanich Pickleball

### Outdoor Pickleball Courts

- 9 tennis courts lined for pickleball:
  - Copley West (2 courts)
  - Hampton (2 courts)
  - Rosedale (2 courts)
  - Majestic (1 court)
  - Prospect Lake (2 courts)



### McMinn - 2 dedicated courts

Play is restricted to 9 a.m. to 8 p.m. daily.

### Tolmie Park - 2 dedicated courts.

Courts at Tolmie Park only open as per the below schedule:  
 Monday 9 a.m. to 8 p.m.  
 Wednesday 9 a.m. to 8 p.m.  
 Friday 9 a.m. to 8 p.m.  
 Saturday 9 a.m. to 5 p.m.  
 CLOSED TUESDAY, THURSDAY, SUNDAY

### Indoor Pickleball Courts

- GR Parkes Recreation Centre
- Cedar Hill Recreation Centre
- Saanich Commonwealth Place



## Noise Concerns

### Tolmie Park

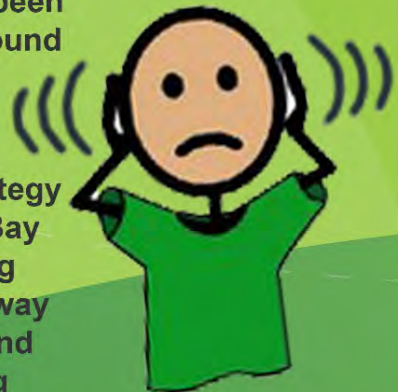
- Capital Regional District's first dedicated pickleball courts
- shortly after installation received noise complaints – due to courts being placed close to neighbouring homes
- from the start the courts were and still are a popular place to play
- Accoustifence was installed but only moderately help in this location
- led to the development of Pickleball Guidelines for Saanich which were subsequently approved by Council
- ongoing concern over noise prompted time restrictions
- surrounding residents would like courts closed

### McMinn Park

- Saanich's second set of dedicated pickleball courts which were placed further from homes
- there have been fewer noise complaints at this location
- courts are popular plus there are two additional shared courts at this park
- temporary sound barriers and tarps have been trialed to see if there is a reduction in sound

### Regional Context

- Saanich is participating in a Regional Strategy along with Victoria, Esquimalt and Oak Bay
- Goal of the study is to address the growing popularity of the sport of pickleball in a way that balances the needs of sport users and grass roots participation while mitigating potential impacts to the community which will include consulting players about court booking and allocation processes.
- While this study is happening concurrently with the development of Fowler Park, the hope is that it will complement the results of the strategy.



## Sound Study

### Summary

- RWDI conducted an acoustical study to predict future pickleball noise levels for two proposed pickleball layout concepts.
- The study included measuring pickleball noise levels, monitoring existing background noise levels, developing a noise model, predicting pickleball noise levels, and developing noise control recommendations.
- RWDI visited Fowler Park to conduct mock pickleball noise measurements and monitored existing background noise levels in the area using a sound level meter.
- From the monitoring results and observations, RWDI noted that the overall acoustical environment is dominated by traffic along Fowler Road and is generally steady between approximately 7 am and 6 pm but gradually decreases throughout the evening/night as traffic volumes decrease.
- For pickleball noise levels to be inaudible, they should not exceed 31 dBA, 36 dBA for faintly audible, and 41 dBA for moderately audible levels during 7 am to 6 pm.
- Pickleball noise was moderately audible when there was no traffic along Fowler Road, and it was inaudible when there was traffic along Fowler Road.
- RWDI used modelling to predict pickleball noise levels to nearby residences.

### Recommendation

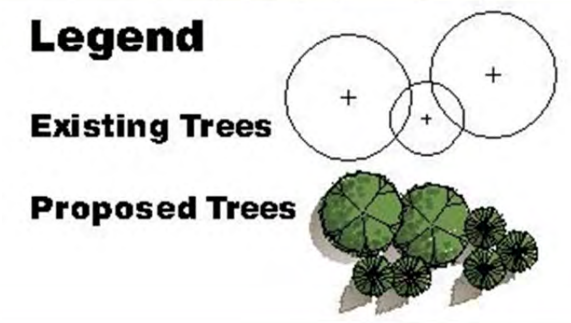
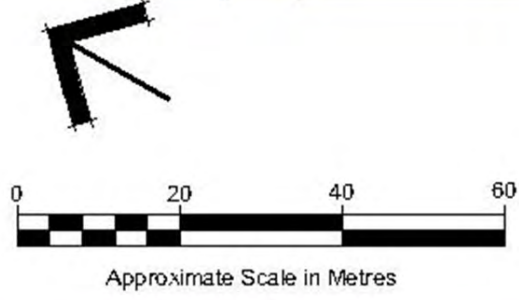
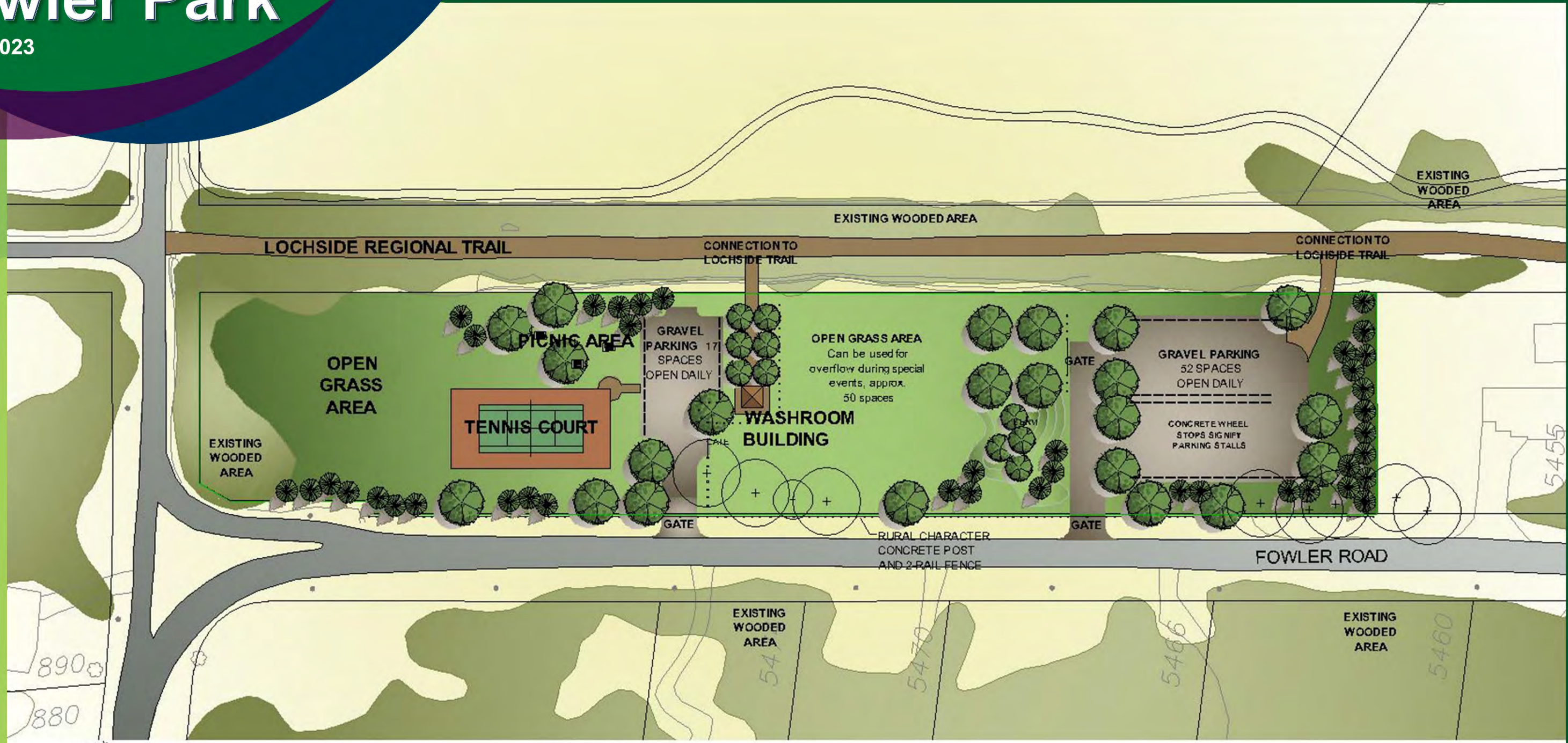
- Implementing noise control measures such as sound barriers, use of acoustic materials, and the use of quiet pickleball paddles to further reduce pickleball noise levels.
- Consider time restrictions for pickleball activity.



# Lochside Park Fowler Park

May 2, 2023

# 2007 Fowler Park Concept Plan



**November 28, 2007**

**Fowler Road Park  
Concept Plan**



Parks hosted two public meetings and presented two options for the park. There was tremendous support from the neighbourhood and the Cordova Bay Association for the option which provided parking and preserved the central area as open space. The Parks, Trails and Recreation Advisory Committee endorsed the Concept Plan at their March 2008 meeting and Council subsequently approved the plan in August 2008.

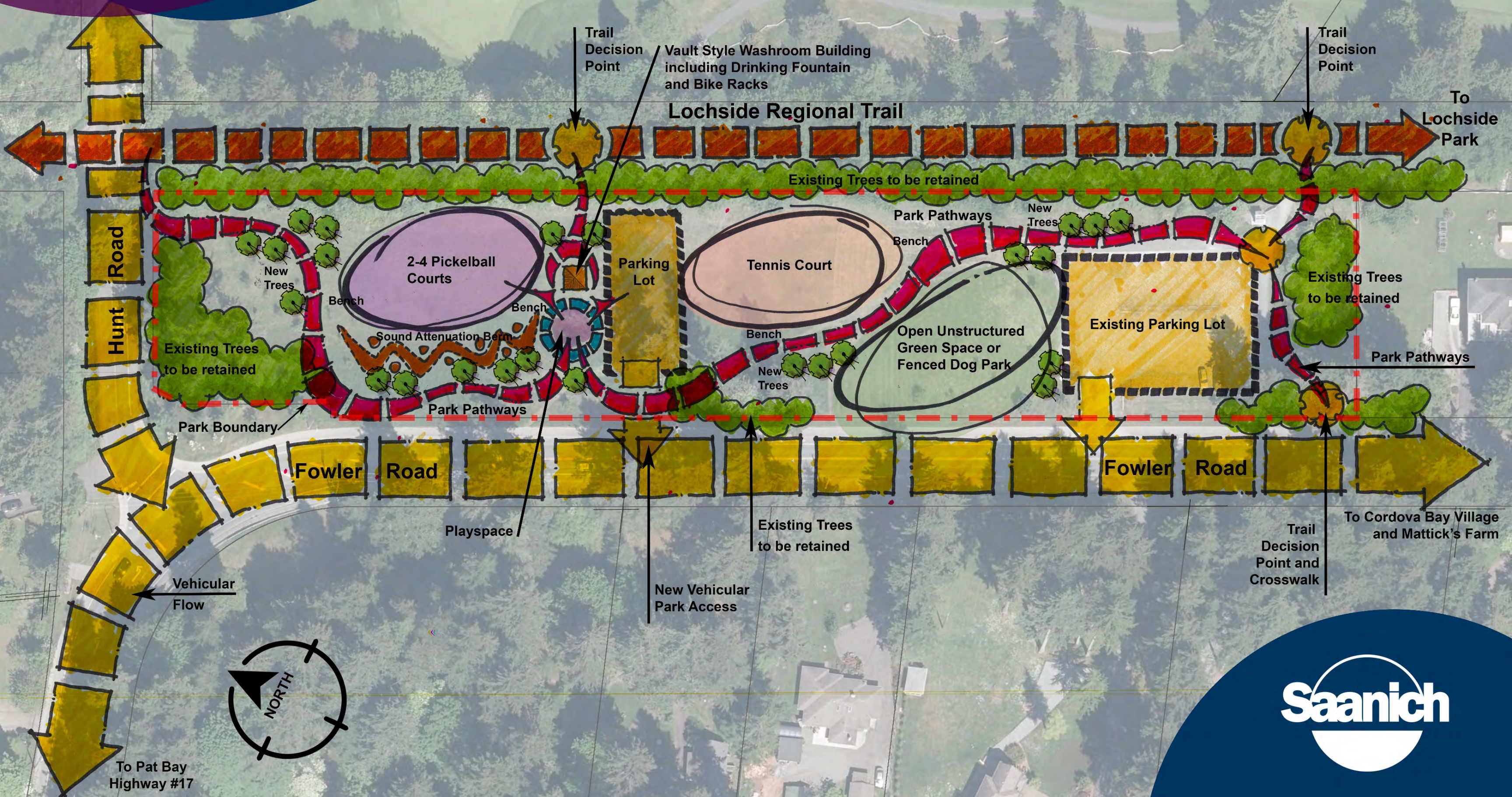
# Fowler Park

## Option 1 Concept Plan

### Centralized Features

May 2, 2023

Cordova Bay Golf Course



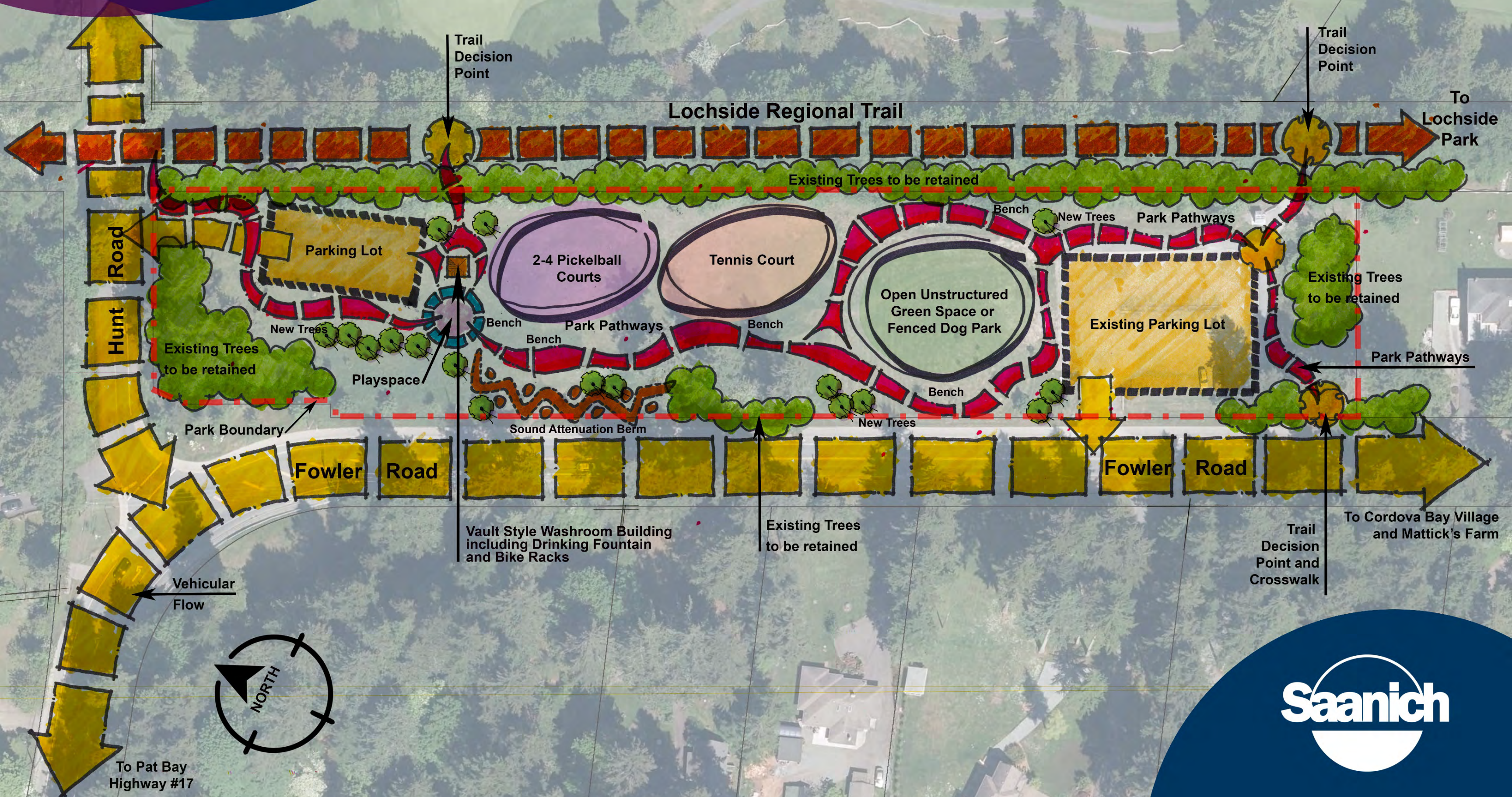
# Fowler Park

## Option 2 Concept Plan

### Linear Features

May 2, 2023

Cordova Bay Golf Course



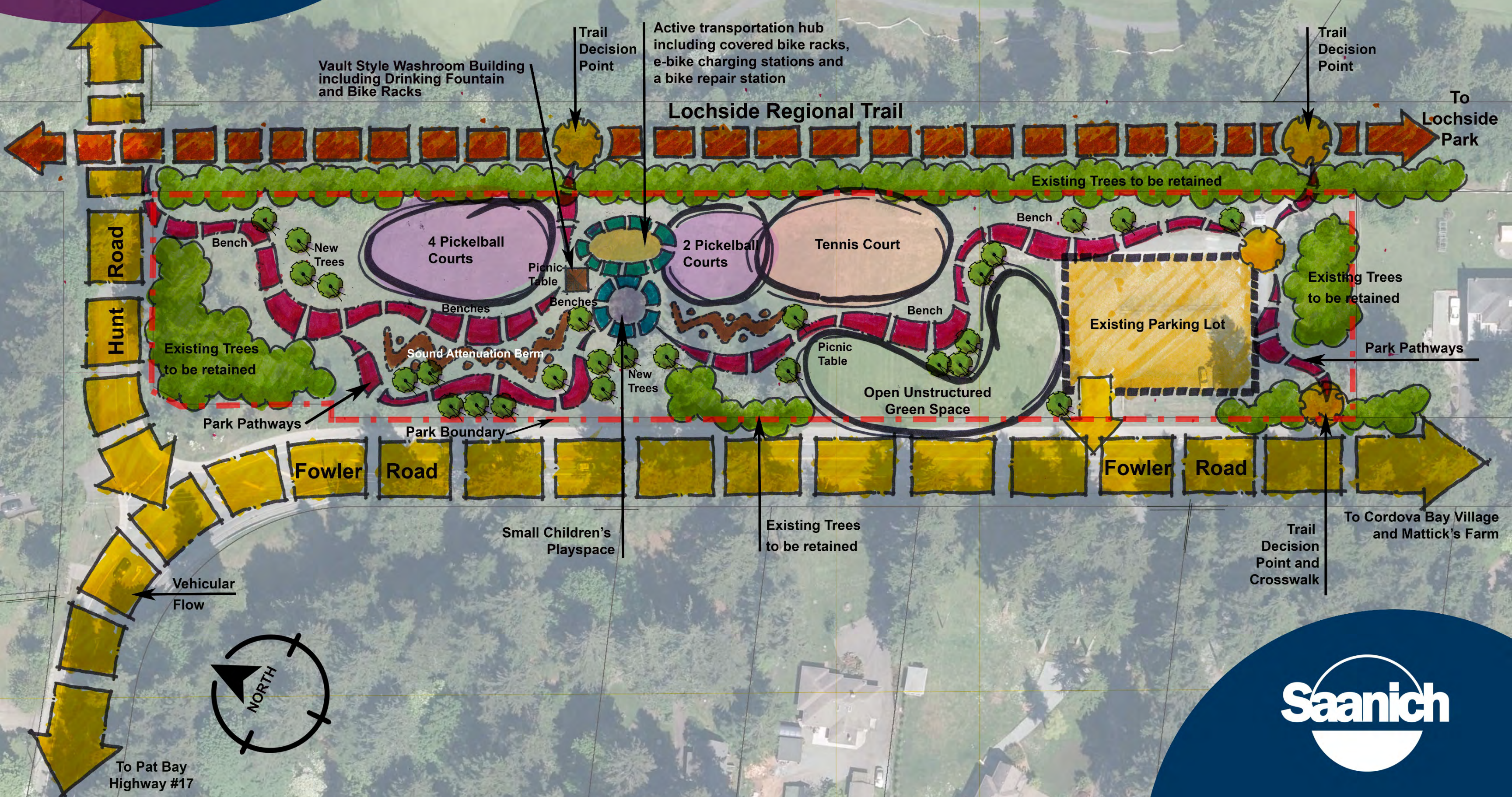
# Fowler Park

## Option 3 Concept Plan

### Active Hub

May 2, 2023

Cordova Bay Golf Course



# Lochside Park

## Option 1 Concept Plan

### Central Play

May 2, 2023





# Lochside Park

## Option 2 Concept Plan

### Gathering Centre

May 2, 2023



Existing Softball Diamond

Existing Softball Diamond

Existing Trees to be retained

Existing Trees to be retained

To Soccer Fields

Trail Decision Point

Existing Bench

Park Pathways

Existing Softball Diamond

Existing Open Green Space

Existing Picnic Tables

Gathering Space

Welcome Circle

New Trees

Picnic Table

Picnic Table

Playground  
2-5yr old structure  
5-12yr old structure

Existing Tree to be retained

Existing Clubhouse and washrooms

Bench

Youth/Fitness Space

Bench

Bench

Park Pathways

Existing Trees to be retained

Parking Lot

Park Boundary



To Fowler Park

Lochside Regional Trail

Lochside Drive



# Lochside Park

## Option 3 Concept Plan

### Park & Play

May 2, 2023



# Lochside Park Fowler Park

May 2, 2023

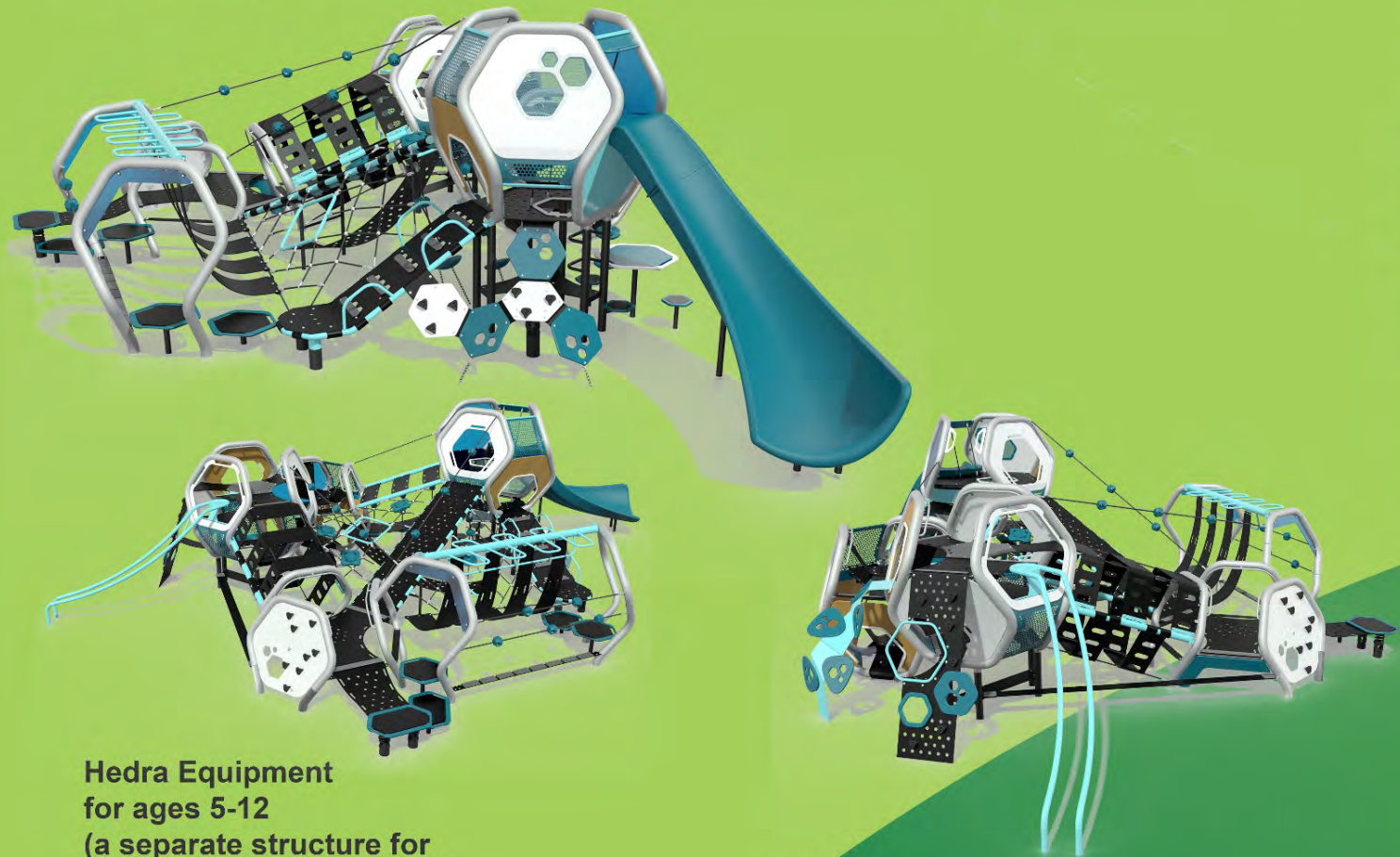
# Possibilities

## Youth Amenities

### Playground



Forma Equipment for ages 5-12 (a separate structure for ages 2-5 will be included)



Hedra Equipment for ages 5-12 (a separate structure for ages 2-5 will be included)



Seating



Climbing



Game can be enjoyed by people of all ages and abilities



Features are modular and can be moved to suit design needs or replaced with other features

