

ROWAN PARK

Area: Shelbourne

Location: Rowan Street or Thistle Street

Size: approx. 0.07 ha

Amenities:



Green Space



Trails



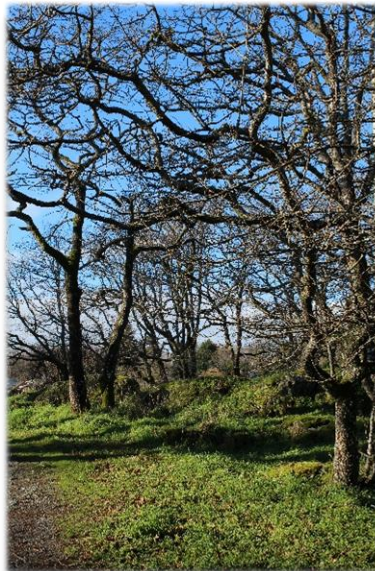
Dogs On-Leash



Dog Leash-Optional
6am to 9am Only

About the Park:

This small natural area connects Rowan Street to Thistle Street with a rustic gravel path.



Dogs must be on a leash at all times, except between the hours of 6am and 9am, when they are permitted to be off-leash, but under control.

Google map link: <https://goo.gl/maps/7s5pD73uUaC2>

District of Saanich
Parks
1040 McKenzie Ave.
Victoria BC V8Z 2L4

t. 250-475-5522 / f. 250-475-5525
e. parks@saanich.ca
saanich.ca

