

# Lambrick Park

## CAMPUS RENEWAL PROJECT

*Help us re-envision Lambrick Park Campus as a key community asset that meets the needs of our evolving community.*

**We want to hear from you!**

### ABOUT THE PROJECT

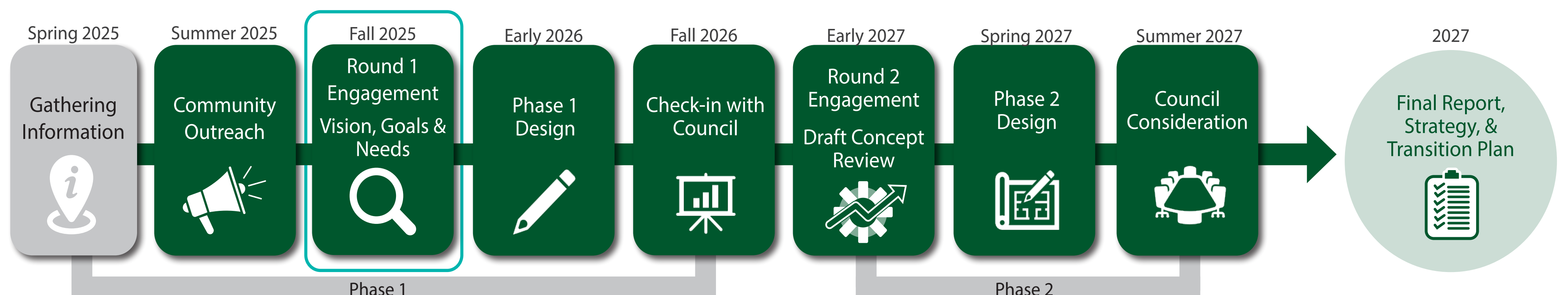
Lambrick Park serves the surrounding community with many open spaces and natural areas, the Gordon Head Recreation Centre, sports fields, courts, and many other recreation amenities. The Park is directly adjacent to Lambrick Park Secondary School and Gordon Head Middle School.

#### The purpose of the Lambrick Park Campus Renewal Project is to:

- » Establish a long-term vision for the future of the Park.
- » Modernize and expand recreation amenities.
- » Improve accessibility and safety for all users.
- » Enhance connectivity to surrounding areas.
- » Support a growing and diverse community, and,
- » Promote environmental stewardship.



### PROJECT PROCESS AND TIMELINE



### GOALS FOR TODAY

We are in an active engagement phase, and want to hear from you! **This first round of engagement focuses on establishing the vision, goals, and needs for Lambrick Park by evaluating the opportunities and constraints of the area.** Your input will be summarized and integrated into the design stage in Phase 2.



# Lambrick Park

## CAMPUS RENEWAL PROJECT

### History of Park

*We acknowledge and respect that the District of Saanich lies within the territories of the Ləkʷəŋən peoples represented by the Songhees and Xʷsepsəm (Kosapsum) Nations and the ƳSÁNEĆ peoples represented by the ƳJOŁEŁP (Tsartlip), BOĆÉĆEN (Pauquachin), STÁUTƳ (Tsawout), ƳSIKEM (Tseycum) and MÁLEXEŁ (Malahat) Nations.*

The oral histories of the Ləkʷəŋən and ƳSÁNEĆ peoples tell of their presence in the region since time immemorial. Following the end of the last ice age some 14,000 years ago, the glaciers that covered south Vancouver Island had retreated. Indigenous people's history of living on the south coast from these times and onwards is reflected through oral histories and visible in the archaeological record.

Following colonization, farmers settled on the land that is now Lambrick Park, and began clearing it. Arthur and Clara Lambrick, who had farmed the land since 1925, sold their property to the District of Saanich and School District 61 in 1966. Development then began to establish a recreation centre and park for the rapidly developing area.

Gordon Head Recreation Centre opened in 1971, followed by Lambrick Park Secondary School in 1976. As Gordon Head was being developed with single-family homes throughout the 1970's and 80's, Lambrick park served as an important sports and recreation hub for a changing and diverse community.

The Park is now home to several soccer fields, baseball diamonds, tennis courts, a lawn bowling club, and more. Over the years, various developments have created an inefficient layout comprised of five parking lots, isolated buildings and single-purpose facilities. Many of the park facilities are over 50 years old with varying degrees of remaining useful life left.

Demographic changes in the community continue to increase demand for recreation services at the Lambrick Park Campus.

#### ARTHUR LAMBRICK

Lambrick Park is named after Arthur Graham Lambrick and Clara Lambrick, who bought the first ten acres of a dairy farm near Feltham Road in 1925, and began a 40 year career in dairy farming. Arthur Lambrick was a well-respected farmer and was also well-known for his service to the community, and served two terms as Reeve of Saanich.



**TOP LEFT:** Lambrick Farm looking from Feltham Road, 1956 (1978-001-079)

**TOP CENTRE:** Gordon Head Dairy milk cap

**TOP RIGHT:** Opening of Shelbourne Street, 1916 (1984-008-007)

**BOTTOM:** Gordon Head Recreation Centre exterior, 1970s (1982-001-023c)



# Lambrick Park

## CAMPUS RENEWAL PROJECT

### Context

#### LOCAL COMMUNITY

Lambrick Park is situated in the north end of the Shelbourne Valley, in the Gordon Head neighbourhood. Nearby University of Victoria and PKOLS (Mount Douglas Park) – the largest urban forest on the Saanich Peninsula – are both regional destinations. While Saanich as a whole has historically had a slower population growth rate than the rest of the region, more rapid growth is anticipated in all of urban Saanich in the coming years as the District works towards meeting goals related to housing supply and diversity.

#### SAANICH OFFICIAL COMMUNITY PLAN

The Official Community Plan (OCP), adopted in 2024, is the principal tool for guiding future growth and change in Saanich. A key direction of the OCP is to locate most of new housing and employment growth in Primary Growth Areas – vibrant walkable Centres and Villages linked by Corridors, frequent transit service, and All Ages and Abilities cycling infrastructure. Centre, Corridor, and Village (CCV) plans outline the more detailed plans for these areas, such as the Shelbourne Valley Plan. Originally adopted in 2017, the Shelbourne Valley Plan is currently being updated to ensure alignment with the new OCP and current needs and aspirations of the community.

The following three objectives in the OCP that are directly related to Parks,

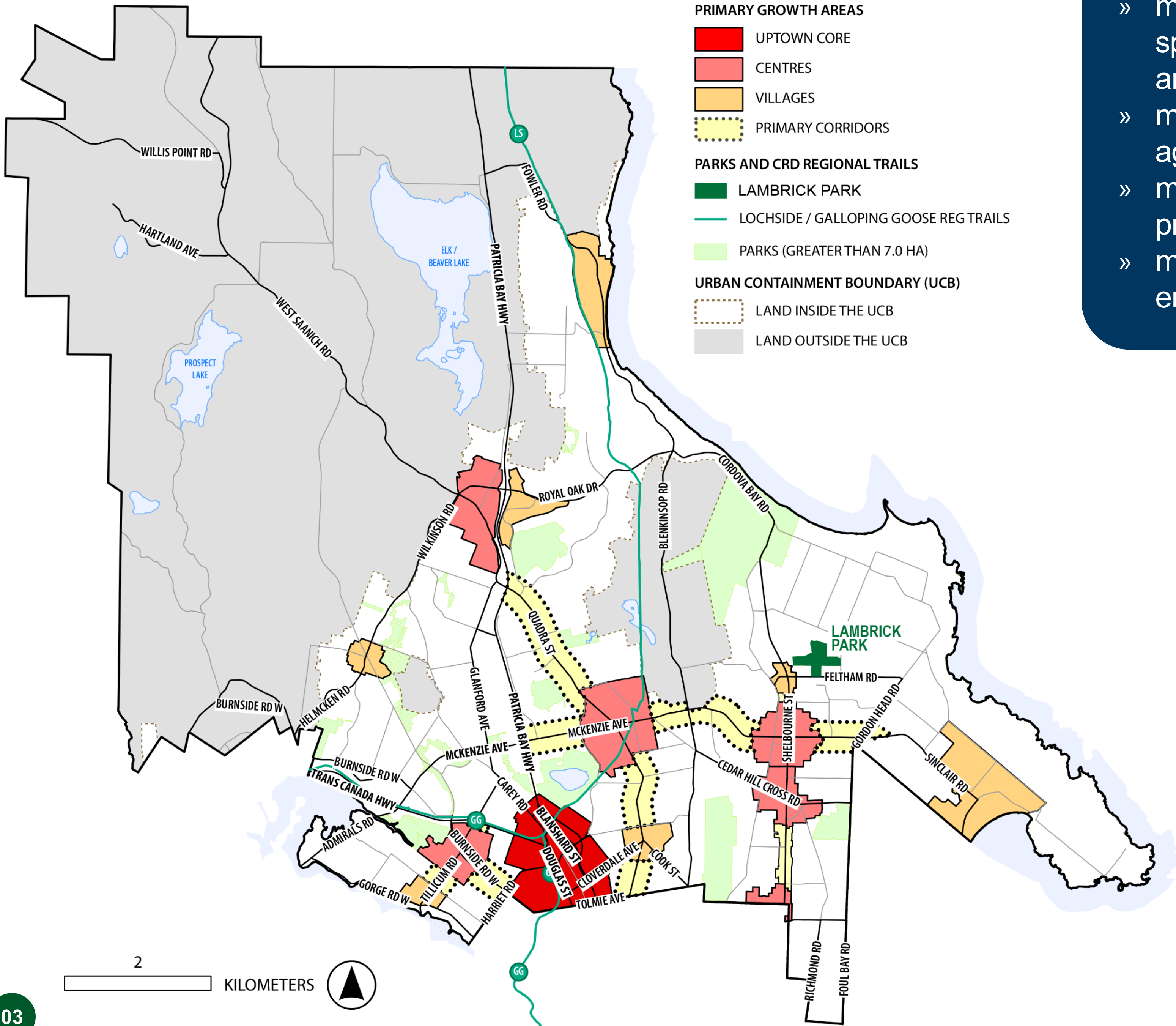
Trails and Open Space all received high levels of community support during engagement:

- Provide residents with a range of safe parks, trails, open spaces, and recreational opportunities to support active living, health, well-being and community cohesion.
- Work towards equitable and walkable access to parks and open spaces for all urban residents.
- Protect, restore and enhance natural areas, ecological function and biological diversity.

#### KEY COMMUNITY NEEDS

Planning and needs assessments over the last several years have identified key needs in the community including:

- » more wellness, fitness and sports programming to meet high demand.
- » more ice surface for ice sports needed in Saanich and Greater Victoria.
- » more supports for Saanich’s aging population.
- » more arts and culture programming.
- » more housing options, emphasizing affordability.



LEFT: Saanich OCP Primary Growth Area Future Land Use Designations



# Lambrick Park

## CAMPUS RENEWAL PROJECT

### The Park Today

WHY CALL IT A “CAMPUS”?

The District of Saanich is home to four recreation centres, all located within parks. These sites offer a multitude of amenities and activities delivered by the Parks, Recreation & Community Services department – more of a “campus” feel. In addition to the Gordon Head Recreation Centre, Lambrick Park Campus includes several recreational buildings, outdoor sports fields and courts, a variety of trails, and other amenities. This terminology shift from ‘park’ to ‘campus’ represents Lambrick’s importance as a community gathering space, sports, and recreation hub for residents District-wide.



Ball Diamonds (x5)



Soccer Fields Seasonal (x2)



Lawn Bowling Club



Tennis Courts (x4)



Lacrosse Box



Skate park



Playground



Dog Park Seasonal (x2)



Recreation Centre



Bert Richman Building



Lambrick House (1908)



Dodd House (1860)



Garry Oak trees



Trails



Parking Lots (x5)

Place a dot on what you appreciate most about Lambrick Park Campus today:

REC CENTRE	SPORTS FIELDS & COURTS	INFORMAL RECREATION	SOCIAL CONNECTION	NATURAL AREAS	HERITAGE VALUES	EASY TO GET TO

OTHER (PLEASE SPECIFY):





# Lambrick Park

## CAMPUS RENEWAL PROJECT

### Where are your favourite spaces?

Share your relationship to Lambrick Park with the colour-coded dots and sticky notes:

- Your favourite space
- Spaces you feel welcome
- Spaces you feel unwelcome
- Spaces that need improvement





# Lambrick Park

## CAMPUS RENEWAL PROJECT

### Where are your favourite spaces?

Share your relationship to Lambrick Park with the colour-coded dots and sticky notes:

- Your favourite space
- Spaces you feel welcome
- Spaces you feel unwelcome
- Spaces that need improvement







# Lambrick Park

## CAMPUS RENEWAL PROJECT

### What is your vision for Lambrick Park in 15 years?

Using your creative imagination,  
share your ideas on sticky notes for  
the experience and character of the  
Lambrick Park Campus in 2040.





# Lambrick Park

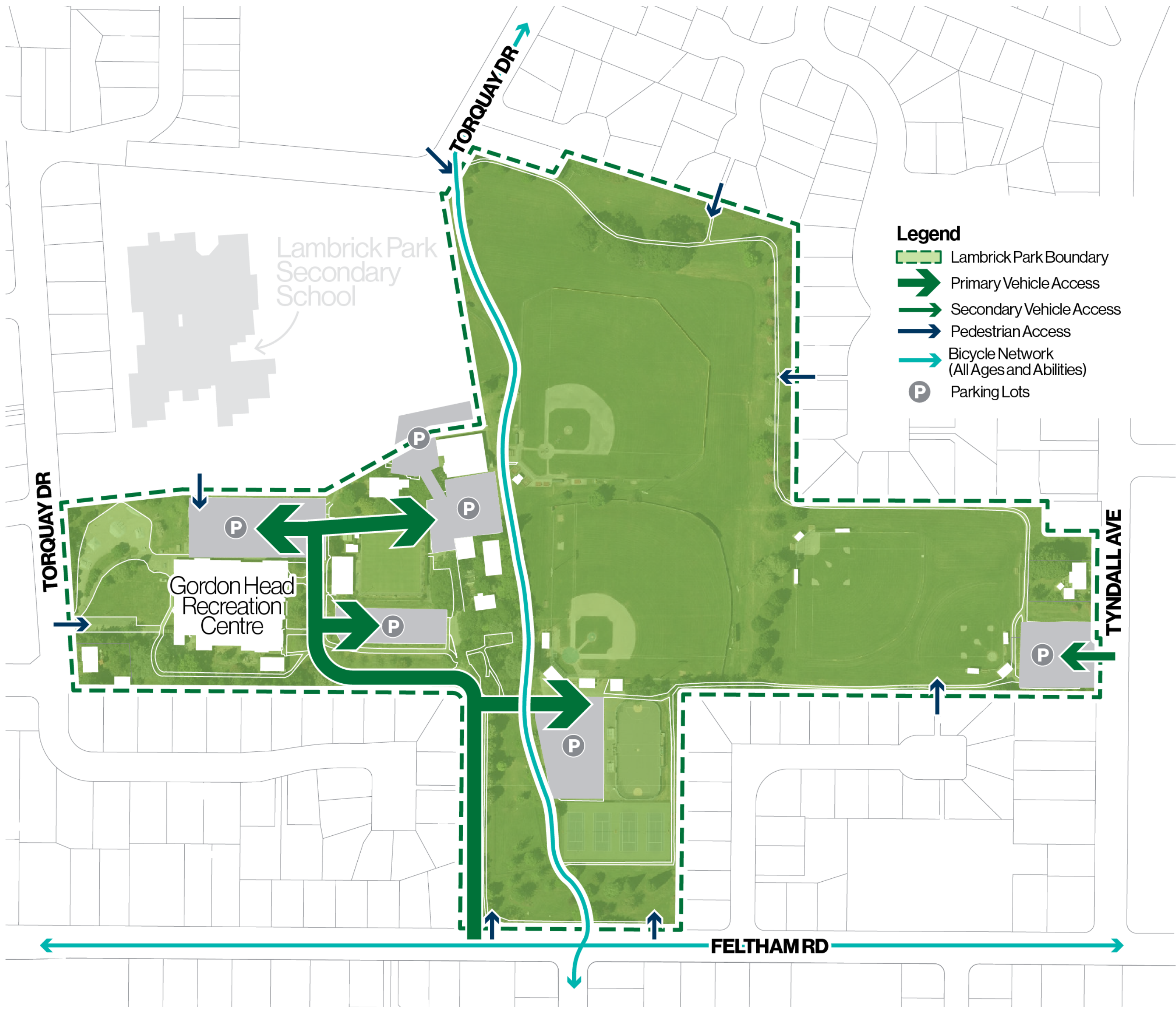
## CAMPUS RENEWAL PROJECT

### Mobility & Accessibility

A sustainable and equitable transportation network is critical to achieving climate change goals, ensuring livability and enabling residents to function and thrive in Saanich.

The map to the right shows the primary vehicle access points, multiple disconnected parking lots, pedestrian access points, and the future Planned Bicycle Network.

**MULTI-MODAL TRANSPORTATION**  
Multi-modal transportation refers to linking together various forms of transportation, such as walking, cycling, transit, and vehicle travel.



Place a dot on the ways you typically travel to the park:

	WALK	CYCLE	BUS	CAR (DRIVER)	CAR (PASSENGER)	ROLL (MOBILITY AID, ETC.)
OCTOBER - FEBRUARY the cooler, wetter months						
MARCH - SEPTEMBER the warmer, dryer months						

What would make it easier for you to access and physically navigate the Lambrick Park Campus and its amenities?



# Lambrick Park

## CAMPUS RENEWAL PROJECT

### Sports Fields & Courts

#### BALL DIAMONDS

- » Five of the 35 ball diamonds in Saanich are located in Lambrick Park.
- » Home user groups provide baseball programs for youth and adults.

#### SCHOOL DISTRICT FIELDS

- » Saanich’s two school districts manage the second-largest supply of public sports fields in the District.
- » Saanich has joint use agreements with School District 61 for field access.

#### LAWN BOWLING

- » Gordon Head Lawn Bowling Club was founded in 1976.
- » It is one of the eleven lawn bowling clubs in the Capital Regional District.
- » The outdoor bowling season runs from May to September.

#### SOCCER FIELDS

- » Two overlapping rectangular fields (one full size, one mini size) with movable goal post structures.
- » Accommodates different sports seasonally, but does not allow for simultaneous use of ball diamonds and rectangular fields.

#### TENNIS COURTS

- » Saanich has twenty-one parks with tennis courts, including several with pickleball courts.
- » Four tennis courts are located at Lambrick Park.

#### LACROSSE BOXES

- » One of the two lacrosse boxes in Saanich is located at Lambrick Park.

**SAANICH OUTDOOR SPORTS FIELD STRATEGY**

The District of Saanich is currently developing an Outdoor Sports Field Strategy. The strategy will evaluate our existing outdoor sports fields and lacrosse boxes to review current and future demand and trends to ensure the needs of our growing population and the community’s access to sports are met. Learn more about the project at [www.saanich.ca/osfs](http://www.saanich.ca/osfs)



What improvements would you like to see to Lambrick Park’s sport fields, courts and supporting facilities?





# Lambrick Park

## CAMPUS RENEWAL PROJECT

### Gordon Head Recreation Centre

The Gordon Head Recreation Centre was built in 1971, and has grown to be highly valued by the community over the years. The facility offers:

- » A 25m lap pool.
- » Leisure pools.
- » Hot tub, sauna, steam room.
- » Weight room.
- » Multi-purpose rooms.
- » An auditorium.

In 2019, a feasibility study was recommended for the replacement of Gordon Head Recreation Centre as part of the Lambrick Park Campus Renewal Project. The Gordon Head Recreation Centre also has two spaces that are nearing the end of their useful life - the Bert Richman Building and the Wellness Annex.



#### FACILITY LIMITATIONS AND WAITLISTS

The Saanich Parks, Recreation and Community Services Market Analysis found these key limitations:

- » The Rec Centre has no ice surface, and this is in high demand.
- » Fitness classes like yoga, cycling, dance, etc. are reservation only, and there are often long waitlists.
- » Aquatic limitations include size of the pool.
- » The Rec Centre has no gymnasium. A large, dividable gym for activities like kid's camps and pickleball is in high demand.

#### What improvements would you like to see for the Gordon Head Recreation Centre?

Anything from minor renovations to a complete redevelopment could be possible depending on what our community needs.



# Lambrick Park

## CAMPUS RENEWAL PROJECT

### Natural Areas

Environmental protection and climate action are priorities for the District of Saanich and fundamental components of a healthy, resilient, and sustainable community. Maintaining adequate green space, biodiversity, and well-functioning natural areas are important to both ecosystem health and human health.

Natural areas in parks provide people with physical and mental health benefits, support social connection and learning, improve environmental quality, and even contribute to community well-being and economic value.

Within Lambrick Park, there are areas that provide habitat for species tolerant of urban conditions, such as birds, flying insects, amphibians, reptiles, and small mammals like bats. However, according to the 2025 arborist report, the small grove of Garry Oak trees on the north side, surrounded by a Garry Oak meadow, is considered to be the most notable habitat.

As such, Lambrick Park Campus could benefit from increased natural habitat.

#### TAKING ACTION ON CLIMATE CHANGE

Saanich has a long history of climate action. Most recently, Saanich Council declared a Climate Emergency in 2019 and adopted the *Climate Plan: 100% Renewable & Resilient Saanich* in 2020. This plan set targets to limit climate change and transition to 100% renewable energy.

Where do you see opportunities for naturalization in Lambrick Park?



EXISTING GARRY OAK TREES ALONG THE NORTH EDGE OF LAMBRICK PARK



# Lambrick Park

## CAMPUS RENEWAL PROJECT

### Informal Uses

When left unprogrammed, sports fields support important community recreation uses. Informal recreation can be as important as organized club sports for wellbeing.

The diversity of open space at Lambrick Park provides opportunities for community uses like pick-up games, birthday parties, picnics, multicultural events, etc.

#### TRAILS

- Lambrick Park has a network of trails including:
- » A 1.5 km perimeter loop trail,
  - » Lambrick Park Greenway, a multi-use pathway running north-south through the Park.
  - » Accessible paved access between Feltham Road and the Rec Centre.

#### PLAYGROUND

There is one small playground at Lambrick Park, consisting of a metal slide, a ‘climbing car’ and four swings.

#### DOG PARKS

There are two seasonal pop-up dog parks at Lambrick Park for big and small dogs respectively. The pop-up dog parks are temporarily fully fenced enclosures that allow off-leash dogs, open from April to October.

#### SKATEPARK

The Gordon Head Skatepark is the only skatepark in Saanich, and one of only four skateparks in the Capital Regional District. Built in the early 2000s, the skatepark was the result of hard work and dedication by Saanich’s youth.



How do you use the unprogrammed areas of Lambrick Park Campus? What are the opportunities to better support informal recreation at the park outside of the Recreation Centre?



# Lambrick Park

CAMPUS RENEWAL PROJECT

## What is your one big idea?

Share your **BIG, BOLD IDEAS**  
for the renewal of the Lambrick  
Park Campus below:

**Thank you for sharing your feedback!**  
For more information and to stay in  
touch with the project, scan the QR  
code, or visit: [saanich.ca/hellolambrick](https://saanich.ca/hellolambrick)



**Contact us**  
**E:** [lambrick@saanich.ca](mailto:lambrick@saanich.ca)  
**P:** 250-475-5522

