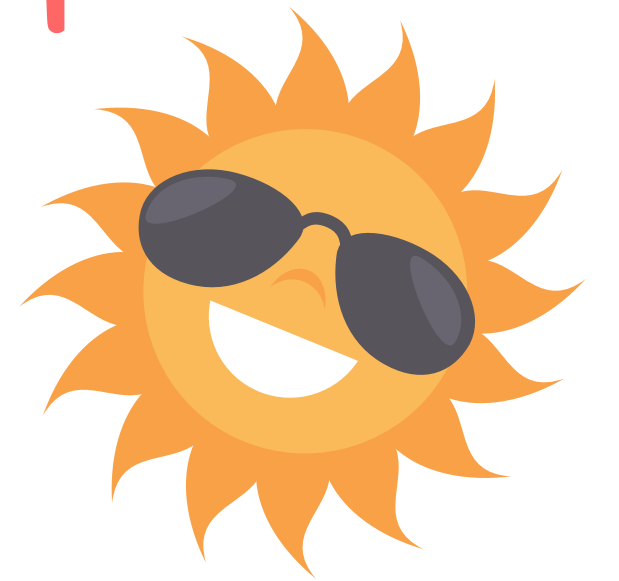


# WYLD SUMMER LEADERSHIP PLACEMENT PROGRAM

## F.A.Q'S



Q: Will my placement be outside or in a recreation centre?



A: All placements are at outdoor camps located at neighbourhood playground parks. Our parks include: Meadow Park, Marigold Park, Copley Park, Glanford Park, Reynolds Park, Braefoot Park, & Maynard Park

Q: How long are the summer placements?



A: We want to work with you to see what fits your schedule. Placements can range from one to four weeks. They do not need to be consecutive weeks. Our camps run from 8:45am - 4:00pm each day.

Q: Do I need any special skills or training?



A: We are looking for leaders with a passion for working with children in an outdoor setting. We offer training workshops before you begin to help you brainstorm and learn to facilitate games and activities to help keep everyone entertained, and safe.

Q: Will I get a job after I complete my placement



A: We will do our very best to prepare you for any future opportunities that may arise to work with children in our recreation programs. We can't guarantee a job in the end, but we can guarantee a fun and fulfilling experience for your resume. You will also get a reference letter and a certificate of completion that can be used towards high school volunteer credits.

Q: Will I be the only youth at camp?



A: Our camps host kids 5-12 years of age, so you will likely be the youngest leadership role at the camp! But don't worry, our staff are experts at working with young people, and you will make friends in no time!

Q: How will I get to and from my placement?



A: We will work with you to ensure that you are placed at a camp that is convenient for you to get to and from each day. It will be up to you to arrive on time, by foot, by bike, by bus, by car, by skateboard - its up to you! We are not opposed to arriving by unicycle if that is your preference.



MORE QUESTIONS?  
LORYN.ANDERSON@SAANIC  
OR MADDIE.PARKS@SAANI