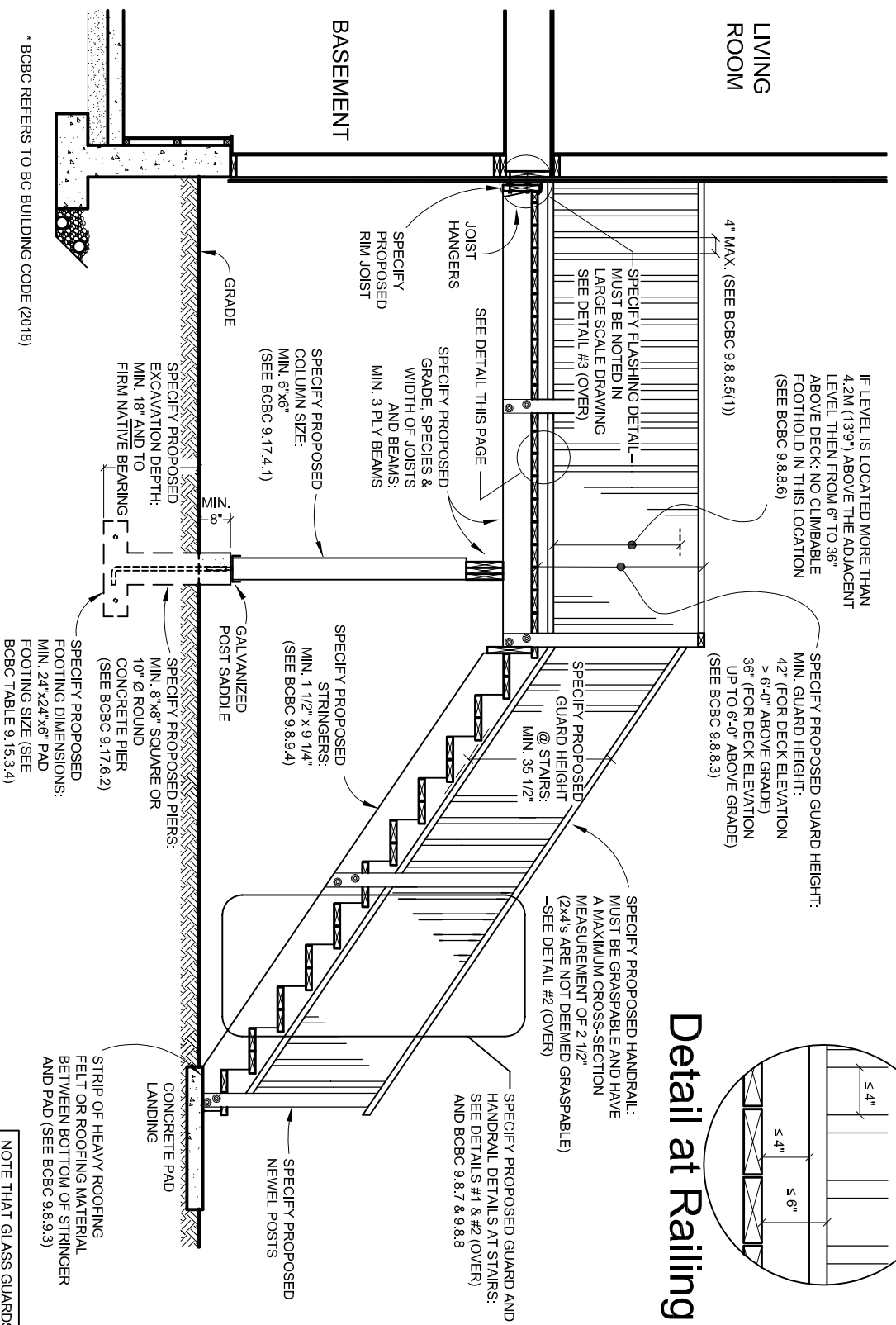


# Sample Residential Deck Design and Plan Requirements

(Serving an Existing Single Dwelling Unit)

B.C.B.C. 2018

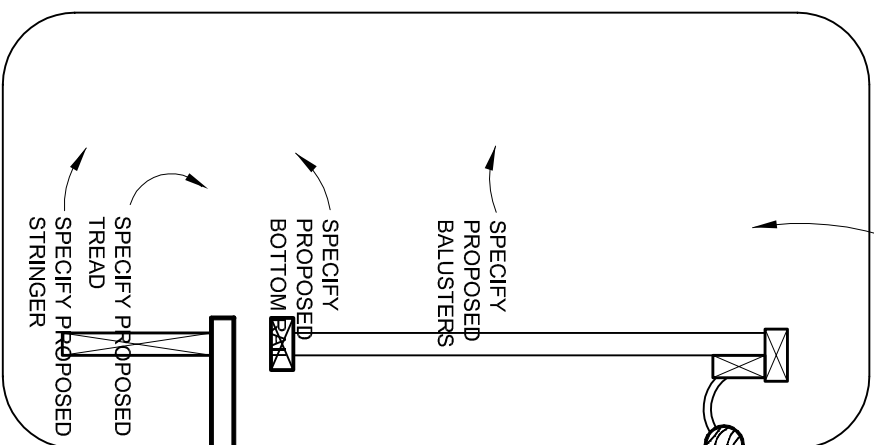
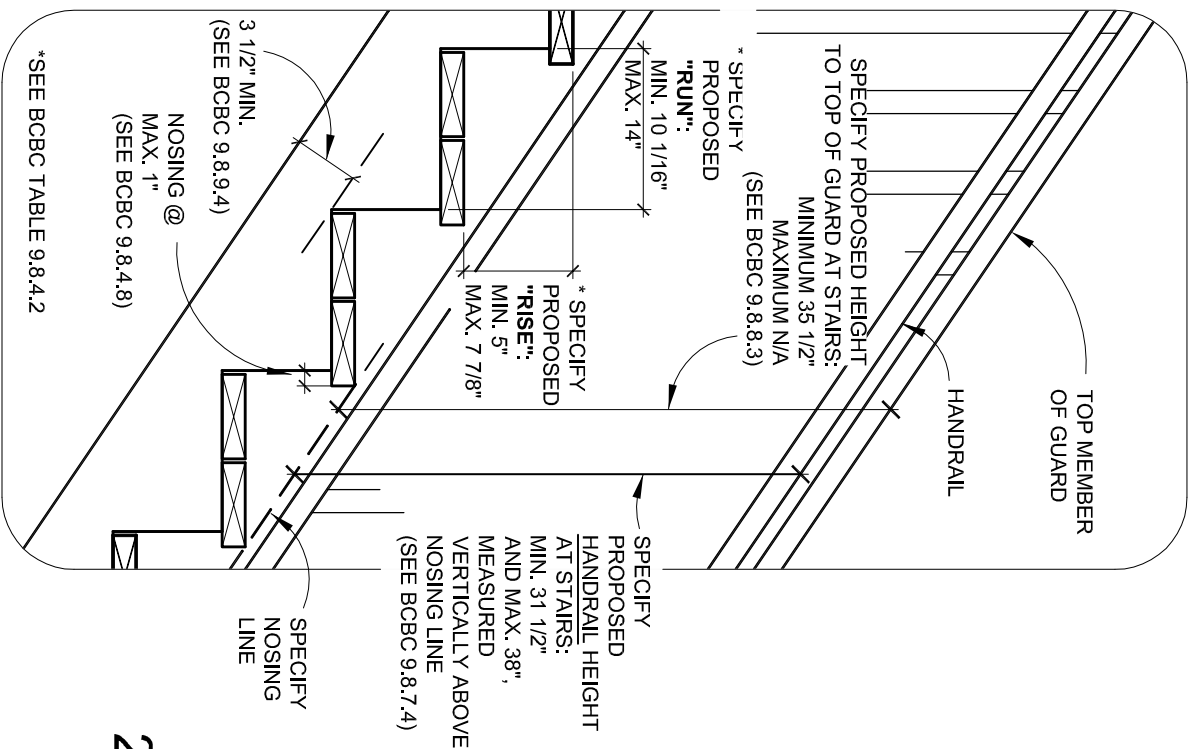
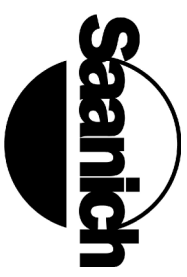


\* BCBC REFERS TO BC BUILDING CODE (2018)

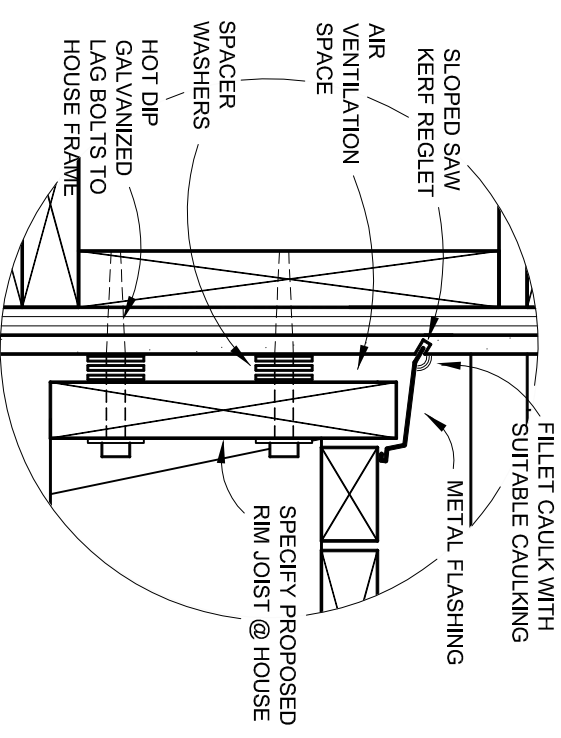
NOTE THAT GLASS GUARDS WITHOUT A TOP RAIL ARE TO BE DESIGNED BY A P. ENG AND BE ACCOMPANIED BY A SCHEDULE B

# Sample Residential Deck Design and Plan Requirements

B.C.B.C. 2018



SPECIFY PROPOSED GRASPABLE HANDRAIL: MAX. 2 1/2" CROSS SECTION



**3. Sample Flashing Detail at Intersection of Deck and Existing House**

**2. Sample Guard & Handrail Section at Stairs**

**1. Sample Stair & Stringer Detail**

(\*BC BUILDING CODE 2018)