

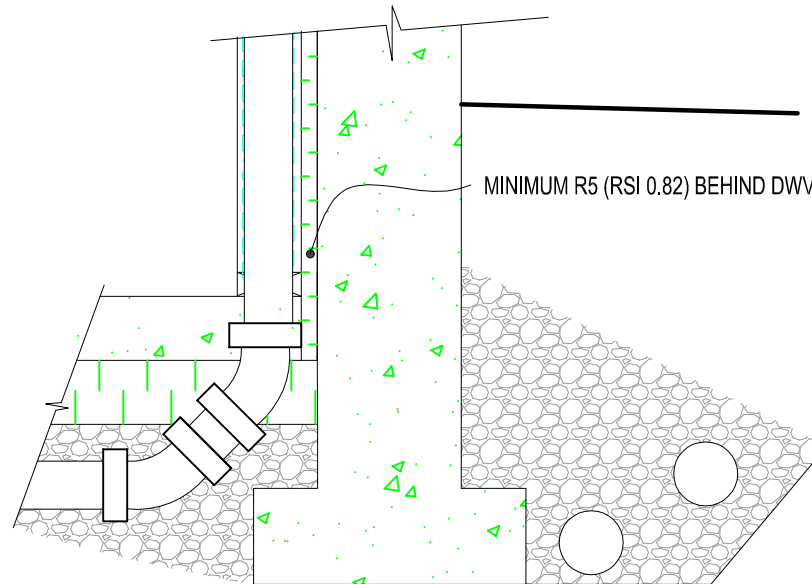
BCBC 9.36 INSULATION DETAIL

*BCBC REFERS TO BC BUILDING CODE (2018)

NOT LESS THAN 55% OF EFFECTIVE
THERMAL RESISTANCE BEHIND
PENETRATING ELEMENTS

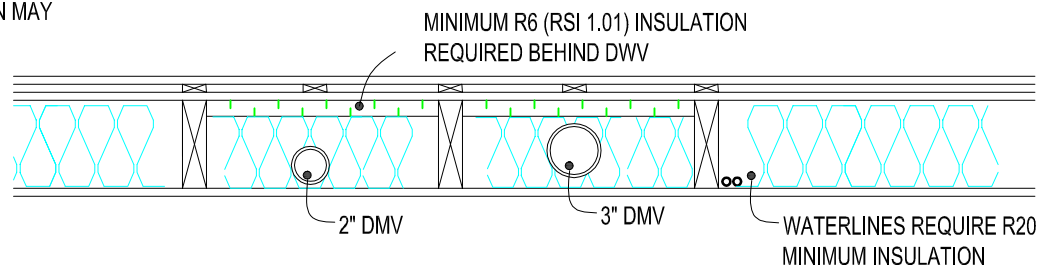
NOTE : THESE DETAILS ARE A GUIDE BASED ON
COMMON CONSTRUCTION PRACTICE AND ARE
NOT MEANT TO BE A PRESCRIPTIVE
REQUIREMENT. FOR FURTHER DETAILS
CONTACT YOUR ENERGY ADVISOR.

NOTE: DUCTS OR PIPES CARRYING HOT WATER OR
CONDITIONED AIR - INCLUDING INTERIOR RETURN AIR
DUCTS REQUIRE 100% VALUE OF INSULATION.



CROSS SECTION OF DWV AT FOUNDATION

NOTE: DUCTS OR PIPES CARRYING HOT
WATER OR CONDITIONED AIR THROUGH
WALLS WHICH REQUIRE INSULATION MAY
REQUIRE A LARGER CAVITY TO
ACCOMMODATE INSULATION



CROSS SECTION OF DWV AT FOUNDATION

