



District of Saanich Albina Tillicum Gorge Road Upgrades

Phase 1, 2 & 3

Public Information Session
October 21, 2024





Welcome to the Albina, Tillicum, Gorge Road Upgrades Public Information Session

The objectives for today's Public Information Session are:



Present the project and objectives



Present the design concept and construction phasing



Provide a clear and transparent overview of District of Saanich's long-term plans for this project

Why are we doing this?

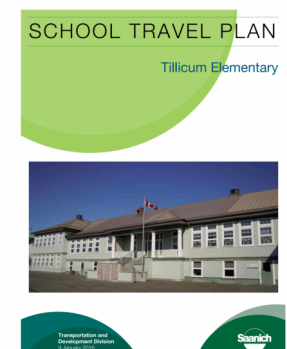
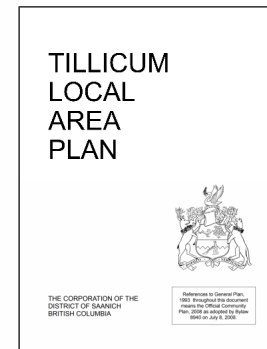
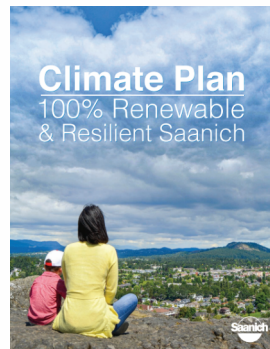
Underground Infrastructure

- Underground utility upgrades to replace aging infrastructure have risen in priority in the Capital Plans for this area
- The timber framed tunnel which houses the sewer along Albina Road is beyond its service life, impacting its structural integrity. Decommissioning and re-routing of the sewer mains is required to sustain service.
- The new sewer when installed will redirect flows to the new lift station.
- Medium-term geotechnical remediation was completed in 2019, and long-term remediation is needed
- The Albina lift station requires upsizing to accommodate the projected growth in the area.



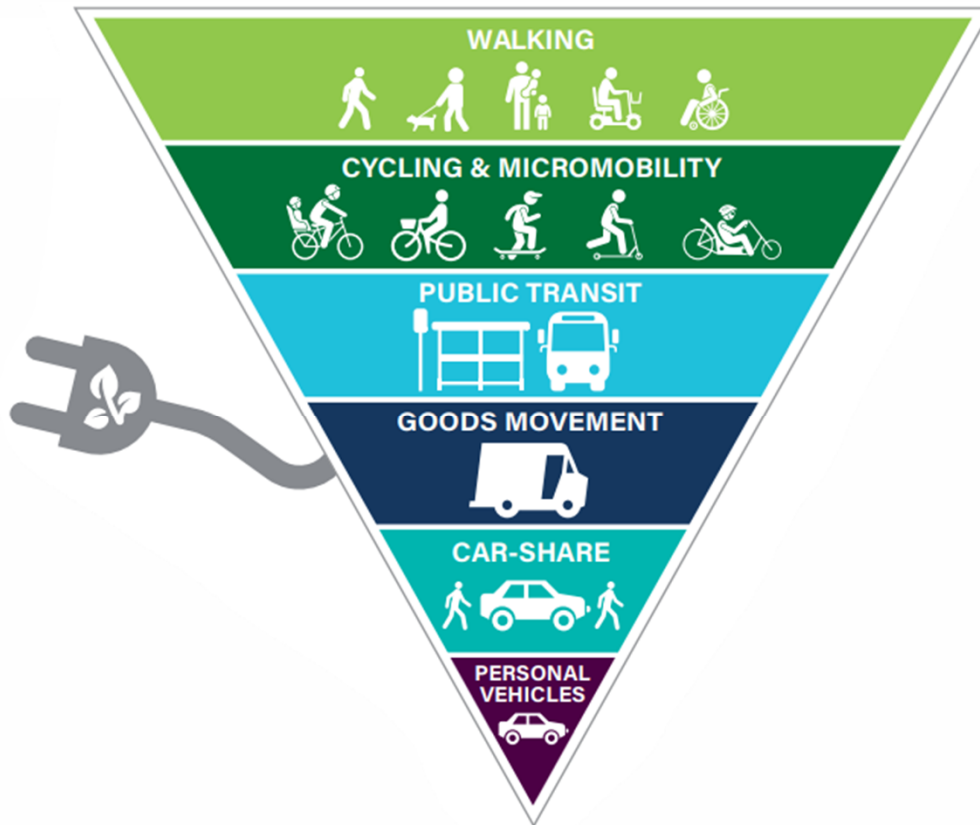
Why are we doing this?

Transportation Infrastructure



- Improvements align with Saanich's Official Community Plan, Tillicum Local Area Plan and other planning documents.
- Bicycle network improvements are prioritized in the Active Transportation Plan (2023).
- Ongoing resident concerns with lack of active transportation facilities.
- Complete cycling gap providing connections to City of Victoria, and Esquimalt.

OCP Transportation Policy



Key transportation policies in the OCP:

- Prioritizing modes based on the Mobility Priority Pyramid
- Reducing total vehicle kilometers travelled and personal vehicle ownership
- Achieving Vision Zero

What's not included in the OCP?

Mention of road expansion or improvements to facilitate better conditions for personal vehicle use and storage

What we've heard is needed:

- Safe accessible streets with cycling infrastructure to access the surrounding areas.
- Improved safety for all road users at the Gorge/Tillicum and Gorge/Harriet Intersections.
- Improved crossing opportunities along Gorge Between Tillicum and Harriet.
- Improved connections to neighboring communities.



Design Considerations



Environmental

- Tree retention
- Environmental Protection Plans
- Existing catchment area
- Climate change considerations
- Work near Gorge Inlet
- Archaeological Assessment



Community

- Local Access
- Public Use
- Accessibility
- Transit Service
- Emergency Response
- Public Concerns
- Service Continuity



Technical

- District of Saanich Schedule H standards and specifications
- Road Safety
- Future capacity
- Existing constraints - alignments, grades, available road width, natural assets
- Utility conflicts (Hydro, Telus, gas, existing infrastructure)



Economic

- Capital Costs
- Lifecycle Costs
 - Operations and Maintenance
 - End of Life Replacement

Phase 1 – Albina Lift Station Replacement

Scope:

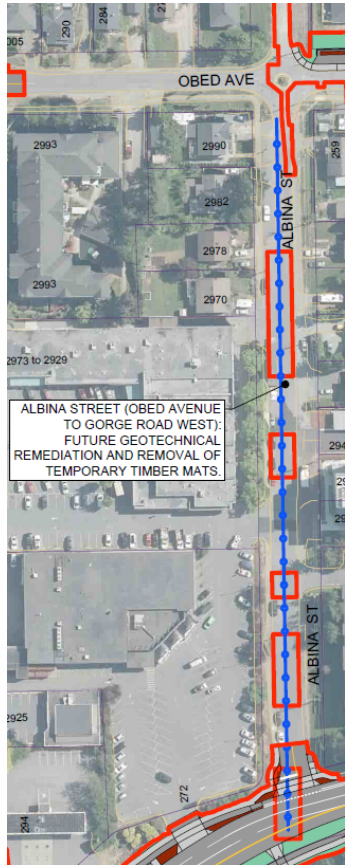
- Lift Station replacement
- 167m gravity sewer on Albina Street
- 307m sewer force main along Obed Avenue and Millgrove Street
- 144m gravity sewer on Millgrove Street
- 13 Service replacements on Millgrove Street
- Sanitary and storm replacements on Gorge Road West



Estimated \$6,000,000

Estimated Timeline: 12-18 months

Phase 2 –Geotechnical Remediation



Scope:

- Address the geotechnical concerns under Albina Street from Gorge Road West to Obed Avenue due to the existing deep trunk sewer contained in a timber framed tunnel from 1950s
- Test grouting prior to finalizing design
- Injection grouting as required to provide long-term geotechnical remediation to reinforce the soil structure
- Maintain the reliability of the infrastructure and roadway

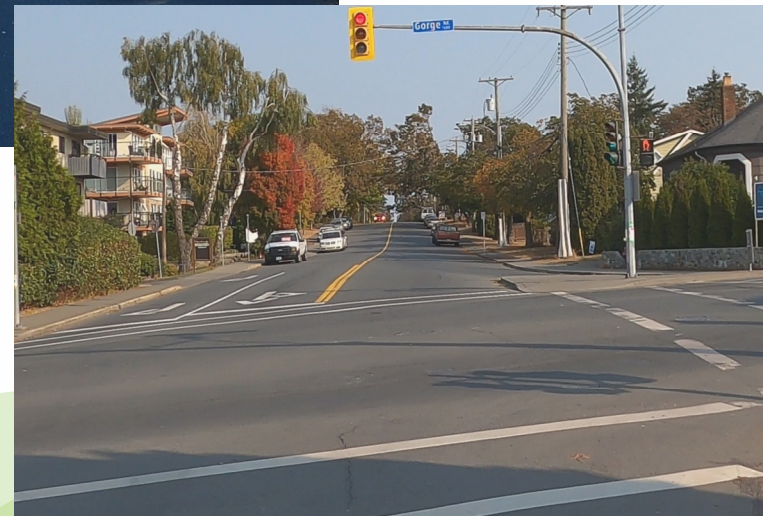
Estimated \$TBD

*Phase 2 work cannot be completed until Phase 1 sewer works are completed.

Phase 3 – Gorge Road, Tillicum Gorge to Arena Active Transportation Upgrades

Scope:

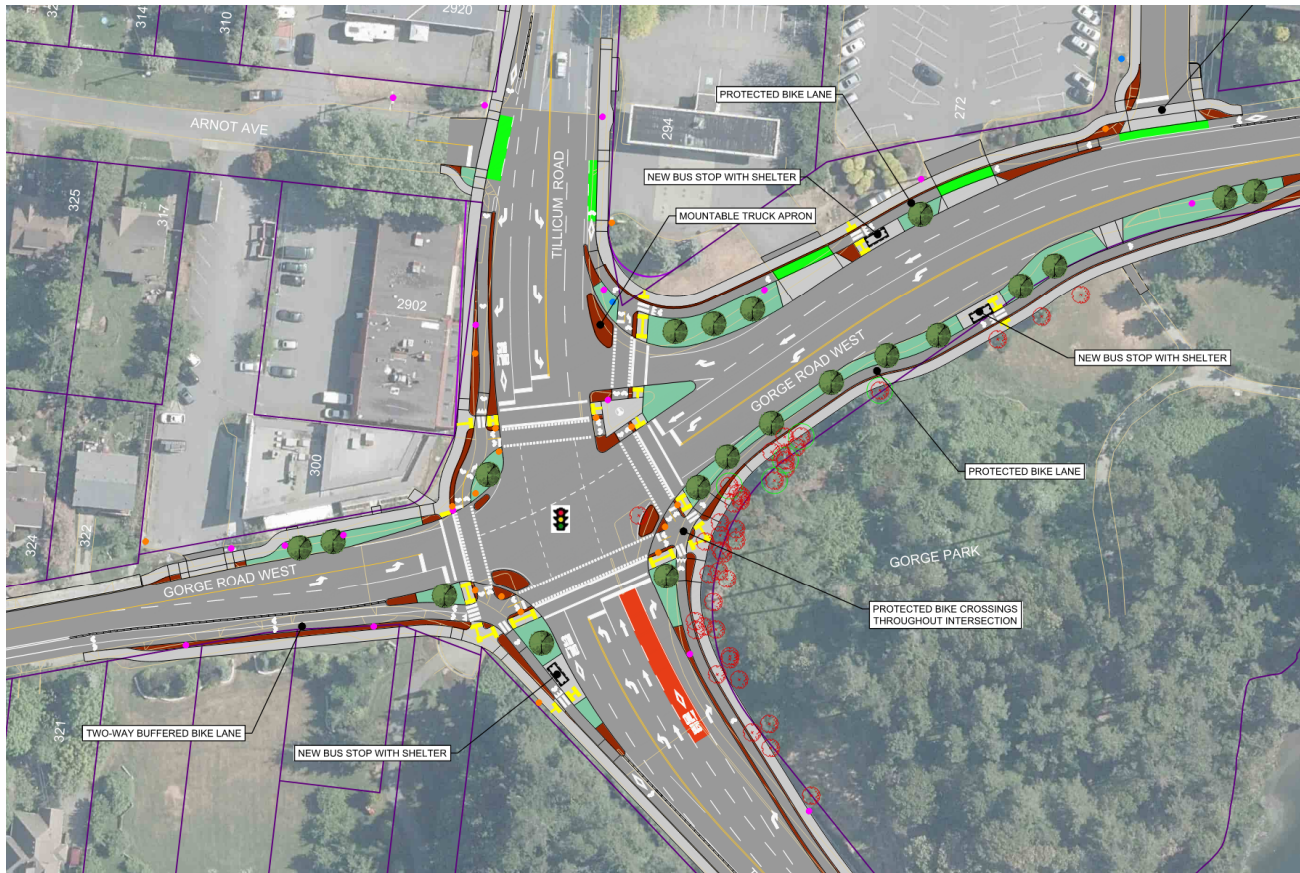
- Transportation upgrades on Tillicum Road between Tillicum Bridge and Arena Road, and Gorge Road between Tillicum and Harriet Road:
 - Fully Protected Intersection at Gorge and Tillicum
 - Bus Stop upgrades
 - Protected Bike Lanes
 - Improved crossing opportunities along Gorge Road
 - Full pavement overlay



Estimated \$13,000,000

Construction duration: 18 months

Protected Intersection at Gorge and Tillicum



Safety

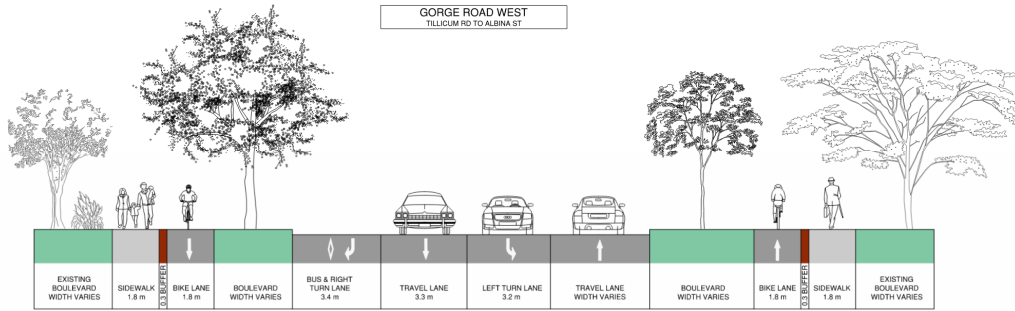
- Reduces conflict between cyclists and drivers
- Greatly reduces the crossing distance at crosswalks

Efficiency

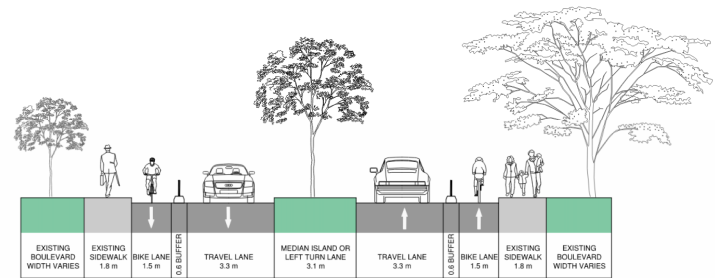
- Improves capacity
- Reduces delays

Proposed Cycling Facilities

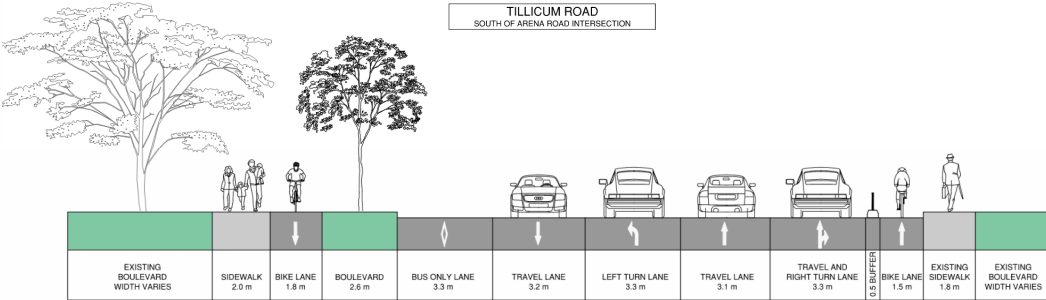
GORGE ROAD WEST
TILlicum RD TO ALBINA ST



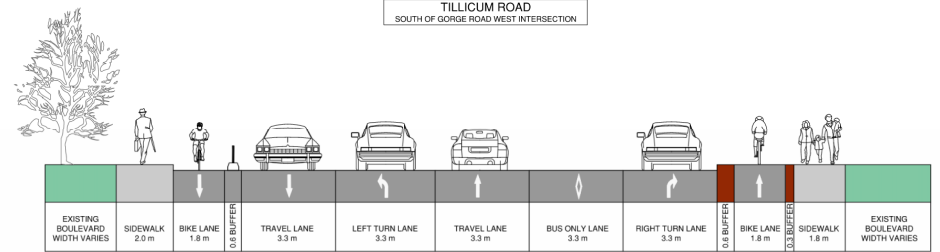
GORGE ROAD WEST
ALBINA ST TO HARRIET ROAD



TILlicum ROAD
SOUTH OF ARENA ROAD INTERSECTION



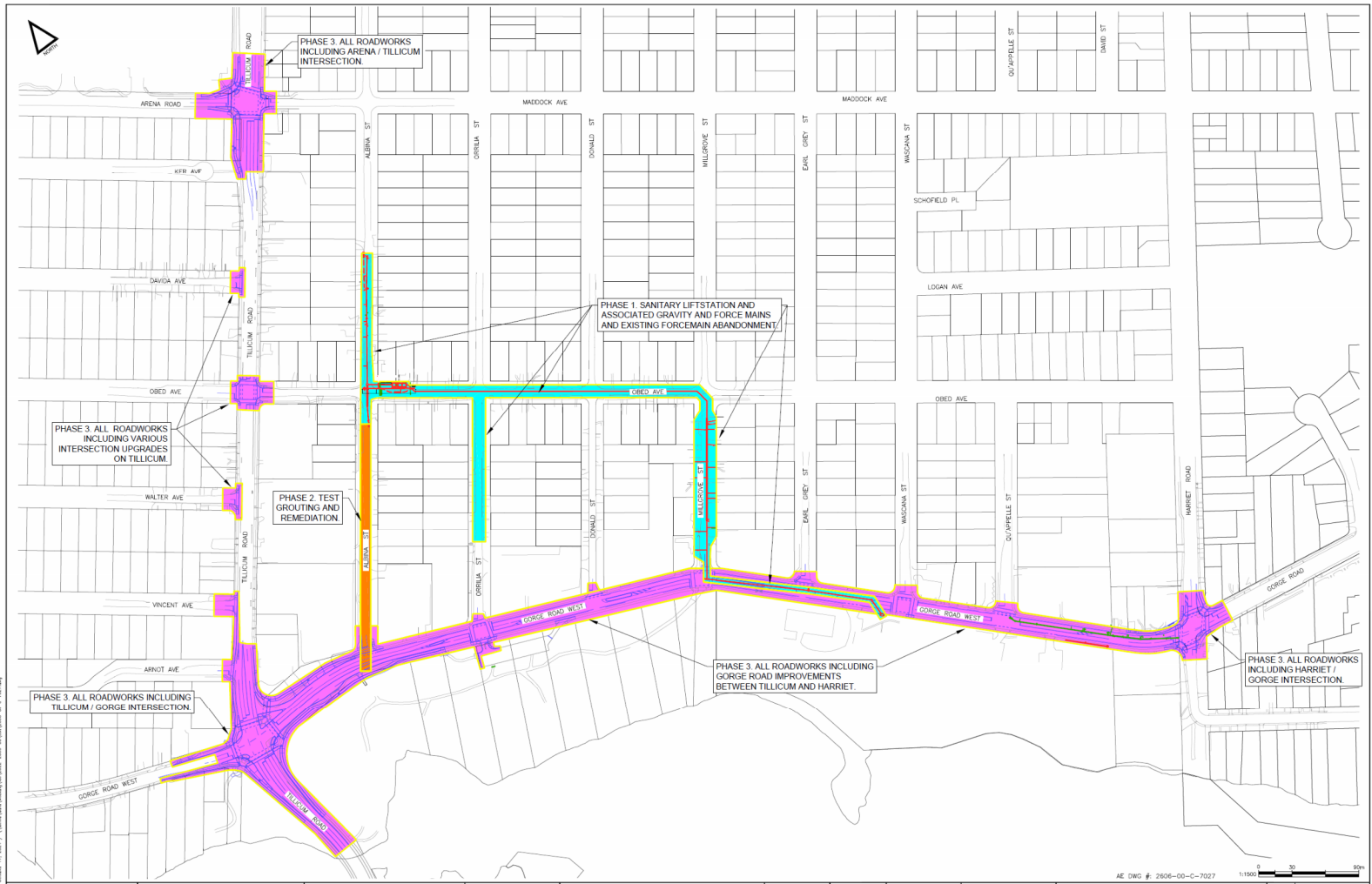
TILlicum ROAD
SOUTH OF GORGE ROAD WEST INTERSECTION



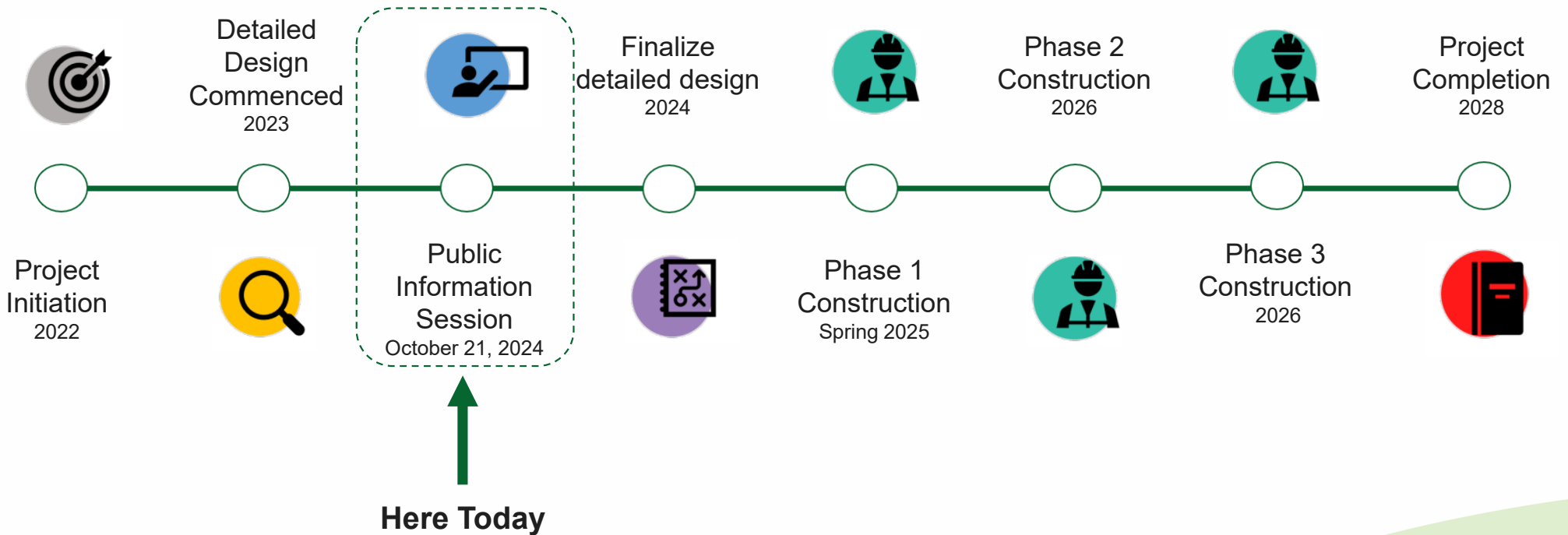
Construction Phasing Areas

Legend

- = Phase 1
- = Phase 2
- = Phase 3



Project Timeline



Next Steps



Review any comments received from Public Information Session



Summary of Information Session will be made available online at the project website



Provide Public updates throughout construction planning via project webpage and notices

