







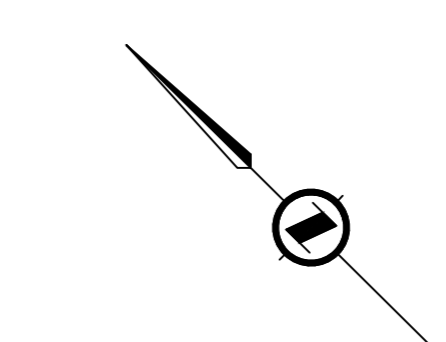
**ALBINA-TILlicUM-GORGE  
INFRASTRUCTURE IMPROVEMENTS  
KEY PLAN / PROJECT SUMMARY  
OCT 2024**

**LEGEND:**

-  ASPHALT
-  CONCRETE
-  BOULEVARD
-  CONTRASTING SURFACE TREATMENT
-  EXTENTS OF SURFACE WORK
-  GEOTECHNICAL REMEDIATION

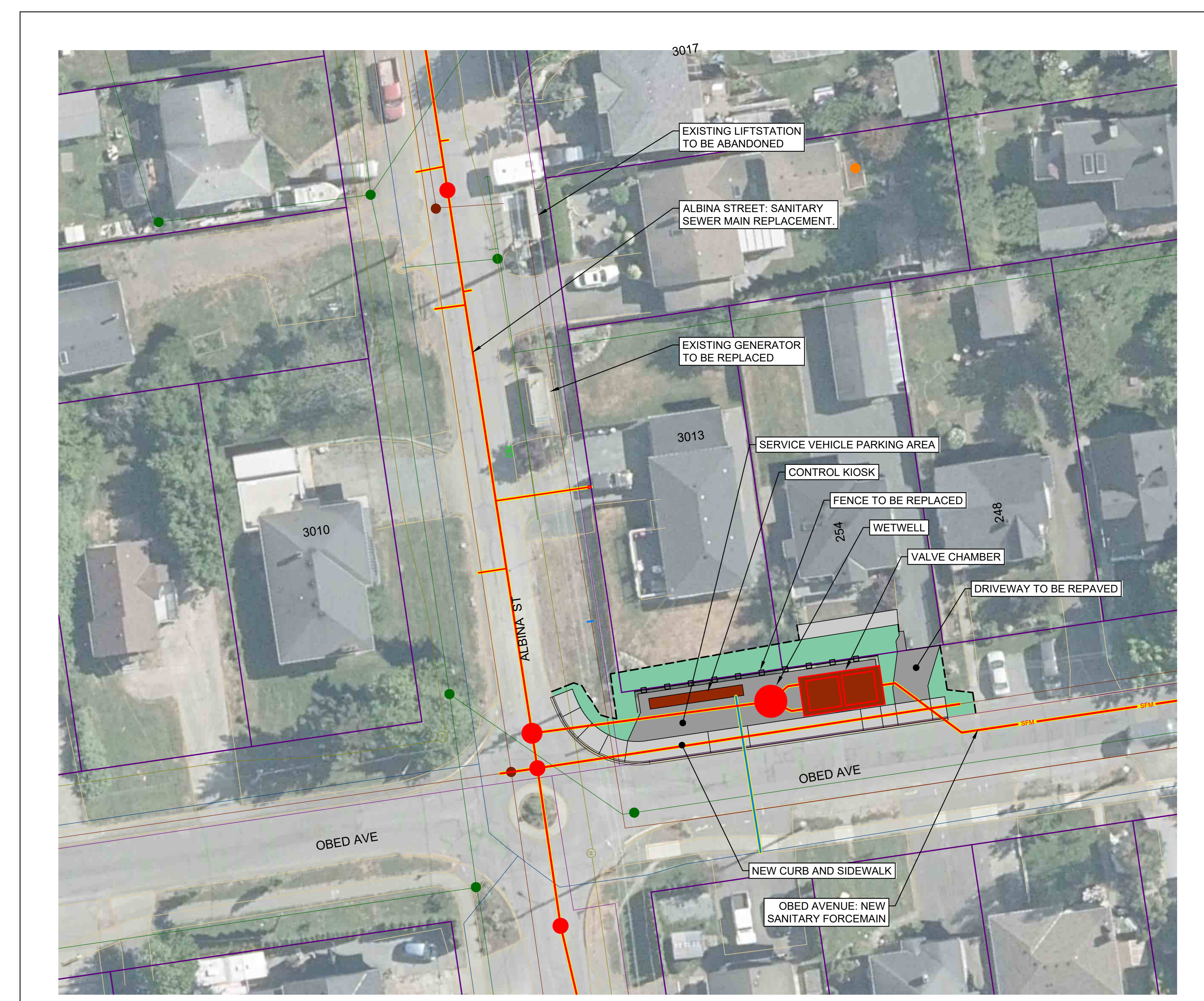
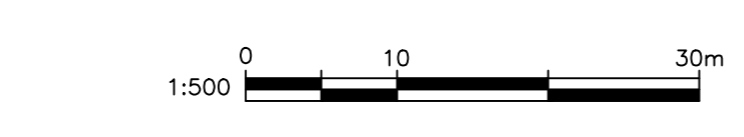
1:1000 



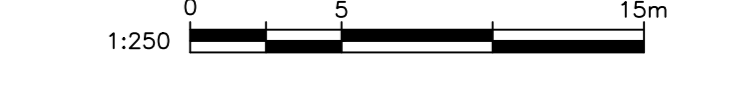


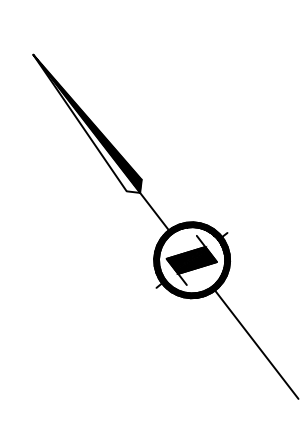
**ALBINA-TILLCUM-GORGE  
INFRASTRUCTURE IMPROVEMENTS  
PHASES 1 & 2 - UTILITY UPGRADES  
OCT 2024**

- LEGEND:**
- ASPHALT
  - CONCRETE
  - BOULEVARD
  - CONTRASTING SURFACE TREATMENT
  - PROPOSED SEWER MANHOLE
  - PROPOSED SEWER PIPE
  - PROPOSED STORM DRAIN MANHOLE
  - PROPOSED STORM DRAIN PIPE
  - GEOTECHNICAL REMEDIATION
  - EXISTING SEWER LINE
  - EXISTING DRAIN LINE
  - EXISTING GAS LINE
  - EXISTING POWER OR TEL LINE

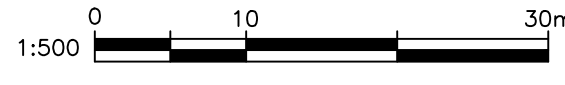


**LIFTSTATION INSET PLAN**



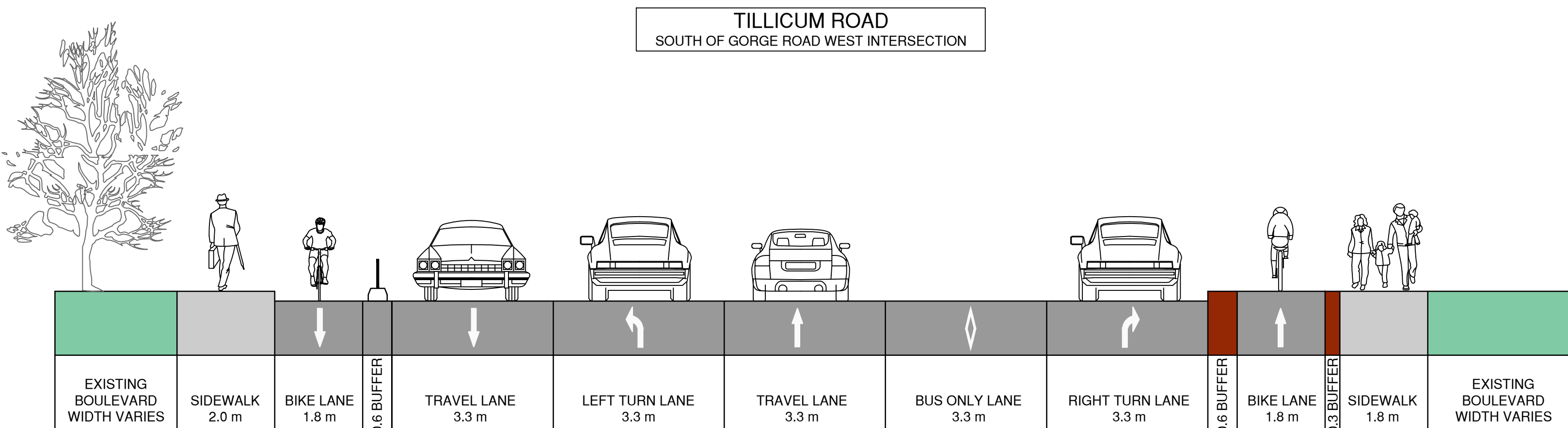
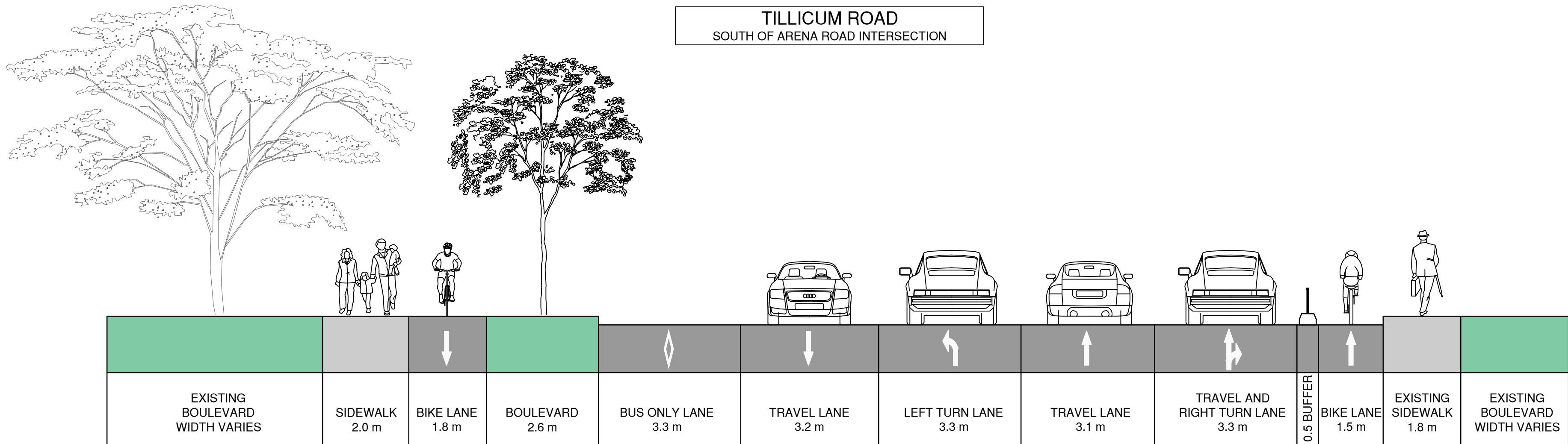


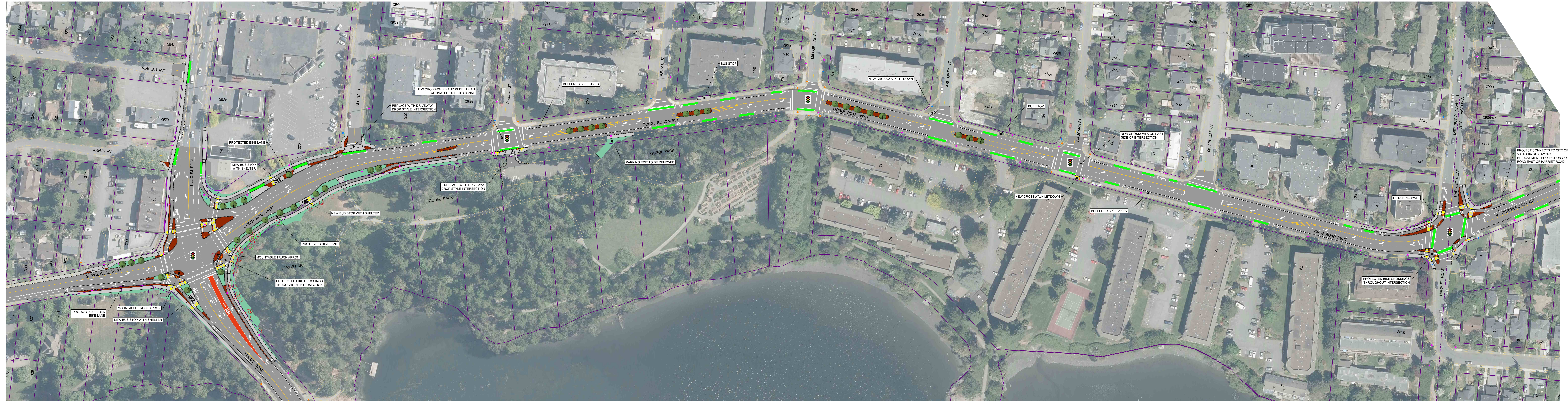
**ALBINA-TILLICUM-GORGE  
INFRASTRUCTURE IMPROVEMENTS  
PHASE 3 - TILLICUM ROAD  
OCT 2024**



**LEGEND:**

- ASPHALT
- CONCRETE
- BOULEVARD
- CONTRASTING SURFACE TREATMENT
- RETAINING WALL
- FIRE HYDRANT
- UTILITY POLE
- SIGNAL OR LIGHT POLE
- TRAFFIC SIGNAL
- NEW TREE PLANTING
- EXISTING TREE (<300mm Ø) TO BE REMOVED (APPROXIMATELY 42 TREES).
- EXISTING TREE (>300mm Ø) TO BE REMOVED (APPROXIMATELY 7 TREES).





**ALBINA-TILLICUM-GORGE  
INFRASTRUCTURE IMPROVEMENTS  
PHASE 3 - TILLICUM ROAD  
OCT 2024**

**LEGEND:**

- ASPHALT
- CONCRETE
- BOULEVARD
- CONTRASTING SURFACE TREATMENT
- RETAINING WALL
- FIRE HYDRANT
- UTILITY POLE
- SIGNAL OR LIGHT POLE
- TRAFFIC SIGNAL
- NEW TREE PLANTING
- EXISTING TREE (<300mm Ø) TO BE REMOVED
- EXISTING TREE (>300mm Ø) TO BE REMOVED

