

2026 Budget In Brief

**Saanich Council has finalized
the 2026 Budget.**

Take a look at the plans the District of Saanich has for the coming year and how taxes and fees you pay will maintain and improve the services you enjoy every day.



Saanich's strategic priorities

OUR PROCESS

The **Saanich Vision** points which way to go, but not how to get there.

The **Official Community Plan (OCP)** provides the framework.

The **Strategic Plan** gives the road map, focusing energy on what is most important.

The **Budget** provides the funding for planned activities and ongoing operations.

The **Annual Report** provides a synopsis of the previous year's strategic, financial and operational progress.

89% of residents rate the quality of life in Saanich as good or very good.

Saanich's strategic priorities are aligned with the Official Community Plan

The Strategic Plan is Saanich's road map that guides the activities during Council's four-year term in office and beyond. The Strategic Plan goals, initiatives and actions will move Saanich toward its future vision as outlined in the Official Community Plan (OCP).

The OCP provides direction, focus and guidance on how to manage future growth and change in our community. Our OCP places emphasis on three themes:

- **environmental integrity**
- **social well-being**
- **economic vibrancy**

Through the Strategic Plan, Council defines the municipality's priorities, processes, and short and long term plans. Council ensures that the five-year financial plan and annual budget processes allocate funds and resources used to achieve our goals.

What are the most important issues currently facing the District of Saanich?

Here's what we heard from you in our 2024 Resident Pulse Check Survey.

The survey was completed by 1,980 respondents and most rated Saanich as a good place to live. The service areas with the highest mean scores are garbage and organics collection (79), parks and trails (75), recreation and outdoor facilities (74), and water, sewer and drainage systems (73).

Residents were also asked to rate the importance of the theme areas in Saanich's Strategic Plan. Mean scores were:

- Community wellbeing (78)
- Transportation (76)
- Housing (69)
- Economic Development (65)
- Climate action and environmental leadership (61)
- Organizational excellence (61)

Respondents were asked about the one issue they felt should receive the most attention from Saanich Council and 1,529 (85%) respondents left a comment. Out of those who left comments, over 4 in 10 (44%) identified infrastructure, traffic and roads as an issue requiring Saanich Council's attention.

Share your input on Saanich's financial future via our regularly scheduled surveys. The next one is planned for the last quarter of 2026.

Consolidated 2026 Budget Highlights by Strategic Plan Goal Areas

New funding for key initiatives has been allocated to each Strategic Plan Goal as follows:



Climate Action and Environmental Leadership

- \$5,659,000 for park, playground, and other park infrastructure replacement.
 - Fowler Park pickleball hub and tennis court.
 - Lambrick Park Campus renewal planning.
 - Rosedale Park Ball Diamond renovation.
 - Cedar Hill Park Derby Connector and Parking lot.
 - Investment in various natural areas and urban forestry.
- \$535,000 for bikeway improvements.
- \$150,000 for parkland acquisition.



Housing

- \$2,924,000 for asbestos cement and cast-iron water main replacement.
- \$1,560,000 for asbestos cement sewer main replacement.



Economic Development

- \$340,900 annual operating budget for Economic Development.



Community Well-being

- \$1,781,200 for replacement of fire engine and equipment.
- \$1,658,700 for bus stops, signals, poles and streetlights.



Transportation

- \$3,380,340 for roads.
- \$292,300 for bridges.
- \$11,299,100 for complete streets.

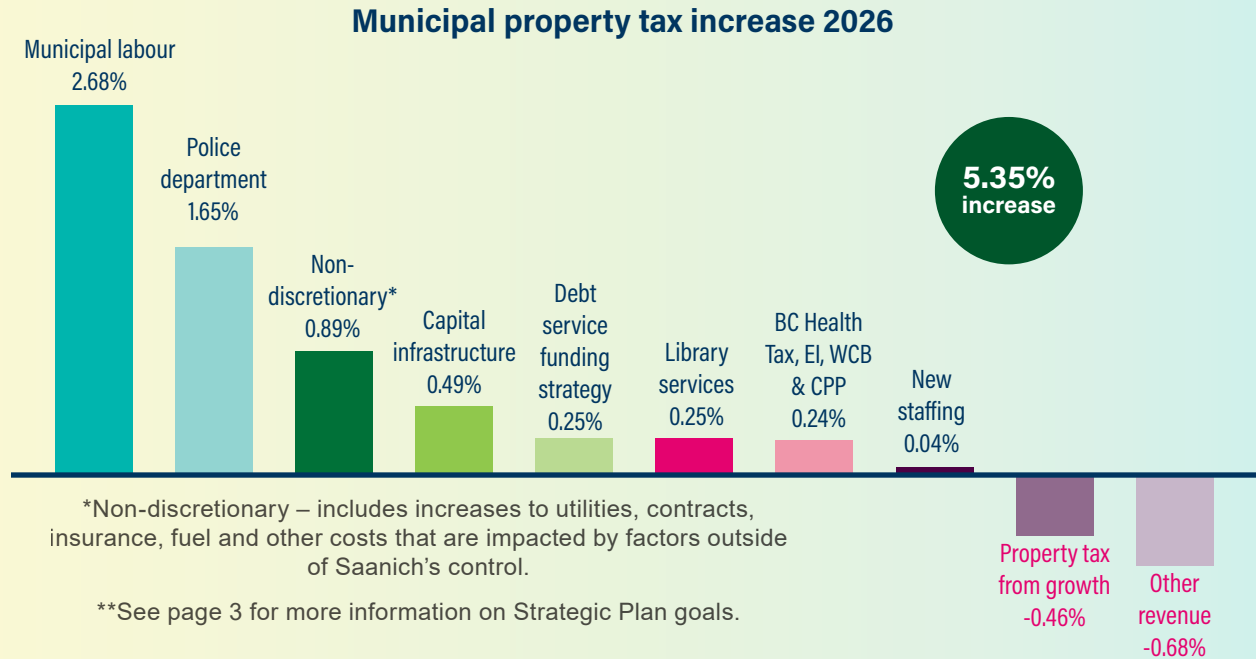


Organizational Excellence

- \$3,021,300 for new Business Systems initiatives.

Why did Saanich property tax increase by 5.35%?

The Saanich budget saw an overall net increase in property tax of 5.35%. This increase came from a variety of investments in everyday services you and your neighbours enjoy, for the repair and replacement of the assets that support delivery of those services and funding to move forward with Strategic Plan goals.

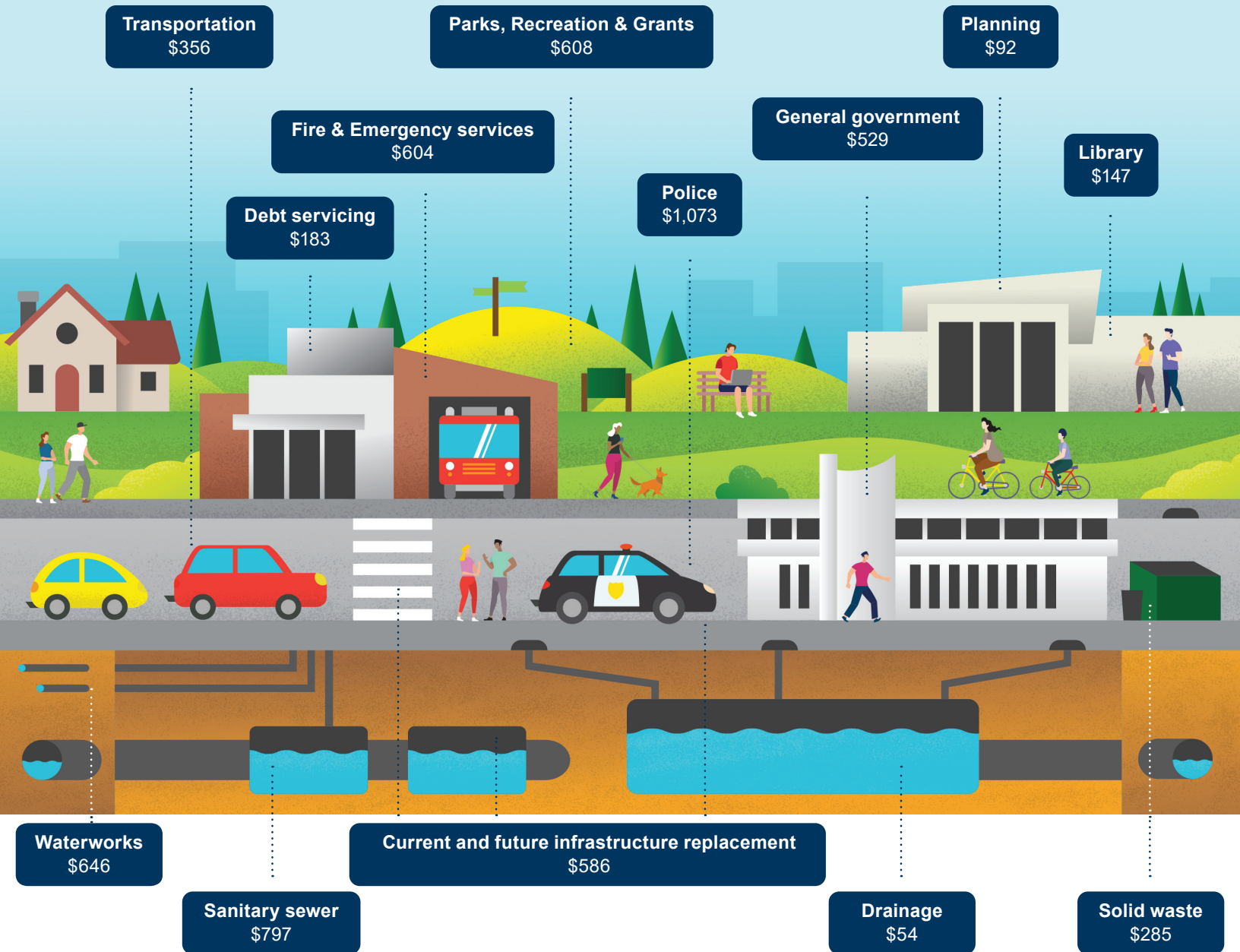


External senior government-related impacts

- **Canada Mortgage Housing Corporation Grant** – Canada Mortgage Housing Corporation (CMHC) provided the District with grant funding of \$3.7m annually over 4 years to support the delivery of affordable housing in the community.
- **The Growing Communities Fund** – The Growing Communities Fund provided the District with \$14m to support the Nellie McClung Library Project, Fire Hall #2 Project and the Lambrick Park Design Project.

What services does the budget support?

The taxes and fees you pay fund a wide variety of municipal services.



Total taxes and fees of \$5,960:

- Taxes are based on 2026 budgeted municipal taxes for an average homeowner with a property assessment of \$1,293,249.
- Solid waste fees are based on cart sizes of 120 litres each for garbage and organics per household.
- Waterworks fees are based on the 2025 average homeowner's consumption of 213 cubic metres plus an increase to the fixed rate charge.
- Sanitary sewer fees are based on the 2025 average homeowner's usage of 150 cubic metres plus an increase to the fixed rate charge.
- General government includes administration, finance, human resources, information technology, safety, communications, bylaw and inspections services.

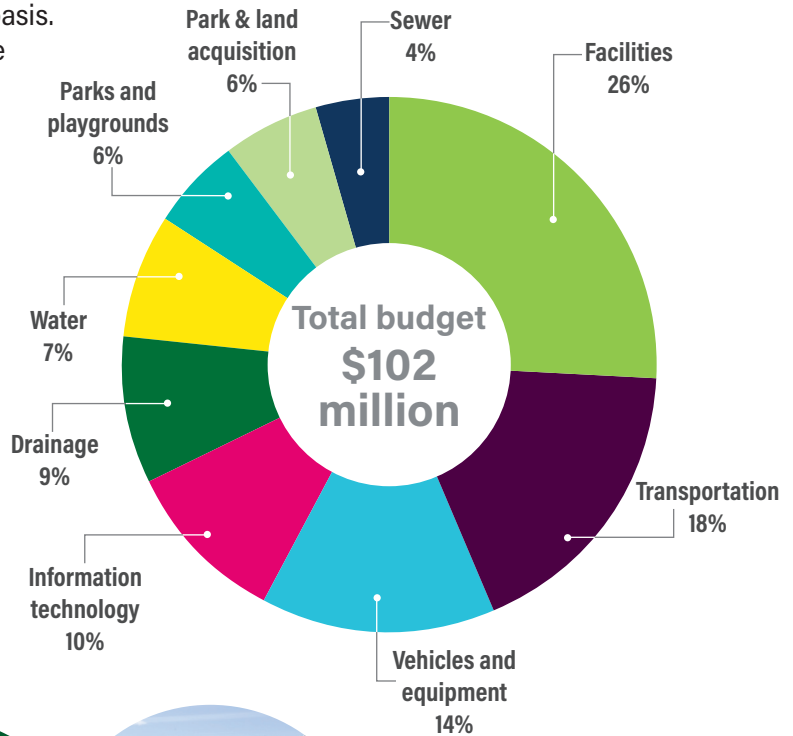
2026 Capital budget

How are the capital projects for the year determined?

Saanich is committed to taking care of the assets we all own, from sewer and water lines to roads, trails, parks, buildings, and vehicles. Proper stewardship means ensuring appropriate funding is available to keep them in good working order and replace them when their useful life is over.

To accomplish that, we establish how much we need to be funding this repair and replacement on an annual basis. The specific projects to be completed each year are determined by considering:

- **Strategic Facilities Master Plan**
- **Master plans** (The Active Transportation Plan, Shelbourne Valley Action Plan and Parks Management plans, to name a few)
- **Condition assessments**
- **Health and safety**
- **Maintenance history**
- **Risk assessments**
- **Efficiency and coordination** with other capital projects.



Key 2026 New Project Funding

- Firehall #2 Replacement - \$8.8M
- Nellie McClung Library Project - \$6.8M
- Saanich Operations Centre - \$4.4M
- Cordova Bay Rd - \$4M
- Lochside Renovations/Development - \$2.7M
- Advanced Metering Infrastructure Program/Meter Replacement - \$2.2M
- PKOLS Mount Doug Transmitter - \$2M
- Fire and Emergency Program vehicle and equipment replacement - \$1.8M
- Saanich Commonwealth Pool Upgrades - \$1.7M
- Shelbourne Valley Construction - \$1.5M
- Pavement Renewal Program - \$1.5M
- Fleet vehicle replacement - \$1.3M



Fleet vehicles



Shelbourne Street Improvement Project



Sidewalk installation plan

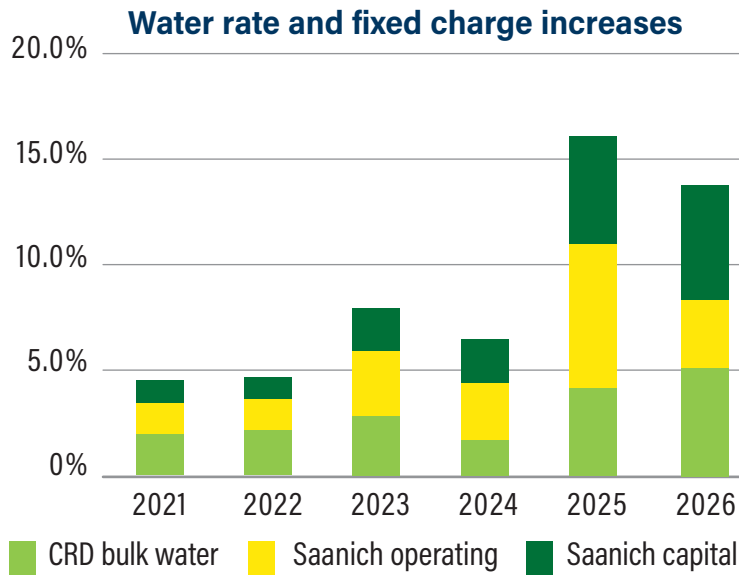
For detail on more capital projects go to the [Capital Projects Guide](#)

2026 Saanich utilities

Saanich builds, maintains and operates three underground systems, and provides garbage and organics pickup and disposal service.

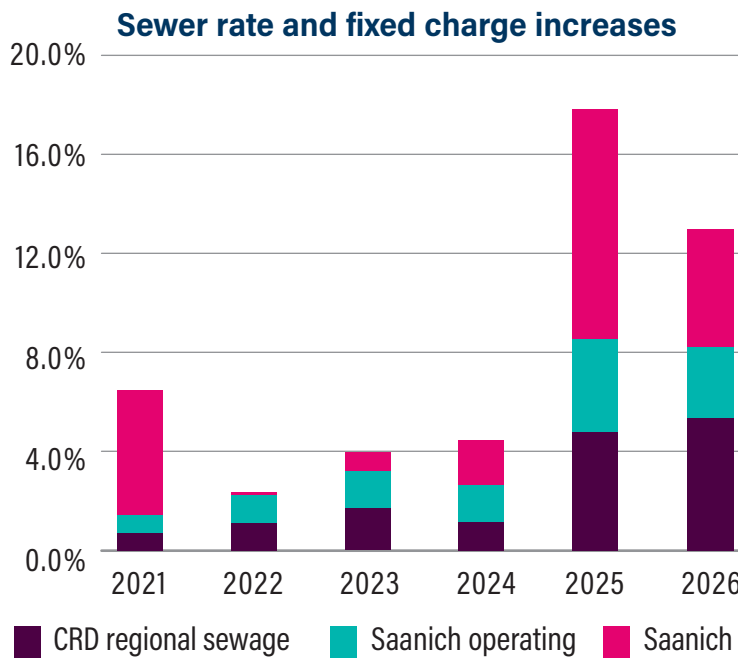
Water, sanitary sewer and solid waste services are utilities funded through user fees, and storm drainage is funded through your tax dollars. Saanich is responsible for the distribution of safe and reliable drinking water, collection of sanitary wastewater and stormwater management services.

Over time: a look at water and sewer rate increases



Water rate increases

Although regular water consumption usage has reduced, the delivery costs continue to increase. Approximately 64% of the fixed charge increase are Saanich's share of the annual cost of delivering the water services.



Sewer rate increases

Although sewer usage has reduced, the servicing costs continue to increase. Approximately 58% of the fixed charge increase are Saanich's share of the annual cost of delivering the sewer services.

Solid Waste rate increases

Similar to prior years, there are no increases to organic cart fees. Garbage cart fees have increased by 13.6% to account for the increased cost of both garbage and organics disposal. The base bin fee has increased by 6.92% to account for all the operating costs of the services.

Working together

Saanich works in collaboration with the Capital Regional District (CRD) to provide underground services. The CRD is responsible for treating, disinfecting and supplying drinking water from a large trunk watermain network that distributes water to all of the municipalities in the region. It is also responsible for the treatment of sewage and implementation of the regional sewage treatment infrastructure. The fees for the CRD portion of the system are collected when you pay your Saanich utility bill, and we pass the money on to them. This streamlines the revenue collection into one bill.

Significant 2026 capital projects

WATER

Investing \$11.4 million in major repair and replacement in the 2026 budget

- AMI Program / Meter Replacement
- Asbestos, cement and cast iron main replacement
- Pump Station/PRV replacement

SANITARY SEWER

Investing \$10.2 million in major repair and replacement in the 2026 budget

- Asbestos cement sewer main replacement at 10 locations
- Sanitary sewer lift station replacement and rehabilitation

STORM DRAIN

Investing \$8.9 million in major repair and replacement in the 2026 budget

- Substandard replacement at 14 locations, including Vincent Ave, Blenkinsop Rd at Mt Douglas Cross Rd, and Canterbury Rd at Seven Oaks.

Your questions and feedback are always welcome. Contact the Finance Department at **250-475-5415** or **budget@saanich.ca**

More resources are available at **saanich.ca/shapingsaanich**

