

AGENDA
PARKS, TRAILS AND RECREATION ADVISORY COMMITTEE
Saanich Municipal Hall, Council Chambers
Wednesday, November 24, 2021, 4:00 pm – 6:00 pm

To hear this meeting by telephone call **1-833-214-3122** and use code **446 693 663#** during the time noted above.

***** Territorial Acknowledgement & Inclusivity Statement *****

- 1. ADOPTION OF MINUTES** (attachment)
 - June 23, 2021;
 - September 13, 2021; and
 - October 27, 2021
- 2. CHAIR'S REMARKS**
- 3. FEES AND CHARGES**
Senior Manager, Recreation
- 4. FOOD TRUCKS – REVIEW AND RECOMMENDATIONS**
Manager of Park Planning and Development
- 5. CECILIA CREEK RAVINE FALLS DAYLIGHTING**
Manager of Park Planning and Development
- 6. BIRD FRIENDLY CITY**
Senior Manager, Parks
- 7. ADJOURNMENT**

* Adjournment *

Next Meeting: January 26, 2022

In order to ensure a quorum, please contact Nancy Chaggar at 475-5494 ext. 3505 or
nancy.chaggar@saanich.ca if you are unable to attend.

MINUTES
PARKS, TRAILS AND RECREATION ADVISORY COMMITTEE
Held at Saanich Municipal Hall, Council Chambers
June 23, 2021 at 4:00 pm

Present: Councillor Judy Brownoff (Chair), Kathleen Burton, Leigh Campbell, Pamela Carroll, Pat Danforth, Lyndsay Edgar, Amy-Jade Louie, Dexter Owen

Staff: Eva Riccius, Senior Manager Parks; Tiana Solares, Senior Manager, Recreation; Mike Goldsworthy, Park Planner Designer; Tania Douglas, Senior Committee Clerk

Regrets: Ted Austin, Annie Djioisa, Kyle Danielewicz

Minutes

MOVED by P. Carroll and Seconded by D. Owen: “That the Minutes of the Parks, Trails and Recreation Advisory Committee meeting held May 26, 2021, be adopted as circulated.”

CARRIED

CHAIR’S REMARKS

The Chair reported that the motion from PTR to ask staff to report on a district-wide dog strategy has been approved by Council. Parks staff will create a report to go to Council in July with an outline of steps needed to be done for a district wide dog strategy.

RECREATION SERVICE EXPANSION

The Senior Manager of Recreation presented information regarding the plans to reopen recreation services. She noted that:

- The province announced a restart plan and we are at step 2 of restart plan (July 1 is step 3.) Saanich has had a more specific approach than usual.
- Steps 3 and 4 are dependent upon the directives given, however a framework is in place.
- High intensity indoor classes will be added again after July 1st. It is anticipated that the mask order will be lifted and masks will be recommended and not mandatory. People have reported that they do not like to do exercise with masks on.
- We have brought back low intensity indoor group classes and families can now watch sports outside.
- At the pool there is increased lane density and lockers are open again although distanced. An increasing number of people are swimming but pre-registering is still necessary.
- Adult sports are now permitted again.
- The Cedar Hill Golf course is re-opening the putting greens and with limited food services.
- When Step 3 has occurred there will be an increase in capacity in classes. More direction is expected from the Public Health Officer.
- At SCP there will be increases in lane density for all swimming (public and clubs).
- Public will remain as reserved drop-ins and items such as slide and spray areas will be layered on in July and August. Staff want to enhance and increase services as we go and will need to hire more staff (eg. lifeguards).

- The capacity at SCP is almost 700 and things will increase slowly and safely. The public needs to get used to the increase in participants again.
- Tournaments and events will return at the Cedar Hill Golf Club.
- It is expected that in September it will be more business as usual but we keep some things learned during COVID-19 (eg. reserved spaces for fitness classes) and maybe not do things at 100% capacity.

In reply to a question, the Senior Manager of Recreation Services stated that scheduling swims and programs around the allowable capacity is a big challenge. Along with increasing the capacity, the schedules will change in weight rooms and pools. When looking at something like family swims, it also has to do with entry and egress requirements.

NATURAL INTELLIGENCE

The Senior Manager of Parks presented information on Natural Intelligence and mentioned the assistance provided by Ron Proscow, Marketing Coordinator at Saanich Parks and Recreation on this presentation. This presentation was previously given at a National Parks meeting and looks at last summer's marketing campaign and what was learned. The following was noted:

- We live in an important Coastal Douglas fir zone. Is a small area and most of it is privately owned. As a government agency we have an obligation to know what is happening on our lands.
- The importance of nature is becoming more mainstream; the goal is to get every resident involved in enhancing the natural world by 2025.
- In 2019 with the soft launch, Saanich website had informal survey about what people do when outside and how long they are spending outside. We are way higher than most of the Canadian average. The most active are mainly women 35-60 years old. Staff will investigate building ongoing outreach to include other demographic groups.
- Last summer staff created an Awareness and Education Campaign. It has a lot of components (eg. TV ad, hike the island series on CTV, radio ads, social media ad popups, branded content stories).
- The results in social media engagement was almost 23,000 public engagement posts and 779 hours public spent reading natural intelligence website content on the web. This is a big increase from 2019.
- A conceptual model was shown on building natural intelligence. There are many existing programs and ideas and concepts were also shown. There are any components to this and staff want to grow everyone's knowledge and involvement.
- Information was provided about newly created Great horned owl nesting platforms which has successfully housed owls in Saanich.
- The theme for this summer is more focused on parks keeping us healthy and how can we keep parks healthy. It is about respect and the gift of nature.

Committee comments/questions and staff responses:

- Effort by some members has been made to get out into nature more last year.
- Will there be more YouTube and Instagram ads? Member recommends YouTube and Instagram Geofencing can help target people in certain areas.
 - Instagram will be put more in focus this year and we will invest in YouTube this year. As we build a video library we may make our own section or channel.

- In terms of return on investment/effort, what do we see people doing?
 - We want people to volunteer more and become more engaged to the next level. One thing we are doing is looking at baseline research and see what we can ask of our community now and then in 5 years we can hopefully see there has been an increase in stewardship.
- One committee member is doing their Thesis on natural intelligence. This summer they will talk to residents to find baselines to put together a thesis. Part of this will ask people where were you at with natural intelligence and what does it mean to you now, before and after the pandemic.
- We need to make sure everyone is included in this process and not just able-bodied, caucasian, middle-class people.
- Is there any reaching out to with VIHA with health perspective?
 - Staff recently received an email from the CEO of the BC Parks and Recreation Association who is working with the Ministry of Health. They are looking for specific parks examples to provide the Ministry of Health as to where municipalities provide healthy spaces.

The Senior Manager of Parks noted that this is not the kind of program to do quickly. It needs to be a slow build so sustainability can be built in. Staff want everyone to feel engaged and see where they fit into the process.

PARK ACQUISITIONS IN GROWING NEIGHBOURHOODS

The Senior Manager of Parks introduced the Park Planner and they both presented information on park acquisitions. Saanich has 170 parks over about 826 hectares and the total park land in the municipality is over 1,700 hectares including CRD. Staff noted:

- Saanich has an opportunistic approach to new park acquisitions. When a homeowner asks if we want to buy or receive land, we look at and see if it meets certain criteria. If it does, it goes to Council who decides whether or not to acquire the land. A recent example of this is a property at the corner of Dysart and Walter. This was a house lot that was donated and it makes a great neighbourhood park.
- The role of urban parks is strong and this has been seen in the last year across the world (the importance of parks in urban settings). Parks are no longer just nice to have, they are an essential service.
- Lots of research has been done on this report by Park People in Toronto; they did a national survey about the importance of parks and it and reinforces what we are saying today.
- Google analytics show park use and the general trend over the last year shows how much park use has increased.
- We have plans to increase density in two parts of Saanich (Shelbourne and Uptown Douglas) and we need to figure out where those people can walk a dog, play with children, etc.
- Shelbourne Valley has Cedar Hill, Mt. Tolmie, Lambrick and Browning Parks. There is not a lot of green space in the actual corridor. We will not be able to fulfill the goal of an extra 26 hectares of parkland, knowing that areas will be densified.
- Uptown Douglas, population increase estimation is about 4000 people, we are missing about 20 hectares of greenspace (about the size of Cuthbert Holmes). Staff have the challenge of how can we meet the needs of those people and provide high quality greenspaces.
- We need to plan greenspace early on in the process and have intentional connections from trails to greenspace.

- Sometimes hard spaces can be turned into small high quality greenspaces. Rights of way can be turned into parks, private land owners agreeing to create a park space beside their development can also help.
- The goal is building-in nature (pollinatory planting, water features or something that creates nature and respite for eye and senses).
- Pocket parks: the most recent is at the corner of Cedar Hill and Shelbourne Street (Gore Peace Memorial Park). It is being used quite a bit. More trees will be planted.
- The main message is we want to think about being intentional now about park potential in densified areas, and when opportunities arise we can be ready to work with developers or the school board to create public spaces.

Committee comments/questions and staff responses to questions:

- The Strategic plan has a variety of targets for the amount of greenspace per 1000 people. We have informally mapped the 10 minute mark (1/2 km). This has not been adopted by Council yet.
- It will be important to create greenspace and dog spaces. These are things Council can look at.
- There is no doubt a little greenspace is calming in an urban area.
- This is part of the natural intelligence piece and how parks help with emotional intelligence as well.
- Covid has shown that parks are part of a healthy community.
- Sometimes streets can be so green just with trees lining them. This is part of the new approach to community planning. Shelbourne Valley has language around the memorial trees. The Cordova Bay draft plan also has specific language about streetscapes.
- The Engineering department plans complete streets that include cars, bikes, walkers and trees. Trees used to be left out of this planning. Even commercially, things are changing, more people will go in a commercial area with trees.
- A greenway is planned in the Shelbourne Valley following Bowker Creek along the Browning Park.
- Question raised about the process to identify corner or easement gardens; are there community gardens.
- Corner gardens (eg. horticultural displays at McKenzie/Cedar Hill Cross Rd, Richmond/Cedar Hill Cross, Glanford, etc.) purpose is to add colour and interest into the landscape. There are no plans for more unless the opportunity presents itself.
- There is a policy on community gardens to have at least one community garden in every neighbourhood in Saanich. This has proven to be a challenge. There hasn't been demand for these except in Gorge Tillicum park. We do need a commitment from a neighbourhood group to help in the stewardship and take on the management of them.
- Suggestion that SCAN be made aware that this is an option. Also some seniors work with community gardens. There is a community garden brochure on how to create a community garden. It's a great way for social connection but difficult to get up and established.

UPDATE – PAWS IN PARKS TEMPORARY DOG PARKS

The Senior Manager of Parks provided information regarding the temporary pop up dog park pilot project and noted.

- The short-term dog parks will be set up for two weeks at each location and this will be flexible in case something has to change.
- Parks will not be placed in natural areas, rather fields will be used.

- Sites and schedules were given. Fowler, Hyacinth, Gorge Rudd and Cadboro-Gyro parks will be among the parks hosting the temporary dog parks.
- A student has been hired to be an ambassador to the program; he is working on a survey to obtain feedback from these dog park users.
- Saanich Communications team will put out a news release and this will also be promoted in various ways.

Committee comments and staff responses to comments:

- Not all members would use a dog park. Some prefer to play frisbee freely in a field or go hiking with their dogs.
- People did see that on social media there are some people that are excited about this pilot project. This could be good for pups learning obedience and socialization.
- A goal is to find out what dog owners are looking for. It may be that areas could have larger rocks, stumps or something that makes it more engaging for dogs.
- Some have heard concerns about dogs having their shots.
- The parks having the pilot are various sizes. It is unknown how people will use the space to play. It may be that this is for dogs playing socially as opposed to throwing balls/frisbees. People who like to have their dogs off leash in unfenced area may benefit.
- Some people have had people ask questions around the potential of dogs spreading germs. We may want to add this to the survey (as a safety question).
- There could be concerns with water bowl sharing. Staff noted water won't be provided.
- Gyro park was put on the list last because of some technical issues and in discussion about migratory birds. No dogs are allowed in Gyro park until August 31.
- There could be problem with people thinking these temporary areas are the only place dogs can go. We will need to clarify that dogs are still allowed in main parks.
- Could there be a separate bin for dog poop collection? Is it compostable?
- This is a pilot and we will gather information.

UPDATE – FOOD TRUCKS IN PARKS

The Senior Manager of Parks provided an update and the following was noted:

- Three parks will host food trucks this summer.
- There has been lots of interest from food truck vendors, 18 people applied and a random draw was done for 10 vendors.
- The eight vendors that were not chosen have been drawn as reserved vendors in case something goes wrong with anyone. A list of participating vendors are noted on the Saanich website.
- Sometimes the primary vendor is not able to commit to the total week so the reserve vendors are being contacted to fill any empty spaces.
- Survey to be done with the vendors after the pilot is done.
- Vendors Must have own garbage and recycling containers for customers.
- Vendors are able to be set up between 9am – 9pm. Vendors must be out of the park by 10 p.m. They will set their own schedule and are not required to be there the whole 12 hours.

Staff confirmed that the food vendors are all local. In reply to a comment wondering if we'll get calls about music or garbage lying around, staff are hoping that vendors will take a look around the area for garbage. The student that will be overseeing the dog park and food truck project and will remind vendors to look around for garbage and can call out the maintenance group to pick up over-full garbage bins.

ADJOURNMENT

The meeting adjourned at 5:38 p.m. The next meeting is Wednesday, September 22, 2021.

Councillor Brownoff, Chair

I hereby certify these Minutes are accurate.

Committee Secretary

MINUTES
PARKS, TRAILS AND RECREATION ADVISORY COMMITTEE
Held at Saanich Municipal Hall, Council Chambers
September 13, 2021 at 4:03 pm

Present: Councillor Judy Brownoff (Chair), Ted Austin (via Teams), Leigh Campbell, Pamela Carroll, Pat Danforth (via Teams), and Amy-Jade Louie

Staff: Eva Riccius, Senior Manager Parks; Cristina Caravaca, Senior Manager, Community Services (via Teams); Gary Darrah, Manager, Park Planning and Development; Julie Lommerse, Park Planner Designer; Chris Filler, Programmer II Recreation (via Teams); Regan Pemberton, Community Programmer II Child & Youth Services (via Teams); Lynn Merry and Megan MacDonald, Senior Committee Clerks

Regrets: Kathleen Burton, Annie Djijtsa, Lyndsay Edgar and Dexter Owen

Minutes

MOVED by P. Carroll and Seconded by L. Campbell: "That the Minutes of the Parks, Trails and Recreation Advisory Committee meeting held May 26, 2021, be adopted as circulated."

CARRIED

CHAIR'S REMARKS

The Chair commented on the impact the heat has on the elderly and residents that live in homes that do not have means to combat the heat. She also made reference to the impact the heat has on certain species of trees.

SUMMER CAMP WRAP UP

The Community Programmer and the Programmer II presented the Summer Camp Report 2021 (PowerPoint on file) and made the following comments:

- Over 500 summer camps and programs were offered in 2021 with over 8,000 registrants.
- Saanich received a 60% increase in the Canada Summer Jobs grant.
- Registration revenue was over \$1 million.
- The safety of the children attending and staff with respect to COVID was paramount.
- A mentored leadership program was offered this summer with each participant volunteering for 2-4 weeks.
- Parents commented that they appreciated a safe harbour during COVID times.
- The focus next summer will be on recruitment and retention and the provision of high quality programs; this summer, staffing was challenging due to the lack of University of Victoria students.

The committee made the following comments:

- It was appreciated that it was so easy to make changes in the reservation system.

PEOPLE, PETS AND PARKS TERMS OF REFERENCE

The Park Planner Designer presented the People, Pets and Parks Update (PowerPoint on file) and made the following comments:

- A key objective of the project is to develop a framework that welcomes pets in parks in a manner that is acceptable to park users and protects wildlife and the environment.
- Consultation will take place to ensure residents' concerns are heard and reflected in the framework.
- A consultant will be selected in late 2021 with the work to start in January 2022.
- A statistically valid questionnaire will be part of the first consultation process in order to solicit a cross section of responses.
- The report will be finalized in 2023.
- The budget for the project is \$175,000 with \$20,000 earmarked for engagement.
- The final report will include the recommendations based on public engagement and a guide for monitoring success and progress.
- Animals at large are out of scope for this project.
- The report will come back to the committee prior to it going to Council.

The committee made the following comments:

- The Capital Regional District (CRD) has completed extensive work with respect to trail use; it would be helpful to include the CRD in the consultation process.
- Council should consider the creation of designated dog parks.

The Senior Manager, Parks stated:

- There were pop up dog parks in five parks this summer.
- Overall, the dog parks were well received by residents.
- The results of the survey with respect to the dog parks will feed into the consultant's work and could be presented to the committee at a future meeting.

PARKS AND ADAPTING TO HEAT

The Manager, Park Planning and Development presented and made the following comments:

- During park renewal, tree planting is considered a design feature.
- Irrigation is installed for regular watering during the first few years to ensure the trees endure.
- Certain trees are better for specific areas; arborists have developed a parks and boulevard palette.
- Shade structures near play structures are incorporated into new park design.
- Misting stations could be considered next year as a pilot project.
- At least one large and one smaller park are renewed each year.
- Once the parks work plan and budgeting for 2022 is complete, staff could present to the committee on what parks renewals are coming up.

CHURCHILL DRIVE GATE CLOSURE ON LONG WEEKENDS

The Senior Manager, Parks presented:

- Traditionally, the Churchill Drive gate is closed to vehicles until noon every day.
- During COVID, residents requested that the gate be closed during long weekends because of increased park use and safety concerns.
- Less than ten complaints of the gate being closed during long weekends were received from residents.
- Trail use data shows that thousands of pedestrians and cyclists use the trail.
- Residents are now used to the daily and long weekend closures.

The committee made the following comments:

- There is concern with the impact the closure has on those not physically able to walk to the top of Mount Douglas.
- There are approximately ten long weekends in a year that the gate would be closed.
- There are safety concerns with vehicles and the number of pedestrians at the summit.
- Communications to residents could emphasize the time that the gate is open for vehicles.

MOVED by P. Carroll and Seconded by A. Louie: “That the Parks, Trails and Recreation Advisory Committee recommends that Council approve that the long weekend closure of the Churchill Drive gate be made permanent.”

**CARRIED
with P. Danforth OPPOSED**

COMMUNITY SERVICES AND PARKS UPDATES

The Community Services and Parks updates were received by the committee.

Discussion took place on doing a park walk for the next meeting.

ADJOURNMENT

The meeting adjourned at 5:28 p.m. The next meeting is October 27, 2021.

Councillor Brownoff, Chair

I hereby certify these Minutes are accurate.

Committee Secretary

MINUTES
PARKS, TRAILS AND RECREATION ADVISORY COMMITTEE
Held at Saanich Municipal Hall, Council Chambers
October 27, 2021 at 4:07 pm

Present: Councillor Judy Brownoff (Chair), Kathleen Burton (via Teams), Leigh Campbell, Pamela Carroll, and Annie Dijotsa

Staff: Eva Riccius, Senior Manager Parks; Gary Darrah, Manager, Park Planning and Development; Nathalie Dechaine, Manager, Community Development/Business Systems; Pam Hartling, Senior Planner (Community Planning); Andrew Connell, Parks Development & Review Coordinator, Katie Turner, Park Stewardship Coordinator, Adeeb Noorani, Parks, Lynn Merry and Nancy Chaggar, Senior Committee Clerks

Regrets: Ted Austin, Pat Danforth, Lyndsay Edgar, Amy-Jade Louie and Dexter Owen

CHAIR'S REMARKS

The Chair commented that she will be re-appointed as Chair to the Parks, Trails and Recreation Advisory Committee (PTR) for a term ending fall 2022. The Senior Manager, Parks advised that Saanich won an international award for its digital communications campaign with respect to Natural Intelligence. There were over 400 applicants and Saanich's campaign focused on encouraging residents to get outside.

LOCAL AREA PLAN UPDATE

The Senior Planning (Community Planning) stated:

- Staff previously presented an overview of the Local Area Plan (LAP) updates to PTR.
- The community has now provided input and the Housing Strategy has been completed.
- Council made a motion at its March 8, 2021 Special Committee of the Whole meeting to refer the LAP update to Saanich's Advisory Committees for review and requested committees reconfirm their support.
- Recommendations from the Housing Strategy have been incorporated into the LAP update.
- Over time, Saanich may adopt policies or practices in support of housing diversity and supply that go beyond LAPs.
- LAPs will be evaluated every five years to ensure relevancy.
- LAPs provide guidance and certainty to residents, staff and developers.

Committee members made the following comments:

- The Cordova Bay community put in a lot of work in the LAP update.
- It was the consensus of the PTR to re-confirm its support for the LAP.

BOULEVARD TREE UPDATE

Councillor Brownoff introduced the item and stated that the right trees should be planted in the right locations. Boulevard trees assist with walkability, fight climate change and lower temperatures. There may be a need to consider that developers commit to increased watering requirements as part of development. The Boulevard Tree policy is outdated and needs to be refreshed. The 3-30-300 policy should be reflected in planning documents.

The Manager, Community Development/Business Systems and the Parks Development & Review Coordinator presented on Boulevard Trees in Saanich and stated:

- Trees provide a multitude of benefits including habitat, storm water management, reducing pollution and air and water purification.
- The Tree Protection Bylaw was strengthened in 2019.
- The Urban Forest Strategy was approved in 2009 with the goal to protect and enhance Saanich's urban forest.
- Other policies and guidelines including the Official Community Plan, Local Area Plans, Development Permit guidelines and the Subdivision Bylaw also have measures to protect the urban forest.
- Boulevard trees are considered trees that grow on the boulevards that are planted and/or maintained by Saanich.
- New builds, upgrades and maintenance can impact boulevard trees.
- Parks staff are tasked with planting and maintaining trees, seeking planting partnerships and restoring natural areas.
- It is necessary to ensure the right tree is planted in the right location; the suitable class and size of tree is considered when choosing trees to be planted.
- Staff also consider planting in terms of proximity to infrastructure both existing and future, sightlines and soil volume.
- The biggest challenge for staff is finding suitable planting areas.
- There may be a need for increased watering requirements due to increased drought.
- Opportunities include increased public support, more appreciation of trees, new technology and design features and a diversity of available tree species.
- The Urban Forest Strategy update will be in Q1 2022 and consider the Boulevard Tree Policy, Tree Protection Bylaw and other Saanich policies and initiatives.
- Going forward tree mapping and tracking is underway; staff are seeking additional partnerships to help get more trees into neighbourhoods.
- A boulevard is the area between the edge of the road and the property line; the size of the boulevard varies depending on the type of road.
- Staff are always refining the type of tree species that are appropriate and stay up to date in providing a diverse pallet of trees.

Committee members made the following comments:

- The walking environment should be enhanced with tree planting.
- The work of staff is appreciated.
- Planning and Engineering staff will be requested to attend the next meeting to discuss their part in the planting boulevard trees.

INVASIVE SPECIES IN PARKS UPDATE

The Senior Manager, Parks presented Invasive Species Management in Parks and on Boulevards and stated:

- The Growing Natural Intelligence initiative takes into consideration invasive species management.
- The community and Council supports the growth of the program.
- The Invasive Species Strategy was adopted in 2013 and includes prevention, the active management of priority invasive species, public outreach and support, staff education, guidance for the proper removal of invasive species, enforcement of the Noxious Weed Bylaw and working with regional and provincial partners for effective management.
- Invasive species on private lands is managed by Environmental Services; Bylaw Enforcement deals with noxious weeds bylaws.
- There are over 500 sites that staff manage; there are also 44 official Pulling Together

- volunteer projects with volunteers logging more than 1500+ volunteer hours per year.
- Staff support Pulling Together by doing pick ups, mulch and chip requests for restoration sites, work party support and putting in plant and seed orders.
- There are demands for more data entry into the GIS system, better mapping and field surveys, Species at Risk surveys, expansion of the Garry oak and ecosystem protection fencing and support for work parties.
- The Pulling Together program has expanded by double; there is a need for dedicated support.
- Noxious weeds are incinerated; invasive species are composted.
- Through the Significant Tree program, residents can apply for tree trimming at a cost share of the lowest of three quotes.
- The work of the Resilient Saanich Technical Committee includes looking at incentives.
- Staff are working to build significant partnerships with school groups.
- It is likely that the Fire Department would not support controlled burns.

POP UP DOG PARK SUMMARY

The Senior Manager, Parks presented the Pop Up Dog Park Summary and stated:

- Temporary pop up dog parks were set up in five Saanich parks for two weeks each as a pilot project; the pilot project was a result of concerns of dog owners and non-dog owners in parks.
- An online survey was conducted with a total of 585 responses collect.
- All five parks were well visited and owners stated that they would use an enclosed dog park if they were made permanent.
- Owners stated that they walked dogs off leash in Saanich parks daily.
- Verbal comments included the need for water, shade and seating and an improved gate system and fencing; most people said that additional signage is not needed.
- Concerns with having an enclosed dog park in their neighbourhood were identified as owners not controlling their dogs, possible aggressive dogs and cleanliness/owners not picking up after their dogs.
- The survey results will be considered as part of the People, Pets and Parks Strategy.
- Residents commented on the social nature of dog parks for humans.
- The pilot project was completed within approved budget.

Committee members made the following comments:

- This was a great opportunity and program.
- It is hoped that the People, Pets and Parks Strategy will ramp down the conflict with park users.

FIELD TRIP

The Senior Manager, Parks advised that a walk through Cuthbert Holmes Park would take place on Friday, October 29, 2021 at noon.

ADJOURNMENT

The meeting adjourned at 5:54 p.m. The next meeting is November 24, 2021.

Councillor Brownoff, Chair

I hereby certify these Minutes are accurate.

Committee Secretary



The Corporation of the District of Saanich

Report

To: Mayor and Council
From: Suzanne Samborski, Director, Parks, Recreation and Community Services
Date: 11/17/2021
Subject: 2022-2024 Parks and Recreation Fees and Charges

RECOMMENDATION

That Council approve the proposed 2022-2024 Parks and Recreation Fees and Charges schedule, previously endorsed by the Parks Trails and Recreation Committee.

PURPOSE

The purpose of this report is to present the proposed 2022-2024 Parks and Recreation Fees and Charges to Council for review and approval.

DISCUSSION

Recreation

Fees and charges for parks and recreation facilities and services are reviewed annually in conjunction with the budget process. Over the past 18 months, COVID has had a significant impact on the ability for municipal recreation divisions to offer programs, services and activities. In addition, most municipalities in BC, including the District of Saanich, suspended the sale of passes (annual or otherwise) and moved to a system of reserved drop-in or registered program offerings that participants pay for per registration, as opposed to being able to use a pass. This was based in part on the requirement for centres to ensure that registration records were kept for COVID contact tracing, and in part on the ability for municipalities to ensure services offered are at minimum revenue neutral or more frequently, revenue positive, in the interest of safeguarding the public taxpayer dollar.

Parks, Recreation and Community Services ("PRCS") received a number of comments regarding the increased cost per visit at recreation centres for patrons who previously held a pass, and fielded numerous questions about when passes would be available for purchase and use. Pass sales were resumed in Saanich in July 2021. Recreation made the decision not to raise fees during the COVID period, given the already present pandemic-related financial constraints on many residents, and the uncertainty of the ability to offer the full suite of services usually included in the more cost-effective access passes.

At the same time, the District's community recreation centres continue to age, and despite reduced traffic in 2020 and 2021, require continued maintenance and upgrades to ensure the safety of patrons and staff, as well as the quality of experience for patrons and user groups. As such, staff recommends increasing most rental rates and access fees for recreation centre amenities by 2% each year 2022 through 2024. Throughout 2020 and 2021 very few rentals have been able to take place due to COVID-related restrictions, and it is expected that rentals will be able to resume in a significant way no sooner than 2022. This modest increase for both

rentals and for access fees will allow for a reasonable response to the increasing cost of expenses to run aging facilities, in a small enough increment to allow it to be manageable by users.

In some cases, after reviewing local market conditions, smaller increases are recommended. For example, ice rental rates at G.R. Pearkes are already the highest market rate in the Greater Victoria area, so a 1% increase is proposed. That said, racket sport court rentals are recommended to increase by 3%, as the market will bear such rates.

Golf Fees and Rates

Despite an initial pandemic-related closure of six weeks in 2020, Cedar Hill Golf Course has had a very busy season, with over 48,000 rounds played in 2020 and again in 2021. The Golf Operations Services Review's final report and recommendations were published in fall of 2021, with a full suite of rate recommendations for the coming years. Staff recommend that the following recommendations, further specified in Appendix A, be implemented over the coming three years, through the 2024-2025 golf season:

After an initial increase to most green fees ranging from 3% to 10%, none of which amount to more than \$3 per round; a 1.5% annual increase is proposed through 2024-2025.

In addition, in 2023 PRCS will introduce a Flex Pass as a replacement for the annual pass. The Flex Pass will begin in the 2023-2024 season, and require a \$350 upfront payment in conjunction with discounted green fees.

The annual pass will be discontinued after 2022-2023. To mitigate the impact on current annual pass holders, the opportunity to purchase an annual pass at the 2022-2023 rate for one additional year, 2023-2024, will be offered to golfers who hold an annual pass in 2022-2023. These changes will allow the Cedar Hill Golf Course to keep rates competitively attractive in the local market at all price points, yield a higher rate per round, and modernize the pass system to be in line with industry standard.

Parks

Based on an environmental scan of local districts and municipalities, no changes to Park Permit fees, other than commercial rates, are proposed for 2022. Commercial fees have a set formula of three times a single permit rate for quarterly commercial permits, and five times a single permit rate for an annual commercial permit. For the subsequent years, a 2% increase is recommended based on 2022 rates.

RECOMMENDATIONS:

Staff recommend that:

1. Council approve and adopt the proposed 2022-2024 Fees and Charges Schedules as described in the report, to be included in the 2022 Financial Planning process.
2. Council approve the ability for PRCS to reduce rates by a percentage point during the 2022-2024 period if market conditions change significantly.

CONCLUSION

After close to two years of pandemic-related uncertainty, particularly around access to services and budget, PRCS proposes a three-year plan for fees and charges to provide that certainty for residents going forward, and to allow staff to better forecast revenues. Staff will continue to review fees and charges in conjunction with the budget process on an annual basis, and course-correct through submission to Council as required should expenses rise significantly or the local market shifts in the coming years.

Prepared by

Tiana Solares
Senior Manager, Parks, Recreation and
Community Services

Approved by

Suzanne Samborski
Director, Parks, Recreation and
Community Services

CHIEF ADMINISTRATIVE OFFICER'S COMMENTS

I endorse the recommendation from the Director of Parks, Recreation and Community Services.

Paul Thorkelsson
Chief Administrative Officer

Attachment – Parks, Recreation and Community Services Fees and Charges

RECREATION Schedule A		Recommendation		
		Sept 1, 2022 Implementation	Sep 1, 2023 Implementation	Sept 1, 2024 Implementation
		2% Increase (taxes included - rounded to the nearest \$0.25)	2% Increase (taxes included - rounded to the nearest \$0.25)	2% Increase (taxes included - rounded to the nearest \$0.25)
Drop-in General Admissions for Swimming, Skating, Weight Room, Drop-in				
Adult 19+	Single Admission	\$ 7.25	\$ 7.25	\$ 7.50
	Book of 10 Admissions	\$ 65.25	\$ 65.25	\$ 67.50
	Continuous	\$ 41.40	\$ 42.10	\$ 43.50
	Annual	\$ 496.80	\$ 505.20	\$ 522.00
Student (19+ or with valid ID) / Senior (60+)	Single Admission	\$ 6.30	\$ 6.50	\$ 6.80
	Book of 10 Admissions	\$ 56.70	\$ 58.50	\$ 61.20
	Continuous	\$ 30.90	\$ 31.90	\$ 33.40
	Annual	\$ 370.80	\$ 382.80	\$ 400.80
	Lifetime Membership - 90+ years	Free	Free	Free
Child (5-12) / Youth (13-18)	Single Admission	\$ 4.20	\$ 4.30	\$ 4.50
	Book of 10 Admissions	\$ 37.80	\$ 38.70	\$ 40.50
	Continuous	\$ 20.60	\$ 21.10	\$ 22.10
	Annual	\$ 247.20	\$ 253.20	\$ 265.20
Family (Equal rate to 2 adults)	Single Admission	\$ 14.50	\$ 14.50	\$ 15.00
	Book of 10	\$ 130.50	\$ 130.50	\$ 135.00
	Continuous	\$ 82.80	\$ 84.20	\$ 87.00
	Annual	\$ 993.60	\$ 1,010.40	\$ 1,044.00
Child-minding	Single Admission	\$ 5.00	\$ 5.50	\$ 6.00
	Book of 10 Admissions	\$ 48.25	\$ 49.25	\$ 50.25
	Book of 25 Admissions	\$ 113.75	\$ 116.00	\$ 118.25
Court Rental	Tennis – Indoor	\$ 34.00	\$ 35.00	\$ 36.00
	Squash	\$ 27.50	\$ 28.00	\$ 29.00
	Jr Squash	\$ 6.75	\$ 7.00	\$ 7.25
	10x Squash	\$ 105.00	\$ 108.00	\$ 111.50
	Badminton/Pickleball (charge per net)	\$ 17.50	\$ 18.25	\$ 18.75

Misc Fees	Showers	\$ 3.25	\$ 3.50	\$ 3.50
------------------	---------	---------	---------	---------

		Sept 1, 2022 Implementation	Sep 1, 2023 Implementation	Sept 1, 2024 Implementation
Saanich Commonwealth Place – Room Rentals		2% Increase (taxes included)	2% Increase (taxes included)	2% Increase (taxes included)
Room Rentals	Garry Oak Gym (hour - 400-500 capacity)	\$ 109.24	\$ 111.43	\$ 113.66
	Garry Oak Gym (day)	\$ 1,303.67	\$ 1,329.75	\$ 1,356.34
	Gym Sport Rate	\$ 53.28	\$ 54.35	\$ 55.43
	Arbutus Board Room (hour - 50 capacity)	\$ 46.86	\$ 47.79	\$ 48.75
	Arbutus Board Room (day)	\$ 323.98	\$ 330.46	\$ 337.07
	Red & Yellow Cedars (hour - 100 capacity)	\$ 65.87	\$ 67.18	\$ 68.53
	Red & Yellow Cedars (day)	\$ 456.78	\$ 465.92	\$ 475.24
	Pacific Dogwood (hour - 30 capacity)	\$ 39.89	\$ 40.69	\$ 41.51
	Pacific Dogwood (day)	\$ 278.73	\$ 284.30	\$ 289.99
	Douglas Fir (hour - 70 capacity)	\$ 46.86	\$ 47.79	\$ 48.75
	Douglas Fir (day)	\$ 323.98	\$ 330.46	\$ 337.07
	Dance Studio (hour - 32 capacity)	\$ 66.13	\$ 67.46	\$ 68.81
	Dance Studio (day)	\$ 452.23	\$ 461.27	\$ 470.50
	Multi-Purpose Yoga Room (hour - 50 capacity)	\$ 66.13	\$ 67.46	\$ 68.81
	Multi-Purpose Yoga Room (day)	\$ 452.23	\$ 461.27	\$ 470.50
	Aquatic Classroom (hour - 20 capacity)	\$ 33.47	\$ 34.14	\$ 34.82
Upside Teen Activity Lounge (/hr, 50 capacity)	\$ 59.98	\$ 61.18	\$ 62.40	
Saanich Commonwealth Place – Pool Rentals/Lessons		2022 2% Increase (taxes included)	2023 2% Increase (taxes included)	2024 2% Increase (taxes included)
POOL / RENTALS / LESSONS	Private or Commercial/Lane (25m)	\$ 30.26	\$ 30.86	\$ 31.48
	Swim Club or Non-profit/Lane (25m)	\$ 16.60	\$ 16.93	\$ 17.27
	Schools (Includes 1 guard per 25 students)	\$ 65.82	\$ 67.14	\$ 68.48
	Schools (Additional guards – 1 for every 25)	\$ 38.29	\$ 39.05	\$ 39.84
	Schools (Instructors – 1 per 7 students)	\$ 38.29	\$ 39.05	\$ 39.84
	Commercial additional staff fee	\$ 65.82	\$ 67.14	\$ 68.48
Private Rentals	Leisure & Lap pools (2 guards up to 40 people) during operating hours	\$ 145.12	\$ 148.02	\$ 150.98
	Leisure & Lap pools (2 guards up to 40 people) after operating	\$ 170.02	\$ 173.42	\$ 176.89

Gordon Head – Pool Rentals/Lessons		2022 2% Increase (taxes included)	2023 2% Increase (taxes included)	2024 2% Increase (taxes included)
POOL / RENTALS / LESSONS	Private or Commercial/Lane (25m)	\$ 30.26	\$ 30.86	\$ 31.48
	Swim Club or Non-profit/Lane (25m)	\$ 16.60	\$ 16.93	\$ 17.27
	Schools (Includes 1 guard per 20 students - flat fee for 2 hrs)	\$ 65.82	\$ 67.14	\$ 68.48
	Schools (Instructors – 1 per 7 students)	\$ 38.29	\$ 39.05	\$ 39.84
	Private or Commercial additional lifeguard fee (1 lifeguard per 20 students - flat fee for up to 2 hrs)	\$ 65.82	\$ 67.14	\$ 68.48
Private Rentals	Leisure & Lap pools (2 guards up to 40 people) during operating hours	\$ 145.12	\$ 148.02	\$ 150.98
	Leisure & Lap pools (2 guards up to 40 people) after operating	\$ 170.02	\$ 173.42	\$ 176.89
	Lap pool only during operating hours	\$ 96.74	\$ 98.68	\$ 100.65
	Leisure pools only during operating hours	\$ 48.38	\$ 49.34	\$ 50.33
Gordon Head Community Recreation Centre - Room Rentals		2022 2% Increase (taxes included)	2023 2% Increase (taxes included)	2024 2% Increase (taxes included)
POOL / RENTALS / LESSONS	Mt. Douglas Auditorium (per hour)	\$ 61.85	\$ 63.09	\$ 64.35
	Mt. Douglas Auditorium (banquet/dance)	\$ 517.56	\$ 527.91	\$ 538.47
	Bert Richman Auditorium (per hour)	\$ 61.85	\$ 63.09	\$ 64.35
	Bert Richman Auditorium (banquet/dance)	\$ 517.56	\$ 527.91	\$ 538.47
	Feltham Room (per hour)	\$ 46.32	\$ 47.25	\$ 48.19
	Feltham Room (full day 7 hours)	\$ 279.00	\$ 284.58	\$ 290.27
	Kenmore Room (per hour)	\$ 43.64	\$ 44.52	\$ 45.41
	Preschool Room (per hour)	\$ 49.53	\$ 50.52	\$ 51.53
	Backdoor Teen Centre (per hour)	\$ 57.83	\$ 58.99	\$ 60.17
	Dance Studio (per hour)	\$ 57.83	\$ 58.99	\$ 60.17
	Annex (per hour)	\$ 55.96	\$ 57.08	\$ 58.22
	Multi-purpose 1 (per hour)	\$ 58.10	\$ 59.26	\$ 60.45

Cedar Hill Community Recreation Centre – Room Rentals		2022 2% Increase (taxes included)	2023 2% Increase (taxes included)	2024 2% Increase (taxes included)
Room Rentals	Gymnasium (per hour)	\$ 64.53	\$ 65.82	\$ 67.13
	Gymnasium (Function/Event)	\$ 816.10	\$ 832.42	\$ 849.07
	Multi-purpose Room (per hour)	\$ 52.75	\$ 53.80	\$ 54.88
	Dance Studio (per hour)	\$ 46.32	\$ 47.25	\$ 48.19
	Activity Room (per hour)	\$ 39.09	\$ 39.87	\$ 40.67
	Art Room 1 (per hour)	\$ 71.76	\$ 73.19	\$ 74.66
	Art Room 2 (per hour)	\$ 71.76	\$ 73.19	\$ 74.66
G.R. Pearkes Community Recreation Centre – Arena, Skate, Dry Floor & Room Rentals		2022 2% Increase (taxes included)	2023 2% Increase (taxes included)	2024 2% Increase (taxes included)
ARENA RENTAL	Youth Associations - Non Prime	\$ 109.23	\$ 110.32	\$ 111.43
	Youth Associations - Prime & Off Hours rate	\$ 128.25	\$ 130.82	\$ 133.43
	Winter - Prime	\$ 246.60	\$ 251.53	\$ 256.56
	Winter - Non Prime	\$ 213.96	\$ 216.10	\$ 218.26
	Spring/Summer - Prime	\$ 168.17	\$ 173.22	\$ 178.42
	Spring/Summer - Non Prime	\$ 142.90	\$ 144.33	\$ 145.77
	School Rate - Non Prime	\$ 29.40	\$ 29.99	\$ 30.59
Skate Rentals	Skate rental - General	\$ 3.75	\$ 4.00	\$ 4.00
	Group rate (10+) (Rentals only)	\$ 3.00	\$ 3.00	\$ 3.25
	Group rate (10+) (no rentals)	\$ 3.25	\$ 3.50	\$ 3.50
	Family Rate (Skating including rentals)	\$ 17.25	\$ 17.75	\$ 18.00
Sharpening	Sharpening	\$ 5.00	\$ 5.25	\$ 5.25
Dry Floor	Lacrosse, Ball Hockey and Roller Hockey (Dry Floor)	\$ 41.50	\$ 42.33	\$ 43.18
	Ball and Roller Hockey, Other (Dry – Adults)	\$ 81.13	\$ 82.75	\$ 84.41
Room Rentals	Clubroom (1 hour) (Day rate is 10x hourly)	\$ 33.47	\$ 34.14	\$ 34.82
	Ross Room Multipurpose (hour) (Day rate is 10x hourly)	\$ 59.17	\$ 60.36	\$ 61.56
	Gardom Room (hour) (Day rate is 10x hourly)	\$ 46.86	\$ 47.79	\$ 48.75
	Lam Room/Owen Room (hour) (Day rate is 10x hourly)	\$ 53.55	\$ 54.62	\$ 55.71
	Lam Room/Owen Room (childcare, non-prime)	\$ 6.69	\$ 6.83	\$ 6.96
	Lam Room/Owen Room (childcare, prime)	\$ 13.39	\$ 13.66	\$ 13.93
	Flipside (hour) (Day rate is 10x hourly)	\$ 59.71	\$ 60.90	\$ 62.12

	Boardroom (hour) (Day rate is 10x hourly)	\$ 48.20	\$ 49.16	\$ 50.14
Fieldhouse	Fieldhouse (Sept - April)	\$ 4,026.96	\$ 4,107.50	\$ 4,189.65
	Fieldhouse (May - Aug)	\$ 2,014.02	\$ 2,054.30	\$ 2,095.38
	Arena Dry floor	\$ 2,481.77	\$ 2,531.41	\$ 2,582.04
	Sport Court Regular (Sept - April)	\$ 56.50	\$ 57.63	\$ 58.78
	Sport Court Non-Profit (Sept - April)	\$ 42.57	\$ 43.42	\$ 44.29
	Sport Court Regular (May - Aug)	\$ 37.22	\$ 37.96	\$ 38.72
	Sport Court Non-Profit (May - Aug)	\$ 29.45	\$ 30.04	\$ 30.64
Outdoor Spaces	Front Plaza (half day)	\$ 105.00	\$ 107.10	\$ 109.24
	Front Plaza (day)	\$ 210.00	\$ 214.20	\$ 218.48
	Courtyard Non-Profit (hour)	\$ 17.33	\$ 17.67	\$ 18.02
	Courtyard Sep-Apr (hour)	\$ 21.79	\$ 22.22	\$ 22.67
	Courtyard Non-Profit May-Aug (hour)	\$ 33.34	\$ 34.00	\$ 34.68
	Courtyard May-Aug (hour)	\$ 24.94	\$ 25.44	\$ 25.94
Storage/Office Rental	Interior Storage/Office space (per sq ft)	\$ 0.46	\$ 0.47	\$ 0.48
	Exterior Storage/Office space (per sq ft)	\$ 0.46	\$ 0.47	\$ 0.48



Report

To: Parks, Trails and Recreation Advisory Committee
From: Gary Darrah, Manager of Park Planning and Development
Date: 09/23/2021
Subject: Food Truck Pilot Program – Results and Recommendations

RECOMMENDATION

That PTR recommends to Council to continue the Food Truck Program as outlined in the recommendations of this report.

PURPOSE

The purpose of this report is to outline the results of the Food Truck Pilot Program (Summer 2021) and provide a recommended approach for Summer 2022.

BACKGROUND

The Food Truck Pilot Program was endorsed by Council on March 16, 2020. Implementation was delayed until summer 2021 as a result of COVID19.

Temporary Use Permits

Food trucks were not able to legally operate in Saanich because they are not permitted in any zone, making it impossible for vendors to obtain business licences or fire safety inspections. In order to conduct the Pilot Program, Parks was required to register a Temporary Use Permit (TUP) on each of the proposed parcels. Parks also used TUPs to legitimize long lasting Saanich-sponsored events that host food trucks.

These TUPs allow food trucks to operate regardless of how the property is zoned. TUPs are valid for 3 years and specify how and where in the parcel vendors may operate. Once expired, TUPs may be renewed for an additional three (3) year term. Afterwards, amendments to the Zoning and Street and Traffic Bylaws would be necessary for food trucks to continue to operate in any Saanich Parks.

Food Truck Pilot Program Locations

Three (3) locations, approved by Council, were utilized for this pilot: Cadboro-Gyro Park, Beckwith Park, Gorge Waterway Park. Deciding factors were the high volume of traffic, suitable hard-surface areas and washroom facilities. Up to one (1) vendor was allowed at Gorge Waterway Park and up to two (2) vendors at the remaining parks due to available space.

Mount Douglas and Mount Tolmie were also proposed to be included; however, they were not supported by community and Council.

Participating Vendors

Vendors were made aware of opportunities using the Saanich website, social media channels as well as through traditional media. A lottery system decided which vendors would be main participants and which would be reserves. There were ten (10) main vendors chosen, however only eight (8) vendors participated:

1. Holy Cow Mini Donuts
2. Sub Zero Ice Cream
3. FreshCoast Health Food Bar
4. Spice Aid – Operation BBQ
5. Cup-A-Roni
6. Quadra Village Community Centre – The Food Kart
7. Elements Ice Cream
8. Candytime Concessions

*of the main vendors, one (1) dropped out halfway

There were four (4) reserve vendors:

1. Kattia's Kitchen Authentic Mexican
2. Sassy Thai Café
3. Greek on the Street
4. BeaverTails Pastry

Program Details

The program ran for ten (10) weeks from July 1st to September 8th, 2021. Vendors were allowed to operate between 9:00 a.m. – 9:00 p.m. in their designated spots while ensuring to leave the park by 10:00 p.m.

Vendors were required to:

- Be self-sufficient for water and power;
- Use generators that comply with the Noise Bylaw;
- Provide their own garbage, recycling, and compost bins;
- Provide standard licenses, insurance, and permits (including business license and fire safety inspection and requirement checklist).

Business licenses were issued free of charge. No other fee was charged to participate in the pilot project.

DISCUSSION

Pilot Results

Staff and vendors had good learnings through this pilot project. Challenges and opportunities to improve were identified.

Challenges included scheduling and vendor placement. There were some problems related to scheduling as a result of some of the vendors' commitments to other locations. Filling the schedule sometimes meant duplication of food types at one location.

All vendors who applied to this pilot were accommodated. Managing the pilot proved to be time consuming for staff. Arranging meetings, confirming locations and insuring all licenses and inspections were in place for each vendor took significant time.

Vendors also had varying needs. Each vendor has a rig of different length, width, and service window sides. The type of physical space they require resulted in only one (1) vendor able to conduct business in Gorge Waterway Park.

Many vendors' ideal location involves spaces where people congregate with certainty. The layout of Gorge Waterway Park is long and stretched out. This promotes park users to pass by vendors at this location rather than gathering nearby. The number of park users at this park may be sufficient, however, all park visitors may not be aware and/or visit the vicinity of the vendors.

FEEDBACK OBTAINED

Park visitors, community members and vendors were encouraged throughout the summer to complete a survey related to the food truck pilot project as well as to send in any comments to Parks. Although the opportunity to provide feedback was encouraged and shared via many platforms, the number of surveys completed is relatively low, especially in relation to park visits at Beckwith and Cadboro-Gyro Parks. As a result, our general conclusion, would be that park visitors did not have strong opinions about the presence of food trucks in these parks.

Emails

Five (5) emails were received throughout the duration of the pilot.

- 60% were disappointed they did not encounter a vendor at a park;
- 40% were in support of the pilot;
- 25% wanted more savory options.

Public Surveys

Two public surveys were conducted. One was online and the other via conversations held by a Saanich employee at the designated parks.

Total of 22 online surveys were received:

- 71 % were in response to Cadboro-Gyro Park;
- 100% either agreed or strongly agreed that food trucks should be allowed to conduct business in Saanich Parks;
- 33 % said that the purpose to visit the park was the food trucks.

Total of 11 verbal surveys were received:

- 100% were supportive of food trucks in Saanich Parks;
- 45% made a purchase from a vendor;
 - 20% of those who made a purchase would have gone to a local business if not for the food truck vendors.

Vendor Survey

One online survey was conducted at the end of the pilot for the vendors who participated. All 12 vendors who participated completed the survey.

Of the vendors who conducted business in Cadboro-Gyro Park, 100% stated they would return. The traffic at this park made it a desirable location.

Of the vendors who conducted business in Beckwith Park, 70% stated they would return. This park was a hit or miss due to the irregular amount of park users.

The one vendor who could conduct business at Gorge Waterway Park had a positive experience, however, they were only able to attend on weekends throughout the pilot.

All vendors stated they would conduct business in Saanich Parks if this pilot continued.

Vendor suggestions to improve the pilot:

- Provide vendors information about events scheduled in the given park(s);
- Create a platform where vendors can independently notify each other of dates they are able to fill;
- Ensure that two vendors selling similar products are not scheduled at the same location and date;
- More advertising;
- Ensure sufficient space for vendors to set-up is provided.

Additional parks to host food trucks were suggested:

- Mount Douglas Park
- Mount Tolmie Park
- Braefoot Park
- Lambrick Park
- Hampton Park
- Non Saanich Park mentioned:
Elk/Beaver Lake

At this time, it is not possible to expand the program due to TUP requirements and Council direction.

FUNDING

While the pilot project development and implementation was supported by a Park Planner and Summer Student, going forward, much of the groundwork has been laid and the project will only require implementation support in 2022. This is estimated at approximately one (1) day per week for the duration of the summer, and may be performed by a Summer Student. This may be funded through Parks' operating budget with support from a student grant offered by the federal government.

RECOMMENDATIONS

Future improvements to the program involve reducing the number of participating vendors, simplifying schedule building, securing vendor commitments, and more advertisement prior to, and during, the project.

Recommendations for summer 2022 include:

1. To run the pilot for ten (10) weeks from July to September.
2. Utilize Beckwith and Cadboro-Gyro Parks as sites to host vendors with the following considerations: Beckwith Park may result in an unreliable schedule due to an inconsistent amount of daily park users whereas Cadboro-Gyro Park provided sufficient business to warrant continued vendor participation.
3. Reconsider Gorge Waterway Park as a location as it does not provide adequate space.
4. Reduce the amount of vendors participating; eight (8) is the maximum that could be well managed at Beckwith and Cadboro-Gyro Park. Procurement process to be determined.
5. In order to develop greater vendor commitment and certainty for park visitors, consider having vendors pay for their business licenses to increase motivation to attend as scheduled.
6. Provide vendors with a list of summer scheduled events at these parks.
7. Increase advertisements on both Saanich social media and platforms used by vendors themselves.

CONCLUSION

This pilot project was well received by the public and food truck vendors. Cadboro-Gyro Park was the most successful of the locations due to its large number of daily visitors. Beckwith Park was unpredictable for vendors due to the irregular amount of parks users. Lastly, Gorge Waterway Park was not viable due to the limitations in size of the permitted area.

For the vendors, the success of the locations depended on the average number of park users. For Saanich, the success of the pilot was based on the reliability of the schedule and receptivity of the public and vendors. The creation of a more reliable schedule along with the additional recommendations noted above will improve the project for vendors, park visitors and Saanich.

Report prepared by: Adeeb Noorani, Student Parks Technician

Report reviewed by: Gary Darrah, Manager of Park Planning and Development

Report approved by: Eva Riccius, Senior Manager, Parks



The Corporation of the District of Saanich

Report

To: Parks, Trails and Recreation Advisory Committee
From: Eva Riccius, Senior Manager, Parks
Date: 09/23/2021
Subject: Saanich as a Bird Friendly City

RECOMMENDATIONS

1. That the Parks Trails and Recreation Committee recommend to Council pass a motion to formally nominate Saanich to become a Bird Friendly City and provide a letter to Nature Canada with the motion as part of the Saanich application.
2. That the Parks Trails and Recreation Committee recommends to Council to direct staff to initiate a community engagement in partnership with the Swan Lake Christmas Hill Nature Sanctuary Society to name a City Bird.

PURPOSE

The purpose of this report is to provide information about Nature Canada's Bird Friendly City Program and request that PTR make a recommendation to Council that Saanich become a Bird Friendly City.

BACKGROUND

Nature Canada is one of the oldest national nature conservation charitable organizations in Canada. For 80 years, Nature Canada has helped protect over 110 million acres of parks and wildlife areas in Canada and countless species. Today, Nature Canada represents a network of over 130,000 members and supporters, and more than 1,000 nature organizations.

In the last 50 years, North American bird populations have dropped by more than 25%. Three billion of our birds, including common species that live in our towns and cities, are gone. Nature Canada aims to reverse this trend with science-backed action through the Bird Friendly Cities Initiative.

A Bird Friendly City is a community where:

- Key threats to birds are effectively mitigated;
- Nature is restored so native bird populations can thrive;
- Residents are actively engaged in admiring and monitoring local bird populations;
- Organizations are creating events to protect birds;
- Progressive municipal policies are created to protect urban bird populations; and
- A Bird Team has been created to oversee and lead these initiatives.

DISCUSSION

Through a collaboration with Swan Lake Christmas Hill Nature Sanctuary (SLCHNS), Saanich Parks has formed a Bird Team and is applying to be a Bird Friendly City through this program.

Our application will be adjudicated by Nature Canada using a number of criteria such as education and stewardship opportunities geared to residents, along with local government commitments including an overarching motion of support from Council.

Saanich Parks already meets many of the criteria for the designation such as removal of invasives and restoration with native plantings, stewardship opportunities and providing education tools. This initiative is also an excellent fit with the Saanich Natural Intelligence program.

Our partnership with Swan Lake Christmas Hill Nature Sanctuary in this project will also increase the awareness of birds in the city. For example, educational exhibits installed in Swan Lake's Nature House will display how to mitigate bird collisions with windows. Handouts and social media posts will help to extend the reach of these materials. Both Saanich and SLCHNS are members of the Greater Victoria NatureHood which regularly has community bird programs, such as World Migratory Bird Day.

To engage with residents further, Park and SLCHNS would like to partner to nominate and designate a City Bird for Saanich.

IMPLICATIONS

There are many positive implications and minimal costs of becoming a Bird Friendly City. Some key positive impacts include:

- Heightened awareness about nature, compatible with the Natural Intelligence campaign;
- Increased interest in conservation leading to further regional climate resilience as per the Climate Plan and Official Community Plan;
- A positive, celebratory community outreach program with little cost.

CONCLUSION

In summary, Saanich Parks is well positioned in partnership with the Swan Lake Christmas Hill Nature Sanctuary and with the support of Council, to become a Nature Canada Bird Friendly City.

Report prepared by: Eva Riccius, Senior Manager, Parks



PARKS, RECREATION
& COMMUNITY SERVICES

REPORT TO: Parks, Trails & Recreation Committee, Environmental and Natural Areas, and Healthy Saanich Committees

DATE: November 17, 2021

FROM: Eva Riccius, Senior Manager, Parks

SUBJECT: Parks Division Update – November, 2021

The following update is provided for Committees:

Community Development and Business Systems

Park user groups:

Parks spaces continue to be busy with Fall / Winter league soccer, school district(s) sports games and classes and Saanich-run initiatives primarily. Groups are being advised to ensure their operations are in compliance with the BC Restart Plan, PHO order – Gatherings and events and guidelines from their applicable governing bodies.

There are many project applications from our home user groups to help improve our park infrastructure, which are in the process of being adjudicated. The most notable is the Braefoot Park Field Lights Replacement starting soon which will replace 39 tungsten-halide bulbs with LED fixtures. This is a great sustainability upgrade to the facility which will reduce maintenance, reduce light spillage, have significant energy savings and more positive environmental impacts.

Park Stewardship Update:

Youth Stewards in Parks

Parks supported school groups in parks such as McMinn, Haro Woods, Mount Tolmie, Feltham, Cedar Hill and Marigold. Most school groups have been busy carefully removing invasive species (like English Ivy, Himalayan Blackberry and Scotch Broom), and look forward to helping out with replanting some of these sites with native plants in the coming weeks. Almost 100 students from Claremont Secondary and Lochside Elementary Schools assisted with tree and native shrub planting at McMinn Park in the lead up to Tree Appreciation Day. It was a positive experience for all as expressed by one of the teachers at Lochside Elementary.

“A big thank you for yesterday's tree planting session at McMinn. Your fellow parks and rec leaders were awesome, and the kids loved learning and taking part”. We frequently visit McMinn and are always looking for ways to give back”.



Lochside grade 1's watching a tree planting demo before they get to work



Claremont grade 9's admiring their newly planted Western Red Cedar tree

Pulling Together and Park Ambassador Volunteers

Pulling Together and Park Ambassador volunteers are busy in the parks. We recently oriented several new Park Ambassador volunteers who will be an excellent addition to the team at Mount Douglas Park. Pulling Together volunteers are preparing their sites for planting season. We have 20+ volunteer restoration sites that will be planted by volunteers and Parks staff over the next few weeks. We were unable to host an in-person volunteer recognition event this fall, but are instead are focused on providing smaller informal training and learning opportunities for volunteers.

Park Planning and Development

Planning and Design Section:

- **Shelbourne Street of Unfinished Dreams (Memorial Avenue)**

The gateway post was installed at the corner of Shelbourne Street and Cedar Hill Road in October. In the spring the sign will be finalized with a finish so the letters contrast more with the sandstone (process requires warm, dry weather).



- **Lochside Park & Fowler Park Renewal Project**

The Park Renewal Project will focus on the deteriorating tennis courts, aging playground and lack of washroom facilities. The sports fields are not part of this project as they are well established anchor facilities for the community in this location.

The public engagement process started this month with an invitation to complete an online survey about how visitors use the park and what they would like to see in the park. The survey closes December 1st with the results of the survey informing the development of concept plans that will later be brought back to the community for further input. This is the process we have used in recent years with Park Renewal Projects like Horner Park, Tolmie Park, Rainbow Park and McMinn Park.

Parks is also hosting a session with the WŚÁNEĆ community on November 17 to discuss the park system and how we might make parks more welcoming to everyone in our community.

- **Tripp Station Youth Park**

While the construction of the project has been delayed for various reasons, the contractor is planning to get started soon. Construction will take 8-12 weeks depending on the weather.

- **Allenby Playground and Sportcourt Replacement**

The playground equipment for Allenby Park has been delayed due to global supply chain delays and will not arrive until 2022. Construction for this project will now begin in the spring once the wet park conditions improve. This will allow for the shortest time period of closing the playground and sportcourt during construction. Project improvements include a new natural playground with an accessible hillside slide, new and widened looping asphalt pathways, new park furniture, tree planting, improved drainage and an upgraded sportcourt with basketball and hockey nets at both ends.

Construction Section:

- Hampton Park: plaza has been poured and finished,
- Gorge Park parking lot: construction is in progress, estimated time of completion is three weeks, weather and paving schedule permitting.
- Quicks Bottom Park: parking area and trail is 80% complete; however, unfortunately wet weather has forced us to pull out for the season. Landscaping will be completed in warmer weather next year.
- Playground inspections and maintenance are ongoing as well as graffiti removal.
- Trail maintenance and repairs are being done as well bridge inspections.

Park Operations

Maintenance Section:

The section has been busy on many fronts. We are eagerly awaiting the arrival of our 2nd refuse truck as we have taken 123,610Kgs (273,000lbs) of refuse to the landfill as of the end of September. Washrooms continue to be busy, but changing some of our closure times has reduced vandalism, which has been high in specific places. We are currently at the start of our leafing program which typically runs four to six weeks. Parking lot maintenance and catch basin servicing have taken the forefront recently due to our wet weather. Irrigation is busy doing our seasonal shutdowns and blowouts.

Horticulture Section:

Garden display bed switch over is in fullswing, removing the annuals and replacing them with bulbs and winter annuals. Mulching of the beds is happening as they are converted. Cul de sac garden maintenance has begun and will continue through the winter months. Horticulture is involved with two projects supporting other agencies. One at Cedar Hill Golf Course involving the renovation of a garden bed to mark the 100th anniversary and another helping with the centrepieces and floral displays for the long service awards banquet.

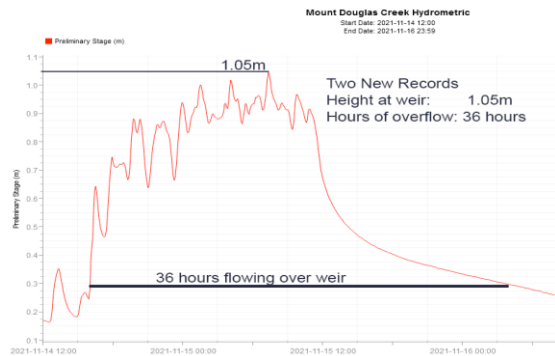
Urban Forestry Section:

Fall arrived with a bang, and our UF section has been inundated with tree calls. This is coming on the heels of one of our busiest call year in recent history. The UF team has had to prioritize calls, and move all hazard tree work to the top of the pile.

Our park tree planting program started up the last week of October. The crew is off to a good start, planting 66 Native trees at Cedar Hill Golf Course and planting an additional 30 ornamental trees at Fairburn and Hampton Parks. Planting will continue in parks (weather permitting) until the end of the year. Supervisory staff continue to review Engineering drawings for tree impacts, and provide onsite arborist supervision for Public Works projects. Telus Fibre Optic and Fortis gas calls continue to come in on a regular basis, requiring review of their service alignments for tree impacts.

Natural Areas Section:

The grand opening of the Douglas Creek bridge had a wonderful backdrop after Natural Areas crew planted over 500 native trees, shrubs and herbaceous plants including, Western-red Cedars, Big-leaf Maples, Red Huckleberry, Sword fern Nootka Rose, Salmonberry, Salal, Ocean Spray, and June berry. Several dozen of the potted Cedar trees from the Fanny Bay Salmonid Enhancement Society were also planted to support the Climate Action plan tree planting program. Several more hundred native plants and trees are scheduled to be planted along the new trail heading towards Douglas trail; Saanich Parks will be giving community and youth groups opportunities to help with the planting to engage in stewardship and inspire Natural Intelligence.



The record rain fall seen over the past few days, set two records at the Douglas Creek weir: 36 hours of continuous flow over the top of the weir and a record water height of 1.03m at the weir.

The Colquitz River flooding was a powerful act of nature to watch unfold as the rain continued to fall with the rise of high tide. The new Trembling Aspen restoration and creek enhancement projects were planted with ~200 Trembling Aspen trees and over 2500 native herbaceous plants. These plants and trees should hold up with this extended flooding. The water flow was so powerful that several of the habitat logs were moved about



50m down from their

original resting place. The timing will be tricky but crews will try to float them back in place when the overflow subsides but the high tide is still in play. Whether they get moved or not will not impact the long-term project goals as much more large woody debris will be placed throughout the project over the next few years. We are just glad that they were not swept out to sea. Returning Coho Salmon have been spotted at various locations along the Colquitz



River, including the Marigold bridge crossing close to Hyacinth Park.

Haro Woods saw lots of activity over the past couple of months with the enhancement of Finnerty Creek. The entire ~200m section of the creek, that runs through Saanich owned land, has been rebuilt, dug-out, re-directed, reinforced and three new bridges now span the creek as it winds its way towards Arbutus Road. New spawning gravel and boulders were added in-stream, silt traps were built, logs were placed, waterfalls were created and the planting of hundreds of native trees, shrubs and herbaceous plants has begun. The creek now looks, sounds and functions like a healthy creek should.



Natural Areas continues to support the Pulling Together (PT) Volunteer program with pile pick-ups, mulch drop-off, and weekly work party support for PT and school groups. We have received over two dozen PT plant requests so far and will be filling and delivering them over the next month or so. The integrated pest management (IPM) program has slowed significantly with staffing shuffles to support other sections but should get going soon with a big list of Holly and Hawthorn sites to treat. We will be doing a brief presentation at the next regional invasives (CRISP) zoom meeting and we are hoping to do a field presentation on the Holly/Hawthorn treatment program soon for other municipalities.



The Corporation of the District of Saanich

Report

To: Healthy Saanich Advisory Committee
From: Cristina Caravaca, Senior Manager- Community Services Division
Date: November 3, 2021
Subject: Community Services Division Update

RECOMMENDATION

That the Committee receive this report as information.

PURPOSE

The purpose of this report is to provide the Committee with an overview of Community Services division activities.

DISCUSSION

Older Adult Services: Older Adults Services is pleased to resume our caregiver support and neurodiversity inclusion program for Older Adults at Saanich Commonwealth Place! The “Older Adult Neurodiversity Social and Movement Class”, is supported by an Island Health Community Wellness Grant. Meeting weekly for ten weeks, for two hours on Wednesday afternoons, this program has been able to re start after a pandemic pause. This class is valued in the community, as it provides self-care time for caregivers at the same time as providing Older Adults with diverse neurology, from dementia, Parkinson’s or Alzheimer’s, opportunities to socialize, exercise and engage with peers in a fun, supportive and inclusive way. Having this program at our recreation centres means that those persons who receive a diagnosis may not have to leave the supportive recreation centre environment they have been a part of over their lifetime, that they can continue coming to their centre and still find programs that are well suited to their community health. This program is currently running October to December and is anticipated to run in the winter/spring session from January to March and April to June. We are excited to welcome participants in, celebrating neurodiversity and the importance of everyone having access to recreation and wellness in our Community Recreation Centres!

“Inspired by Nature: Forest Bathing and Creative Expression”, was a successful four week pilot program between Saanich Parks, Community Services, Swan Lake Nature Sanctuary and Human Nature Counselling. Free to participants and held completely outdoors, each Tuesday morning throughout September, ten Older Adult participants gathered with the Human Nature Counselling team an outdoor therapist, an art therapist (practicum student) and a counselling volunteer, as well as Saanich’s Older Adult and Community Art staff members. Meeting the first two weeks at Swan Lake and the last two weeks at P’kols (Mt. Doug) participants spent time in nature in a mindful way, using their senses to relax and inspire creativity. Each day consisted of gratitude sharing, guided “forest bathing” walks and creative activities. Regardless of skill or experience participants were able to enjoy mindfulness, natural intelligence and a sense of community. In addition they were able to explore wilderness outlines, nature made paint brushes and ink, outdoor rubbings and building natural mandalas. Both Community Service’s Art and Older Adult Programmers thoroughly enjoyed co-creating and supporting this pilot program targeted to Older Adults. Both were touched as participants shared the many ways in which this type of a program was enjoyed, valued and inspiring to all involved.

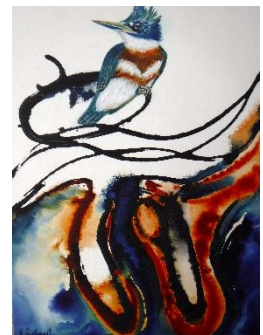


Community Arts: Artist Rain Cabana-Boucher's Artist-in-Community Residency Project *Laying Flowers* is based in community healing as a response to residential school findings. The project runs at the Cedar Hill Gallery and the Victoria Native Friendship Centre (VNFC) through November 14. Weekly beading sessions for Indigenous community members at the VNFC, where the artist and participants are beading daisies for each of the gravesite discoveries as they are revealed and adding them to the gallery at Cedar Hill. She will also be beading at Cedar Hill for visitors to witness and connect with her and the project. While the beading portion is reserved for Indigenous communities, the artist is also facilitating a collaborative painted mural panel that is open to all. More information at www.saanich.ca/layingflowers



Exhibitions: Richard Charter's *Music of Happenings*, Karen Guibault's *On the Wing*, and Saanich Archives' Remembrance Day exhibit, *Spotlight on Service* run October 28 through December 7.

The Witness Blanket Travelling Exhibition, a true-to-scale reproduction of the original art installation created by local artist and master carver Carey Newman will run at Cedar Hill Main Gallery from November 16 to December 12, 2021.



Financial Assistance: The LIFE financial assistance program continues to demonstrate its effectiveness for individuals and families in Saanich facing financial barriers to recreation. As restrictions continue to allow more participants in our recreation facilities and vaccination guidelines provide an increase sense of security for people, we are seeing more people on LIFE access our centres. 1700+ Saanich participants are now on the LIFE program for 2021. Although this is a decrease from "pre-COVID" years where we would typically issue 3500-3800 LIFE passes, we are seeing an upward trend in the return of our LIFE participants. Since August 3rd, when Saanich

Recreation re-instated the annual pass, 40 additional annual passes were sold at 50% off the regular cost to Saanich LIFE participants. The 7 Greater Victoria Recreation Departments are currently reviewing the LIFE program in preparation for the November 15th kick off to 2022 LIFE registration. With the success of our recent Canadian Tire Jumpstart Grant, the Tillicum After School Saanich Jumpstart Physical Literacy program began on September 20th with great uptake. With the expansion of the program including space at Pearkes Recreation Centre on Monday afternoons, we are keeping 25 school age children 6-11 years active on Mondays, Wednesdays and Fridays from 2:45-4:45pm. We are grateful for the support of funding organizations such as the Canadian Tire Jumpstart program who has managed to continue to support children living in homes where finances have been a barrier throughout the pandemic.

Child and Youth Services: With fall programs underway, the Youth Services Team have successfully offered a variety of drop in and registered programs to youth ages 11 years and up. The fall has also seen some exciting partnerships as we have been welcomed back into schools, and will be offering programs at ROMS and working on a cooking program with SIDES, ICA and Saanich Neighbourhood Place. We have continued our incredible partnership with Aquatics though a few staff shortages in the pool have made some of our offerings a little more challenging. However with our incredible Saanich staff both in Youth Services and in the pool we have worked hard to adjust and help find solutions where ever possible.

Although the Flipside Youth Centre at Pearkes continues to be occupied by the Fire Department. We have had some success with our Girls & Guys programming, and our Outdoor Adventure Club is running strong. We are fortunate to have such a wonderful group of committed staff in Youth Services. They are eager to try new things and are interested in engaging all youth that come into our Centre's or programs.



Saanich Remembrance Day Ceremony

The global pandemic continues to impact the hosting of Remembrance Day Ceremonies across Canada and once again the Saanich event will be scaled back in size. Spectators will be discouraged from attending in person, due to the limited space around the cenotaph and the requirement to physically distance. A live feed will be streamed on the Saanich Facebook page so that residents will be able to view the event.

The film industry was quiet for a couple months but three new productions started up in the month of October. A **NETFLIX** series called Air Bud is filming in various CRD locations as well as some smaller productions such as Handmade Ivy and an Ayasew Ooksana Production called "Bone of Crows". "Maid" is still available to stream and features several recognizable locations in the Greater Saanich area.