

Recommended Nursery Stock

Trees	Botanical Name	Common Name	Size
21	Acer rubrum 'Karpick'	Karpick Maple	6cm cal.
	Carpinus betulus 'Frans Fontaine'	Columnar Hornbeam	6cm cal.
	Magnolia grandiflora 'Victoria'	Victoria Magnolia	6cm cal.
	Pyrus calleryana 'Chanticleer'	Ornamental Pear	6cm cal.
Large Shrubs	Botanical Name	Common Name	Size
59	Ceanothus thyrsiflorus 'Victoria'	Victoria Ceanothus (California Lilac)	#5 pot
	Cornus stolonifera	Redtwig Dogwood	#5 pot
Medium Shrubs	Botanical Name	Common Name	Size
36	Rhododendron 'Boule de Neige'	Boule de Neige Rhododendron	#5 pot
	Rhododendron 'Ramapo'	Ramapo Rhododendron	#3 pot
	Rosmarinus officinalis	Rosemary	#3 pot
	Vaccinium x 'Northsky' (half high)	Northsky Blueberry	#3 pot
Small Shrubs	Botanical Name	Common Name	Size
382	Cornus stolonifera 'Kelsey'	Kelsey Dogwood	#1 pot
	Lavandula angustifolia 'Munstead'	Munstead English Lavender	#1 pot
	Lavandula stoechas 'Otto Quast'	Spanish Lavender	#1 pot
	Mahonia nervosa	Low Oregon Grape	#1 pot
	Perovskia atriplicifolia	Russian Sage	#1 pot
	Pieris japonica 'Pretudo'	Pretudo Pieris	#1 pot

Groundcovers

Botanical Name	Common Name	Size
Erica carnea 'December Red'	December Red Heather	#1 pot
Mahonia repens	Creeping Oregon Grape	#1 pot

Perennials, Annuals and Ferns

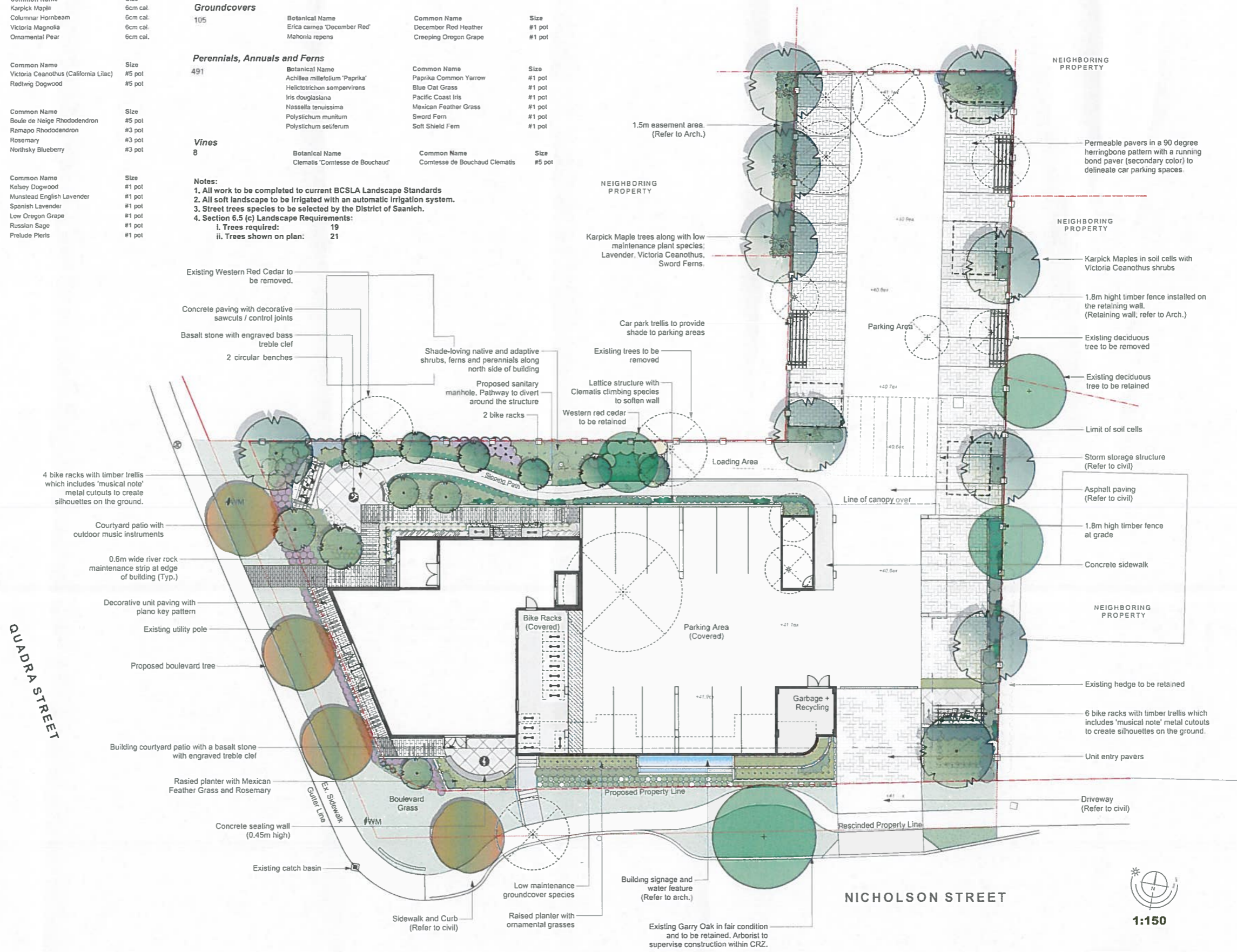
Botanical Name	Common Name	Size
Achillea millefolium 'Paprika'	Paprika Common Yarrow	#1 pot
Helictotrichon sempervirens	Blue Oat Grass	#1 pot
Iris douglasiana	Pacific Coast Iris	#1 pot
Nassella tenuissima	Mexican Feather Grass	#1 pot
Polystichum munitum	Sword Fern	#1 pot
Polystichum setiferum	Soft Shield Fern	#1 pot

Vines

Botanical Name	Common Name	Size
Clematis 'Comtesse de Bouchaud'	Comtesse de Bouchaud Clematis	#5 pot

Notes:

- All work to be completed to current BCSLA Landscape Standards
- All soft landscape to be irrigated with an automatic irrigation system.
- Street trees species to be selected by the District of Saanich.
- Section 6.5 (c) Landscape Requirements:
 - Trees required: 19
 - Trees shown on plan: 21



Harmony House - Landscape Concept Plan

1:150

RECEIVED
 NOV 20 2019
 LADR LANDSCAPE ARCHITECTS
 PROJECT NO. 1909 OCTOBER-17-19
 #3-864 Queens Ave. Victoria, BC V8M 1M5
 Phone: (250) 598-0105
 DISTRICT OF SAANICH




Inventory of Existing Trees¹

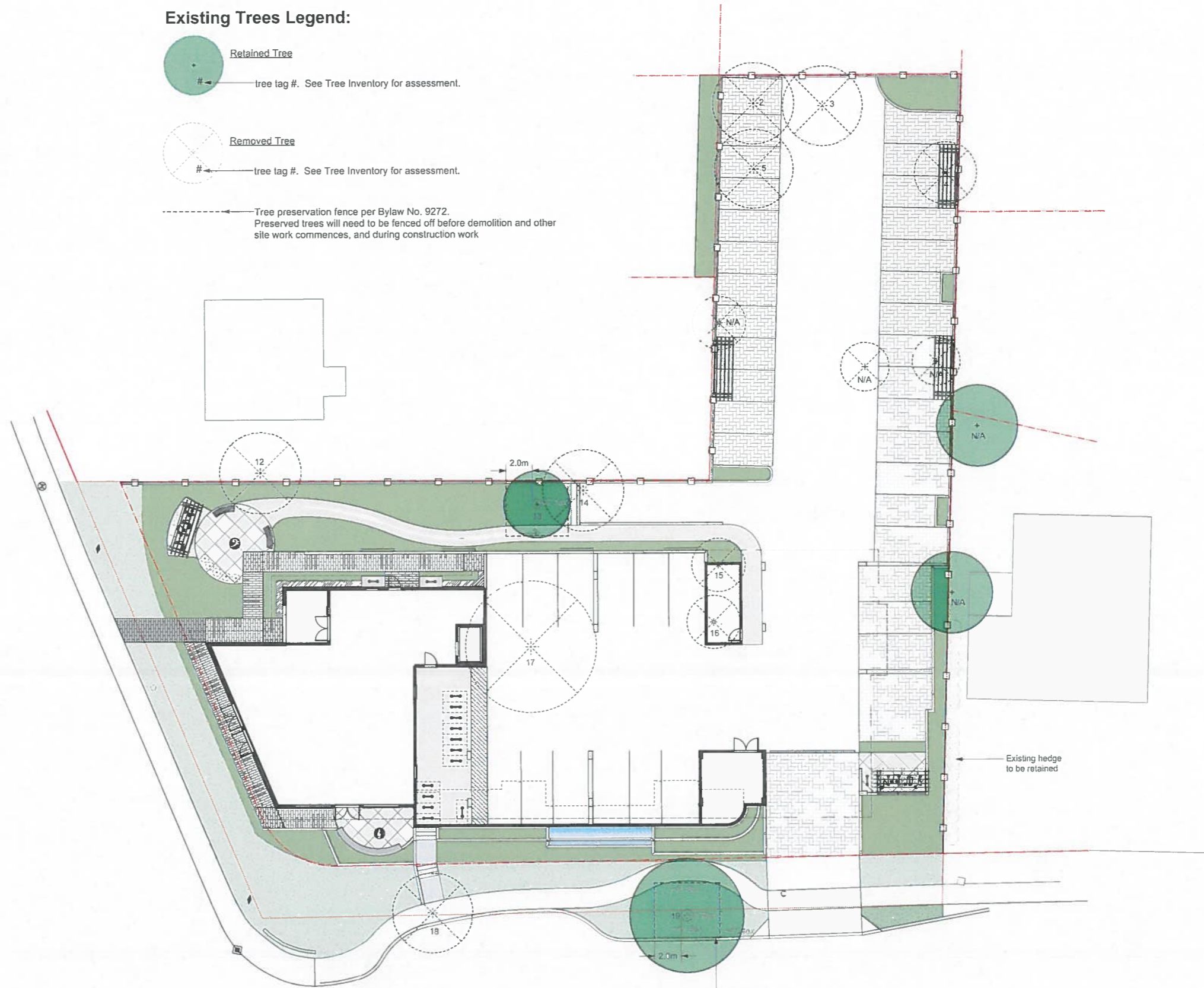
Table 1 lists the trees shown in Figure 1 and also shows which trees would be removed to accommodate the proposed development

Tree #	Species	Trunk diameter (cm)	Bylaw sized? Y or N	Condition	Retain Y or N
1	Hawthorn	32-15-15	N	Three stems. Fair condition	Y
2	Apple	34	N	Good condition	N
3	Apple	33	N	Good condition	N
4	Douglas-fir	26	N	Good condition	N
5	Apple	33	N	Good condition	N
6	Douglas-fir	22	N	Good condition	Y
7	White Pine	34	N	Good condition	Y
8	Western redcedar	29	N	Good condition	Y
9	Holly	15-15	N	Good condition	Y
10	Ornamental cherry	38	N	Poor condition	Y
11	Larch	44	N	Poor condition almost dead	Y
12	Western redcedar	83	Y	Good condition	N
13	Western redcedar	70	Y	Good condition	Y
14	Pine	60	Y	Good condition	N
15	Horse chestnut	27	N	Fair condition	N
16	Horse chestnut	29	N	Fair condition	N
17	Western redcedar	50 - 59	Y	Good condition. Two stems joined at base	N
18	Lawson cypress	52	N	Good condition	N
19	Garry Oak	90	Y	Fair condition. crown sparse and thinning out	Y

¹Inventory of Existing Tree from the Tree Management Report for 944 Nicholson Street and 4093 to 4067 Quadra Street, Saanich BC, prepared by Dunster & Associates Environmental Consultants Ltd., dated October 9, 2019.

Existing Trees Legend:

-  **Retained Tree**
→ tree tag #. See Tree Inventory for assessment.
-  **Removed Tree**
→ tree tag #. See Tree Inventory for assessment.
-  **Tree preservation fence per Bylaw No. 9272.**
Preserved trees will need to be fenced off before demolition and other site work commences, and during construction work



#19 Garry Oak Notes:

1. On site excavation of ground to locate critical roots using an Air spade (not hydrovac). There can be no lowering of the existing grades.
2. Install biaxial geogrid on top of existing soil, cover with minimum 10 centimetres coarse aggregate lightly rolled / packed and then install concrete on top of that.
3. Concrete to be 10 cm slab reinforced with rebar and slab divisions to be at drop line with once continuous slab in middle.



Harmony House - Tree Preservation Plan



LADR LANDSCAPE ARCHITECTS
PLANNING DEPT.
DISTRICT OF SAANICH

Project No: 1909 October-17-19

#3-864 Queens Ave. Victoria B.C. V8T 1M5
Phone: (250) 598-0105

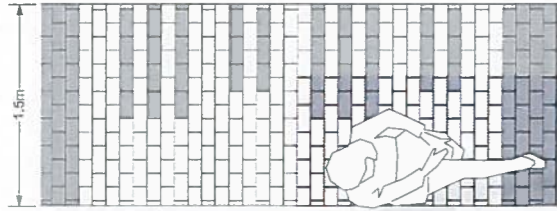




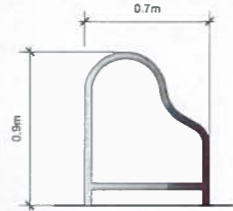
Low maintenance plant palette



Ornamental grasses



Piano inspired paving



Bike rack



Outdoor musical instruments



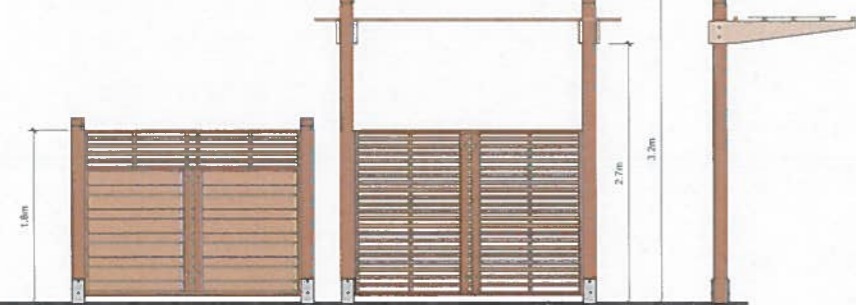
Benches



Courtyard table and seating



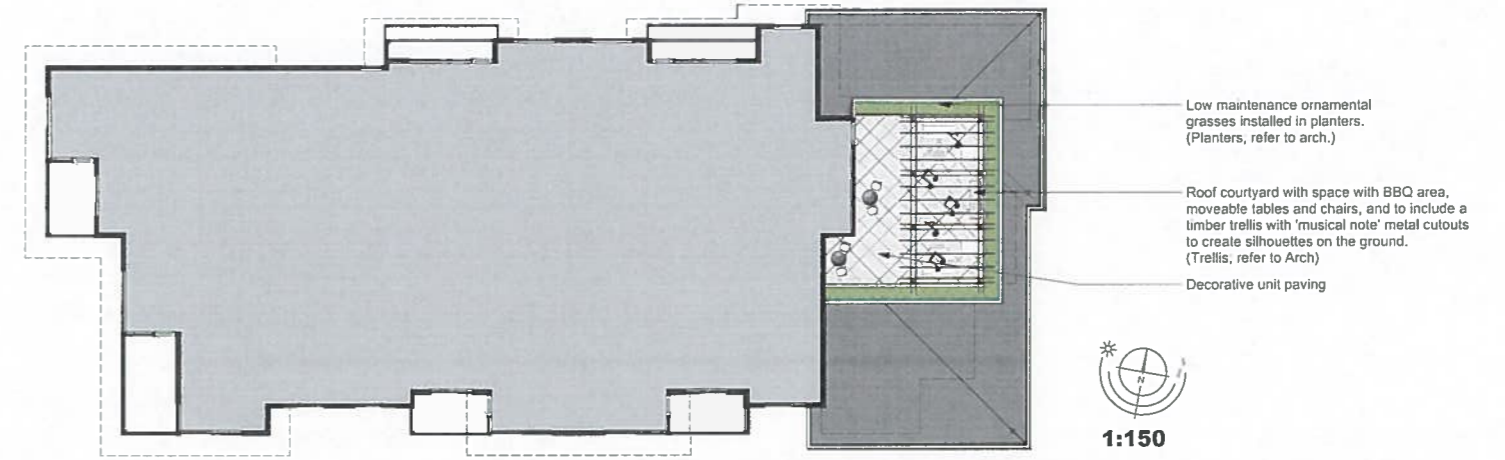
Timber trellis with 'musical note' metal cutouts



Timber privacy fence

Timber trellis with 'musical note' metal cutouts

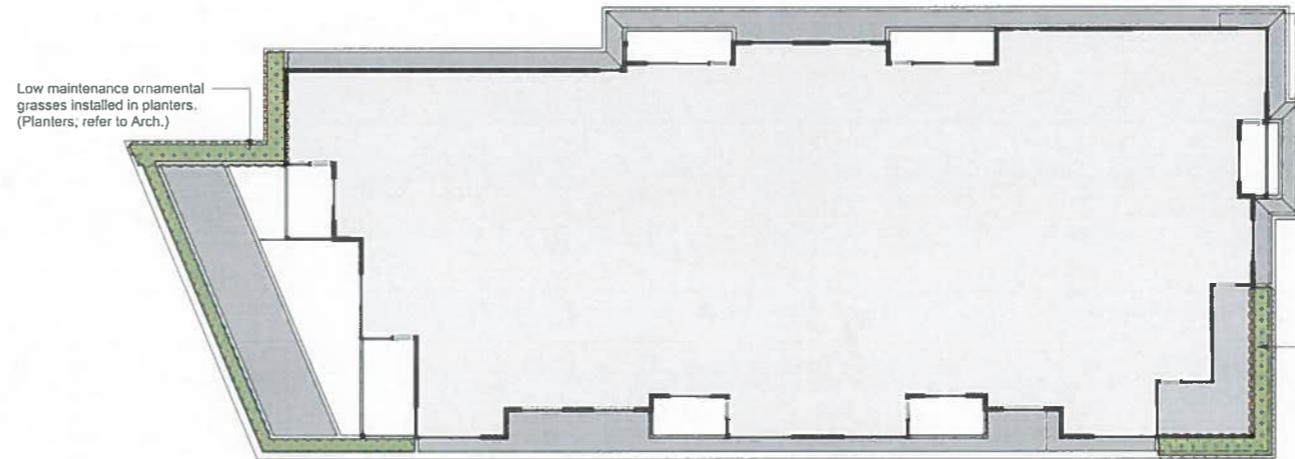
PRECEDENT IMAGES



- Low maintenance ornamental grasses installed in planters. (Planters, refer to Arch.)
- Roof courtyard with space with BBQ area, moveable tables and chairs, and to include a timber trellis with 'musical note' metal cutouts to create silhouettes on the ground. (Trellis, refer to Arch)
- Decorative unit paving



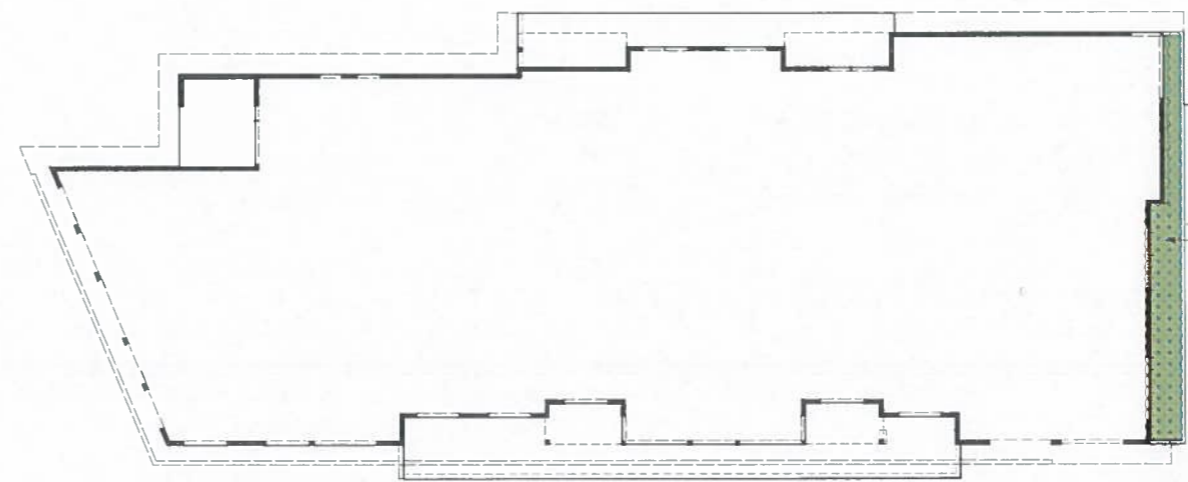
4th FLOOR



- Low maintenance ornamental grasses installed in planters. (Planters, refer to Arch.)



2nd FLOOR



- Low maintenance ornamental grasses installed in planters. (Planters, refer to Arch.)



MAIN FLOOR

Harmony House - Landscape Concept Plan



LADR LANDSCAPE ARCHITECTS

Project No: 1909 October-17-19

#3-864 Coopers Ave. Victoria, BC V8T 1M5
Phone: (250) 598-0105

