

Material Legend

Provide samples of all exterior colours & materials for review & approval

- 1 **Roofing**
Flat IKO 2-Ply SBS Roofing, Light Gray
- 2 **Fascia: Light**
Dark Coloured Fibre Cement
B.M. DC-59 Vanilla Milkshake
- 3 **Fascia: Dark**
Dark Coloured Fibre Cement
B.M. Kendall Charcoal HC-166
- 4 **Soffit: Feature Wood**
Wood-like Fibre Cement Board
6" Exposure, Woodtone Summer Wheat
Colour matched fasteners
- 5 **Soffit: Typical**
Light Coloured Fibre Cement Panel
B.M. DC-59 - Vanilla Milkshake
- 6 **Panels: Feature**
Fibre Cement Panels
6" Exposure, Summer
Wheat Colour matched or concealed fasteners
- 7 **Panels: Light**
Fibre Cement Panels
B.M. OC-59 - Vanilla Milkshake
Concealed Fasteners
- 8 **Panels: Dark**
Fibre Cement Panels
B.M. Kendall Charcoal HC-166
Concealed Fasteners
- 9 **Siding Horizontal - Off White**
Off White Coloured Fibre Cement
Aspyre-like V-Grove Siding
Concealed Fasteners
- 10 **Windows: Vinyl Light**
High Performance Low-e Coated
Light Coloured Frame - White Vinyl
- 11 **Windows: Vinyl Dark**
High Performance Low-e Coated
Dark Coloured Frame - Charcoal Vinyl
- 12 **Windows: Curtain Wall**
High Performance Low-e Coated
Dark Coloured Frame - Match Charcoal Vinyl
- 13 **Metal Flashing: Feature**
Custom Bent Heavy Gauge Flashing
Light Gray Coloured Cascadia Metals
- 14 **Metal Trims: Light**
Light Coloured - Cascadia Metals Polar White
- 15 **Metal Trims: Dark**
Dark Coloured - Cascadia Metals Iron Ore
- 16 **Glazing: Privacy Screens & Guards**
Guards: Lightly tinted safety glass
Privacy Screens: Opaque safety glass
- 17 **STO Brick Veneer: Dark**
STO Brick Veneer
Normal 2.25" Half Round B. 166
- 18 **STO Harder Brick Veneer: Dark**
STO Harder Brick Veneer
8" x 16" Square Corner
- 19 **Architectural Concrete**
Exposed Concrete or Elastomeric Paint
B.M. Pigeon Gray 2133-50
- 20 **Heavy Timbers**
Stain to match Woodtone Soffit
- 21 **Aluminum Screen**
Knotwood System Wood-Like Colour
to Match Woodstone Soffit



ARCHITECTS INCORPORATED
280-970 Hamer St Vancouver BC V6C 2K7

Copyright. All rights reserved. Reproduction in whole or in part is prohibited. This drawing is the property of the architect and may not be used in any way without the permission of the architect. Dimensions have precedence over scaled ones. Contractors shall verify and be responsible for dimensions and conditions on the job. As well as be informed of any discrepancy or variance from the dimensions and conditions on the job.

Revisions
Client Review
January 26th, 2022
DP Submission
February 10th, 2022

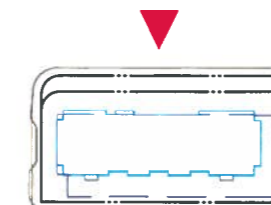
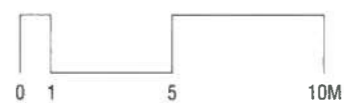


Client
ABSTRACT
developments

Project
801 McKenzie
801 McKenzie Ave,
811 McKenzie Ave and
821 McKenzie Ave
Victoria District, BC

- Lot 1, Section 49,
Victoria District, Plan 2041
- Lot 2 & 3, Section 46
Victoria District, Plan 1178

Scale 1:100
Elevations



RECEIVED Elevations **A-4.00**
FEB 17 2022
PLANNING DEPT.
DISTRICT OF SAANICH

Material Legend

Provide samples of all exterior colours & materials for review & approval

- 1 **Roofing**
Flat IKO 2-Ply SBS Roofing, Light Gray
- 2 **Fascia: Light**
Dark Coloured Fibre Cement
B.M. OC-59 Vanilla Milkshake
- 3 **Fascia: Dark**
Dark Coloured Fibre Cement
B.M. Kendall Charcoal HC-166
- 4 **Soffit: Feature Wood**
Wood-like Fibre Cement Board
6" Exposure, Woodtone Summer Wheat
Colour matched fasteners
- 5 **Soffit: Typical**
Light Coloured Fibre Cement Panel
B.M. OC 59 - Vanilla Milkshake
- 6 **Panel: Feature**
Fibre Cement Panels
6" Exposure, Summer
Wheat Colour matched or concealed fasteners
- 7 **Panel: Light**
Fibre Cement Panels
B.M. OC 59 - Vanilla Milkshake
Concealed Fasteners
- 8 **Panel: Dark**
Fibre Cement Panels
B.M. Kendall Charcoal HC-166
Concealed Fasteners
- 9 **Siding Horizontal - Off White**
Off White Coloured Fibre Cement
Aspyre-like V-Grove Siding
Concealed Fasteners
- 10 **Windows: Vinyl Light**
High Performance Low-e Coated
Light Coloured Frame - White Vinyl
- 11 **Windows: Vinyl Dark**
High Performance Low-e Coated
Dark Coloured Frame - Charcoal Vinyl
- 12 **Windows: Curtain Wall**
High Performance Low-e Coated
Dark Coloured Frame - Match Charcoal Vinyl
- 13 **Metal Flashing: Feature**
Custom Bent Heavy Gauge Flashing
Light Gray Coloured Cascadia Metals
- 14 **Metal Trims: Light**
Light Coloured - Cascadia Metals Polar White
- 15 **Metal Trims: Dark**
Dark Coloured - Cascadia Metals Iron Ore
- 16 **Glazing: Privacy Screens & Guards**
Guards Lightly frosted safety glass
Privacy Screens Opaque safety glass
- 17 **STO Brick Veiler: Dark**
3" Color System
"Cascadia" - Dark Charcoal
- 18 **STO Healdie: Brick Veiler: Dark**
3" Color System
"Cascadia" - Dark Charcoal
- 19 **Architectural Concrete**
Exposed Concrete or Elastomeric Paint
B.M. Pigeon Gray 2133-50
- 20 **Heavy Timbers**
Stain to match Woodtone Soffit
- 21 **Aluminum Screen**
Knotwood System Wood-Like Colour
to Match Woodstone Soffit



ARCHITECTS INCORPORATED
230-1770 Hemer St. Vancouver BC V6

Copyright: All rights reserved. Reproduction in whole or in part is prohibited. This drawing, instrument or service is the property of the architect and may not be used in any way without the permission of the architect. Dimensions shown have precedence over scaled dimensions. Contractors shall verify and be responsible for dimensions and conditions on the job. An owner shall be informed of any discrepancy in view from the dimensions and conditions on the job.

Revisions:
Client Review
January 28th, 2022
DP Submission
February 10th, 2022



ABSTRAC
developments

Project:
801 McKenzie
801 McKenzie Ave,
811 McKenzie Ave and
821 McKenzie Ave
Victoria District, BC

- Lot 1, Section 49,
Victoria District, Plan 2041
- Lot 2 & 3, Section 49
Victoria District, Plan 1178

Scale: 1:100
Elevations



Material Legend

Provide samples of all exterior colours & materials for review & approval

- 1 **Roofing**
Flat IKO 2-Ply SBS Roofing, Light Gray
- 2 **Fascia: Light**
Dark Coloured Fibre Cement
B M OC-59 Vanilla Milkshake
- 3 **Fascia: Dark**
Dark Coloured Fibre Cement
B M Kendall Charcoal HC-166
- 4 **Soffit: Feature Wood**
Wood-like Fibre Cement Board
6" Exposure, Woodtone Summer Wheat
Colour matched fasteners
- 5 **Soffit: Typical**
Light Coloured Fibre Cement Panel
B M OC 59 - Vanilla Milkshake
- 6 **Panel: Feature**
Fibre Cement Panels
6" Exposure, Summer
Wheat Colour matched or concealed fasteners
- 7 **Panel: Light**
Fibre Cement Panels
B M OC 59 - Vanilla Milkshake
Concealed Fasteners
- 8 **Panel: Dark**
Fibre Cement Panels
B M Kendall Charcoal HC-166
Concealed Fasteners
- 9 **Siding Horizontal - Off White**
Off White Coloured Fibre Cement
Aspyre-like V-Grove Siding
Concealed Fasteners
- 10 **Windows: Vinyl Light**
High Performance Low-e Coated
Light Coloured Frame - White Vinyl
- 11 **Windows: Vinyl Dark**
High Performance Low-e Coated
Dark Coloured Frame - Charcoal Vinyl
- 12 **Windows: Curtain Wall**
High Performance Low-e Coated
Dark Coloured Frame - Match Charcoal Vinyl
- 13 **Metal Flashing: Feature**
Custom Bent Heavy Gauge Flashing
Light Gray Coloured Cascadia Metals
- 14 **Metal Trims: Light**
Light Coloured - Cascadia Metals Polar White
- 15 **Metal Trims: Dark**
Dark Coloured - Cascadia Metals Iron Ore
- 16 **Glazing: Privacy Screens & Guards**
Guards Lightly frosted safety glass
Privacy Screens Opaque safety glass
- 17 **STO Brick Veneer: Dark**
STO Brick Veneer
Dark Coloured - Iron Ore
Nominal 8" x 16" x 8" (203mm x 406mm x 203mm)
- 18 **STO Header Brick Veneer: Dark**
STO Header Brick Veneer
Dark Coloured - Iron Ore
Nominal 8" x 16" x 8" (203mm x 406mm x 203mm)
- 19 **Architectural Concrete**
Exposed Concrete or Elastomeric Paint
B M Pigeon Gray 2133-50
- 20 **Heavy Timbers**
Stain to match Woodstone Soffit
- 21 **Aluminum Screen**
Knotwood System Wood-Like Colour
to Match Woodstone Soffit

ARCHITECTS INCORPORATED
285-975 Homer St. Vancouver BC V6Z 2M6

Copyright: All rights reserved. Reproduction in whole or in part is prohibited. This drawing is the property of the architect and may not be used in any way without the permission of the architect. Dimensions are approximate and subject to change. Contractors shall verify and be responsible for all dimensions and conditions on the job. An error shall be informed of any discrepancy or error from the dimensions and conditions on the job.



Neighboring lot

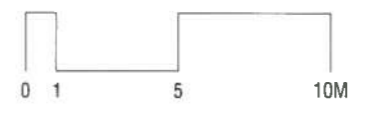
Revisions:
Client Review
January 26th, 2022
DP Submission
February 10th, 2022

ABSTRAC
developments

Project:
801 McKenzie
801 McKenzie Ave,
811 McKenzie Ave and
821 McKenzie Ave
Victoria District, BC

- Lot 1, Section 49,
Victoria District, Plan 2041
- Lot 2 & 3, Section 49
Victoria District, Plan 1178

SOUTH ELEVATION



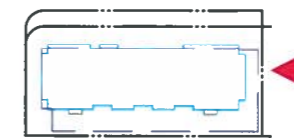
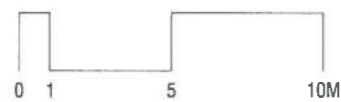
RECEIVED Elevations A-4.01
FEB 17 2022
PLANNING DEPT.

Scale: 1/100
Elevations

Material Legend

Provide samples of all exterior colours & materials for review & approval

- 1 **Roofing**
Flat IKO 2-Ply SBS Roofing, Light Gray
- 2 **Fascia: Light**
Dark Coloured Fibre Cement
B.M. OC-59 Vanilla Milkshake
- 3 **Fascia: Dark**
Dark Coloured Fibre Cement
B.M. Kendall Charcoal HC-166
- 4 **Soffit: Feature Wood**
Wood-like Fibre Cement Board
6" Exposure, Woodtone Summer Wheat
Colour matched fasteners
- 5 **Soffit: Typical**
Light Coloured Fibre Cement Panel
B.M. OC 59 - Vanilla Milkshake
- 6 **Panels: Feature**
Fibre Cement Panels
6" Exposure, Summer
Wheat Colour matched or concealed fasteners
- 7 **Panels: Light**
Fibre Cement Panels
B.M. OC 59 - Vanilla Milkshake
Concealed Fasteners
- 8 **Panels: Dark**
Fibre Cement Panels
B.M. Kendall Charcoal HC-166
Concealed Fasteners
- 9 **Siding Horizontal - Off White**
Off White Coloured Fibre Cement
Aspyre-like V-Groove Siding
Concealed Fasteners
- 10 **Windows: Vinyl Light**
High Performance Low-e Coated
Light Coloured Frame - White Vinyl
- 11 **Windows: Vinyl Dark**
High Performance Low-e Coated
Dark Coloured Frame - Charcoal Vinyl
- 12 **Windows: Curtain Wall**
High Performance Low-e Coated
Dark Coloured Frame - Match Charcoal Vinyl
- 13 **Metal Flashing: Feature**
Custom Bent Heavy Gauge Flashing
Light Gray Coloured Cascadia Metals
- 14 **Metal Trims: Light**
Light Coloured - Cascadia Metals Polar White
- 15 **Metal Trims: Dark**
Dark Coloured - Cascadia Metals Iron Ore
- 16 **Glazing: Privacy Screens & Guards**
Guards: Lightly frosted safety glass
Privacy Screens: Opaque safety glass
- 17 **STO Brick Veneer: Dark**
STO Brick Veneer
Nominal Size: 4 1/2" x 8 1/2" x 3 1/2"
- 18 **STO Header Brick Veneer: Dark**
STO Header Brick Veneer
Nominal Size: 4 1/2" x 8 1/2" x 3 1/2"
- 19 **Architectural Concrete**
Exposed Concrete or Elastomeric Paint
B.M. Pigeon Gray 2133-50
- 20 **Heavy Timbers**
Stain to match Woodstone Soffit
- 21 **Aluminum Screen**
Knotwood System Wood-Like Colour
to Match Woodstone Soffit



ARCHITECTS INCORPORATED
250-970 Hemet St Vancouver BC V6Z 1K1

Copyright All rights reserved. Reproduction in whole or in part is prohibited. This drawing is the property of the architect and may not be used in any way without the permission of the architect. The architect shall not be responsible for any errors or omissions in this drawing. Contractors shall verify and be responsible for all dimensions and conditions on the job. All shall be informed of any discrepancy or error from the dimensions and conditions on the job.

Revisions
Client Review
January 28th, 2022

DP Submission
February 10th, 2022



ABSTRAC
developments

Project
801 McKenzie
801 McKenzie Ave,
811 McKenzie Ave and
821 McKenzie Ave
Victoria District, BC

- Lot 1, Section 49,
Victoria District, Plan 2041
- Lot 2 & 3, Section 45
Victoria District, Plan 1176

Scale: 1:100
Elevations

Elevations A-4.01

RECEIVED
FEB 17 2022
PLANNING DEPT