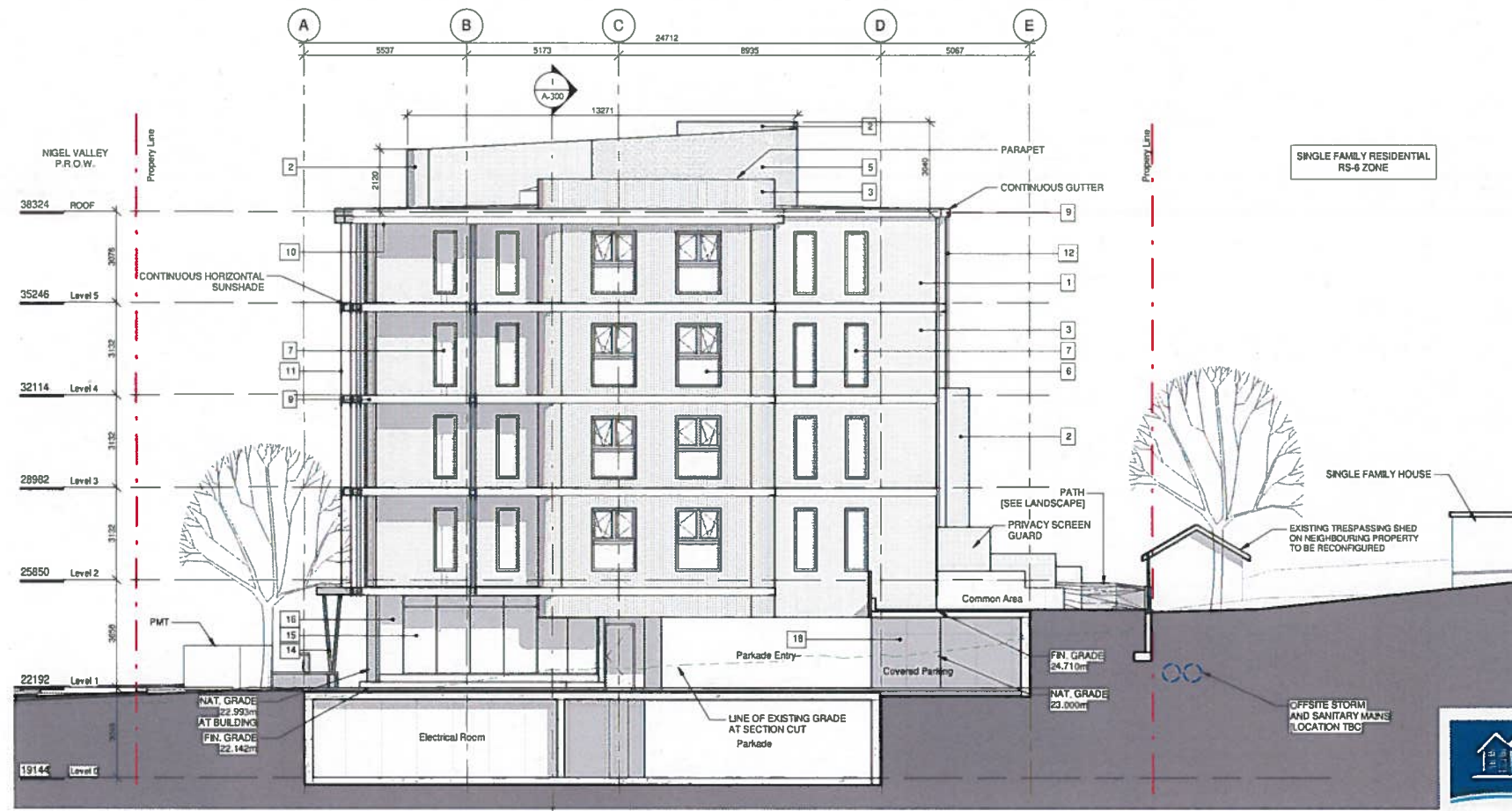


1 Building Elevation - North  
SCALE = 1 : 100



2 Building Elevation - East  
SCALE = 1 : 100

Cladding Materials Legend

Material #	Material Description
1	Colour 1 - Prefinished Corrugated Metal Cladding - Dark Grey
2	Colour 2 - Prefinished Corrugated Metal Cladding - Copper
3	Colour 3 - Prefinished Corrugated Metal Cladding - Light Grey
4	Colour 1 - Prefinished Corrugated + Perforated Metal Cladding - Dark Grey
5	Colour 2 - Prefinished Corrugated + Perforated Metal Cladding - Copper
6	Colour A - Vinyl Window System - Light Grey
7	Colour B - Vinyl Window System - Red
8	Prefinished Metal Flashing - Colour to Match Adjacent
9	Prefinished Metal Fascia
10	Wood Finish Soffit Material
11	Steel Rod Support Structure - Shop Primed and Field Coated
12	Colour 1 - Rain Water Leader - Dark Grey
13	SSS Membrane Roof - Light Colour
14	Painted Steel Canopy Columns
15	Glazed Window System - SSG Vertical Joints and Horizontal Mullions
16	Aluminum Break Shape Panels - Colour to Match SSG + Mullions
17	Masonry Tile - Large Format Panels
18	Exposed Concrete



NO.	DESCRIPTION	DATE
	Issued for CP Amendment	June 06, 2019

RECEIVED  
JUN 10 2019

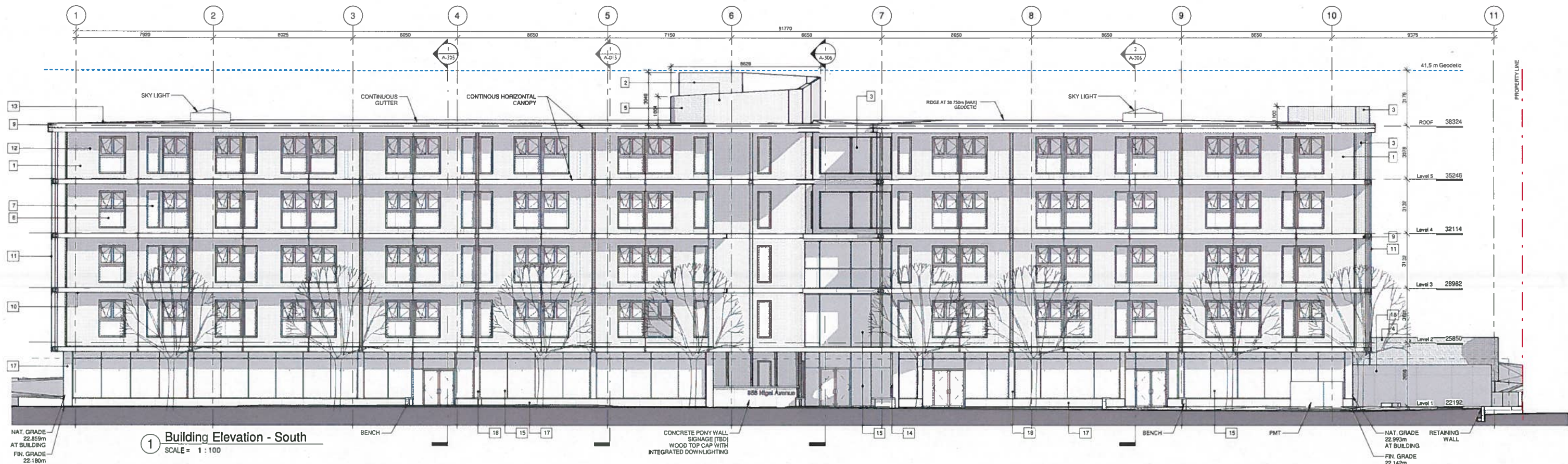
Project: **GVHS NIGEL VALLEY HOUSING**  
 Greater Victoria Housing Society  
 856 Nigel Avenue, Saanich, BC

Scale: As Indicated  
 Project #: 1715  
 Revision:

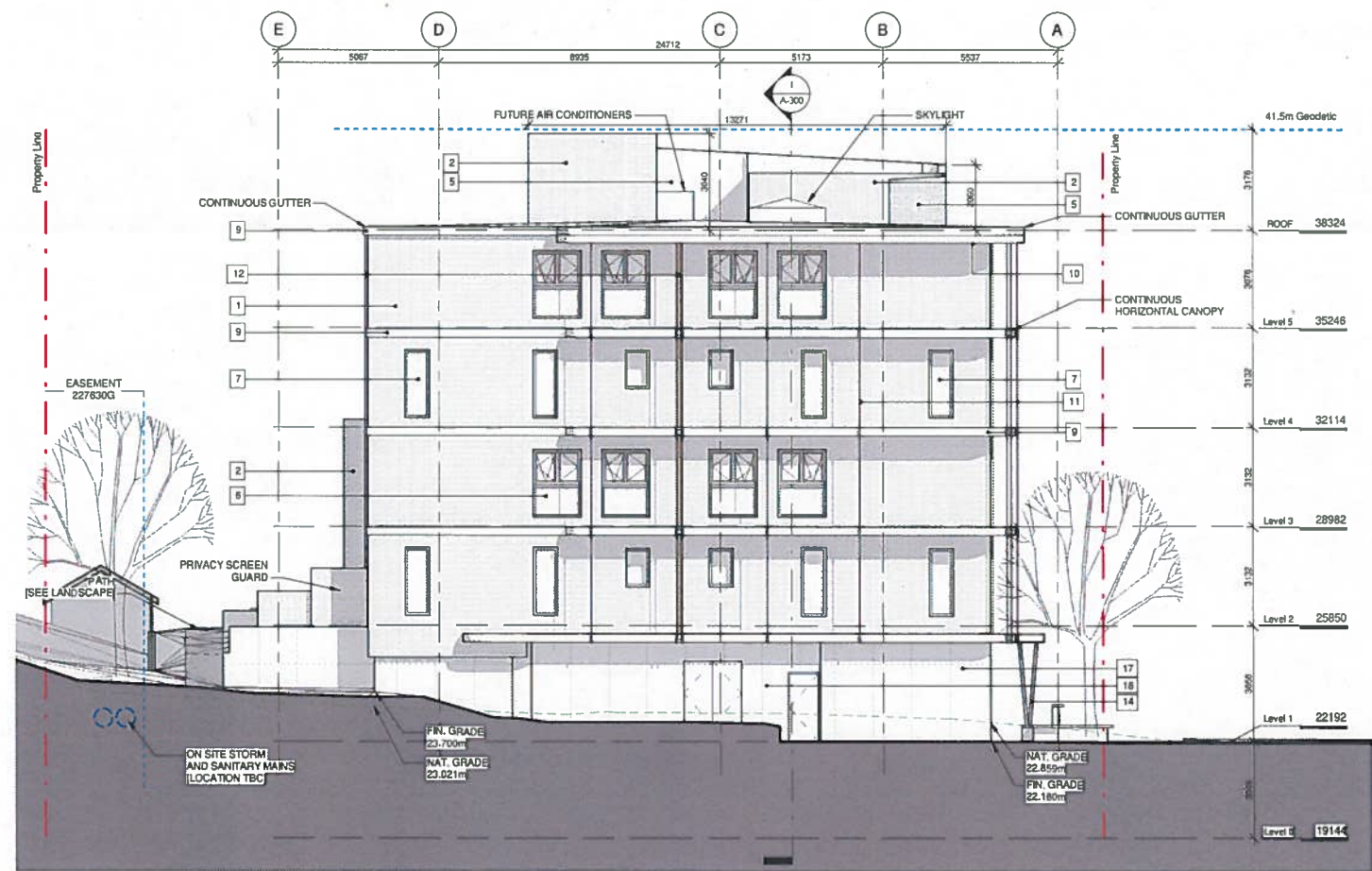
Sheet Name: **ELEVATIONS - Building Elevations**  
 Sheet #: **A-200**

2019-06-08 11:20:20 AM





1 Building Elevation - South  
SCALE = 1 : 100



2 Building Elevation - West  
SCALE = 1 : 100

Cladding Materials Legend

Material #	Material Description
1	Colour 1 - Prefinished Corrugated Metal Cladding - Dark Grey
2	Colour 2 - Prefinished Corrugated Metal Cladding - Copper
3	Colour 3 - Prefinished Corrugated Metal Cladding - Light Grey
4	Colour 1 - Prefinished Corrugated + Perforated Metal Cladding - Dark Grey
5	Colour 2 - Prefinished Corrugated + Perforated Metal Cladding - Copper
6	Colour A - Vinyl Window System - Light Grey
7	Colour B - Vinyl Window System - Field
8	Prefinished Metal Flashing - Colour to Match Adjacent Prefinished Metal Fascia
9	Prefinished Metal Fascia
10	Wood Finish Soft Material
11	Steel Roof Support Structure - Shop Primed and Field Coated
12	Colour 1 - Rain Water Leader - Dark Grey
13	SBS Membrane Roof - Light Colour
14	Painted Slant Canopy Columns
15	Glazed Window System - SSG Vertical Joints and Horizontal Mullions
16	Aluminium Break Shape Panels - Colour to Match SSG + Mullions
17	Masonry Tile - Large Format Panels
18	Exposed Concrete



NO.	DESCRIPTION	DATE
	Issued for DP Amendment	June 06, 2019

Project: **GVHS NIGEL VALLEY HOUSING**  
 Greater Victoria Housing Society  
 856 Nigel Avenue, Saanich, BC

Scale: As indicated  
 Project #: 1715

Sheet Name: **ELEVATIONS - Building Elevations**

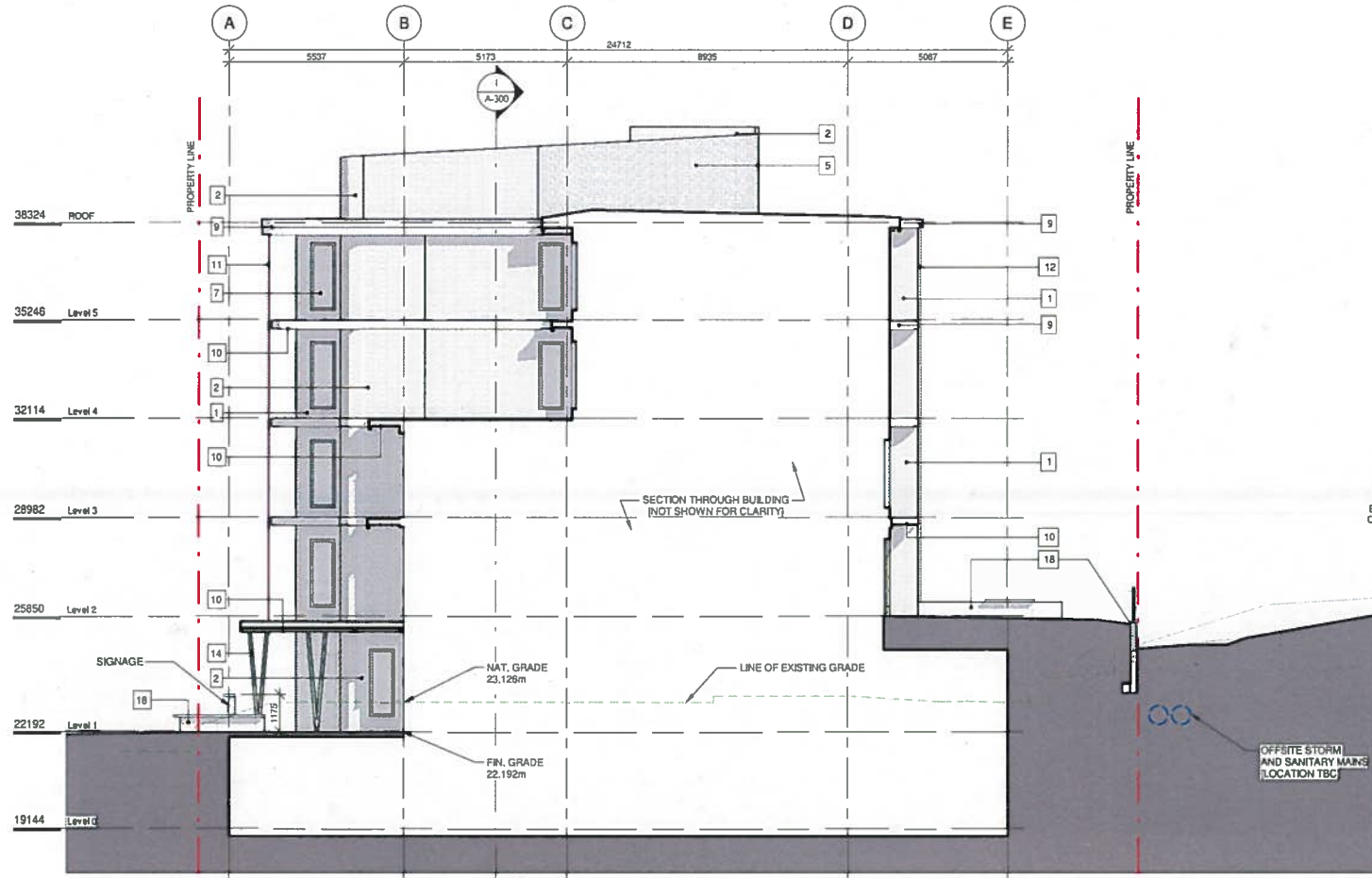
**RECEIVED**  
 JUN 10 2019  
 PLANNING DEPT.  
 DISTRICT OF SAANICH

Revision:

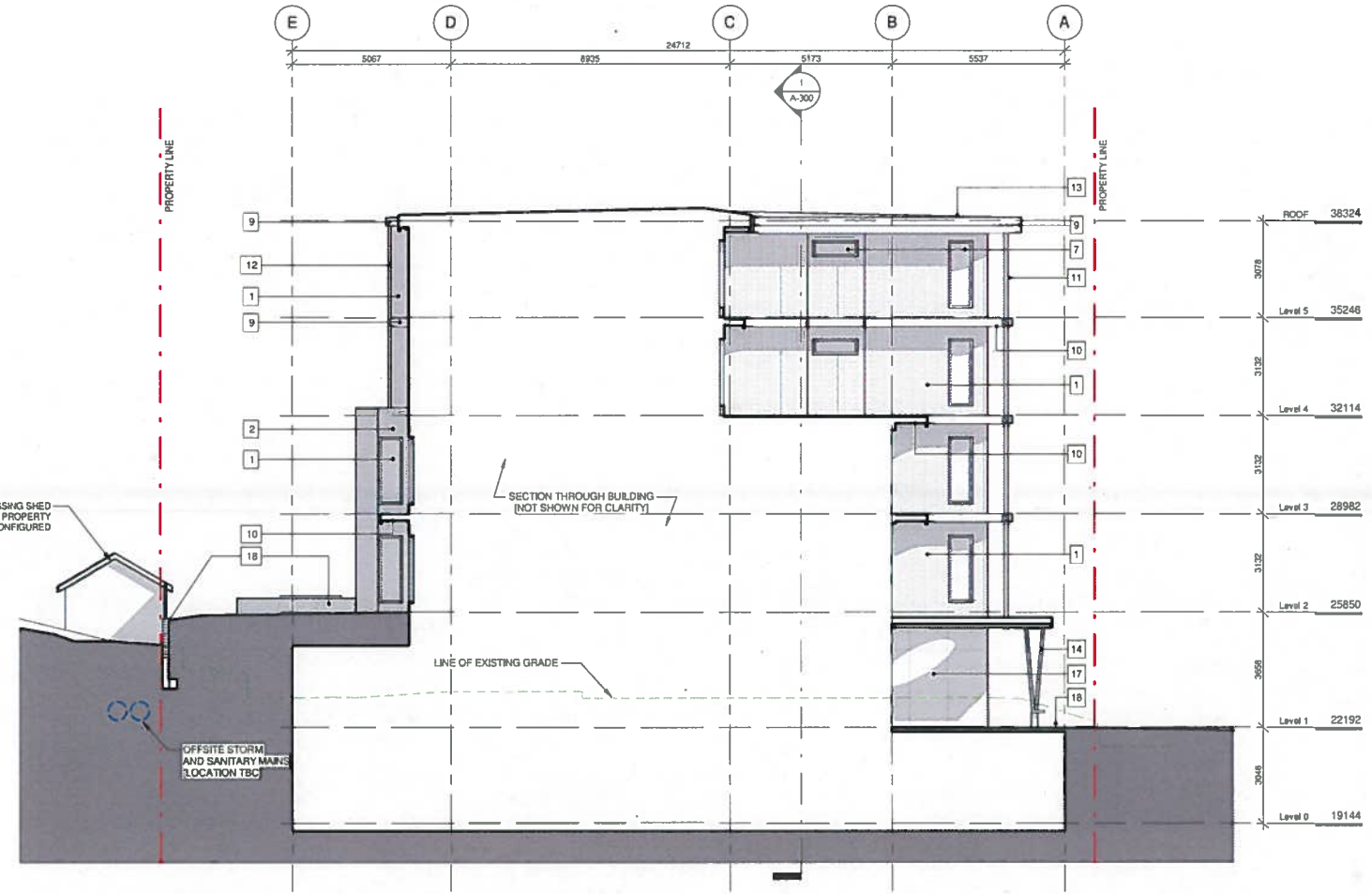
Sheet #: **A-201**

2019-06-08 11:20:32 AM





2 Partial Elevation - Centre East  
SCALE = 1 : 100



1 Partial Elevation - Centre West  
SCALE = 1 : 100

Cladding Materials Legend

Material #	Material Description
1	Colour 1 - Prefinished Corrugated Metal Cladding - Dark Grey
2	Colour 2 - Prefinished Corrugated Metal Cladding - Copper
3	Colour 3 - Prefinished Corrugated Metal Cladding - Light Grey
4	Colour 1 - Prefinished Corrugated + Perforated Metal Cladding - Dark Grey
5	Colour 2 - Prefinished Corrugated + Perforated Metal Cladding - Copper
6	Colour A - Vinyl Window System - Light Grey
7	Colour B - Vinyl Window System - Red
8	Prefinished Metal Flashing - Colour to Match Adjacent
9	Prefinished Metal Fascia
10	Wood Finish Soft Material
11	Steel Rod Support Structure - Shop Primed and Field Coated
12	Colour 1 - Rain Water Leader - Dark Grey
13	SBS Membrane Roof - Light Colour
14	Painted Steel Canopy Columns
15	Glazed Window System - SSG Vertical Joints and Horizontal Mullions
16	Aluminium Break Shape Panels - Colour to Match SSG + Mullions
17	Masonry Tile - Large Format Panels
18	Exposed Concrete



CASCADIA ARCHITECTS INC

NO.	DESCRIPTION	DATE
	Issued for DP Amendment	June 06, 2019

Copyright reserved. These drawings and the design contained therein or which may be inferred therefrom are, and at all times remain, the exclusive property of Cascadia Architects Inc. Cascadia Architects holds the copyright and ownership of the said drawings, which cannot be used for any purpose without the express written consent of Cascadia Architects.

RECEIVED  
JUN 10 2019

Project: **GVHS NIGEL VALLEY HOUSING**

Greater Victoria Housing Society  
856 Nigel Avenue, Saanich, BC

Scale: As indicated  
Sheet # 1715

Revision:

Sheet # **A-202**

PLANNING DEPT. DISTRICT OF SAANICH  
June 06, 2019

2019-06-06 11:20:36 AM