

SEAL:

NOTES:

ALL WORK TO CONFORM TO REQUIREMENTS OF APPLICABLE BUILDING CODES AND REQUIREMENTS OF AUTHORITY HAVING JURISDICTION (AHJ).

VERIFY ALL DIMENSIONS ON SITE.

INTERIOR WALLS DIMENSIONED FROM GRIDLINE TO FINISHED FACE OF WALL. EXTERIOR WALLS DIMENSIONED FROM GRIDLINE TO STRUCT. SHEATHING/STUD.

ALL STRUCTURAL ELEMENTS (BEAMS, JOISTS, FOUNDATION WALLS AND FOOTINGS, ETC.) TO BE SIZED BY A STRUCTURAL ENGINEER AS REQUIRED.

THIS DRAWING PACKAGE AND DESIGN ARE COPYRIGHT BACKYARD BUNGALOWS INC.

PROJECT NAME:

TAIT ST
GARDEN SUITE

PROJECT DESCRIPTION:

PROJECT NUMBER:

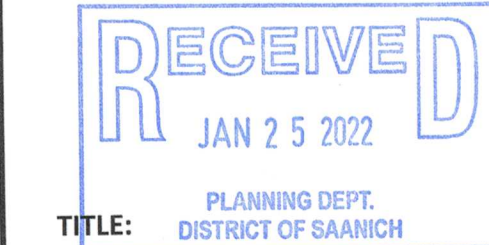
706

CIVIC ADDRESS:

599 TAIT ST, VICTORIA,
BC V8Z 2E1

ISSUE:

DEV. PERMIT APP.



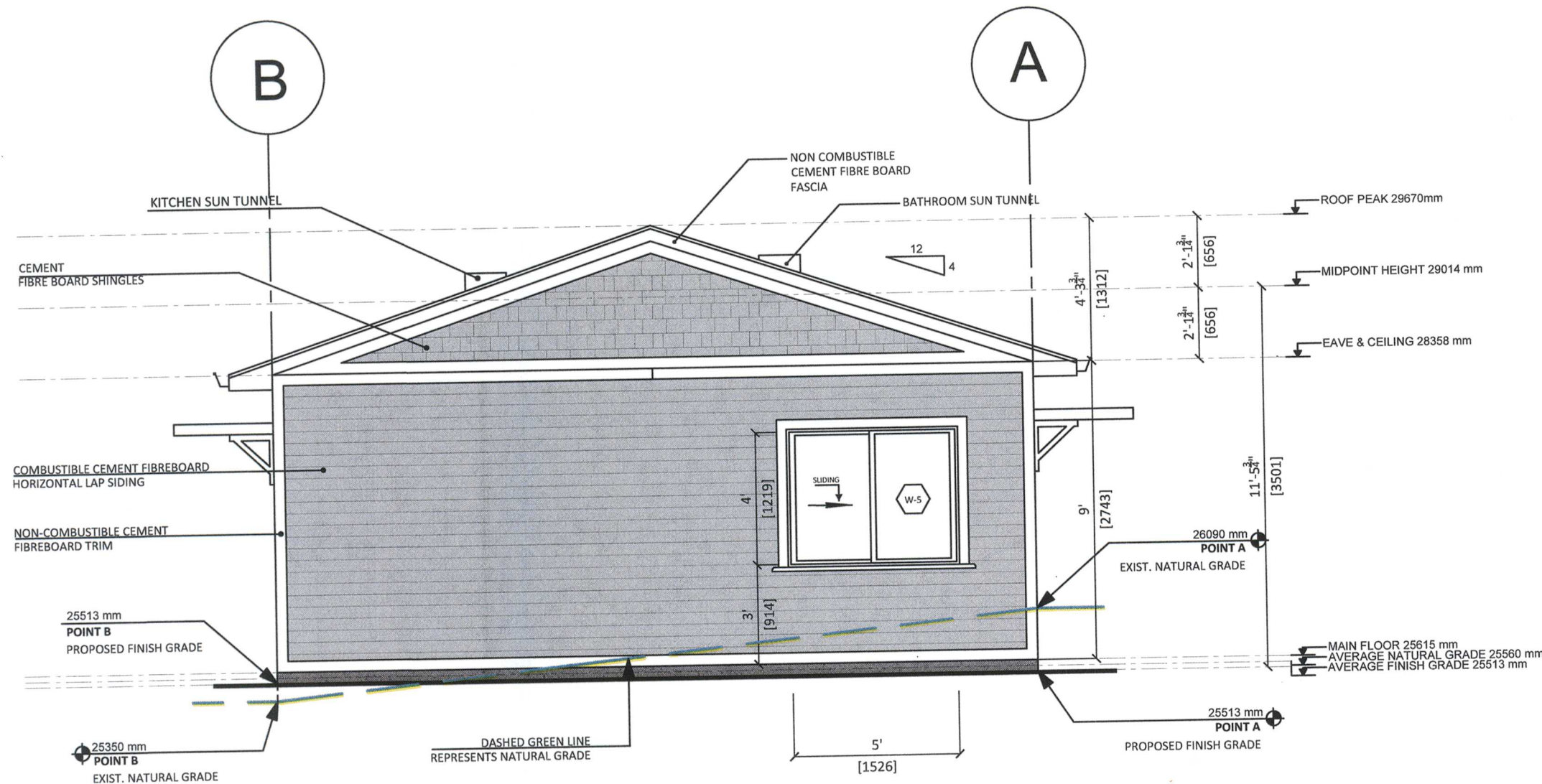
TITLE:

BUILDING
ELEVATIONS

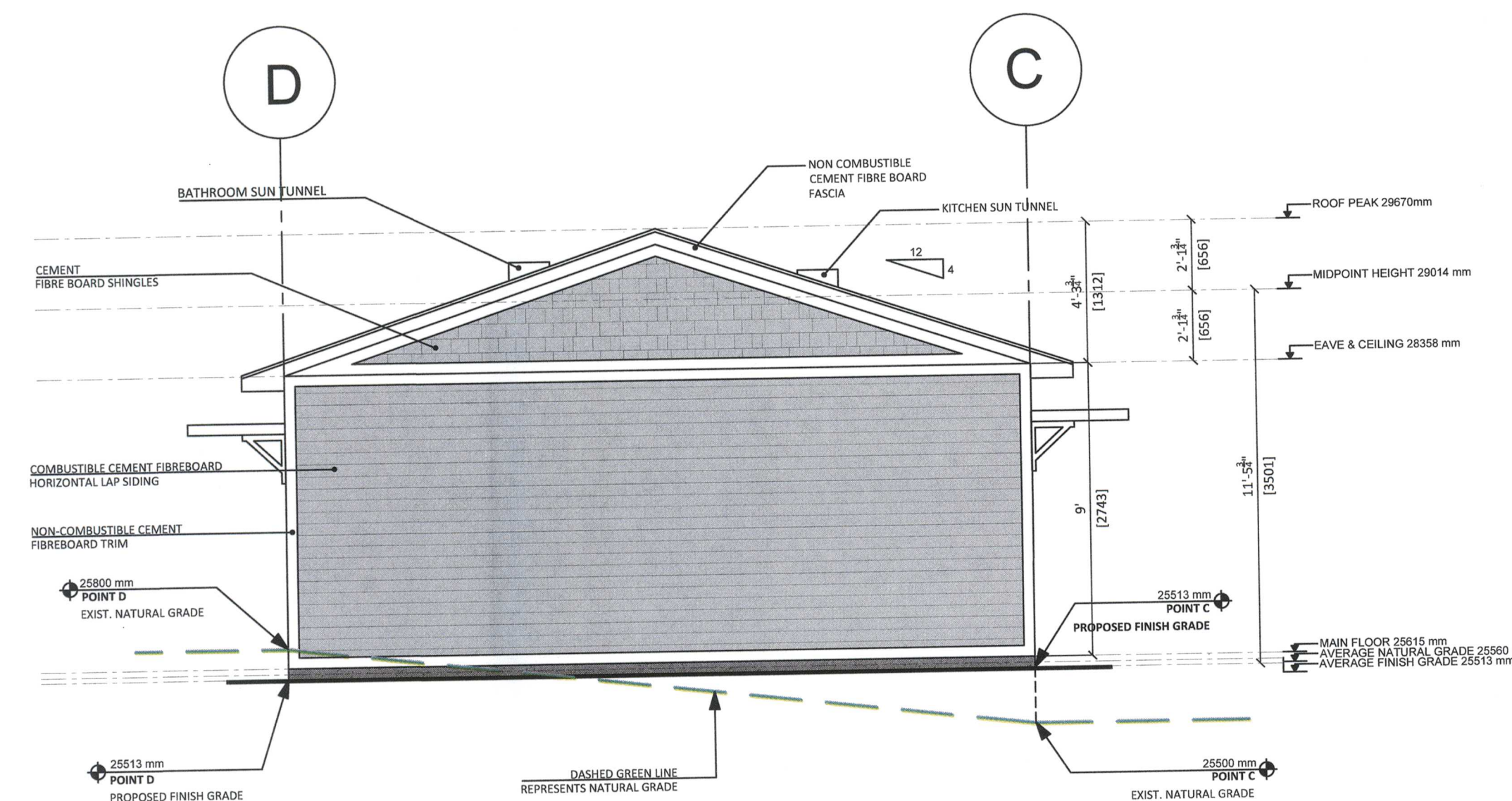
REVISION:

SHEET:

A.300



1 NORTH
A.200 1:50 (1/4" = 1' -0")

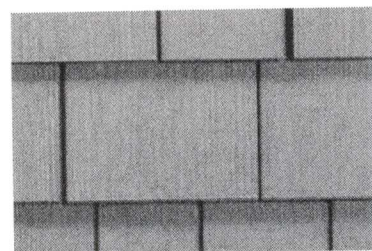


3 SOUTH
A.200 1:50 (1/4" = 1' -0")

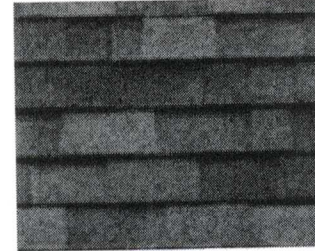
LIMITING DISTANCE							LIMITING DISTANCE CALCULATION
	SF	SM	GLAZING m²	GLAZING %	LIMITING DISTANCE m	GLAZING PERMITTED %	
North: Garden Suite	253 SF	23.50 SM	1.86	7.91 %	15.63	100%	From N garden suite wall to middle of Tait St
East: Garden Suite	272.97 SF	25.36 SM	3.25	12.82 %	16.30	100%	From E garden suite wall to middle of Glanford Ave
South: Garden Suite	253 SF	23.50 SM	0.00	0.00 %	5.16	39%	From S garden suite wall to S property line
West: Garden Suite	272.97 SF	25.36 SM	4.27	16.85 %	2.93	24%	From W garden suite wall to midpoint between garden suite W and wall Carport

Note: Glazing Permitted % for South Garden Suite (to enclosed deck) has been interpolated.

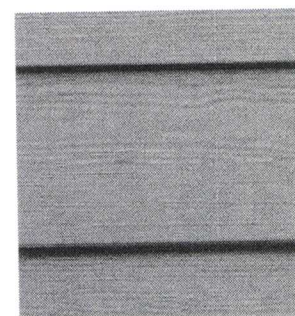
COLOUR PALLETTE AND MATERIALS		
ITEM	MATERIAL	COLOUR
Exterior Walls	Cement Fibre Board Lap Siding	Misty
Exterior Trim	Cement Fibre Board Trim	White
Roof	Asphalt Shingles	Black
Windows	Vinyl	White



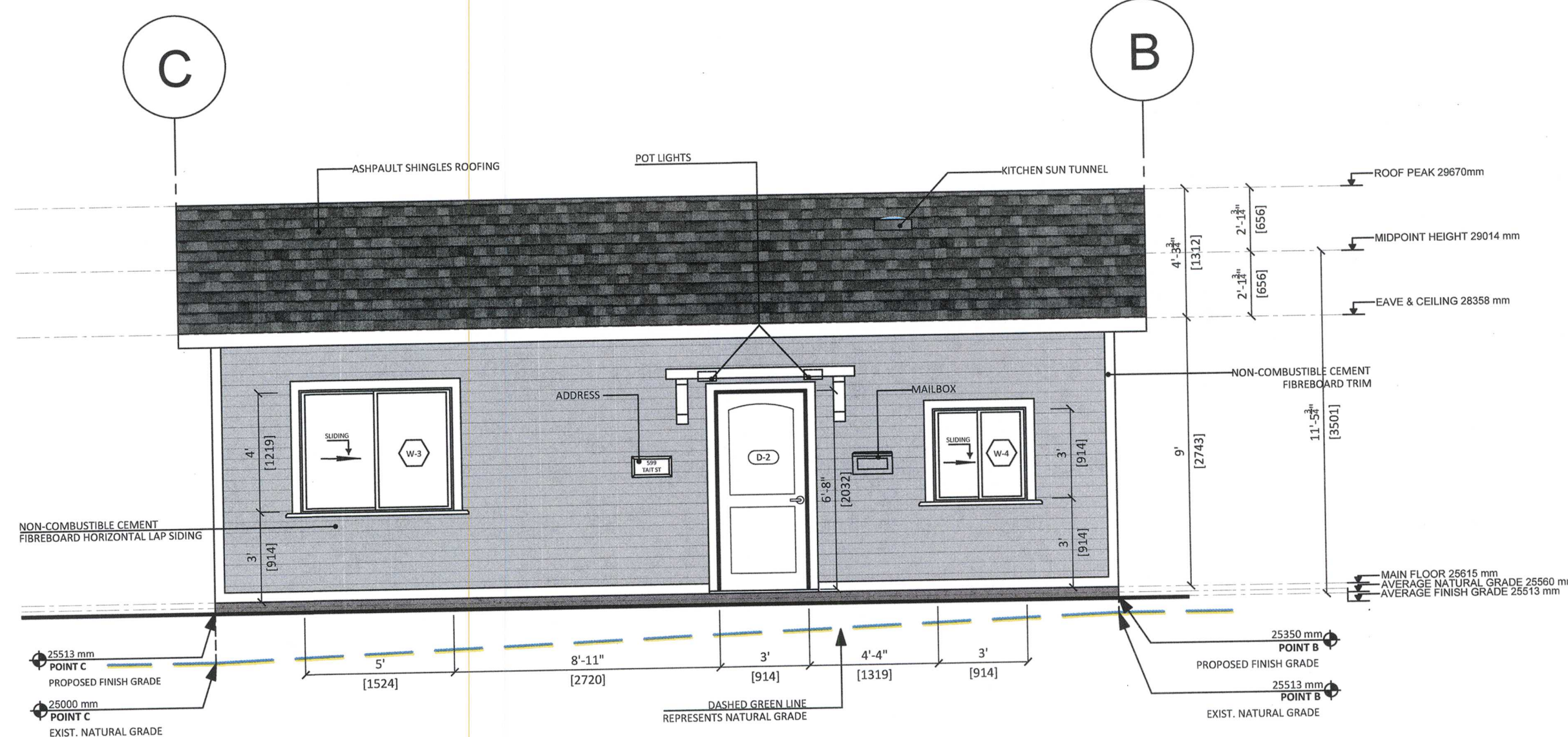
1. CEMENT FIBRE BOARD SHINGLES



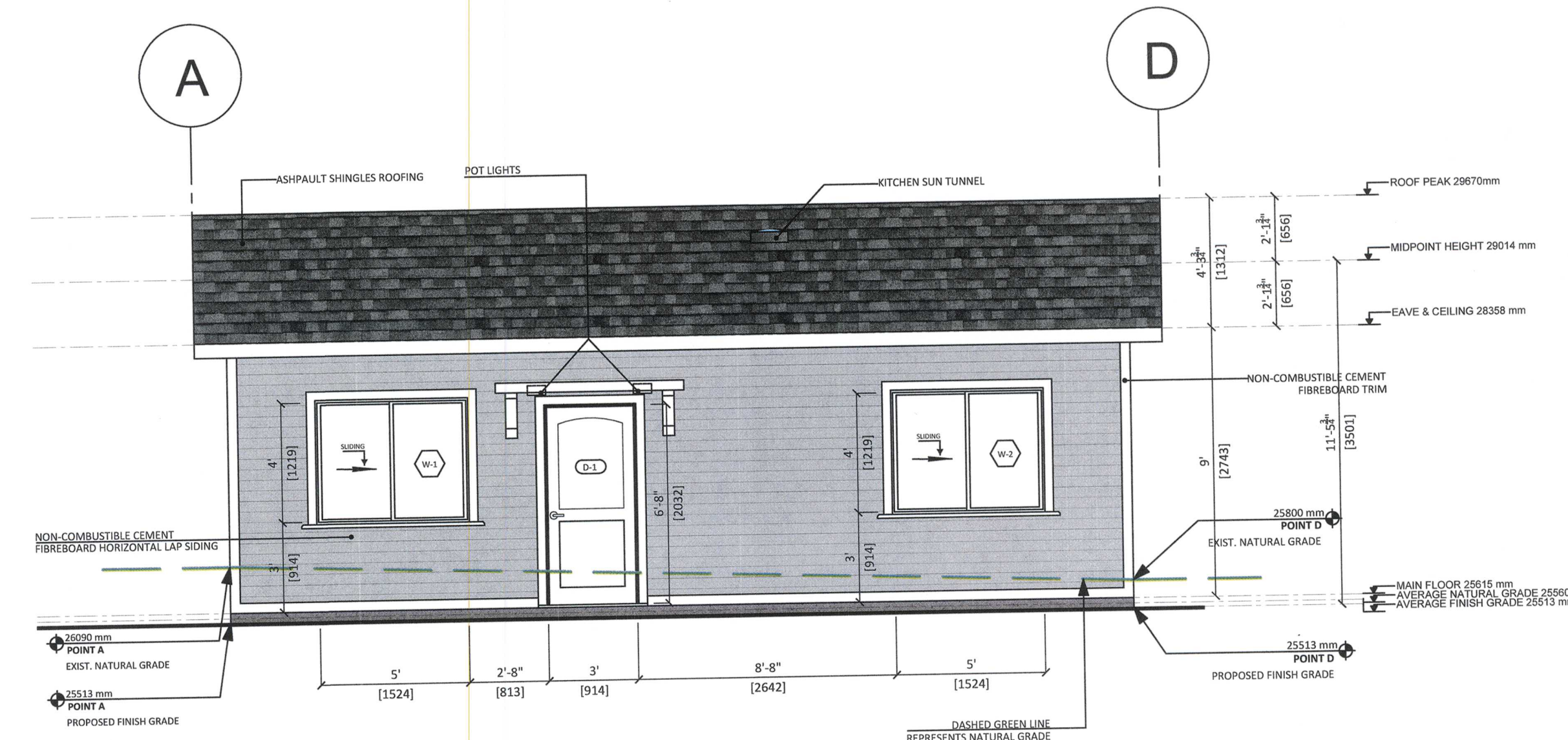
2. ASPHALT SHINGLES



CEMENT FIBRE BOARD LAP SIDING



2 EAST
A.200 1:50 (1/4" = 1' -0")



4 WEST
A.200 1:50 (1/4" = 1' -0")

