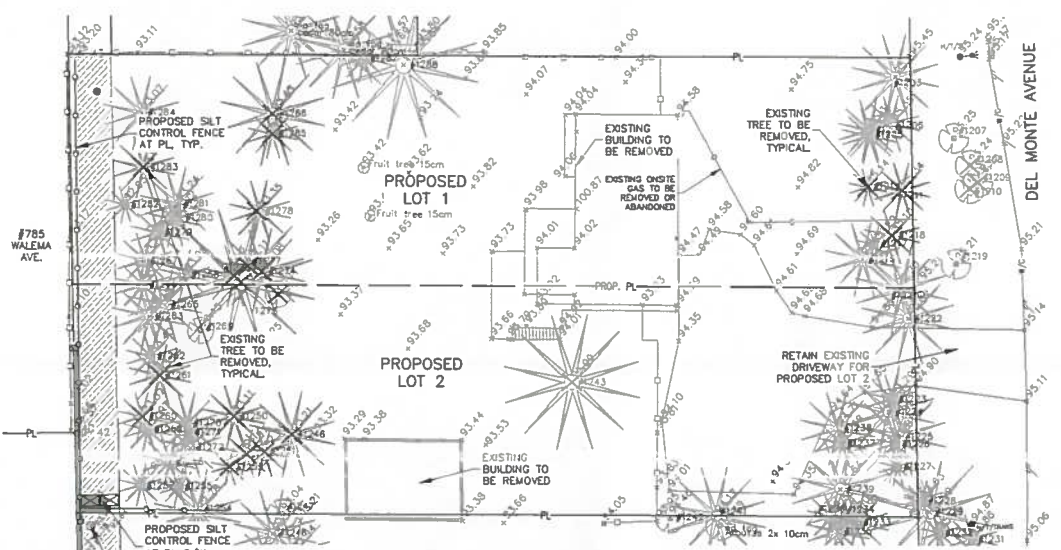


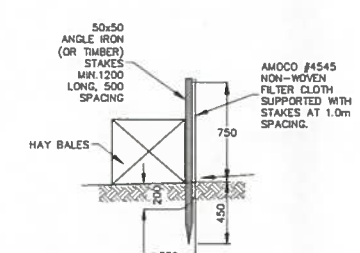
SITE SERVICING PLAN  
SCALE 1:200

KEY NOTES

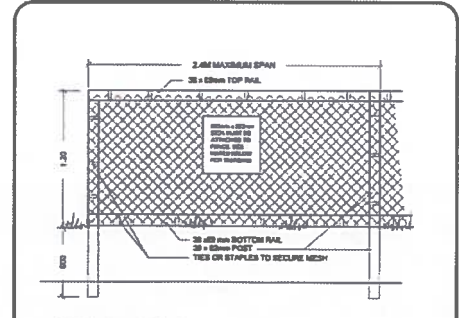
- (A) DISTRICT OF SAANICH CREWS TO DISCONNECT AND REMOVE EXISTING 13mm WATER SERVICE AND METER. WORK AT DEVELOPER'S EXPENSE.
  - (B) DISTRICT OF SAANICH TO INSTALL PROVISIONAL WATER SERVICE FOR FUTURE LOT 1.
  - (C) DISTRICT OF SAANICH TO INSTALL PROVISIONAL WATER SERVICE FOR FUTURE LOT 2.
  - (D) DISTRICT OF SAANICH TO INSTALL NEW 100mm SANITARY SERVICE C/W SIC INSIDE THE SRW.
- WORK BY DISTRICT OF SAANICH AT DEVELOPER'S EXPENSE
- (X) EXISTING GAS SERVICE TO BE CAPPED BY FORTIS BC AND RETAINED FOR FUTURE LOT 1.
  - (Y) FORTIS BC TO INSTALL NEW GAS SERVICE FOR FUTURE LOT 2.
  - (Z) EXISTING SANITARY SERVICE TO BE RETAINED FOR FUTURE LOT 1. VIDEO SCOPE THE ONSITE CONDITION AND LOCATION. PROVIDE DIGITAL VIDEO AND REPORT TO THE ENGINEER FOR REVIEW IF SERVICE SUITABLE FOR REUSE.



REMOVALS AND SILT CONTROL PLAN  
SCALE 1:250



TYPICAL SILT FENCE DETAIL  
SCALE 1:25



**TREE PROTECTION FENCING**

NOTES:

- FENCE WILL BE CONSTRUCTED USING 38 X 88 mm (2"x4") WOOD FRAME. TOP, BOTTOM AND POSTS. USE ORANGE SHOCK-RESISTANT MESH AND SECURE TO THE WOOD FRAME WITH 22G TIES OR GALVANIZED STAPLES.
- ATTACH A 500mm x 500mm SIGN WITH THE FOLLOWING WORDING: WARNING-HABITAT PROTECTION AREA. THIS SIGN MUST BE AFFIXED ON EVERY FENCE FACE OR AT LEAST EVERY 10 LINEAR METRES.

\* IN ROCKY AREAS, METAL POSTS (1-BAR OR REBAR) DRILLED INTO ROCK WILL BE ACCEPTED

GENERAL NOTES

- ALL CONSTRUCTION AND MATERIALS TO BE IN ACCORDANCE WITH THE DISTRICT OF SAANICH SPECIFICATIONS AND STANDARD DRAWINGS, MIMCO SPECIFICATIONS AND LATEST VERSION OF THE B.C. PLUMBING CODE (FOR ONSITE WORKS). WORK TO BE INSPECTED BY CONSULTING ENGINEER AND SAANICH PUBLIC WORKS INSPECTOR. FOR ANY AMBIGUITIES IN SPECIFICATIONS THE MOST STRINGENT/ROBUST SPECIFICATIONS SHALL GOVERN.
- AN OFFSITE WORKS PERMIT TO CONSTRUCT WORKS IN MUNICIPAL RIGHT OF WAYS MUST BE OBTAINED BY THE CONTRACTOR FROM THE DISTRICT PRIOR TO WORK. A PLUMBING PERMIT TO CONSTRUCT ONSITE PLUMBING WORKS MUST BE OBTAINED FROM THE DISTRICT PRIOR TO WORK. A PERMIT TO WORK UNDER OR ADJACENT TO BYLAW PROTECTED TREES TO BE OBTAINED FROM SAANICH PARKS BEFORE ANY WORKS STARTS.
- CONTRACTOR TO ARRANGE A PRE-CONSTRUCTION MEETING PRIOR TO ANY CONSTRUCTION THAT MUST INCLUDE A DISTRICT OF SAANICH REPRESENTATIVE AND THE CIVIL ENGINEER.
- ALL OFFSITE AREAS AFFECTED BY THE WORK ARE TO BE RESTORED TO ORIGINAL OR BETTER CONDITION BY CONTRACTOR AND COMPLETED IN PROMPT MANNER TO MINIMIZE LOCAL DISRUPTION.
- ALL EXISTING SERVICES ARE TO BE EXPOSED AT CONNECTION AND CROSSING POINTS BEFORE ANY CONSTRUCTION. ANY CONFLICTS WITH EXISTING SERVICES AND THE PROPOSED DESIGN SERVICES ARE TO REPORTED IMMEDIATELY TO THE ENGINEER AND SAANICH INSPECTOR.
- ALL WORK TO BE UNDERTAKEN AND COMPLETED BY THE CONTRACTOR IN SUCH A MANNER AS TO PREVENT THE RELEASE OF SEDIMENT LOADED WATER INTO THE STREET OR STORM SEWER. SILTATION FENCING TO BE ERRECTED BY CONTRACTOR PRIOR TO CONSTRUCTION AND MAINTAINED ON A REGULAR BASIS.
- ALL PLAN DIMENSIONS AND ALL ELEVATIONS ARE IN METRES (m) UNLESS NOTED OTHERWISE. ALL DETAIL DIMENSIONS ARE IN mm UNLESS NOTED OTHERWISE.
- CONTRACTOR TO ENSURE POSITIVE DRAINAGE OF ALL BOULEVARD AREAS TO AN APPROVED OUTLET. MINIMUM GRADE TO BE 2.0%.
- ANY BC HYDRO, TELUS, SHAW CABLE OR FORTIS BC GAS FACILITIES SHOWN ON THIS DRAWING ARE SCHEMATIC ONLY. REFER TO UTILITY COMPANY FOR DETAILS. CONTRACTOR TO CONFIRM LOCATION OF AND COORDINATE WITH APPLICABLE UTILITIES PRIOR TO INSTALLATION OF ANY OF THESE WORKS.
- CONTRACTOR TO ADJUST ALL APPURTENANCES TO THE PROPOSED FINISHED GRADES.
- ALL WORK TO BE CONDUCTED UNDER WORKSAFE BC REGULATIONS AND WORK AREAS TO BE PROTECTED BY APPROVED ROAD CONSTRUCTION FENCING. SAFETY IS THE CONTRACTOR'S RESPONSIBILITY.
- NOT ALL EXISTING UNDERGROUND SERVICES ARE SHOWN ON THIS DRAWING. CONTRACTOR TO CONFIRM THE LOCATION OF ANY UNDERGROUND SERVICES AND COORDINATE WITH APPLICABLE UTILITIES PRIOR TO ANY EXCAVATIONS.
- MATERIAL SUBSTITUTIONS ARE ACCEPTED ONLY BY WRITTEN PRE-APPROVAL OF THE ENGINEER.
- ALL TOPSOIL FOR THE ROAD BOULEVARD AREAS IS TO BE IMPORTED NO. 1 SCREENED TOPSOIL FREE OF COBBLES GRAVEL, CLUMPS OR OTHER DELETERIOUS MATERIALS.
- BACKFILL TO BE TYPE 'B' BACKFILL USE SAND BEDDING AND PIPE CUSHION WITH SELECT GRANULAR BACKFILL FOR NEW PIPE INSTALLATION IN DRIVEWAYS (CLASS B). COMPACT TO 95% MODIFIED PROCTOR DENSITY.
- PAVEMENT RESTORATION TO BE IN ACCORDANCE WITH SAANICH STD. DWG. G5-SS FOR RESIDENTIAL ROADS.
- CONTRACTOR TO CONTACT ENGINEER OF RECORD IMMEDIATELY IF ANY CONFLICT BETWEEN EXISTING INFRASTRUCTURE AND DESIGN FOUND.
- NEW 200mm DRAIN TO BE SDR 35 PVC PIPE C/W CLASS B GRAVEL BEDDING.
- CONTRACTOR TO PROFESSIONALLY FLUSH AND VIDEO TAPE THE NEW DRAIN MAIN. VIDEO REPORT TO BE PROVIDED BY CONTRACTOR TO CONSULTANT. VIDEO REPORT TO BE REVIEWED AND APPROVED BY THE DISTRICT OF SAANICH BEFORE ANY PAINTING/BACKFILLING. CONTRACTOR TO PERSONALLY REVIEW VIDEO TO CONFIRM THERE ARE NO PIPE DEFICIENCIES BEFORE VIDEO REPORTS ARE HANDED OVER TO CONSULTANT.
- ALL DRAIN AND SANITARY WORK IS TO START AT LOW POINT OF CONNECTION AND PROCEED UPSTREAM. TO DO OTHERWISE IS AT OWNER/CONTRACTOR'S RISK.
- CONTRACTOR TO ENSURE VEHICLE ACCESS THROUGH THE WORK SITE IS MAINTAINED AT ALL TIMES.

CALID SERVICES LTD. PREPARED THIS DRAWING FOR THE LISTED CLIENT ONLY AND ACCEPTS NO RESPONSIBILITY FOR THIRD PARTY USE.

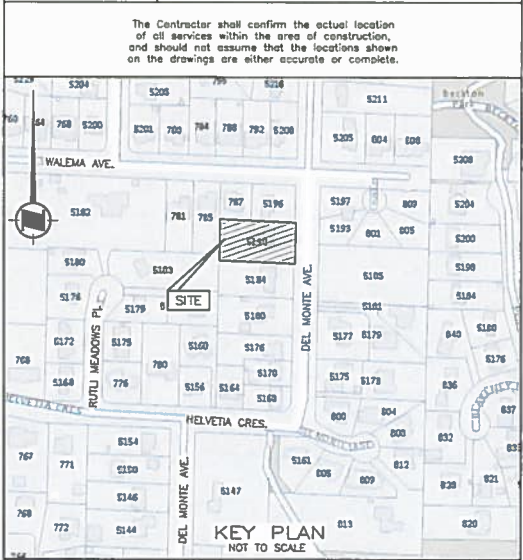
**ATTENTION:** CONTRACTOR TO GET HYDRO, TELUS, SHAW AND FORTIS BC CONTACTS AT CONSTRUCTION START. IT WILL BE THE CONTRACTOR'S RESPONSIBILITY ENTIRELY TO COORDINATE THESE UTILITIES.

**NOTICE:** IT SHALL BE THE DEVELOPER'S RESPONSIBILITY FOR CONDUCTING SITE INVESTIGATIONS FOR CONDITIONS AFFECTING THE PROJECT WORK. THIS MAY INCLUDE INVESTIGATIONS FOR ARCHEOLOGICAL MATERIALS, BEDROCK, SPECIAL SOILS, FILL, WASTEWATER, HAZARDOUS MATERIALS, OR OTHER DELETERIOUS CONDITIONS. VIDEO TAPING OF EXISTING SANITARY MAINS, DRAIN MAINS AND SERVICE PIPES. THE DEVELOPER SHALL PROVIDE THE INVESTIGATION FINDINGS IN A WRITTEN REPORT OR DVD VIDEO INSPECTION TO CALID SERVICES LTD. FOR USE IN OUR DESIGN AND CONSTRUCTION SERVICES.

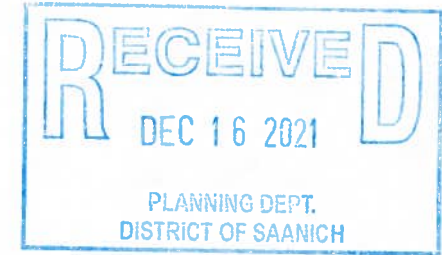


MINIMUM OF 72 HOURS NOTICE REQUIRED  
THE CONTRACTOR IS TO CALL B.C. SERVICES CALL AND HAVE EXISTING U/G SERVICES STAKED PRIOR TO ANY CONSTRUCTION.  
THIS DESIGN IS VALID ONLY IF REVIEWED DURING CONSTRUCTION BY CALID SERVICES LTD.

CIVIC ADDRESS: 5190 DEL MONTE AVE.  
LEGAL DESCRIPTION: AMENDED LOT B (DD3886510), SECTION 44, LAKE DISTRICT, PLAN 11104



KEY PLAN  
NOT TO SCALE



CONFIRM UNDERGROUND LOCATION WITH UTILITY COMPANIES

LEGEND - Existing services shown solid			REVISIONS			REVISIONS APPROVED			DESIGN APPROVED		
STANDARD MOUNT	100 mm	150 mm	CURB	SIDEWALK	SILT TRAP	REVISION # 1	REVISION # 2	REVISION # 3	EXCEPTIONS	APPROVED BY	DATE
POLE MOUNT	100 mm	150 mm	DITCH	WATER	FLUSH VALVE	APP. DATE SIGN	APP. DATE SIGN	APP. DATE SIGN	DESIGN ENG		
EXISTING U/G UTILITIES			DRAIN	WOODBOX	HYDRANT				ASSIST ENG		
PROPOSED U/G UTILITIES			GAS	MANHOLE	REDUCER				DESIGN GNC		
			SEWER	CLEANOUT	CAP				SCALES	Hor. Indicated	Vertical Indicated

DISTRICT OF SAANICH		CONSULTANT
Lot B (DD 3886510), Section 44, Lake District	5190 DEL MONTE AVE - SERVICING AND GRADING PLANS	815
B u. GEODETIC (CDV028) CONTR. MON. 5-26 ELEV. See Legal Survey		1 OF 1
DESIGN GNC	DRAWN gnc/ap	SAANICH Dwg. No. 21-079
CHECKED		SAANICH FILE SVS02363
DATE Dec 6, 2021		



207-2750 QUADRA ST. VICTORIA, B.C. V8T 4E8  
PHONE: (250) 388-6919  
FAX: (250) 381-6919  
engineer@calid.ca