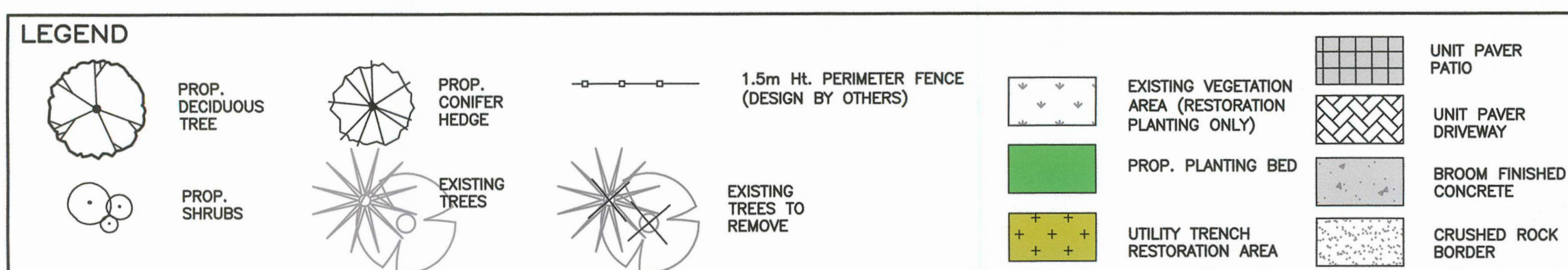


- KEY NOTES**
- AA 1.2m WIDE UNIT PAVER WALKWAY TO GARDEN SUITE.
  - BB PLANTING BED C/W ORNAMENTAL TREES & ACCENT PLANTINGS BELOW.
  - CC 600mm WIDE CRUSHED ROCK GRAVEL MAINTENANCE BORDER AT GARDEN SUITE. TIMBER EDGER & WEED BARRIER FABRIC REQUIRED.
  - DD 1.8m HT. WOOD PRIVACY SCREEN
  - EE PROVISIONAL ENTRANCE GATE. (TO BE DISCUSSED WITH DEVELOPER.)
  - FF CONCRETE STEPS TO COVERED PORCH. (DESIGN BY OTHERS.)
- KEY NOTES**
- AA 1.2m WIDE UNIT PAVER WALKWAY TO GARDEN SUITE.
  - BB PLANTING BED C/W ORNAMENTAL TREES & ACCENT PLANTINGS BELOW.
  - CC 600mm WIDE CRUSHED ROCK GRAVEL MAINTENANCE BORDER AT GARDEN SUITE. TIMBER EDGER & WEED BARRIER FABRIC REQUIRED.
  - DD 1.8m HT. WOOD PRIVACY SCREEN
  - EE PROVISIONAL ENTRANCE GATE. (TO BE DISCUSSED WITH DEVELOPER.)
  - FF CONCRETE STEPS TO COVERED PORCH. (DESIGN BY OTHERS.)

- KEY NOTES**
- A TYPICAL EXISTING TREE TO BE PROTECTED & RETAINED. TREE PROTECTION BE ERECTED PRIOR TO ANY SITE WORK. REFER TO DETAIL THIS PAGE.
  - B EXISTING NATIVE SHRUBS AREA AT LOT FRONTAGE. INVASIVE PLANT SPECIES TO BE REMOVED BY HAND. TARP LOADS. DO NOT COMPOST. CONTRACTOR TO ALLOW FOR 5 MAHONIA NERVOSA AND 10 SWORD FERN SHRUBS (PER FRONTAGE) TO INFILL BARE AREAS WHERE INVASIVE PLANTS WERE REMOVED.
  - C SIDE YARD C/W CRUSHED ROCK GRAVEL BORDER OVER WEED BARRIER FABRIC. TIMBER EDGER REQUIRED AT LAWN.
  - D RESIDENCE ENTRANCE PLANTING BED C/W DROUGHT TOLERANT SHRUBS, PERENNIALS AND ORNAMENTAL GRASSES. COLUMNAR SPECIMEN TREE & DWARF JAPANESE MAPLE TO BE PLANTED WHERE SPACE PERMITS.
  - E BROOM FINISHED CONCRETE ENTRANCE WALKWAY.
  - F TEMPORARY TREE PROTECTION FENCING, TYPICAL. FENCING TO BE REMOVED PRIOR TO PLANTING, SOD LAWN INSTALLATION & HYDRO-SEEDING.
  - G 1.5m HEIGHT CEDAR PANEL PRIVACY FENCE ON PROPERTY LINE. FENCE TO STOP 300mm SHORT OF EX. TREES ALONG PL.
  - H TYPICAL EXISTING TREE TO BE REMOVED.
  - I PERIMETER PLANTING BED (LOT 1) C/W NATIVE PLANTS.
  - J REAR PATIO C/W STANDARD UNIT PAVERS. EDGE RESTRAINT REQUIRED.
  - K BACKYARD EXISTING TREE STAND. TREES TO BE LIMBED UNDER DIRECT SUPERVISION OF PROJECT ARBORIST. INVASIVE PLANT SPECIES TO BE REMOVED BY HAND. TARP LOADS. DO NOT COMPOST. ALLOW FOR TWO (2) REMOVAL PERIODS. HYDRO-SEED TO LAWN. ALLOW FOR MIN. TWO (2) OVERSEEDING TO ESTABLISH LAWN WITH NO PATCHES. REFER TO NOTE M BELOW FOR ADDITIONAL HYDRO-SEEDING INFORMATION.
  - L PROPOSED DRIVEWAY C/W UNIT PAVING. REFER TO CALID SERVICES LTD. CIVIL DRAWING PACKAGE FOR INFORMATION.
  - M HYDRO-SEEDED RESTORATION AREA (175m<sup>2</sup> APPROX.) ALONG NEW DRAIN ROUTE. HYDRO-SEED AT A RATE OF 16lbs/ACRE. PREMIER PACIFIC SEEDS COASTAL REVEGETATION MIX TO BE USED. SEEDING TO TAKE PLACE IN EARLY FALL OR LATE SPRING. OWNERS TO WATER FOR ONE YEAR ESTABLISHMENT PERIOD.
  - N ENTRANCE PLANTING BED (LOT 1) C/W FLOWERING ACCENT PLANTS & ORNAMENTAL GRASSES. ADDRESS PODIUM TO BE DISCUSSED WITH DEVELOPER FOR THIS LOCATION.
  - O PERIMETER PLANTING BED (LOT 2) C/W FLOWERING ACCENT SHRUBS. TWO (2) SALVAGED RHODODENDRONS TO BE PLANTED IN NORTH EAST BED. FLOWERING EVERGREEN HEDGE TO BE PLANTED IN SOUTHWEST BED (AT PARKING STALL).
  - P PERIMETER SCREEN HEDGE. EMERALD ARBORVITAE TO BE 1.2m TALL AND SPACED AT 900mm (3'-0") O.C. TYPICAL.
  - Q 1.2m WIDE UNIT PAVER WALKWAY TO REAR GARDEN SUITE. EDGE RESTRAINT & SAND LEVELING COURSE REQUIRED. FOR CURVE RADIUS LESS THAN 3m, PAVERS TO BE SAW CUT.

- GENERAL NOTES**
- ALL PLANTING, TREE PIT SOIL VOLUMES, CONSTRUCTION, AND MATERIALS TO BE IN ACCORDANCE WITH SAANICH SPECIFICATIONS AND STANDARD DRAWINGS, MMCD SPECIFICATIONS AND BC NURSERY TRADES. ALL LANDSCAPING WORK TO BE REVIEWED BY CALID SERVICES LTD.
  - ALL OFFSITE AREAS AFFECTED BY THE WORK ARE TO BE REINSTATED TO ORIGINAL OR BETTER CONDITION BY CONTRACTOR AND COMPLETED IN PROMPT MANNER TO MINIMIZE LOCAL DISRUPTION.
  - CONTRACTOR TO ENSURE POSITIVE DRAINAGE OF ALL LAWNS AND PLANTING AREAS TO AN APPROVED OUTLET. MINIMUM GRADE TO BE 2.0%.
  - CONTRACTOR TO CONFIRM LOCATION OF AND COORDINATE WITH APPLICABLE UTILITIES PRIOR TO INSTALLATION OF ANY OF THE LANDSCAPE WORKS.
  - CONTRACTOR TO BE REGISTERED WITH WORK SAFE BC AND ALL WORK TO BE CONDUCTED UNDER WORK SAFE BC REGULATIONS AND WORK AREAS TO BE PROTECTED BY APPROVED RIGID CONSTRUCTION FENCING.
  - EXISTING & PROPOSED UNDERGROUND SERVICES ARE NOT SHOWN ON THIS DRAWING. CONTRACTOR TO CONFIRM THE LOCATION OF ANY UNDERGROUND SERVICES AND COORDINATE WITH APPLICABLE UTILITIES PRIOR TO ANY EXCAVATIONS.
  - FOR ANY AMBIGUITIES IN SPECIFICATIONS THE MOST CONSERVATIVE/ROBUST SPECIFICATIONS SHALL GOVERN.
  - CONTRACTOR TO NOTIFY CALID SERVICES LTD. IMMEDIATELY OF ANY CONFLICTS OR DISCREPANCIES.
  - THE CONTRACTOR IS SOLELY RESPONSIBLE TO ENSURE THEIR CREW HAS THE MOST CURRENT LANDSCAPE DRAWINGS IN THE FIELD.
  - ALL PLANTING BEDS, HYDROSEEDING AREAS, & SOD LAWNS TO BE WATERED FOR A MIN. TWO YEAR ESTABLISHMENT PERIOD MAY 15 TO SEPTEMBER 30 (TWICE DAILY, THREE DAYS A WEEK, FOR MIN. 15 MIN. DURATION) & IN TIMES OF DROUGHT, AN AUTOMATIC IRRIGATION SYSTEM WITH FLOW SENSOR, CENTRAL SHUT-OFF VALVE, AND METER, PRESSURE REGULATING DEVICE AND MOISTURE SENSOR/RAIN DELAY CONTROLLER IS RECOMMENDED.
  - TWO (2) 150mm DIAMETER PVC SLEEVES TO BE INSTALLED UNDER DRIVEWAYS FOR FUTURE LIGHTING OR IRRIGATION BY OWNER.
  - CONTRACTOR TO REMOVE TREE PROTECTION FENCING ONCE SITE WORK COMPLETE AND READY FOR TURN OVER TO LANDSCAPE CONTRACTOR FOR SOIL PLACEMENT & PLANTING.

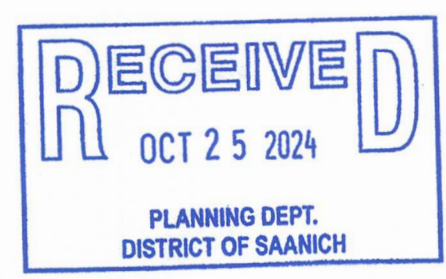
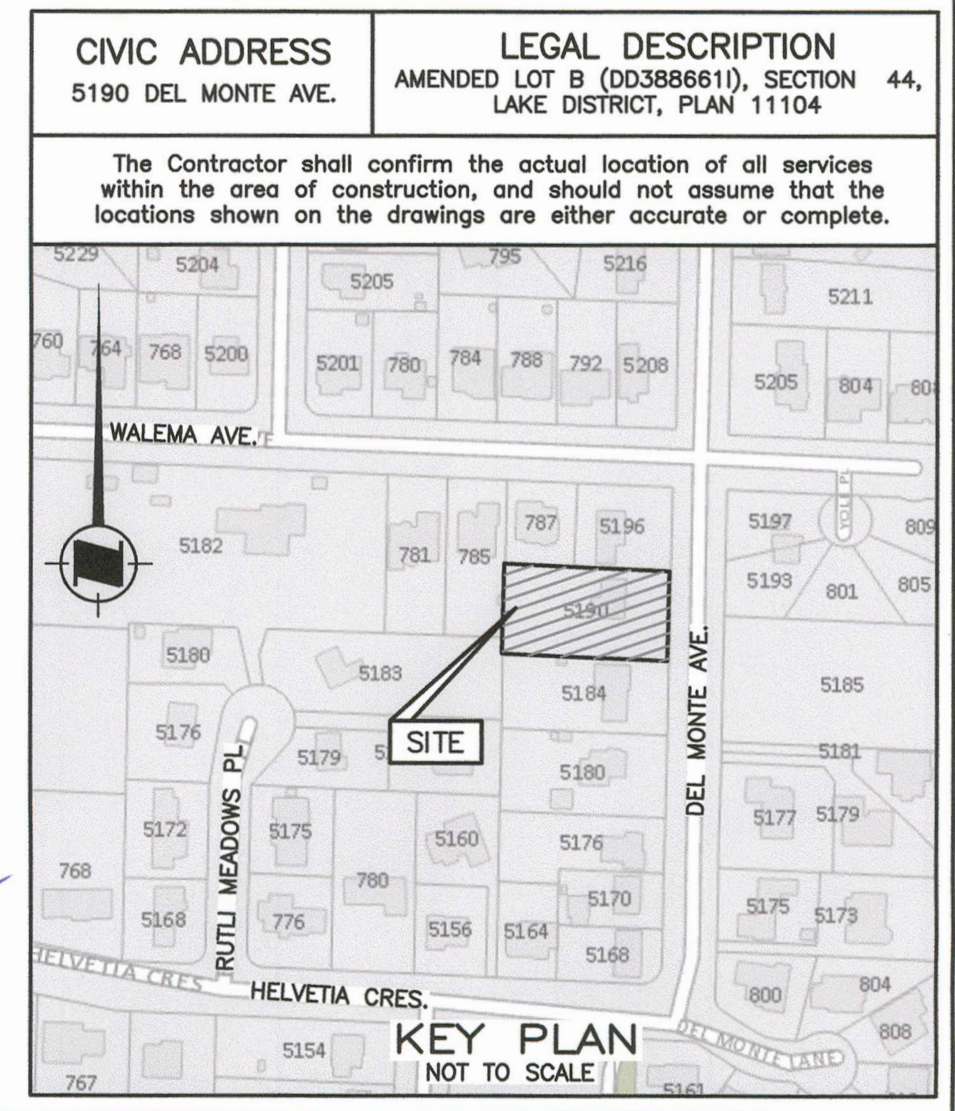


CONFIRM UNDERGROUND LOCATION WITH UTILITY COMPANIES		LEGEND - Existing services shown solid		REVISIONS		REVISIONS APPROVED		DESIGN APPROVED		DISTRICT OF SAANICH		CONSULTANT	
STANDARD MOUNT	100 W 100 W 100 W 100 W 100 W 100 W	CURB	—C—	SIDEWALK	—S—	SILT TRAP	—S—	VALVE	—V—	Lot B (DD 3886611), Section 44, Lake District		FILE No.	815L
POLE MOUNT	100 W 100 W 100 W 100 W 100 W 100 W	DITCH	—D—	WATER	—W—	CONC.BOX	—C—	FLUSH VALVE	—F—	5190 DEL MONTE AVE—LANDSCAPE PLAN		1 OF 2	
EXISTING U/G UTILITIES	.....	DRAIN	—D—			WOODBOX	—W—	HYDRANT	—H—	B.M. GEODETIC (CGVD28) CNTRL MON. 5-26 ELEV. See Legal Survey		SAANICH DWG. No.	21-079
PROPOSED U/G UTILITIES	.....	GAS	—G—	MANHOLE	—M—	CATCHBASIN	—C—	REDUCER	—R—	DESIGN dp DRAWN dp CHECKED		SAANICH FILE	SVS02363
		SEWER	—S—	CLEANOUT	—C—	CAP	—C—	PLUG	—P—	SCALES Hor. Indicated Vertical Indicated DATE MAY 13/24			



THIS DESIGN IS VALID ONLY IF REVIEWED DURING CONSTRUCTION BY CALID SERVICES LTD.

THE CONTRACTOR IS TO CALL B.C. ONE CALL AND HAVE EXISTING U/G SERVICES STAKED PRIOR TO ANY CONSTRUCTION.

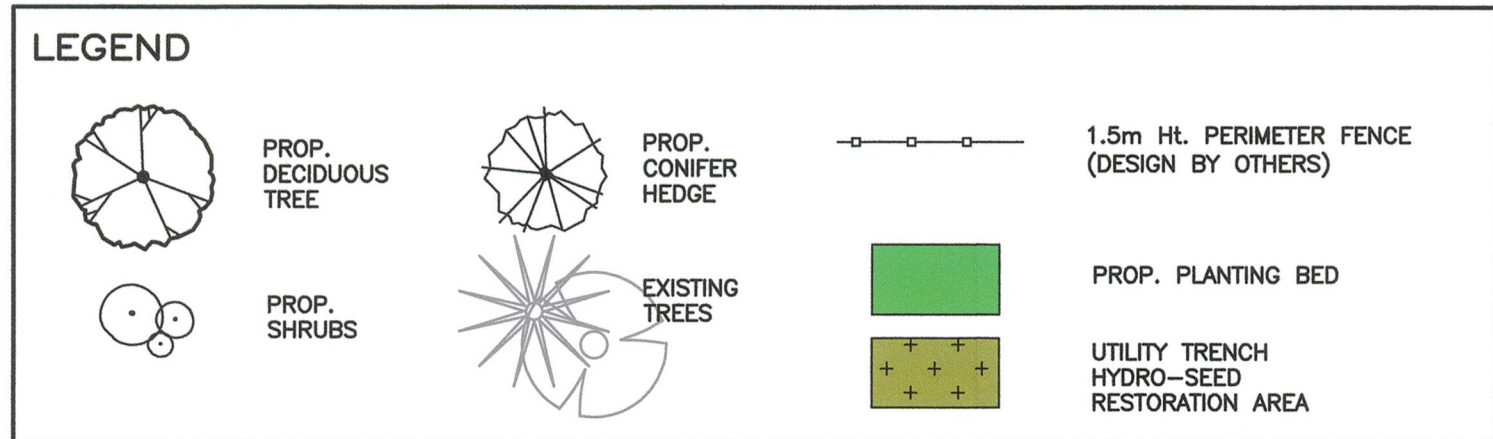
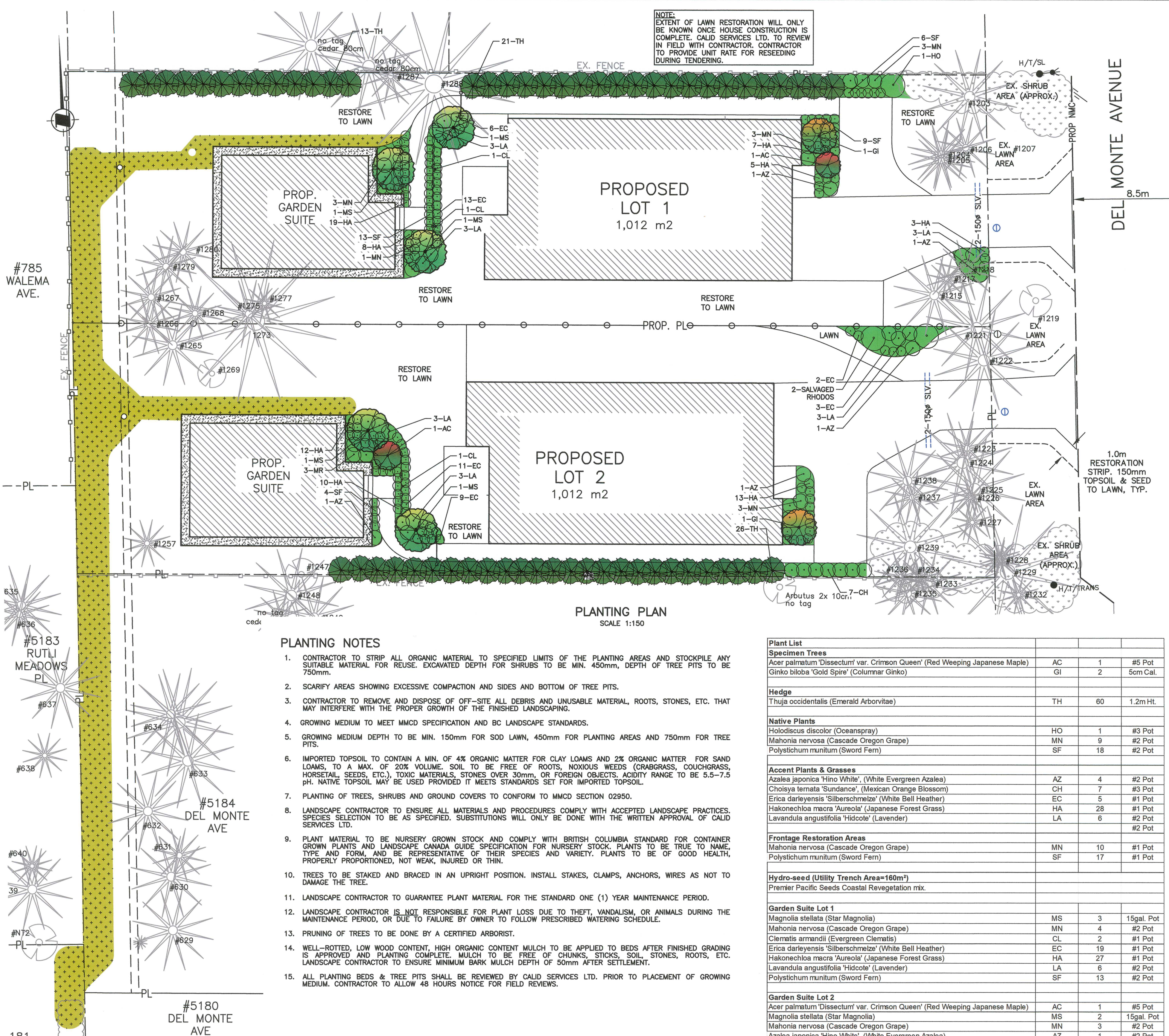


NOTICE: FAILURE BY THE CONTRACTOR TO CONTACT CALID SERVICES LTD. FOR PERIODIC FIELD REVIEWS MAY RESULT IN WORK BEING REDONE AT CONTRACTOR'S EXPENSE.

**CALID Services Ltd.**

207-2750 QUADRA ST. VICTORIA, B.C. V8T-4E8  
PHONE: (250) 388-6919  
FAX: (250) 381-6919  
engineer@calid.ca





CONFIRM UNDERGROUND LOCATION WITH UTILITY COMPANIES

LEGEND - Existing services shown solid									
STANDARD MOUNT	100 W	150 W	250 W	400 W	CURB	—	SEWAGE	—	W
POLE MOUNT	100 W	150 W	250 W	400 W	DITCH	—	WATER	—	W
EXISTING U/G UTILITIES	100 W	150 W	250 W	400 W	CONC. BOX	—	WOODBOX	—	W
PROPOSED U/G UTILITIES	100 W	150 W	250 W	400 W	GAS	—	MANHOLE	—	W
					SEWER	—	CLEANOUT	—	W

REVISIONS									
REVISION # 1	DATE	SIGN	REVISION # 2	DATE	SIGN	REVISION # 3	DATE	SIGN	
APP.	DESIGN	DESIGN	APP.	DESIGN	DESIGN	APP.	DESIGN	DESIGN	
DATE	DATE	DATE	DATE	DATE	DATE	DATE	DATE	DATE	

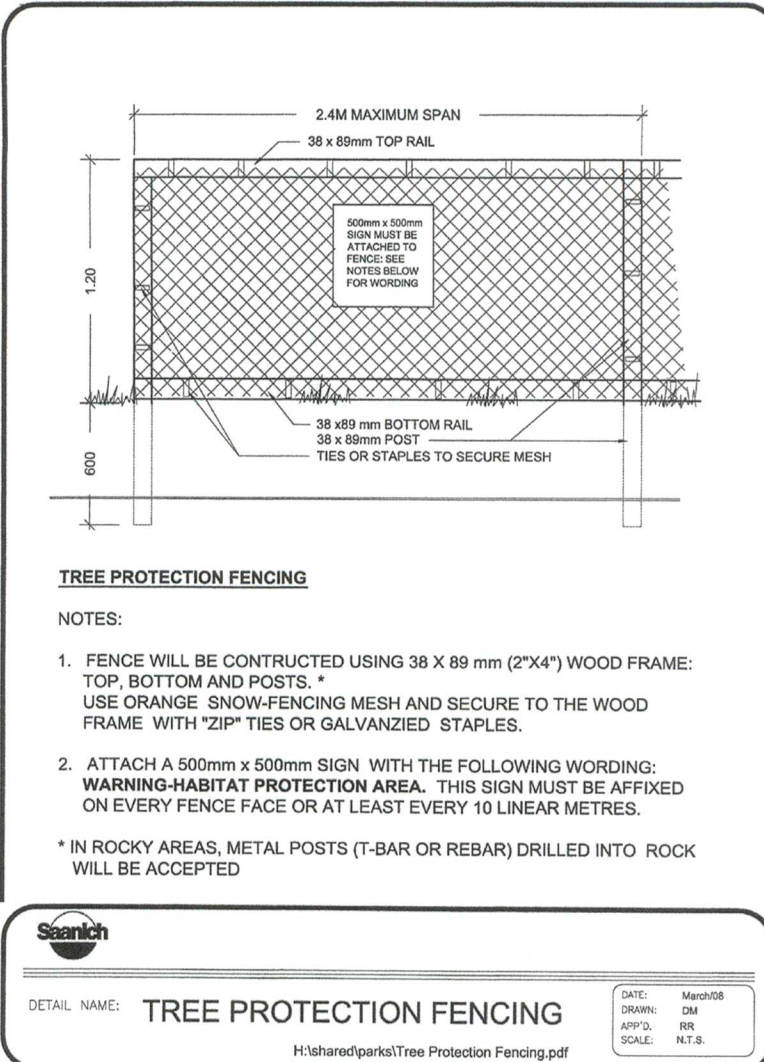
REVISIONS APPROVED									
REVISION # 1	DATE	SIGN	REVISION # 2	DATE	SIGN	REVISION # 3	DATE	SIGN	
APP.	DESIGN	DESIGN	APP.	DESIGN	DESIGN	APP.	DESIGN	DESIGN	
DATE	DATE	DATE	DATE	DATE	DATE	DATE	DATE	DATE	

DESIGN APPROVED									
EXCEPTIONS	DATE	SIGN	DESIGN ENG	DATE	SIGN	ASSIST. ENG	DATE	SIGN	
APP.	DESIGN	DESIGN	APP.	DESIGN	DESIGN	APP.	DESIGN	DESIGN	
DATE	DATE	DATE	DATE	DATE	DATE	DATE	DATE	DATE	

DISTRICT OF SAANICH									
Lot B (DD 388661), Section 44, Lake District	5190 DEL MONTE AVE-PLANTING PLAN	B.M. GEODETIC (CGVD28) CNTRL MON. 5-26	ELEV. See Legal Survey	DESIGN dp	DRAWN dp	CHECKED	DATE MAY 13/24	CONSULTANT FILE No.	815L 2 OF 2
SAANICH DWG. No.	21-079	SAANICH FILE	SVS02363						

Tree Replacement Table						
Tree Tag #	Species	DBH	Location	Status	Arborist Recommendation	Replacement Ratio
628	D.Fir	25	private	not protected	Remove, refer to Capitol Tree Service Tree Inventory Revised May 3, 2024 for detailed descriptions.	0
NT.1	Big Leaf Maple	40	private	protected		3:1
1207	Big Leaf Maple	58	municipal	protected		3:1
1208	Big Leaf Maple	41	municipal	protected		3:1
1209	Big Leaf Maple	58	municipal	protected		3:1
1210	Big Leaf Maple	84	municipal	protected		3:1
1211	D.Fir	42	private	protected		3:1
1212	D.Fir	33	private	protected		3:1
1241	Western Redcedar	77	private	protected		2:1
1242	Big Leaf Maple	48	private	protected		2:1
1243	Western Redcedar	112	private	protected		2:1
1246	Western Redcedar	68	private	protected		2:1
1250	Western Redcedar	55	private	protected		2:1
1251	Western Redcedar	37	private	protected		2:1
1252	D.Fir	44	private	protected		2:1
1253	D.Fir	30	private	protected		2:1
1255	D.Fir	27	private	not protected		2:1
1256	Western Redcedar	45	private	protected		2:1
1261	Western Redcedar	48	private	protected		3:1
1262	D.Fir	41	private	protected		3:1
1263	D.Fir	63	private	protected		3:1
1269	Big Leaf Maple	36	private	protected		3:1
1270	D.Fir	53	private	protected		2:1
1271	Western Redcedar	26	private	not protected		2:1
1272	D.Fir	58	private	protected		2:1
1278	Western Redcedar	88	private	protected		2:1
1282	Grand Fir	33	private	protected		1:1
1283	D.Fir	51	private	protected		3:1
1284	Western Redcedar	95	private	protected		1:1
1285	Western Redcedar	43	private	protected		1:1
1286	Western Redcedar	87	private	protected		1:1
1289	Arbutus	34	private	protected		1:1
No Tag	Fruit	15cm	private	not protected		0
No Tag	Fruit	15cm	private	not protected		0
Replacement Trees Required:						69
Notes:						
1. Protected tree status and replacement ratios as per Saanich Tree Protection By-Law, 2014 No. 9272.						
2. Refer to Capital City Tree Service Ltd.'s Tree Inventory for additional information.						
3. Search Parks to review & confirm in writing tree replacement requirements for project prior to Tree Removal Permit being issued to replace.						

Notes:  
1. Protected tree status and replacement ratios as per Saanich Tree Protection By-Law, 2014 No. 9272.  
2. Refer to Capital City Tree Service Ltd.'s Tree Inventory for additional information.  
3. Saanich Parks to review & confirm in writing tree replacement requirements for project prior to Tree Removal Permit being issued to developer.



RECEIVED  
OCT 25 2024  
PLANNING DEPT.  
DISTRICT OF SAANICH

REGISTERED MEMBER  
DANIK HAZEL BROUWER  
OCT 25 2024

THIS DESIGN IS VALID ONLY IF REVIEWED DURING CONSTRUCTION BY CALID SERVICES LTD.

BC 1 CALL  
1-800-474-6886  
CELLULAR \*6886  
THE CONTRACTOR IS TO CALL B.C. ONE CALL, AND HAVE EXISTING U/G SERVICES STAKED PRIOR TO ANY CONSTRUCTION.

NOTICE:  
FAILURE BY THE CONTRACTOR TO CONTACT CALID SERVICES LTD. FOR PERIODIC FIELD REVIEWS MAY RESULT IN WORK BEING REDONE AT CONTRACTOR'S EXPENSE.

CALID Services Ltd.

207-2750 QUADRA ST.  
VICTORIA, B.C. V8T-4E8  
PHONE: (250) 388-6919  
FAX: (250) 361-6919  
engineer@calid.ca