



EXTERIOR FINISHES

- 1 - WALL, METAL PANELS
Metallic finish
- 2 - WALL, BRICK
Red brick
- 3 - WALL, METAL SIDING
Horizontal corrugated metal
- 3a - WALL, METAL SIDING
Vertical metal
- 4 - WALL, CONCRETE
Exposed concrete, painted
- 5 - ROOF, METAL
Corrugated metal
- 6 - DECORATIVE METAL PANEL
Prefabricated metal, painted
- 7 - CORNICHE
Prefabricated metal, painted
- 8 - FASCIA
Prefabricated metal, painted
- 9 - COLUMN
Steel, filled with concrete
- 10 - WINDOW
Aluminum Colour Black / Dark gray
- 11 - DOOR LEAF
Metal, painted
- 12 - DOOR FRAME
Metal, Painted to match windows
- 13 - RAIN WATER LEADER + GUTTER
Pre-finished metal
- 14 - FLASHING
Pre-finished metal
- 15 - PLANTER
Pre-finished metal
- 16 - WINDOW SILL
Concrete

- T.O. ROOF [36.54m]
65'0" [+ 1.45m]
- U/S TRUSS [35.09m]
61'0" [+ 1.85m]
- 4TH FLR [32.04m]
51'0" [+ 1.55m]
- 3RD FLR [27.17m]
35'0" [+ 1.07m]
- 2ND FLR [22.44m]
19'6" [+ 0.59m]
- GROUND FLR [16.50m]
0'-0" [+ 0.00m]
- PARAKADE [13.15m]
-11'0" [- 3.35m]

1 DUPPLIN ROAD ELEVATION [SOUTH]
Scale: 1:100

SIGN BYLAW
SIGN DISTRICT D (M1-DW)

12. SIGN DISTRICT D
(A) IN SIGN DISTRICT D, THE FOLLOWING SIGNS ARE PERMITTED:
 I) ONE FREESTANDING SIGN ADJACENT TO EACH STREET BOUNDING THE LOT
 II) ONE FASCIA SIGN OR CANOPY SIGN OR WALL SIGN, PER BUSINESS PER BUILDING FACE
 III) ONE MARQUEE SIGN PER BUSINESS
 IV) ONE DIRECTIONAL SIGN PER ENTRANCE OR EXIT TO THE LOT
 V) ONE TIME AND TEMPERATURE DIGITAL SIGN FORMING PART OF ONE OF THE ABOVE SIGNS
 VI) ONE TEMPORARY SIGN PER STREET FRONTAGE

COPY AREA ALLOWED:
 MAX COPY AREA OF ALL FASCIA SIGNS/ CANOPY SIGNS/ WALL SIGNS ON ANY BUILDING SHALL NOT EXCEED 0.6 M² (6.5 FT²) FOR EACH METRE (3.3 FT) OF HORIZONTAL BUILDING FACE FRONTING A STREET.

42.67 M (140 FT) HORIZONTAL BUILDING FACE [SOUTH]
 0.6 SM x 42.67 M = 25.60 SM (275.6 SF) MAX COPY AREA ALLOWED [SOUTH FACE]

28.65 M (94 FT) HORIZONTAL BUILDING FACE [EAST]
 0.6 SM x 28.65 M = 17.19 SM (185.0 SF) MAX COPY AREA ALLOWED [EAST FACE]

RECEIVED
AUG 02 2017
PLANNING DEPT.
DISTRICT OF SAANICH

ISSUED FOR
DEVELOPMENT PERMIT
AUG 01, 2017

A 8/01/17 ISSUED FOR D.P.
ISSUES.

COPYRIGHT RESERVED:
THE COPYRIGHT TO THIS DRAWING AND ITS CONTENTS IS RESERVED AND REMAINS AT ALL TIMES THE EXCLUSIVE PROPERTY OF BONI-MADDISON ARCHITECTS AND SHALL NOT BE USED, MODIFIED, OR REPRODUCED WITHOUT THE EXPRESSED WRITTEN CONSENT OF BONI-MADDISON ARCHITECTS.

DISCLAIMERS:
THE CONTRACTOR SHALL VERIFY ALL DIMENSIONS, AND IMMEDIATELY REPORT ANY ERRORS AND/OR OMISSIONS. DO NOT SCALE DRAWINGS.

BONI • MADDISON
Architects

3732 West Broadway
Vancouver, B.C., V6R 2C1
T: 604 688 5894
F: 604 688 5899
E: info@bonimaddison.com

PROJECT:
472 + 476 DUPPLIN ROAD
SAANICH, B.C.

TITLE:
ELEVATION [SOUTH]

DRAWN: DD
SCALE: 1:200
JOB #: 15-49
DATE: OCT 27 2016

DRAWING NO:
A4.1
REV. NO:



EXTERIOR FINISHES

- 1 - WALL, METAL PANELS
Metallic finish
- 2 - WALL, BRICK
Red brick
- 3 - WALL, METAL SIDING
Horizontal corrugated metal
- 3a - WALL, METAL SIDING
Vertical metal
- 4 - WALL, CONCRETE
Exposed concrete, painted
- 5 - ROOF, METAL
Corrugated metal
- 6 - DECORATIVE METAL PANEL
Prefabricated metal, painted
- 7 - CORNICE
Prefabricated metal, painted
- 8 - FASCIA
Prefabricated metal, painted
- 9 - COLUMN
Steel, filled with concrete
- 10 - WINDOW
Aluminum Colour Black / Dark gray
- 11 - DOOR LEAF
Metal, painted
- 11 - DOOR FRAME
Metal, Painted to match windows
- 12 - RAIN WATER LEADER + GUTTER
Pre-finished metal
- 13 - FLASHING
Pre-finished metal
- 14 - PLANTER
Pre-finished metal
- 15 - WINDOW SILL
Concrete

T.O. ROOF [36.54m]
65'0" [± 1.45m]

U/S TRUSS [35.09m]
61'0" [± 3.05m]

4TH FLR [32.04m]
51'0" [± 4.88m]

3RD FLR [27.17m]
35'0" [± 4.72m]

2ND FLR [22.44m]
19'0" [± 5.94m]

GROUND FLR [16.50m]
0'0" [± 0.00m]

PARAKADE [13.15m]
-11'0" [± 3.35m]

BUILDING FASCIA SIGN
22' MAX. COPY HEIGHT
66 S.F.

BUSINESS FASCIA SIGN
18' MAX. COPY HEIGHT
22 S.F. - TYPICAL

1 TENNYSON AVE ELEVATION [EAST]
Scale: 1:100



REVISIONS:

ISSUED FOR DEVELOPMENT PERMIT
AUG 01, 2017

A 8/01/17 ISSUED FOR D.P.
ISSUES:

COPYRIGHT RESERVED
THE COPYRIGHT TO THIS DRAWING AND ITS CONTENTS IS RESERVED AND REMAINS AT ALL TIMES THE EXCLUSIVE PROPERTY OF BONI-MADDISON ARCHITECTS AND SHALL NOT BE USED, MODIFIED, OR REPRODUCED WITHOUT THE EXPRESSED WRITTEN CONSENT OF BONI-MADDISON ARCHITECTS
DIMENSIONS: THE CONTRACTOR SHALL VERIFY ALL DIMENSIONS, AND IMMEDIATELY REPORT ANY ERRORS AND/OR OMISSIONS. DO NOT SCALE DRAWINGS.

BONI • MADDISON
Architects
3732 West Broadway
Vancouver, B.C., V6R 2C1
T: 604 688 5894
F: 604 688 5899
E: info@bonimaddison.com

RECEIVED
AUG 02 2017
PLANNING DEPT.
DISTRICT OF SAANICH

PROJECT:	472 + 476 DUPPLIN ROAD SAANICH, B.C.		
TITLE:	ELEVATION [EAST]		
DRAWN:	DD	DRAWING NO.:	A4.2
SCALE:	1:200	JOB NO.:	
DATE:	OCT 27 2015	REV NO.:	



EXTERIOR FINISHES

- 1 - WALL, METAL PANELS
Metallic finish
- 2 - WALL, BRICK
Red brick
- 3 - WALL, METAL SIDING
Horizontal corrugated metal
- 3a - WALL, METAL SIDING
Vertical metal
- 4 - WALL, CONCRETE
Exposed concrete, painted
- 5 - ROOF, METAL
Corrugated metal
- 6 - DECORATIVE METAL PANEL
Prefabricated metal, painted
- 7 - CORNICE
Prefabricated metal, painted
- 8 - FASCIA
Prefabricated metal, painted
- 9 - COLUMN
Steel, filled with concrete
- 10 - WINDOW
Aluminum Colour Black / Dark gray
- 11 - DOOR LEAF
Metal, painted
- 11 - DOOR FRAME
Metal, Painted to match windows
- 12 - RAIN WATER LEADER + GUTTER
Pre-finished metal
- 13 - FLASHING
Pre-finished metal
- 14 - PLANTER
Pre-finished metal
- 15 - WINDOW SILL
Concrete

1 TENNYSOON AVE ELEVATION [EAST]
Scale: 1:100



REVISIONS:

ISSUED FOR
DEVELOPMENT PERMIT
AUG 01, 2017

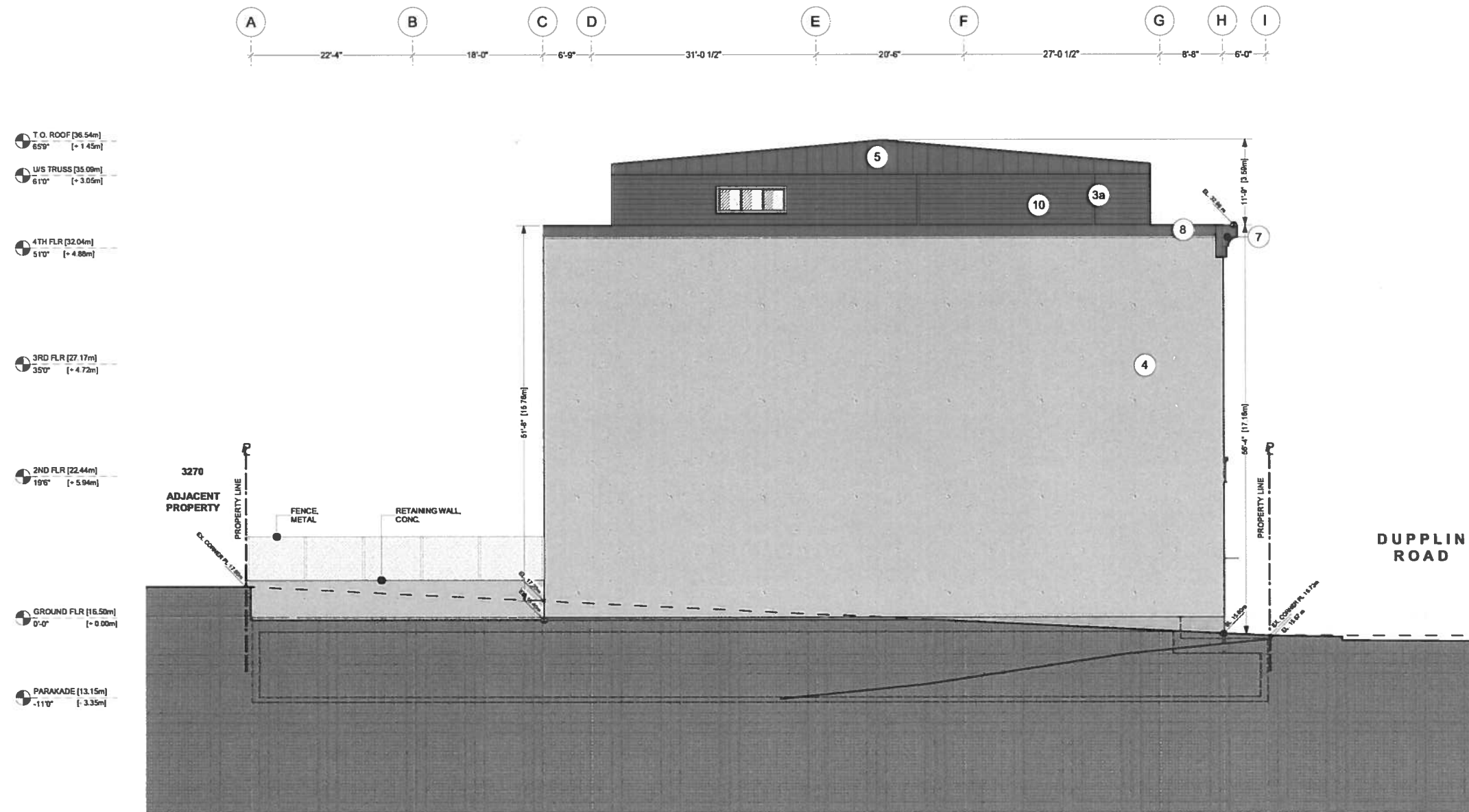
A 8/01/17 ISSUED FOR D.P.
ISSUES:

COPYRIGHT RESERVED:
THE COPYRIGHT TO THIS DRAWING AND ITS CONTENTS
IS RESERVED, AND REMAINS AT ALL TIMES THE
EXCLUSIVE PROPERTY OF BONI-MADDISON ARCHITECTS,
AND SHALL NOT BE COPIED, MODIFIED, OR REPRODUCED
WITHOUT THE EXPRESSED WRITTEN CONSENT OF
BONI-MADDISON ARCHITECTS
DIMENSIONS:
THE CONTRACTOR SHALL VERIFY ALL DIMENSIONS, AND
IMMEDIATELY REPORT ANY ERRORS AND/OR OMISSIONS
DO NOT SCALE DRAWINGS

BONI • MADDISON
Architects
3732 West Broadway
Vancouver, B.C., V6R 2C1
T: 604 688 5894
F: 604 688 5899
E: info@bonimaddison.com

RECEIVED
AUG 02 2017
PLANNING DEPT.
DISTRICT OF SAANICH

PROJECT: 472 + 476 DUPPLIN ROAD SAANICH, B.C.	
TITLE: ELEVATION [NORTH]	
DRWN: DD	DRAWING N°: A4.3
SCALE: 1:200	
JOB N°: 15-49	
DATE: OCT 27 2015	REV N°:



EXTERIOR FINISHES

- 1 - WALL, METAL PANELS
Metallic finish
- 2 - WALL, BRICK
Red brick
- 3 - WALL, METAL SIDING
Horizontal corrugated metal
- 3a - WALL, METAL SIDING
Vertical metal
- 4 - WALL, CONCRETE
Exposed concrete, painted
- 5 - ROOF, METAL
Corrugated metal
- 6 - DECORATIVE METAL PANEL
Prefabricated metal, painted
- 7 - CORNICE
Prefabricated metal, painted
- 8 - FASCIA
Prefabricated metal, painted
- 9 - COLUMN
Steel, filled with concrete
- 10 - WINDOW
Aluminum Colour Black / Dark gray
- 11 - DOOR LEAF
Metal, painted
- 11 - DOOR FRAME
Metal, Painted to match windows
- 12 - RAIN WATER LEADER + GUTTER
Pre-finished metal
- 13 - FLASHING
Pre-finished metal
- 14 - PLANTER
Pre-finished metal
- 15 - WINDOW SILL
Concrete

T.O. ROOF [36.54m]
65'9" [~1.45m]

U/S TRUSS [35.09m]
61'0" [~3.05m]

4TH FLR [32.04m]
51'0" [~4.88m]

3RD FLR [27.17m]
35'0" [~4.72m]

2ND FLR [22.44m]
19'6" [~5.94m]

GROUND FLR [16.52m]
0'-0" [~0.00m]

PARAKADE [13.15m]
-11'0" [~3.35m]

1 TENNYSON AVE ELEVATION [EAST]
Scale: 1:100



REVISIONS:

ISSUED FOR
DEVELOPMENT PERMIT
AUG 01, 2017

A 8/01/17 ISSUED FOR D.P.
ISSUES:

COPYRIGHT RESERVED:
THE COPYRIGHT TO THIS DRAWING AND ITS CONTENTS
IS RESERVED, AND REMAINS AT ALL TIMES THE
EXCLUSIVE PROPERTY OF BONI-MADDISON ARCHITECTS,
AND SHALL NOT BE USED, MODIFIED, OR REPRODUCED
WITHOUT THE EXPRESSED WRITTEN CONSENT OF
BONI-MADDISON ARCHITECTS

DIMENSIONS:
THE CONTRACTOR SHALL VERIFY ALL DIMENSIONS, AND
IMMEDIATELY REPORT ANY ERRORS AND/OR OMISSIONS
DO NOT SCALE DRAWINGS

BONI • MADDISON
Architects

3732 West Broadway
Vancouver, B.C., V6R 2C1
T: 604 688 5894
F: 604 688 5899
E: info@bonimaddison.com

PROJECT:
472 + 476 DUPPLIN ROAD
SAANICH, B.C.

TITLE:
ELEVATION [WEST]

DRAWN:	DD	DRAWING NO.:	A4.4
SCALE:	1:200		
JOB NO.:	15-49		
DATE:	OCT 27 2016	REV NO.:	

RECEIVED
AUG 02 2017
PLANNING DEPT.
DISTRICT OF SAANICH