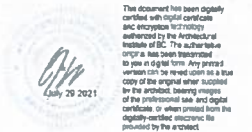


Seal



Consultants

Key plan



Issued for

- 1 16 DEC 2019 ISSUED FOR DP
- 3 22 SEP 2020 ISSUED FOR DP REV 1
- 5 12 FEB 2021 ISSUED FOR DP REV 2
- 6 28 JUL 2021 ISSUED FOR DP REV 3

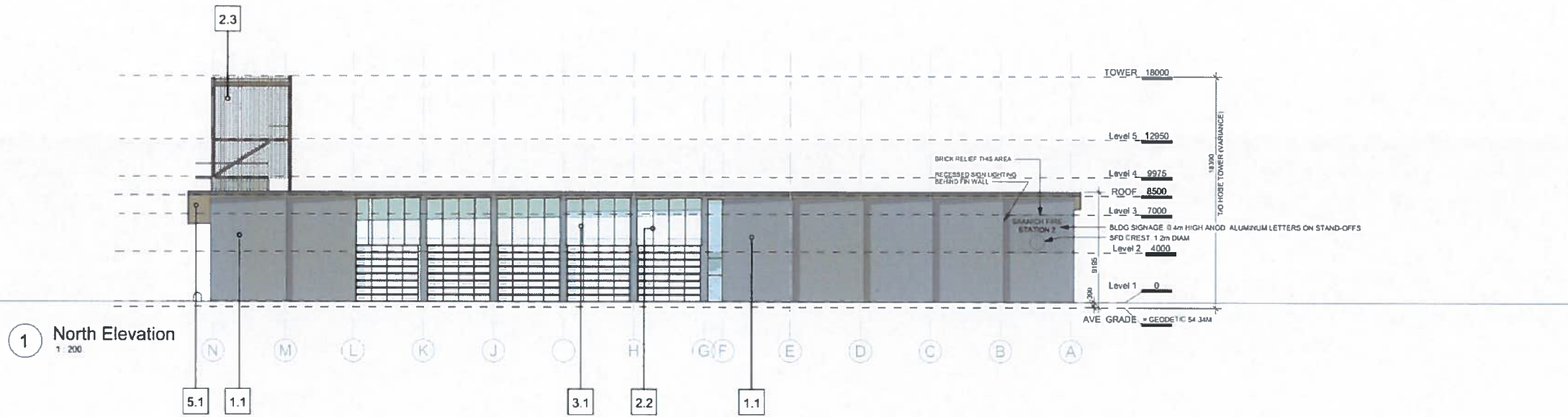
Project title
Saanich Fire Station #2

Client
District of Saanich
Site address
4595 Elk Lake Drive, Saanich BC

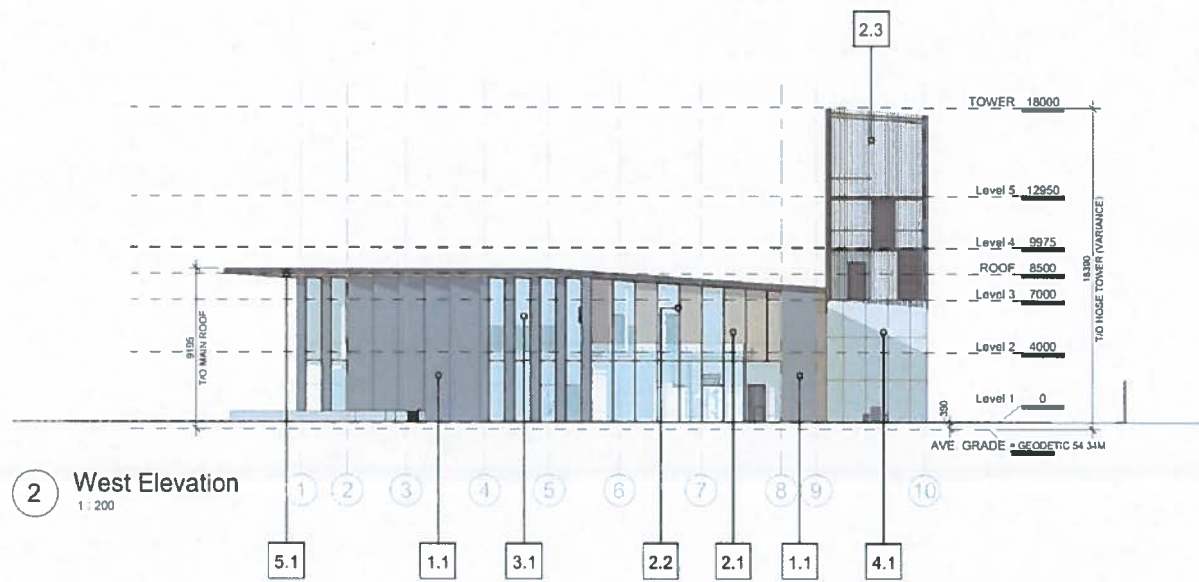
Sheet title
BUILDING ELEVATIONS

Date Printed 7/28/2021 4:47:04
Sheet number PMvision number 6

A301



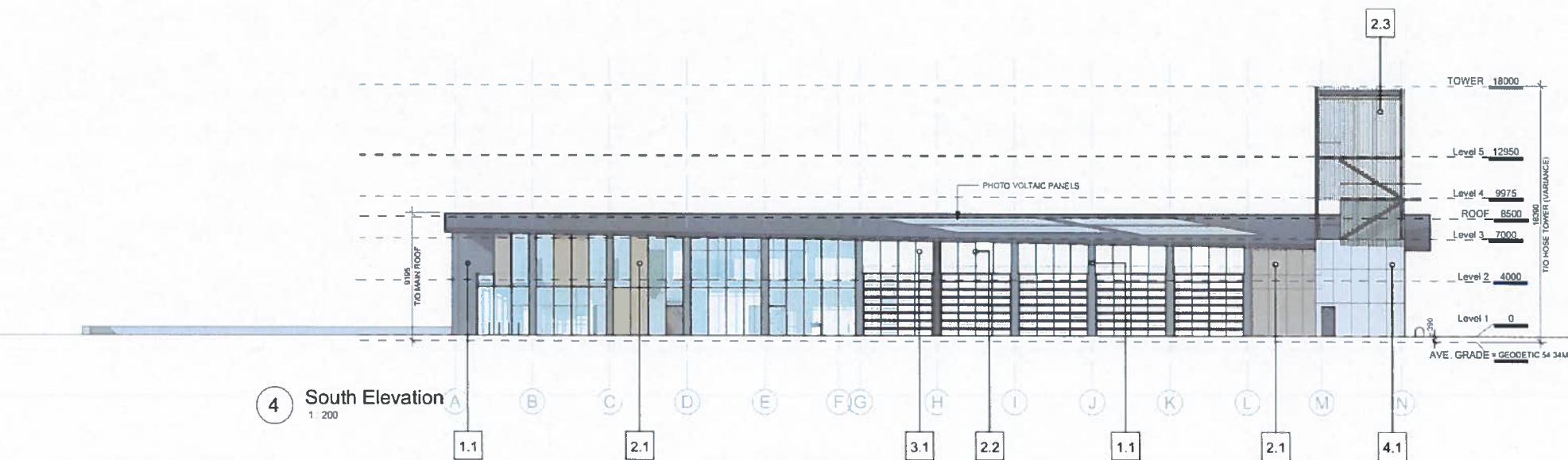
1 North Elevation
1:200



2 West Elevation
1:200



3 East Elevation
1:200



4 South Elevation
1:200

MATERIAL FINISHES:

- 1.1 - MASONRY
PACIFIC CLAY - FULL BRICK VELOUR TEXTURE - DARK IRON SPOT
- 2.1 - METAL CLADDING - COMPOSITE METAL
ALUCOBOND - COPPER METAL COOL 30
- 2.2 - WINDOW MULLION
CLEAR ANODIZED
- 2.3 - METAL SCREEN - GALVANIZED STEEL GRATING
- 3.1 - DOUBLE AND TRIPLE GLAZE WINDOWS
- 4.1 - EXPOSED CONCRETE
- 5.1 - WOOD SOFFIT - CLT
WHITE WASH-SINGLE COAT

