

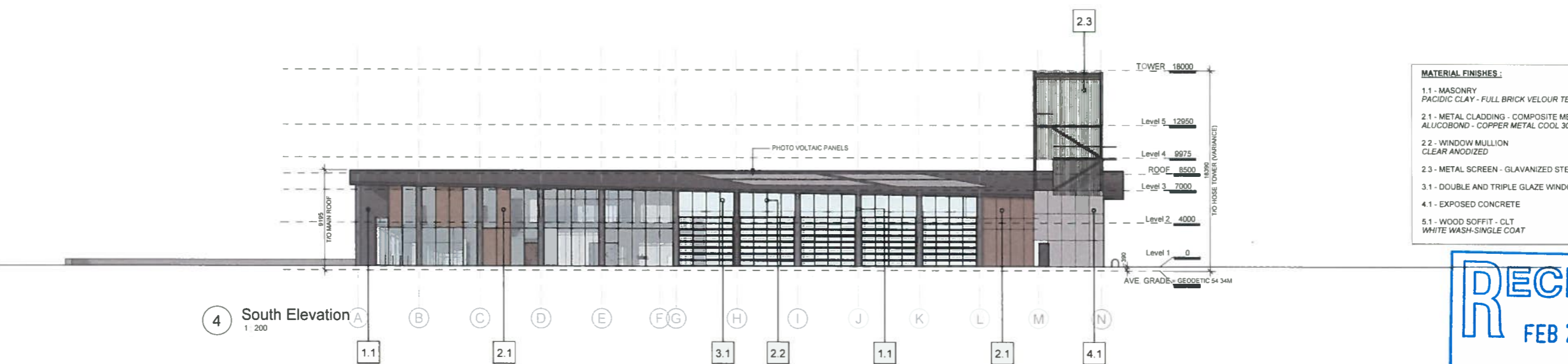
1 North Elevation  
1:200



2 West Elevation  
1:200



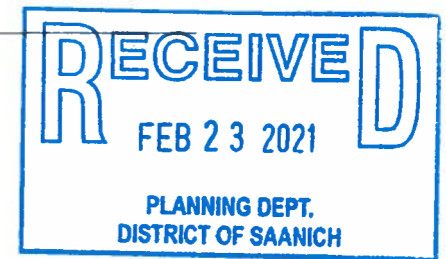
3 East Elevation  
1:200



4 South Elevation  
1:200

**MATERIAL FINISHES:**

- 1.1 - MASONRY  
PACIFIC CLAY - FULL BRICK VELOUR TEXTURE - DARK IRON SPOT
- 2.1 - METAL CLADDING - COMPOSITE METAL  
ALUCOBOND - COPPER METAL COOL 30
- 2.2 - WINDOW MULLION  
CLEAR ANODIZED
- 2.3 - METAL SCREEN - GALVANIZED STEEL GRATING
- 3.1 - DOUBLE AND TRIPLE GLAZE WINDOWS
- 4.1 - EXPOSED CONCRETE
- 5.1 - WOOD SOFFIT - CLT  
WHITE WASH-SINGLE COAT



2	ISSUED FOR DP	22 SEP 2020
1	REV 1	16 DEC 2019
#	DESCRIPTION	DATE

This document has been digitally certified with digital certificates and encryption technology authorized by the Government of BC. The authentication code for this document is 1720210101. This document is the property of HCM A and should not be distributed outside of the project. Any person who uses this document without the express written consent of HCM A is liable for any damages. The digital certificate is valid until 17/01/2021.

**Saanich Fire Station #2**

4595 Elk Lake Drive, Saanich BC

PROJECT #: 18056

**BUILDING ELEVATIONS**

**A301**