



hema
architecture + design
205 - 26 Bastion Square 250.382.6650
Victoria BC V8W 1H9 hema.ca

©2021 Copyright reserved. These drawings and the design contained therein or which may be inferred therefrom are, and at all times remain, the exclusive property of hema architecture + design. hema holds the copyright and ownership in the said drawings, which cannot be used for any purpose without the express written consent of hema.

Seal



Consultants

Key plan



Issued for

- 1 16 DEC 2019 ISSUED FOR DP
- 3 22 SEP 2020 ISSUED FOR DP REV 1
- 5 12 FEB 2021 ISSUED FOR DP REV 2
- 6 28 JUL 2021 ISSUED FOR DP REV 3
- 7 6 JAN 2022 ISSUED FOR DP REV 4
- 10 5 APR 2022 ISSUED FOR DP REV 5

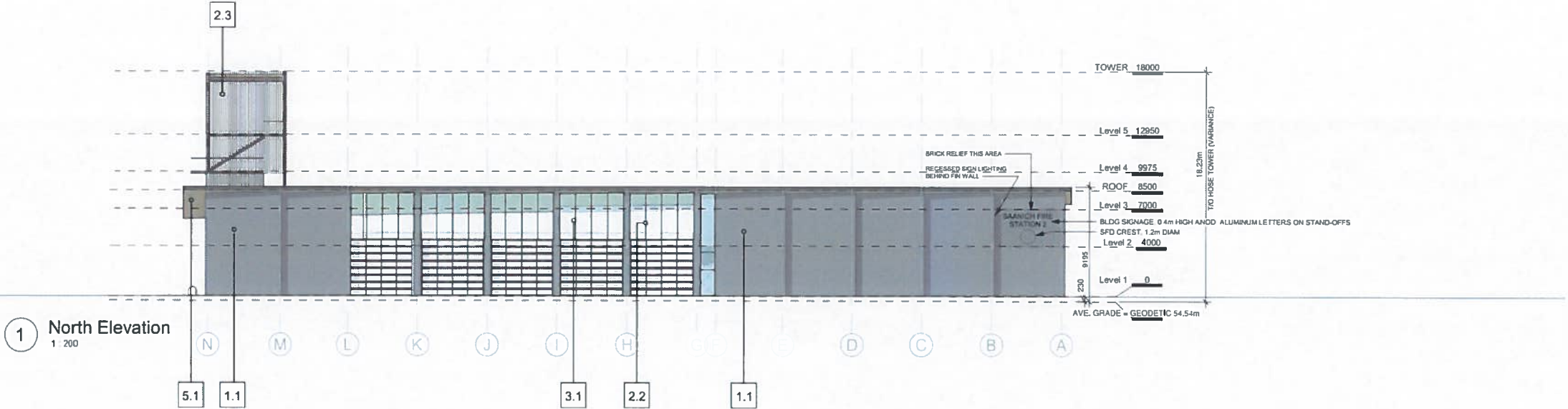
Project title
Saanchi Fire Station #2

Client
District of Saanich

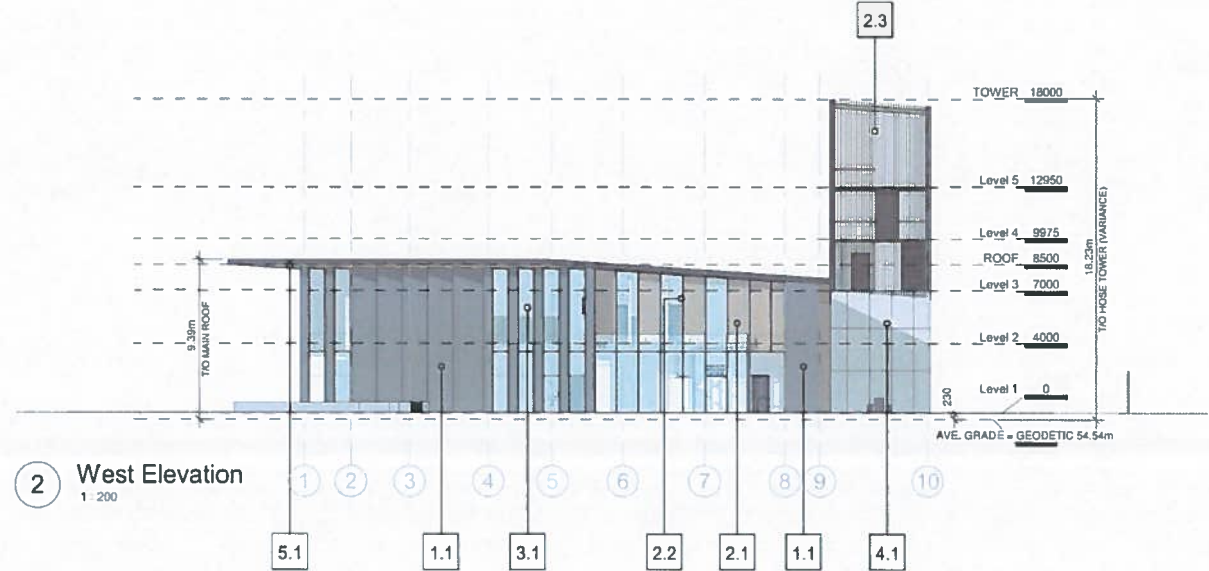
Site address
4595 Elk Lake Drive, Saanich BC

Sheet title
BUILDING ELEVATIONS

Date Printed 4/5/2022 6:36:58 PM
Sheet number Revision number 10



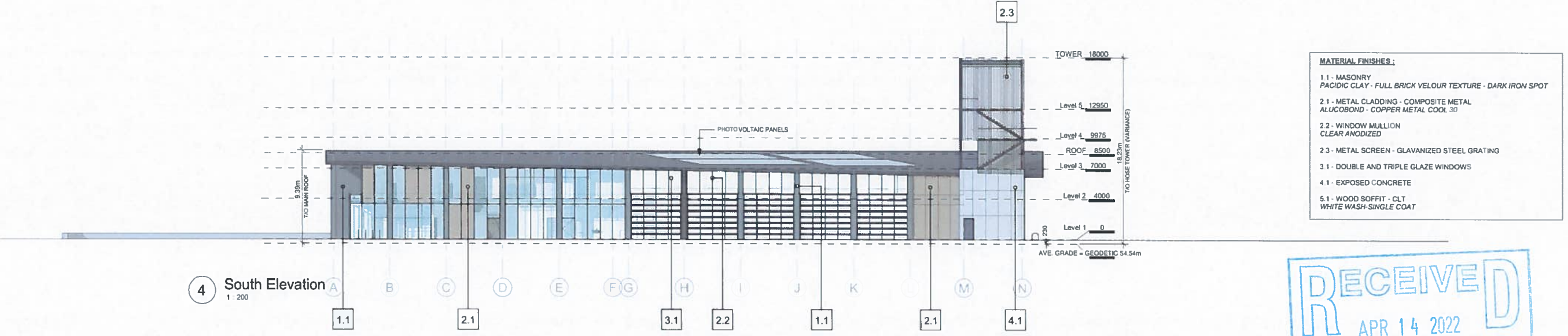
1 North Elevation
1:200



2 West Elevation
1:200



3 East Elevation
1:200



4 South Elevation
1:200

MATERIAL FINISHES:

- 1.1 - MASONRY
PACIFIC CLAY - FULL BRICK VELOUR TEXTURE - DARK IRON SPOT
- 2.1 - METAL CLADDING - COMPOSITE METAL
ALUCOBOND - COPPER METAL COOL 30
- 2.2 - WINDOW MULLION
CLEAR ANODIZED
- 2.3 - METAL SCREEN - GALVANIZED STEEL GRATING
- 3.1 - DOUBLE AND TRIPLE GLAZE WINDOWS
- 4.1 - EXPOSED CONCRETE
- 5.1 - WOOD SOFFIT - CLT
WHITE WASH - SINGLE COAT

