

- LINE TYPE LEGEND**
- Property line
 - Extent of Roof, above
 - Extent of Parkade, below
- EXISTING PLANT LEGEND**
(Refer to Arbores Report and Tree Retention & Removal Plan for full details and management strategies.)
- Existing Tree to be retained
 - Critical Root Zone (CRZ)
 - Tree Tag #
 - Tree Crown Spread
 - Existing Tree to be removed
 - Tree Tag #

- MATERIALS LEGEND**
- Cast in Place Concrete
 - Special Paving - Heritage Building
 - Unit Paving - Pedestrian
 - Aggregate Surfacing
 - Rain Garden Area
 - Planting Area
 - Lawn
 - Restoration Planting
 - 1800m Wood Fence
 - Guard Rail Refer to Architecture
 - Concrete Retaining Wall

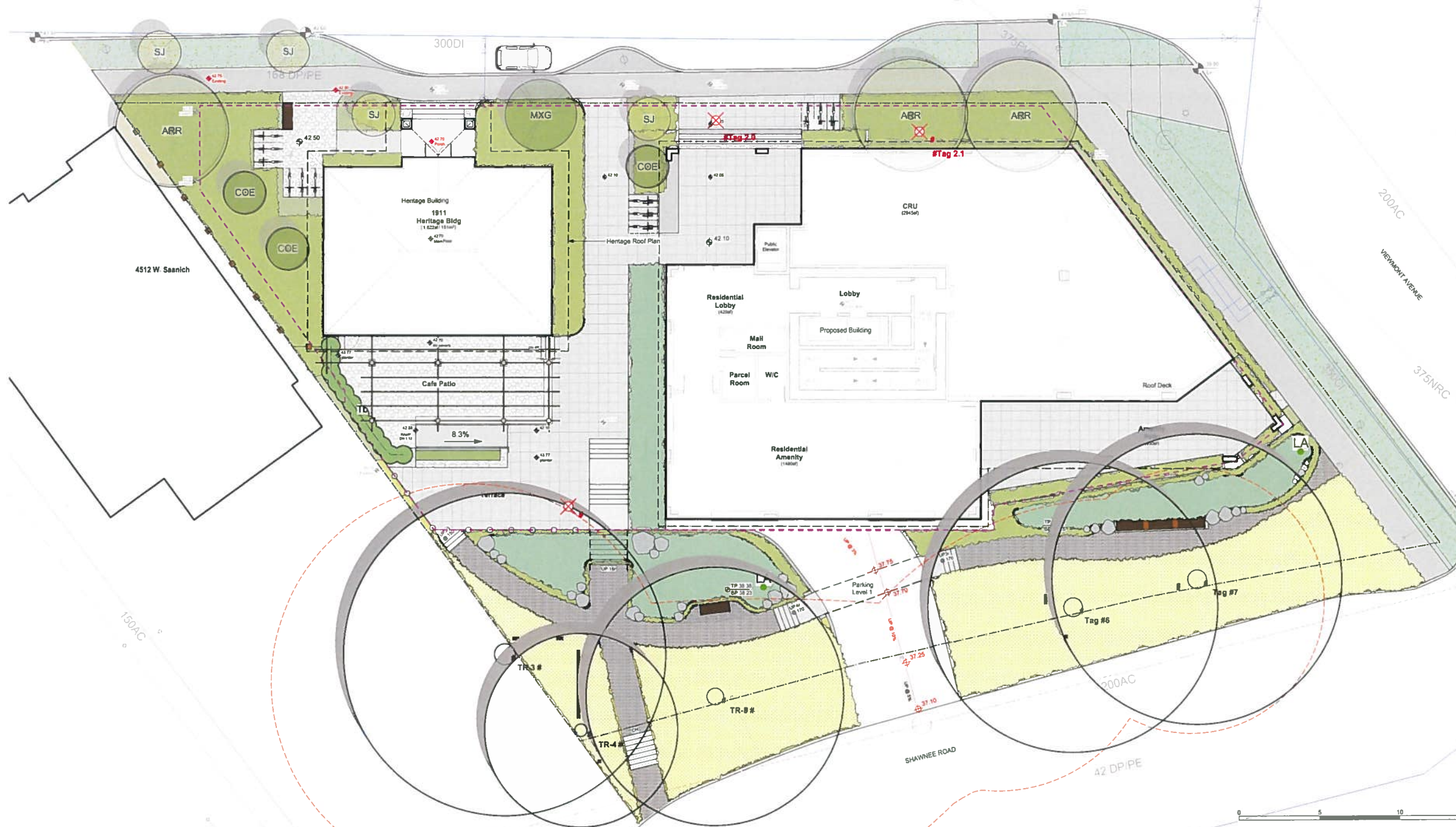
- SITE FURNISHINGS LEGEND**
- Bicycle Rack, 6 Bicycle capacity
 - Bench & Table
 - Planter
 - Landscape Boulder
 - Pergola
 - Stone Masonry Wall



RECEIVED
MAY 13 2022
PLANNING DEPT.
DISTRICT OF SAANICH

ALL DRAWINGS TO BE READ IN ASSOCIATION WITH CONTRACT SPECIFICATIONS.

2	REZONING/ODP
1	Schematic Design
Rev No	Description
Project	West Saanich Mixed U 4512 W. Saanich Rd Saanich, BC
Sheet Title	Landscape Materials - Level
Project No.	
Drawing File	
Date Issued	Man
Scale	
Drawn by	
Checked by	
Revision No.	Sheet n



RECEIVED
MAY 13 2022
PLANNING DEPT.
DISTRICT OF SAANICH



PLANT LIST

Sym	Qty	Botanical Name	Common Name	Schd.	Size / Plant Spacing	Bloom
ARR	3	Acer rubrum 'Red Sunset'	Red Sunset Red Maple		6.0m cal. b&b	Spring
COE	8	Cornus 'Eddie's White Wonder'	Flowering Dogwood		5.0m cal. b&b	Summer
MXG	1	Magnolia x 'Galaxy'	Galaxy Magnolia		5.0m cal. b&b	Fall
SJ	4	Styrax japonicus 'Emerald Pagoda'	Japanese Snowbell		5.0m cal. b&b	Spring
AGR	3	Acer ginnum	Pace-maker Maple		5.0m cal. b&b	Spring

HERITAGE SHRUBS & PERENNIALS 300 SQ M @ 2.0 / SQ M = 1050 PLANTS

Sym	Qty	Botanical Name	Common Name	Schd.	Size / Plant Spacing	Bloom
ARR	3	Aster novae-angliae	New England Aster		#1 pot	Fall
COE	8	Blackthorn spicata	Deer Fern		#1 pot	Spring
MXG	1	Brachyglottis greyi	Daisy Bush		Sp3, 30cm o.c.	Spring
SJ	4	Camellia x 'Fairy Bush'	Fairy Bush Camellia		#3 pot	Spring
AGR	3	Cistus salvifolius	Sage Leaf Rock Rose		#1 pot	Spring
		Echinacea purpurea	Purple Coneflower		#1 pot	Summer
		Geranium 'Brockledge'	Blue Geranium		#1 pot	Summer
		Helianthemum nummularium	Common Rockrose		#1 pot	Summer
		Hebe x 'Suevicus'	Lenten Rose		#1 pot	Spring
		Lonicera pileata	Pinet Honey-suckle		#1 pot	Spring
		Mahonia nervosa	Oregon Grape Holly		#1 pot 40cm o.c.	Spring
		Ornithogalum	Redwood Sorrel		Sp3	Spring
		Phlox subulata	Mock Orange		#1 pot	Spring
		Phlox subulata	Mock Phlox		#1 pot 40cm o.c.	Spring
		Pennisetum setaceum	Little Heath Penn		#1 pot	Spring
		Rhododendron x 'Cunningham's White'	Cunningham's White Rhododendron		#3 pot	Spring
		Rhododendron x 'Ramapo'	Ramapo Rhododendron		#2 pot	Spring
		Rudbeckia hirta 'Prism Glow'	Brown Eyed Susan 'Prism Glow'		#1 pot	Summer
		Santolobium hookerianum var. humilis	Hemlock Sweet Box		#1 pot	Spring
		Stachys byzantina	Lamb's Ear		#1 pot	Spring
		Taxus canadensis	English Yew		#3 pot	Spring
		Veronica spicata 'Thunderbird'	Evergreen Huckleberry		#3 pot	Spring
		Wisteria sinensis	Wistaria Vine		#1 pot	Spring

RESTORATION - SHRUBS & PERENNIALS - 75 SQ M @ 4.0 / SQ M = 300 PLANTS

Sym	Qty	Botanical Name	Common Name	Schd.	Size / Plant Spacing	Bloom
ARR	3	Achillea millefolium	Yarrow		#1 pot	Summer
COE	8	Aster novae-angliae	New England Aster		#1 pot	Fall
MXG	1	Asaphis maritima	Pearly Everlasting		#1 pot	Summer
SJ	4	Echinacea purpurea	Purple Coneflower		#1 pot	Summer
AGR	3	Erophylum lanatum	Woolly Sunflower		#1 pot	Spring
		Gaillardia xalton	Salal		#1 pot, 40cm o.c.	Spring
		Holodiscus discolor	Oceanspray		#2 pot	Spring
		Larix laricina x starbuckii 'White Spire'	White Spire Larch		#1 pot	Spring
		Rubus idaeus	Black-Eyed Susan		#1 pot	Summer
		Symphoricarpos alba	Snowberry		#1 pot	Spring
		Salvia 'sylvensis 'Manacur'	May Night Salvia		#1 pot	Spring

RESTORATION - GRASS - 225 SQ M

Type: Integrity Native Seed Mix
Seed Mix Composition:
40% Alaska Brome
10% Idaho Fescue
10% Tufted Hairgrass
10% Western Fescue
25% Blue Wildrye
5% Sandberg Bluegrass
Seeding Rate: 1.5kg/100 sq. M
Recommended seed time: Fall or spring, soil temperature min 10° Celsius
Supplier: Integrity Sales and Distributors

RAW GARDEN - SHRUBS & PERENNIALS - 120 SQ M @ 4.0 / SQ M = 480 PLANTS

Sym	Qty	Botanical Name	Common Name	Schd.	Size / Plant Spacing	Bloom
ARR	3	Brachyglottis greyi	Daisy Bush		Sp3, 30cm o.c.	Spring
COE	8	Carex obovata	Leatherleaf Sedge		#1 pot	Spring
MXG	1	Gaillardia xalton	Salal		#1 pot	Spring
SJ	4	Juncus 'Carmen's Grey'	Soft Common Rush		Sp3	Spring
AGR	3	Mahonia nervosa	Oregon Grape Holly		#1 pot 40cm o.c.	Spring
		Saxa purpurea 'Nana'	Dwarf Arctic Blue Leaf Willow		#1 pot	Spring
		Scorpus microcarpus	Panicle Bulrush		#1 pot	Spring
		Sorbus douglasii	Hardhack		#1 pot	Spring
		Carex obovata	Slough sedge		Sp3	Spring

ALL DRAWINGS TO BE READ IN ASSOCIATION WITH CONTRACT SPECIFICATIONS.

2 REVISIONS

rev no	description
1	Schematic Design
2	REVISIONS

project: West Saanich Mixed Use
4512 W Saanich Rd
Saanich, BC

sheet title: Planting Plan

project no:
drawing file:
date issued: Mar
scale:
drawn by:
checked by:
revision no.: