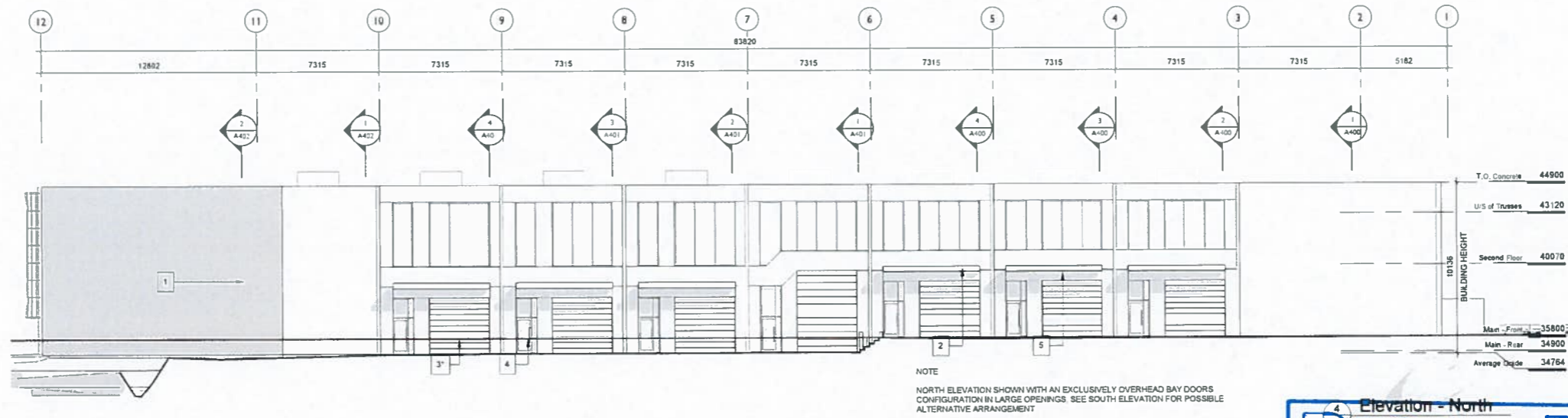
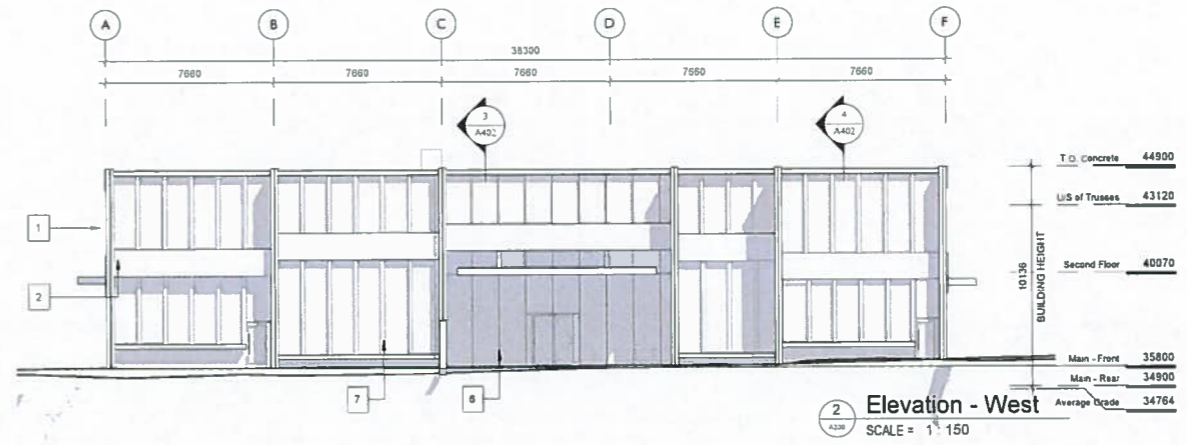
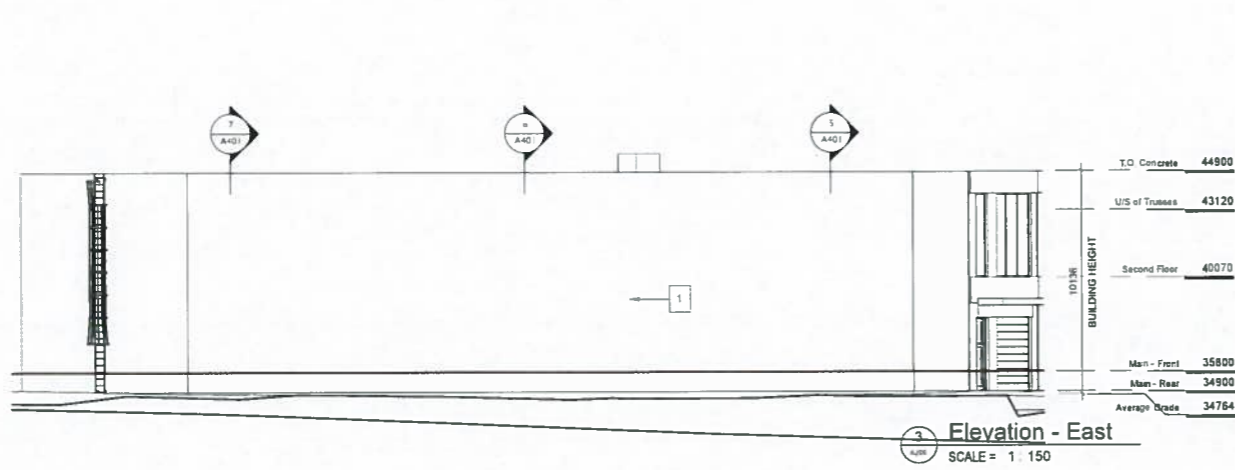


- MATERIALS KEY**
1. EXPOSED ARCHITECTURAL CONCRETE
 2. ACCENT PANEL - FIBROUS CEMENT - CHARCOAL
 3. INSULATED OVERHEAD BAY DOOR* - DARK GREY
 4. STOREFRONT ALUMINUM GLAZING SYSTEM* - DARK GREY
 5. ENTRY CANOPY - METAL CONSTRUCTION / WOOD SOFFIT
 6. THERMALLY BROKEN ALUMINUM CURTAIN WALL SYSTEM - DARK GREY
 7. WINDOW WALL SYSTEM - ALUMINUM OR VINYL AS DICTATED BY OPENING SIZE - DARK GREY
- NOTE: LARGE OPENINGS INDICATED WITH * ARE CONFIGURABLE AS STORE FRONT OR BAY DOOR PER TENANTS REQUIREMENTS



NO.	DESCRIPTION	DATE
B	DP Amendment - Revision	2020.07.08
A	Development Permit Amendment	2019.12.20

CASCADIA ARCHITECTS INC

Copyright reserved. This drawing is the property of Cascadia Architects Inc. It may be reproduced or transmitted in any form or by any means, electronic, mechanical, photocopying, recording, or by any information storage and retrieval system, without the prior written consent of Cascadia Architects Inc.

Project		VI Tech Park - Phase I	
Client		UVic Properties	
Sheet Name		Exterior Elevations	
Date	2020-07-08 9:02:26 AM	Project #	1912
Scale	As indicated	Revision	2020-07-08 B
Sheet #		A300	

