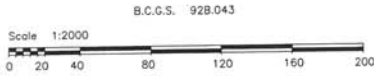
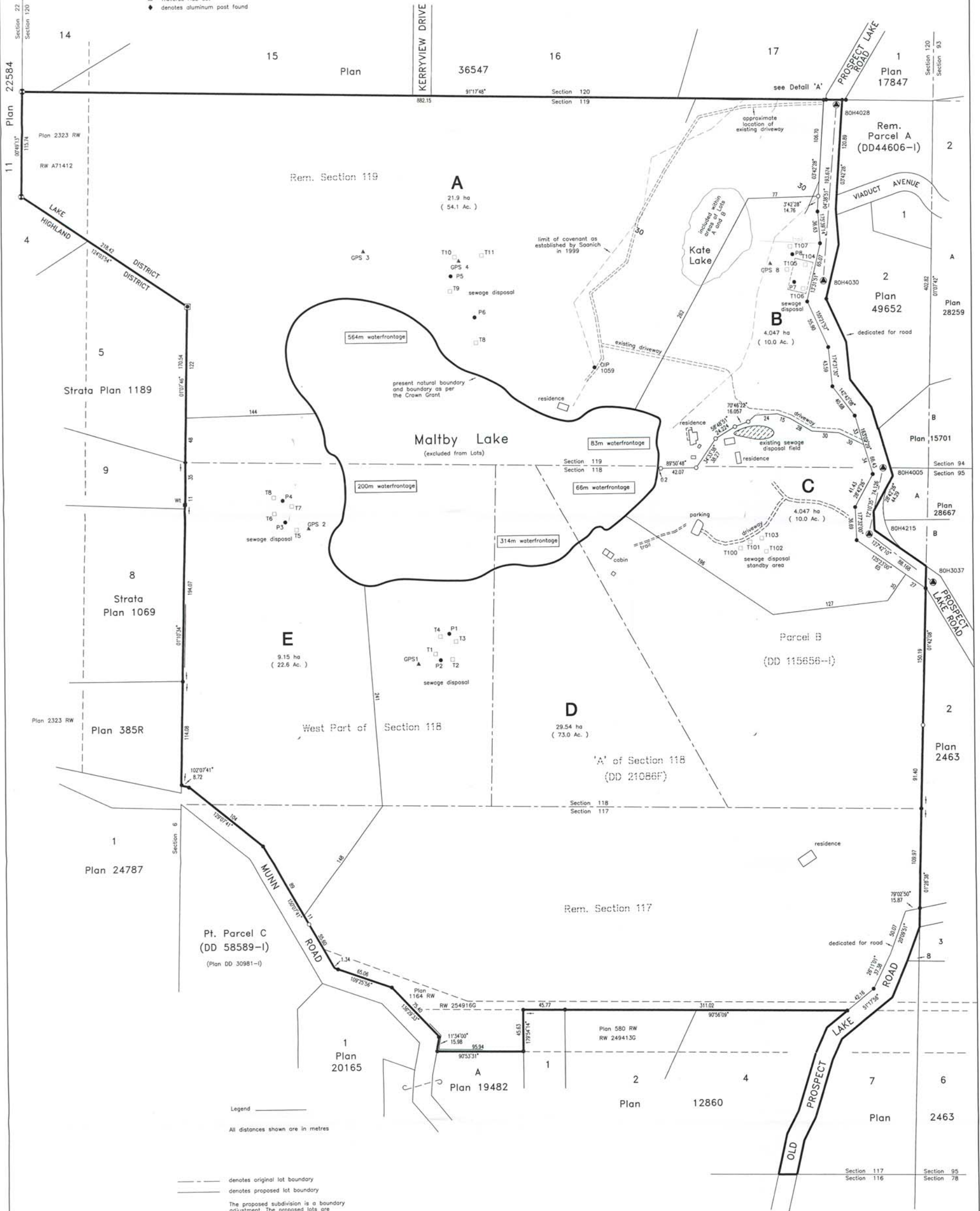


TENTATIVE PLAN OF SUBDIVISION OF THE REMAINDER OF SECTION 117, THE WEST PART OF SECTION 118, SHOWN COLOURED RED ON CROWN GRANT DEPOSITED UNDER DD 11623, PARCEL B (DD 115656-1) OF SECTION 118, PART OF SECTION 118, SHOWN OUTLINED IN RED ON PLAN MARKED 'A' AND DEPOSITED UNDER DD 21086F, AND THE REMAINDER OF SECTION 119, ALL OF THE LAKE DISTRICT



- Legend
- Standard Iron Post found
 - Standard Iron Post set
 - ⊙ Standard Capped Post found
 - Lead Plug found
 - ▲ Control Monument found
 - △ Traverse Hub set
 - ◆ denotes aluminum post found

December 10, 2007.
 revised January 4, 2008. creek added, legend amended
 revised January 28, 2008. Lot A/E boundary amended



January 28, 2009.

