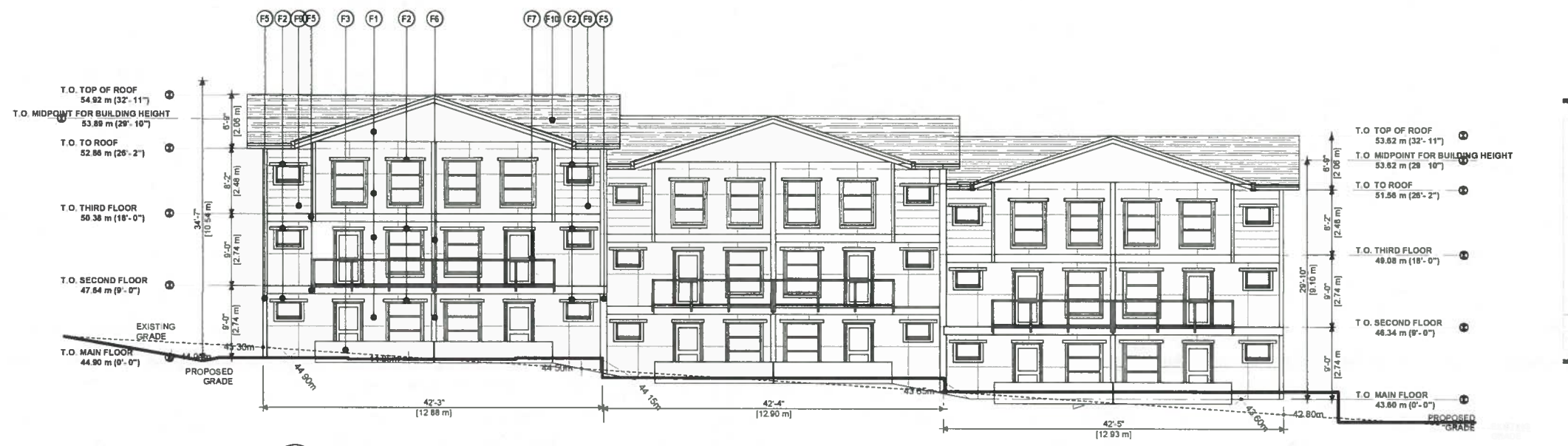


### EXTERIOR FINISHES & NOTES :

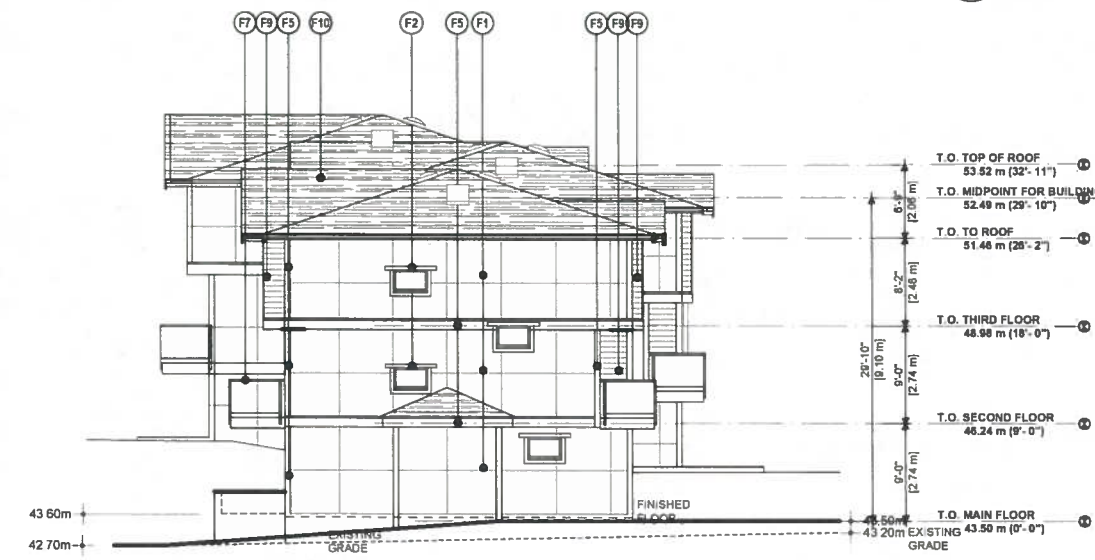
- (F1) HARDIE PANEL-NIGHT GRAY COLOUR
- (F2) CEDAR TRIM, 4" WIDTH
- (F3) STONE VENEER CLADDING - GRAY COLOUR
- (F4) WOOD VINYL FINISH - ROSEWOOD (WOODTONE - RUSTIC SERIES)
- (F5) HARDIE PANEL- IRON GRAY COLOUR W/ PRE-FINISHED METAL FLASHING
- (F6) CEDAR TRIM, 10" WIDTH
- (F7) PREFINISHED ALUMINUM GUARDRAILS w/ GLAZING
- (F8) 12" HARDIE PLANKS - IRON GRAY COLOUR W/ PRE-FINISHED METAL FLASHING
- (F9) 6" CEDAR SIDING W/ 1.5" X 1.5" CEDAR EDGE TRIM
- (F10) ASPHALT SHINGLES



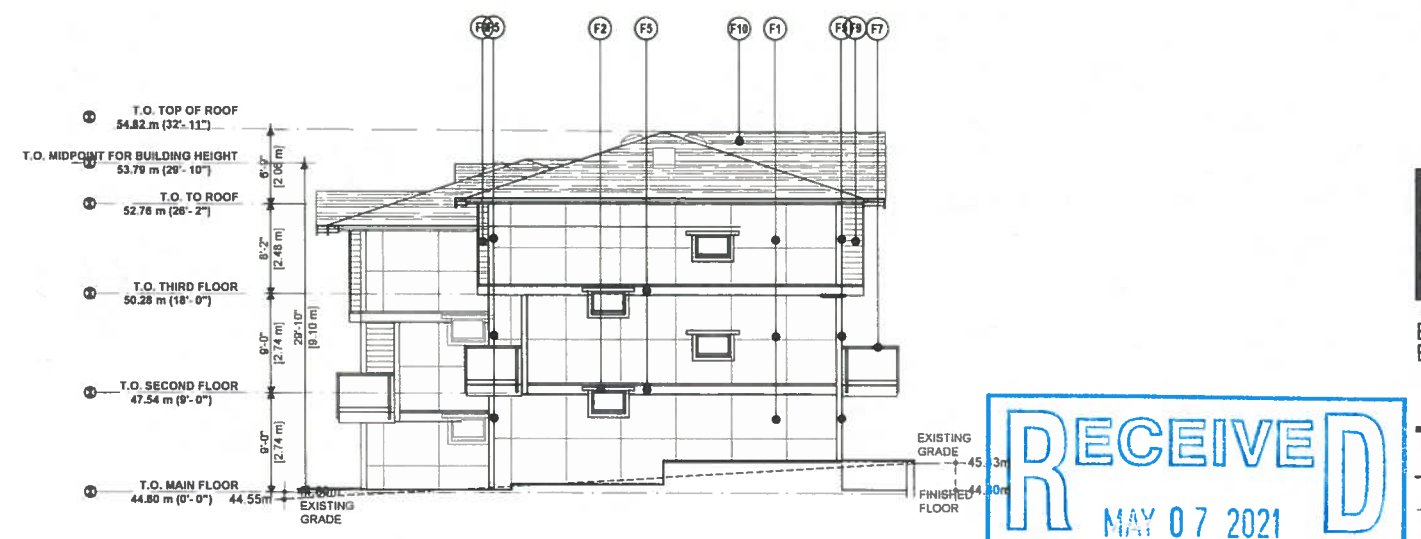
1 NORTH ELEVATION BLOCK 'B'  
A3.0 SCALE 1/8" = 1'-0"



2 SOUTH ELEVATION BLOCK 'B'  
A3.0 SCALE 1/8" = 1'-0"



3 EAST ELEVATION BLOCK 'B'  
A3.0 SCALE 1/8" = 1'-0"



4 WEST ELEVATION BLOCK 'B'  
A3.0 SCALE 1/8" = 1'-0"

lowe architect inc  
St. Columbia 1 2



8 TOWNHOUSES  
4104 Shelbourne Street  
ELEVATIONS BLOCK 'B'

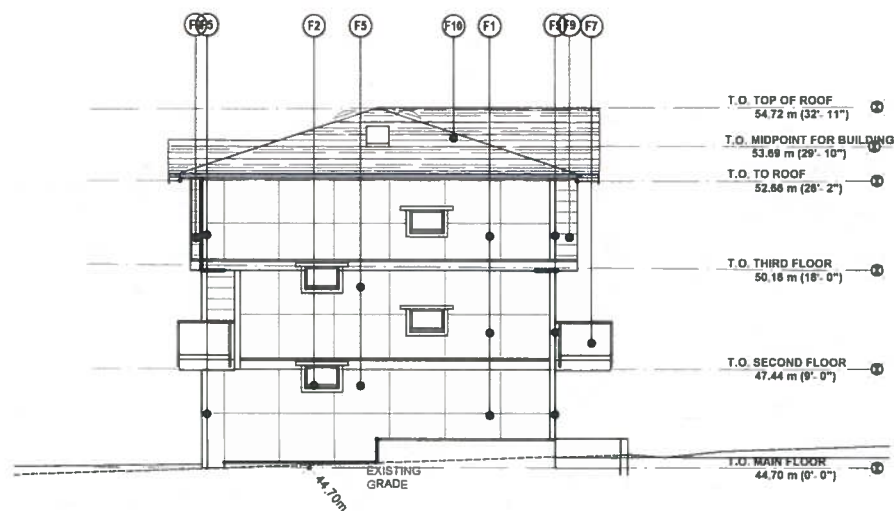


project no.: 20-641  
date: 20 APR, 2021 scale: AS NOTED  
checked by: LOWE drawn by: CF  
sheet no.

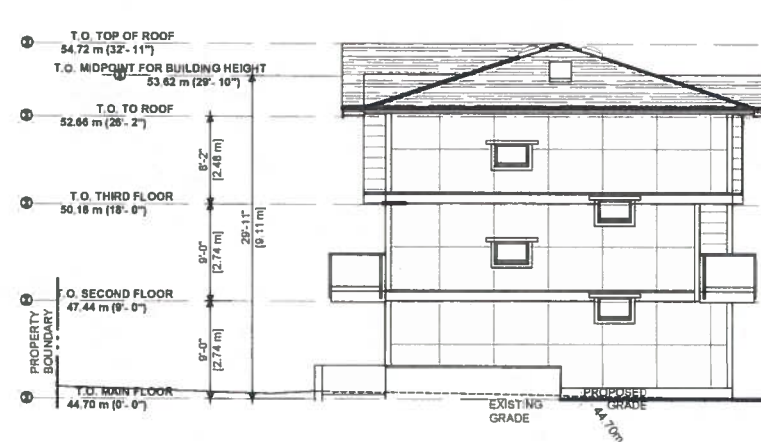
**A3.0**



1 WEST ELEVATION BLOCK 'A'  
SCALE 1/8" = 1'-0"



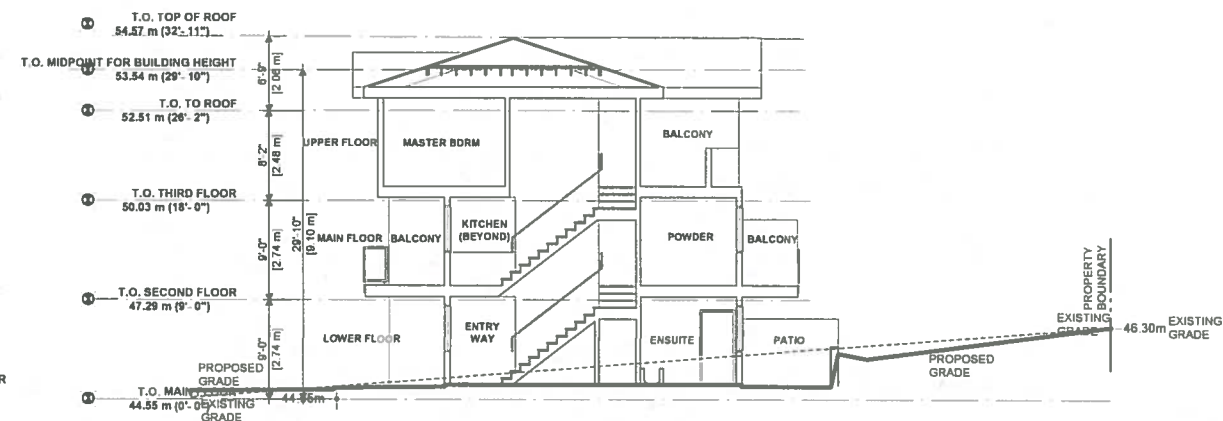
2 NORTH ELEVATION BLOCK 'A'  
SCALE 1/8" = 1'-0"



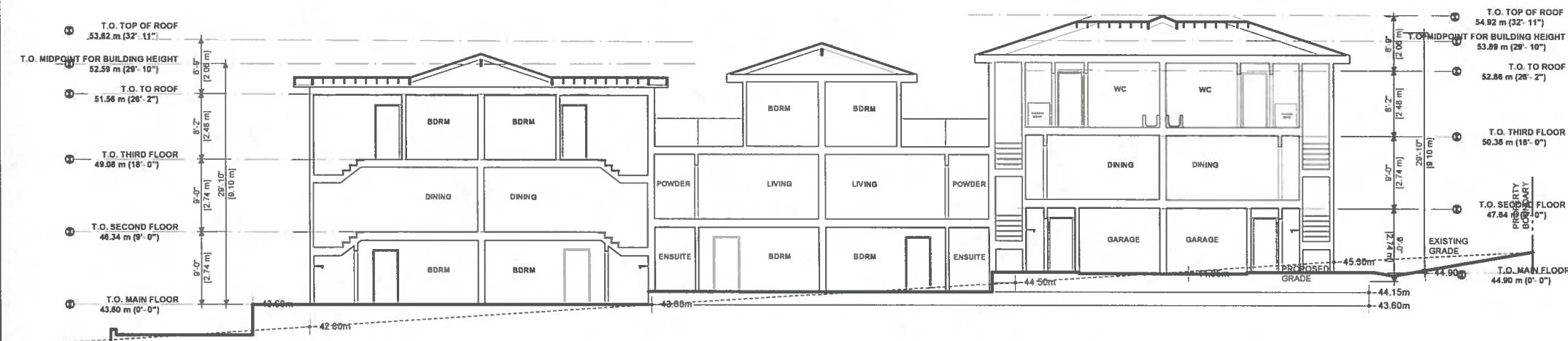
3 SOUTH ELEVATION BLOCK 'A'  
SCALE 1/8" = 1'-0"



4 EAST ELEVATION BLOCK 'A'  
SCALE 1/8" = 1'-0"



5 FRONT-BACK SECTION (TYPICAL ALL UNITS)  
SCALE 1/8" = 1'-0"



6 SECTION EAST-WEST THROUGH BLOCK 'B'  
SCALE 1/8" = 1'-0"

**EXTERIOR FINISHES & NOTES:**

- (F1) HARDBOARD - NIGHT GRAY COLOUR
- (F2) CEDAR TRIM, 4" WIDTH
- (F3) STONE VENEER CLADDING - GRAY COLOUR
- (F4) WOOD VINYL FINISH - ROSEWOOD (WOODTONE - RUSTIC SERIES)
- (F5) HARDBOARD - IRON GRAY COLOUR W/ PRE-FINISHED METAL FLASHING
- (F6) CEDAR TRIM, 10" WIDTH
- (F7) PREFINISHED ALUMINUM GUARDRAILS W/ GLAZING
- (F8) 12" HARDBOARD PLANKS - IRON GRAY COLOUR W/ PRE-FINISHED METAL FLASHING
- (F9) 8" CEDAR SIDING W/ 1 1/2" X 1 1/2" CEDAR EDGE TRIM
- (F10) ASPHALT SHINGLES

project north

issue / revisions

2	Re-Zoning & Dev. Submission	29 APRIL 21
1	REVIEW	10 MAR 20
No.	Issued / Revisions	Date

alan lowe architect inc.

#118 - 21 Erie St. 1 250 300 2888  
Victoria, British Columbia

seal



8 TOWNHOUSES

4104 Shelbourne Street

drawing title  
ELEVATIONS  
BLOCK 'A',  
AND SECTIONS  
BLOCK 'A' AND 'B'

project no.: 20-641

date 20 APR, 2021 scale AS NOTED

checked by LOWE drawn by CF

sheet no.

**A3.1**

