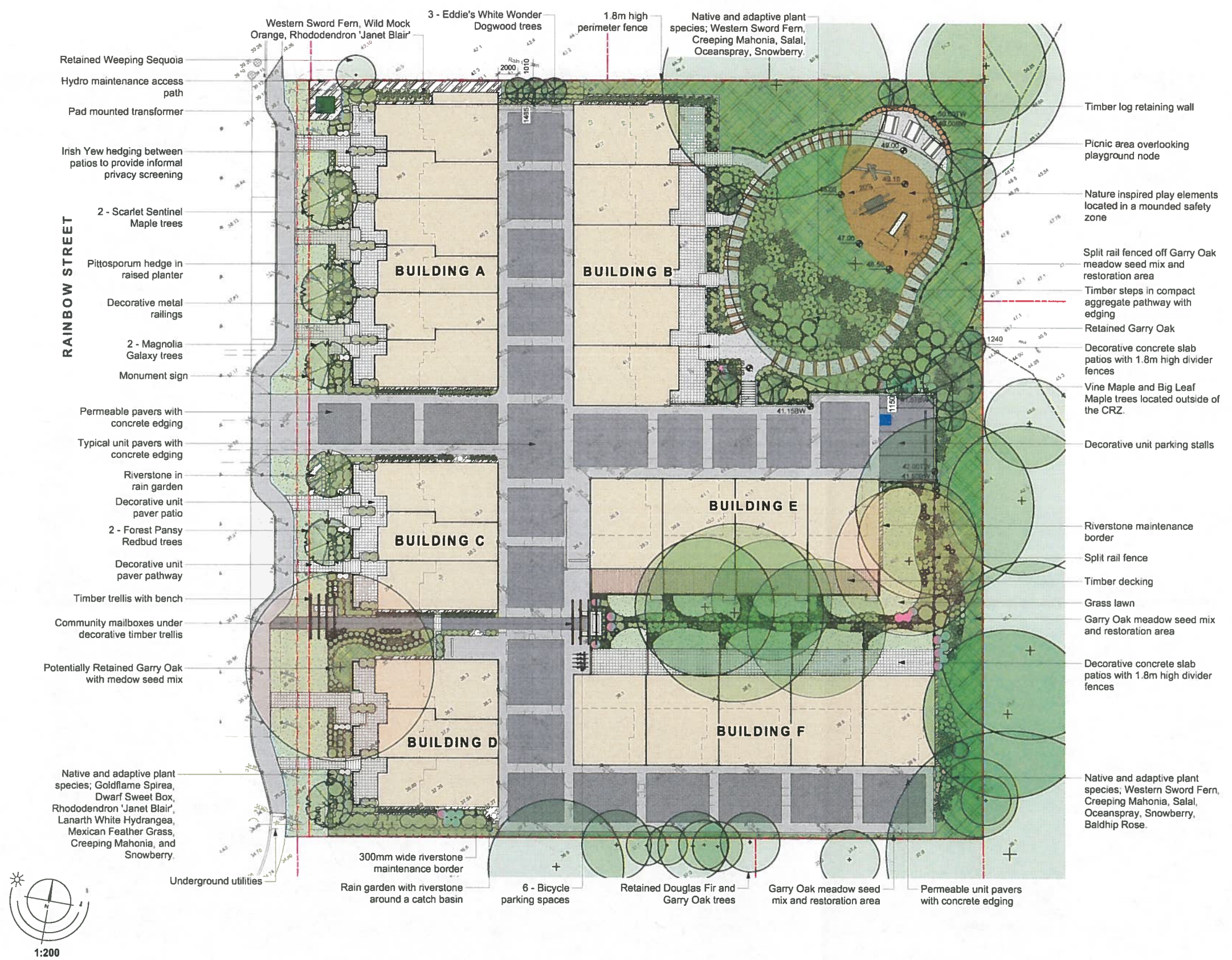
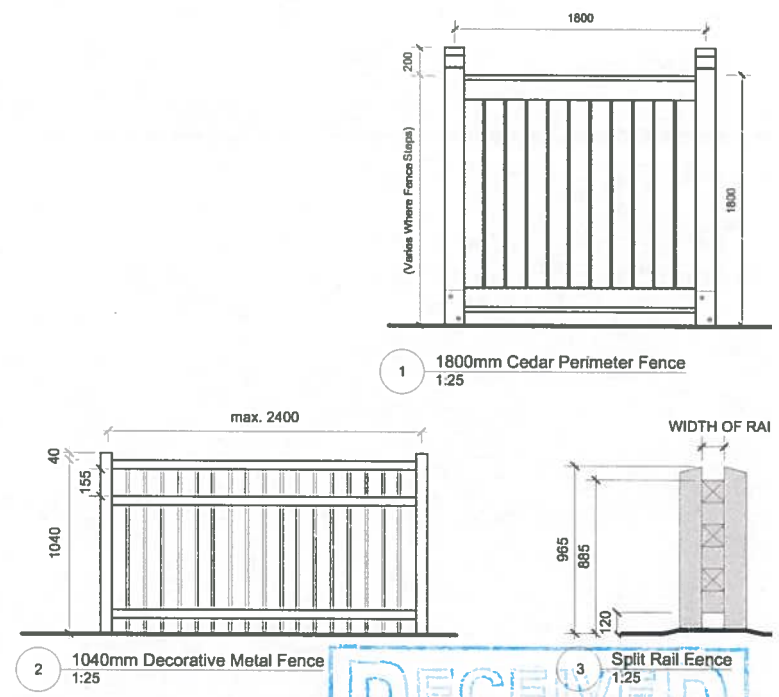


Recommended Nursery Stock

Trees	Botanical Name	Common Name	Size
18	Acer circinatum	Vine Maple	4cm ca
	Acer macrophyllum	Big Leaf Maple	4cm ca
	Acer rubrum 'Scarlet Sentinel'	Scarlet Sentinel Maple	6cm ca
	Cercis canadensis 'Forest Pansy'	Forest Pansy Redbud	6cm ca
	Cornus 'Eddie's White Wonder'	Eddie's White Wonder Dogwood	4cm ca
	Magnolia Galaxy	Galaxy Magnolia	6cm ca
Large Shrubs	Botanical Name	Common Name	Size
84	Holodiscus discolor	Oceanspray	#5 pot
	Philadelphus lewisii	Wild Mock Orange	#5 pot
	Rhododendron 'Janet Blair'	Rhododendron	#5 pot
	Taxus baccata 'Festigiata'	Irish Yew	#5 pot
Medium Shrubs	Botanical Name	Common Name	Size
269	Hydrangea macrophylla 'Lanarth White'	Lanarth White Hydrangea	#5 pot
	Mahonia aquifolium	Tall Oregon Grape	#5 pot
	Pterosporum tenuifolium 'Silver Magic'	Kohuhu	#5 pot
	Ribes sanguineum	Flowering Currant	#5 pot
	Rosa gymnocarpa	Baldhip Rose	#3 pot
	Symphoricarpos albus	Snowberry	#3 pot
Small Shrubs	Botanical Name	Common Name	Size
580	Arctostaphylos uva ursi 'Vancouver Jade'	Vancouver Jade Kinnickinnick	#1 pot
	Azalea japonica 'Hino White Dwarf'	Hino White Dwarf Azalea	#2 pot
	Gaultheria shallon	Salal	#1 pot
	Mahonia repens	Creeping Mahonia	#1 pot
	Sarcococca hookeriana var. humilis	Dwarf Sweet Box	#2 pot
	Spiraea 'Goldflame'	Goldflame Spirea	#2 pot
Perennials, Annuals and Ferns	Botanical Name	Common Name	Size
510	Blechnum spicant	Deer Fern	#1 pot
	Camassia quamash	Common Camas	#1 pot
	Festuca idahoensis	Ideho Fescue	#1 pot
	Helictotrichon sempervirens	Blue Oat Grass	#1 pot
	Polystichum munium	Sword Fern	#1 pot
	Stipa tenuissima	Mexican Feather Grass	#1 pot
Groundcovers	Botanical Name	Common Name	Size
29	Arctostaphylos uva ursi 'Vancouver Jade'	Vancouver Jade Kinnickinnick	#1 pot

Notes:
 1. All work to be completed to current CSLA Landscape Standards
 2. All soft landscape to be irrigated with an automatic irrigation system



Landscape Concept Plan - 4011 Rainbow Street

RECEIVED
 JUN 22 2021
 PLANNING DEPT.
 DISTRICT OF SAANICH
LADR LANDSCAPE ARCHITECTS

Project No: 2031 17 June 2021 #3-864 Ousens Ave. Victoria B.C. V8T 1M Phone: (250) 598-0105

Retained Weeping Sequoia
(ID# NT11, DBH: 15cm)

RAINBOW STREET

Removed Apple Tree
(ID# 78, DBH: 8-22cm)

Removed Garry Oak
(ID# 88, DBH: 83cm)

Potential Retained Garry Oak
(ID# 77, DBH: 112)

Removed Garry Oak
(ID# 76, DBH: 66cm)

Retained Douglas Fir and Garry Oak trees
(ID# NT 02, 03, 05 - NT 08, #543, 547, 942,
DBH: 16-46cm)

Removed Garry Oak
(ID# 99, DBH: 50cm)

Retained Garry Oak trees
(ID# 81,82, DBH: 24,48,79cm)

Retained Garry Oak
(ID# 83, DBH: 136cm)

Retained Garry Oak
(ID#NT9, DBH: 75cm)

Retained Garry Oak
(ID#100, DBH: 60cm)

Potential retained Garry Oak trees
(ID#85-86, DBH: 44,55,64cm)

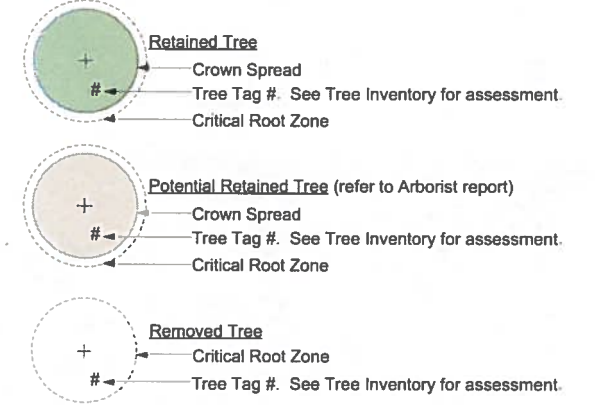
Retained Garry Oak
(ID#92, DBH: 58cm)

Retained Garry Oak
(ID#93, DBH: 80cm)

Retained Garry Oak trees
(ID#94 - NT7, DBH: 41-47cm)

Retained Garry Oak
(ID#95, DBH: 52-67cm)

Existing Trees Legend:



TREE TOTALS
 Total replacement trees required: 13
 Total replacement trees required (incl. TDB): 17
 Difference: 5 / 1

Inventory of Existing Trees

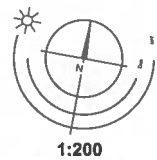
Tree ID	Common Name	Latin Name	DBH (cm)	Height (m)	Condition	Health	Structure	Remarks and Recommendations	Notes	Retention	Retention	Retention	Retention	Retention
76	Garry Oak	Quercus garryana	66	18.6	G	Good	Full	Administrative canopy. Well-maintained, well-treed landscape property. Good health in canopy.	Photo ref: 2011	Retained	Retained	Retained	Retained	Retained
77	Garry Oak	Quercus garryana	112	16.8	G	Good	Full	Shade tree. (reference notes with area on site) - Please consult with tree inventory on tree site.	Photo ref: 2011	To be Retained	Retained	Retained	Retained	Retained
78	Apple	Malus sp.	12	1.5	G	Good	Full	Small tree. (reference notes with area on site) - Please consult with tree inventory on tree site.	Photo ref: 2011	Retained	Retained	Retained	Retained	Retained
79	Apple	Malus sp.	15	1.5	G	Good	Full	Small tree. (reference notes with area on site) - Please consult with tree inventory on tree site.	Photo ref: 2011	Retained	Retained	Retained	Retained	Retained
80	Garry Oak	Quercus garryana	108	11.8	G	Good	Full	Shade tree. (reference notes with area on site) - Please consult with tree inventory on tree site.	Photo ref: 2011	Retained	Retained	Retained	Retained	Retained
81	Garry Oak	Quercus garryana	74	14.8	G	Good	Full	Shade tree. (reference notes with area on site) - Please consult with tree inventory on tree site.	Photo ref: 2011	Retained	Retained	Retained	Retained	Retained
82	Garry Oak	Quercus garryana	48	11.8	G	Good	Full	Shade tree. (reference notes with area on site) - Please consult with tree inventory on tree site.	Photo ref: 2011	Retained	Retained	Retained	Retained	Retained
83	Garry Oak	Quercus garryana	136	26.0	G	Good	Full	Shade tree. (reference notes with area on site) - Please consult with tree inventory on tree site.	Photo ref: 2011	Retained	Retained	Retained	Retained	Retained
84	Garry Oak	Quercus garryana	72	14.8	G	Good	Full	Shade tree. (reference notes with area on site) - Please consult with tree inventory on tree site.	Photo ref: 2011	Retained	Retained	Retained	Retained	Retained
85	Garry Oak	Quercus garryana	84	12.0	G	Good	Full	Shade tree. (reference notes with area on site) - Please consult with tree inventory on tree site.	Photo ref: 2011	To be Retained	Retained	Retained	Retained	Retained
86	Garry Oak	Quercus garryana	10	11.8	G	Good	Full	Shade tree. (reference notes with area on site) - Please consult with tree inventory on tree site.	Photo ref: 2011	To be Retained	Retained	Retained	Retained	Retained
87	Garry Oak	Quercus garryana	85	14.8	G	Good	Full	Shade tree. (reference notes with area on site) - Please consult with tree inventory on tree site.	Photo ref: 2011	Retained	Retained	Retained	Retained	Retained
88	Garry Oak	Quercus garryana	93	15.8	G	Good	Full	Shade tree. (reference notes with area on site) - Please consult with tree inventory on tree site.	Photo ref: 2011	Retained	Retained	Retained	Retained	Retained
89	Garry Oak	Quercus garryana	36	11.8	G	Good	Full	Shade tree. (reference notes with area on site) - Please consult with tree inventory on tree site.	Photo ref: 2011	Retained	Retained	Retained	Retained	Retained
90	Garry Oak	Quercus garryana	16	11.8	G	Good	Full	Shade tree. (reference notes with area on site) - Please consult with tree inventory on tree site.	Photo ref: 2011	Retained	Retained	Retained	Retained	Retained
91	Garry Oak	Quercus garryana	33	8.0	G	Good	Full	Shade tree. (reference notes with area on site) - Please consult with tree inventory on tree site.	Photo ref: 2011	Retained	Retained	Retained	Retained	Retained
92	Garry Oak	Quercus garryana	78	11.8	G	Good	Full	Shade tree. (reference notes with area on site) - Please consult with tree inventory on tree site.	Photo ref: 2011	Retained	Retained	Retained	Retained	Retained
93	Garry Oak	Quercus garryana	88	11.8	G	Good	Full	Shade tree. (reference notes with area on site) - Please consult with tree inventory on tree site.	Photo ref: 2011	Retained	Retained	Retained	Retained	Retained
94	Garry Oak	Quercus garryana	47	8.0	G	Good	Full	Shade tree. (reference notes with area on site) - Please consult with tree inventory on tree site.	Photo ref: 2011	Retained	Retained	Retained	Retained	Retained
95	Garry Oak	Quercus garryana	127	12.0	G	Good	Full	Shade tree. (reference notes with area on site) - Please consult with tree inventory on tree site.	Photo ref: 2011	Retained	Retained	Retained	Retained	Retained
96	Garry Oak	Quercus garryana	21	11.8	G	Good	Full	Shade tree. (reference notes with area on site) - Please consult with tree inventory on tree site.	Photo ref: 2011	Retained	Retained	Retained	Retained	Retained
97	Garry Oak	Quercus garryana	30	11.8	G	Good	Full	Shade tree. (reference notes with area on site) - Please consult with tree inventory on tree site.	Photo ref: 2011	Retained	Retained	Retained	Retained	Retained
98	Garry Oak	Quercus garryana	34	8.0	G	Good	Full	Shade tree. (reference notes with area on site) - Please consult with tree inventory on tree site.	Photo ref: 2011	Retained	Retained	Retained	Retained	Retained
99	Garry Oak	Quercus garryana	39	11.8	G	Good	Full	Shade tree. (reference notes with area on site) - Please consult with tree inventory on tree site.	Photo ref: 2011	Retained	Retained	Retained	Retained	Retained
100	Garry Oak	Quercus garryana	30	11.8	G	Good	Full	Shade tree. (reference notes with area on site) - Please consult with tree inventory on tree site.	Photo ref: 2011	Retained	Retained	Retained	Retained	Retained
101	Garry Oak	Quercus garryana	16	12.0	G	Good	Full	Shade tree. (reference notes with area on site) - Please consult with tree inventory on tree site.	Photo ref: 2011	Retained	Retained	Retained	Retained	Retained
102	Garry Oak	Quercus garryana	44	7.0	G	Good	Full	Shade tree. (reference notes with area on site) - Please consult with tree inventory on tree site.	Photo ref: 2011	Retained	Retained	Retained	Retained	Retained
103	Garry Oak	Quercus garryana	45	11.8	G	Good	Full	Shade tree. (reference notes with area on site) - Please consult with tree inventory on tree site.	Photo ref: 2011	Retained	Retained	Retained	Retained	Retained
104	Douglas Fir	Pseudotsuga mucronata	30	11.8	G	Good	Full	Shade tree. (reference notes with area on site) - Please consult with tree inventory on tree site.	Photo ref: 2011	Retained	Retained	Retained	Retained	Retained
105	Douglas Fir	Pseudotsuga mucronata	32	11.8	G	Good	Full	Shade tree. (reference notes with area on site) - Please consult with tree inventory on tree site.	Photo ref: 2011	Retained	Retained	Retained	Retained	Retained
106	Douglas Fir	Pseudotsuga mucronata	33	11.8	G	Good	Full	Shade tree. (reference notes with area on site) - Please consult with tree inventory on tree site.	Photo ref: 2011	Retained	Retained	Retained	Retained	Retained
107	Douglas Fir	Pseudotsuga mucronata	34	11.8	G	Good	Full	Shade tree. (reference notes with area on site) - Please consult with tree inventory on tree site.	Photo ref: 2011	Retained	Retained	Retained	Retained	Retained
108	Douglas Fir	Pseudotsuga mucronata	35	11.8	G	Good	Full	Shade tree. (reference notes with area on site) - Please consult with tree inventory on tree site.	Photo ref: 2011	Retained	Retained	Retained	Retained	Retained
109	Douglas Fir	Pseudotsuga mucronata	36	11.8	G	Good	Full	Shade tree. (reference notes with area on site) - Please consult with tree inventory on tree site.	Photo ref: 2011	Retained	Retained	Retained	Retained	Retained
110	Douglas Fir	Pseudotsuga mucronata	37	11.8	G	Good	Full	Shade tree. (reference notes with area on site) - Please consult with tree inventory on tree site.	Photo ref: 2011	Retained	Retained	Retained	Retained	Retained
111	Douglas Fir	Pseudotsuga mucronata	38	11.8	G	Good	Full	Shade tree. (reference notes with area on site) - Please consult with tree inventory on tree site.	Photo ref: 2011	Retained	Retained	Retained	Retained	Retained



Tree Preservation Plan - 4011 Rainbow Street



RAINBOW STREET



Recommended Nursery Stock

Trees	Botanical Name	Common Name	Size
18	Acer circinatum	Vine Maple	4cm cal.
	Acer macrophyllum	Big Leaf Maple	4cm cal.
	Acer rubrum "Scarlet Sentinel"	Scarlet Sentinel Maple	6cm cal.
	Cercis canadensis 'Forest Pansy'	Forest Pansy Redbud	6cm cal.
	Cornus 'Eddie's White Wonder'	Eddie's White Wonder Dogwood	4cm cal.
	Magnolia Galaxy	Galaxy Magnolia	6cm cal.

Tree Soil Depth Legend:

	0.75m Soil Depth
	1.0m Soil Depth

Tree Type	Minimum Soil Volume
Small Tree	8 Cubic Meters
Medium Tree	12 Cubic Meters
Large Tree	16 Cubic Meters

Soil Volume Compliance Table

Location	Area (m ²)	Depth (m)	Number of Trees	Volume Req. (m ³)	Total Volume Req. (m ³)	Total Volume on Site (m ³)	Compliance (Y / N)
1	53.4	0.75	3	8.0	24.0	40.1	Y
2	39	0.75	1	16.0	16.0	29.3	Y
3	35.2	0.75	1	16.0	16.0	28.4	Y
4	29.8	0.75	1	12.0	12.0	22.4	Y
5	27.8	0.75	1	12.0	12.0	20.9	Y
6	20.7	0.75	1	12.0	12.0	15.5	Y
7	79.2	0.75	1	8.0	8.0	59.4	Y
8	421	1	5	8.0	64.0	315.8	Y
9	12.9	0.75	1	8.0	8.0	9.7	Y
10	9.9	1	1	8.0	8.0	9.9	Y

Note: Preserve the native soil within the root zones of trees to be retained as directed by project arborist

Soil Volume Plan - 4011 Rainbow Street

