

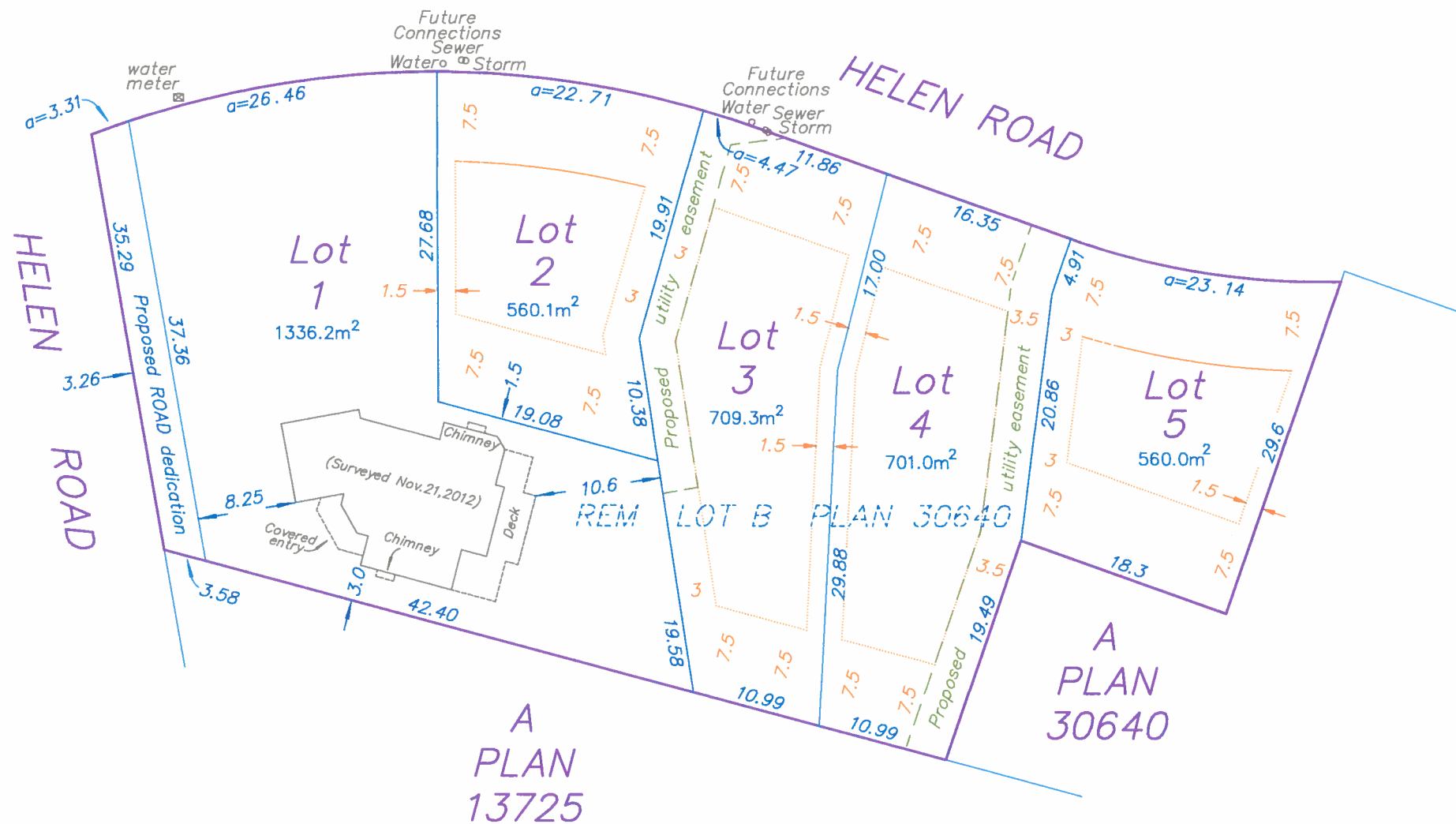
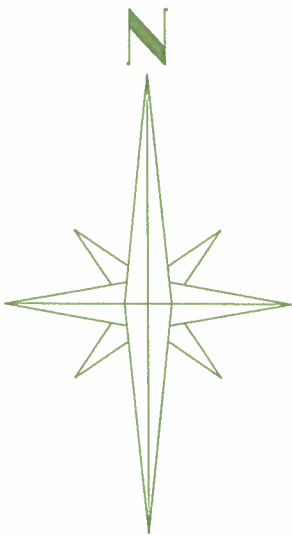
PLAN OF PROPOSED SUBDIVISION OF
LOT B, SECTION 16, VICTORIA DISTRICT,
PLAN 30640, EXCEPT PART IN PLAN
VIP84060 AND VIP84061.



NOTE: Lot dimensions and areas shown may vary upon completion of a comprehensive Legal Survey. This proposed lot configuration is for discussion purposes only.

The parcel is subject to charges:
Statutory Right of Way EL86754 & EM64018

Field survey dates: August, 2011
: November 21, 2012
: August 29, 2014
: October 9, 2015



Lot	Width	Depth	Area	B.E. Area	Zoning
1	23.86 m 78.27 ft	47.54 m 155.99 ft	1336.2 Sq.m. 14383 Sq.ft.		RS-8
2	18.38 m 68.31 ft	29.40 m 96.46 ft	560.1 Sq.m. 6029 Sq.ft.	196.5 Sq.m. 2115 Sq.ft.	RS-6
3	17.08 m 56.03 ft	47.72 m 156.55 ft	709.3 Sq.m. 7635 Sq.ft.	347.1 Sq.m. 3736 Sq.ft.	RS-6
4	17.08 m 56.03 ft	45.77 m 150.16 ft	701.0 Sq.m. 7545 Sq.ft.	336.1 Sq.m. 3618 Sq.ft.	RS-6
5	20.38 m 66.88 ft	26.47 m 86.86 ft	560.0 Sq.m. 6028 Sq.ft.	192.1 Sq.m. 2068 Sq.ft.	RS-6



File: 51-BAINS-MN10
Date: October 9, 2015
Island Land Surveying Ltd.
1-15 Cadillac Avenue
Victoria, B.C. V8Z 1T3
TEL 250.475.1515 FAX 250.475.1516
www.islandsurveying.ca

Zone	Front/Rear Yards	Side Yards	Lot Area	Lot Width
RS-6	Front Yard: 6.0m Rear Yard: 7.5m Front+Rear: 15.0m	Interior Side: 1.5m Exterior Side: 3.5m Sum of Sides: 4.5m	560 Sq.m.	16 m
RS-8	Front Yard: 6.0m Rear Yard: 7.5m Front+Rear: 15.0m	Interior Side: 1.5m Exterior Side: 3.5m Sum of Sides: 4.5m	665 Sq.m.	18 m