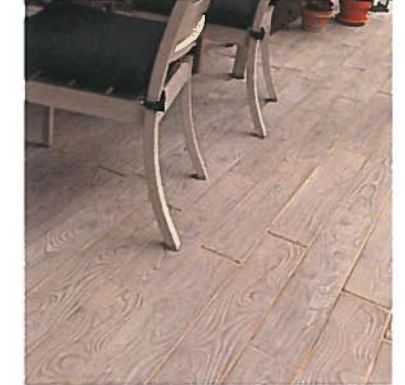
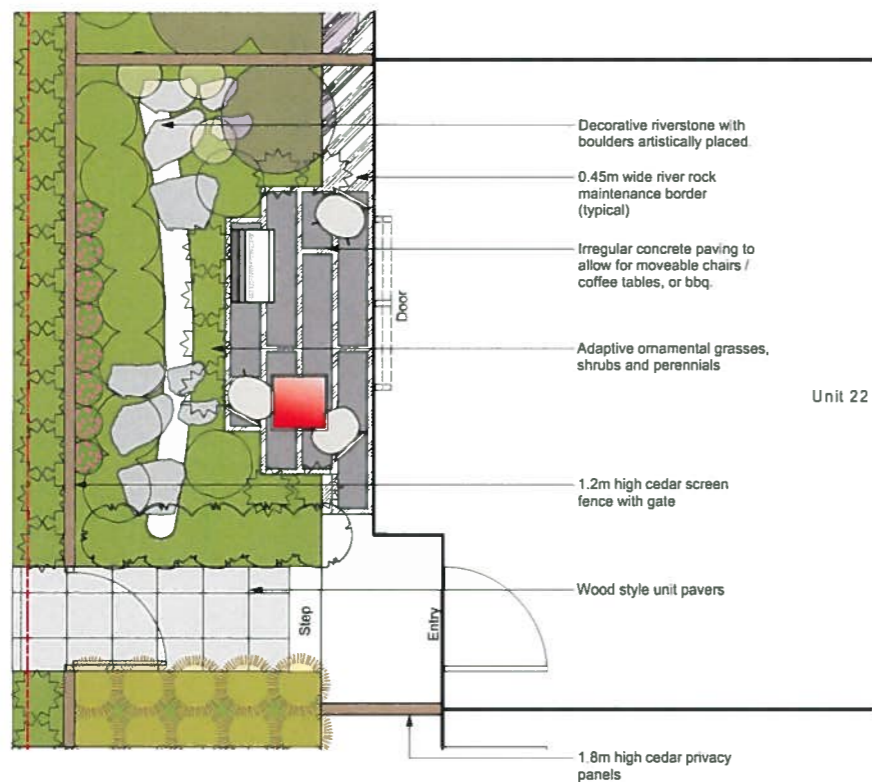


Decorative riverstone



Timber style unit pavers (Entries and rear patios)



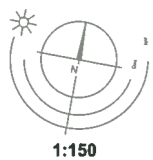
Irregular concrete pavers (Front Patios)



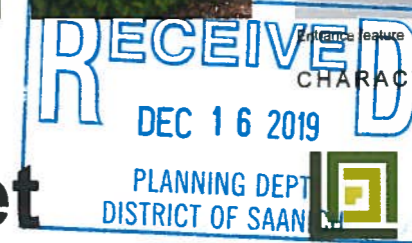
PLANT CHARACTER IMAGES



CHARACTER IMAGES

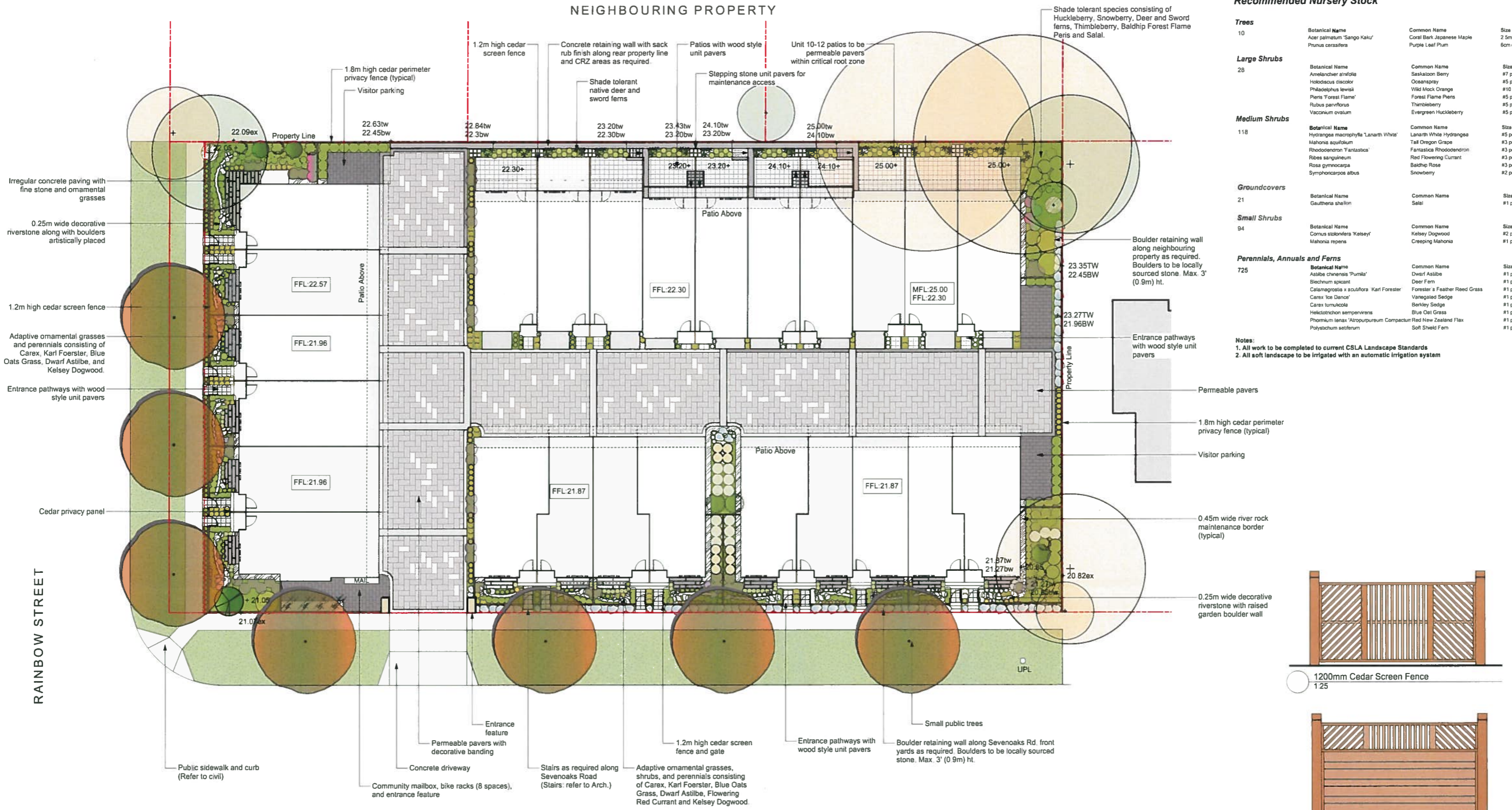


Part Plans + Character Images - 3977 Rainbow Street



LADR LANDSCAPE ARCHITECTS

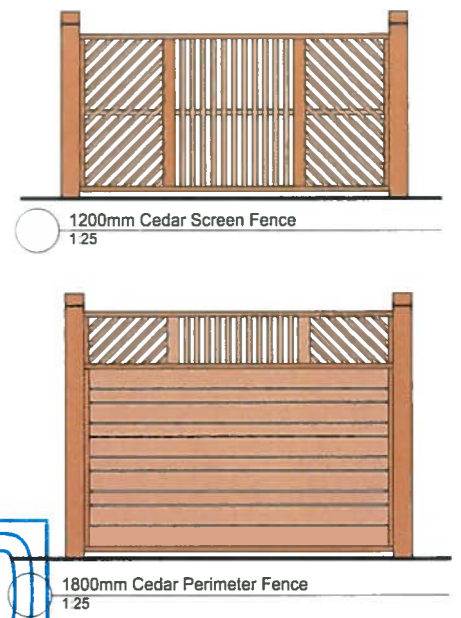
NEIGHBOURING PROPERTY



Recommended Nursery Stock

Trees	Botanical Name	Common Name	Size
10	Acer palmatum 'Sango Kaku'	Coral Bark Japanese Maple	2.5m ht
	Prunus cerasifera	Purple Leaf Plum	60cm cal
Large Shrubs			
28	Anemone nemorosa	Saskatoon Berry	#7 pot
	Holodiscus discolor	Ocean spray	#5 pot
	Philadelphus lewisii	Wild Mock Orange	#10 pot
	Persea 'Forest Flame'	Forest Flame Pear	#5 pot
	Rubus parviflorus	Thimbleberry	#5 pot
	Vaccinium ovatum	Evergreen Huckleberry	#5 pot
Medium Shrubs			
118	Hydrangea macrophylla 'Lanarth White'	Lanarth White Hydrangea	#5 pot
	Mahonia aquifolium	Tall Oregon Grape	#3 pot
	Rhododendron 'Fantastica'	Fantastica Rhododendron	#3 pot
	Ribes sanguineum	Red Flowering Currant	#3 pot
	Rosa gymnocarpa	Baldhip Rose	#3 pot
	Symphoricarpos albus	Snowberry	#2 pot
Groundcovers			
21	Gaillardia 'shellon'	Salei	#1 pot
Small Shrubs			
94	Comus stolonifera 'Kelsey'	Kelsey Dogwood	#2 pot
	Mahonia repens	Creeping Mahonia	#1 pot
Perennials, Annuals and Ferns			
725	Astilbe chinensis 'Pumila'	Dwarf Astilbe	#1 pot
	Blechnum spicant	Deer Fern	#1 pot
	Calanagrostis x acutiflora 'Karl Forster'	Forester's Feather Reed Grass	#1 pot
	Carex 'Ice Dance'	Vanegated Sedge	#1 pot
	Carex tumulicola	Berkley Sedge	#1 pot
	Helictotrichon sempervirens	Blue Oat Grass	#1 pot
	Phormium tenax 'Atropurpureum Compactum'	Red New Zealand Flax	#1 pot
	Polystichum setiferum	Soft Shield Fern	#1 pot

Notes:
 1. All work to be completed to current CSLA Landscape Standards
 2. All soft landscape to be irrigated with an automatic irrigation system



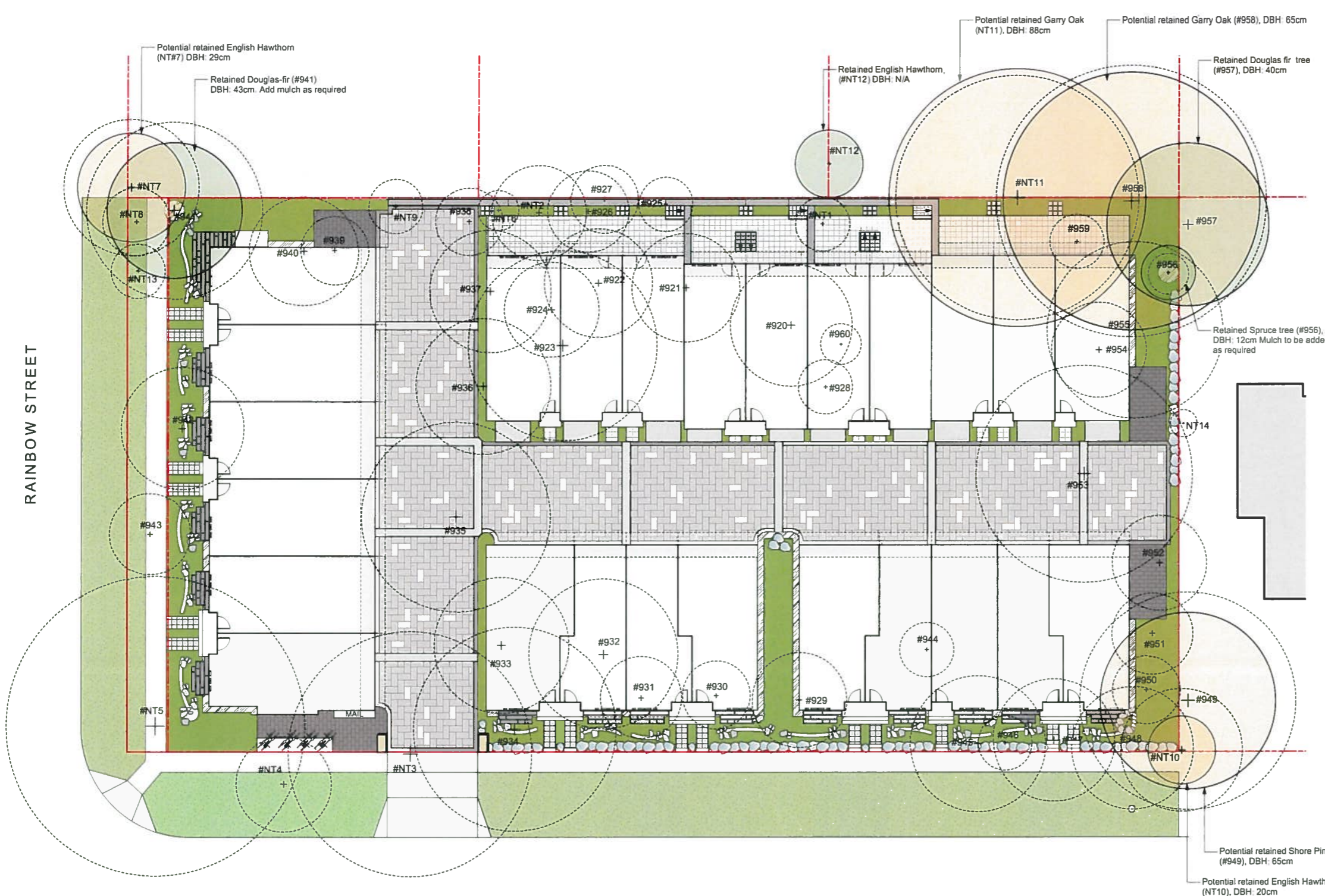
RECEIVED
 DEC 16 2019
 PLANNING DEPT.
 DISTRICT OF SAANICH

LADR LANDSCAPE ARCHITECTS

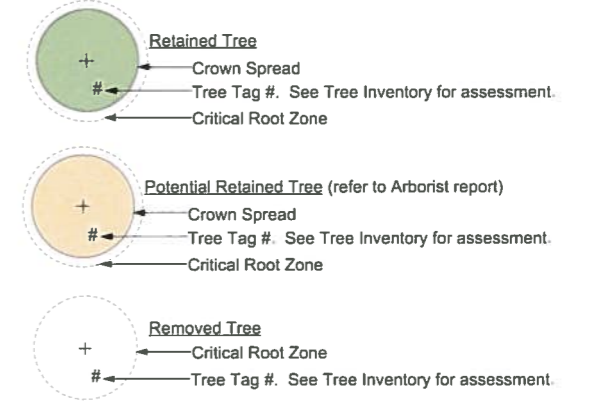
Project No: 1946 10 December 2019 #3-864 Queens Ave. Victoria B.C. V8T 1M5 Phone: (250) 598-0105

Landscape Concept Plan - 3977 Rainbow Street

NOTE: PLAN MUST BE PRINTED IN COLOR



Existing Trees Legend:

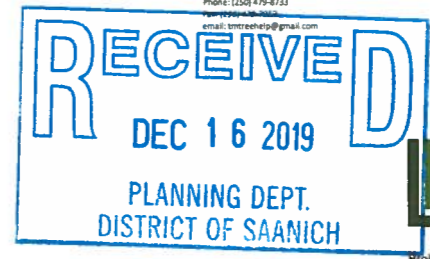


Inventory of Existing Trees¹

Tree ID	Common Name	Latin Name	DBH (cm)	Height (m)	Health	Structure	Remarks and Recommendations	When Proposed	Notes	Retention	Impact
920	Prunus sp.	Prunus sp.	23.31	17	1.0	M	Good	Remove	Building 1	Retain	Building 1
921	Prunus sp.	Prunus sp.	23.0	17	1.0	M	Good	Remove	Building 1	Retain	Building 1
922	Prunus sp.	Prunus sp.	23.0	17	1.0	M	Good	Remove	Building 1	Retain	Building 1
923	Prunus sp.	Prunus sp.	23.0	17	1.0	M	Good	Remove	Building 1	Retain	Building 1
924	Prunus sp.	Prunus sp.	23.0	17	1.0	M	Good	Remove	Building 1	Retain	Building 1
925	Prunus sp.	Prunus sp.	23.0	17	1.0	M	Good	Remove	Building 1	Retain	Building 1
926	Prunus sp.	Prunus sp.	23.0	17	1.0	M	Good	Remove	Building 1	Retain	Building 1
927	Prunus sp.	Prunus sp.	23.0	17	1.0	M	Good	Remove	Building 1	Retain	Building 1
928	Prunus sp.	Prunus sp.	23.0	17	1.0	M	Good	Remove	Building 1	Retain	Building 1
929	Prunus sp.	Prunus sp.	23.0	17	1.0	M	Good	Remove	Building 1	Retain	Building 1
930	Prunus sp.	Prunus sp.	23.0	17	1.0	M	Good	Remove	Building 1	Retain	Building 1
931	Prunus sp.	Prunus sp.	23.0	17	1.0	M	Good	Remove	Building 1	Retain	Building 1
932	Prunus sp.	Prunus sp.	23.0	17	1.0	M	Good	Remove	Building 1	Retain	Building 1
933	Prunus sp.	Prunus sp.	23.0	17	1.0	M	Good	Remove	Building 1	Retain	Building 1
934	Prunus sp.	Prunus sp.	23.0	17	1.0	M	Good	Remove	Building 1	Retain	Building 1
935	Prunus sp.	Prunus sp.	23.0	17	1.0	M	Good	Remove	Building 1	Retain	Building 1
936	Prunus sp.	Prunus sp.	23.0	17	1.0	M	Good	Remove	Building 1	Retain	Building 1
937	Prunus sp.	Prunus sp.	23.0	17	1.0	M	Good	Remove	Building 1	Retain	Building 1
938	Prunus sp.	Prunus sp.	23.0	17	1.0	M	Good	Remove	Building 1	Retain	Building 1
939	Prunus sp.	Prunus sp.	23.0	17	1.0	M	Good	Remove	Building 1	Retain	Building 1
940	Prunus sp.	Prunus sp.	23.0	17	1.0	M	Good	Remove	Building 1	Retain	Building 1
941	Prunus sp.	Prunus sp.	23.0	17	1.0	M	Good	Remove	Building 1	Retain	Building 1
942	Prunus sp.	Prunus sp.	23.0	17	1.0	M	Good	Remove	Building 1	Retain	Building 1
943	Prunus sp.	Prunus sp.	23.0	17	1.0	M	Good	Remove	Building 1	Retain	Building 1
944	Prunus sp.	Prunus sp.	23.0	17	1.0	M	Good	Remove	Building 1	Retain	Building 1
945	Prunus sp.	Prunus sp.	23.0	17	1.0	M	Good	Remove	Building 1	Retain	Building 1
946	Prunus sp.	Prunus sp.	23.0	17	1.0	M	Good	Remove	Building 1	Retain	Building 1
947	Prunus sp.	Prunus sp.	23.0	17	1.0	M	Good	Remove	Building 1	Retain	Building 1
948	Prunus sp.	Prunus sp.	23.0	17	1.0	M	Good	Remove	Building 1	Retain	Building 1
949	Prunus sp.	Prunus sp.	23.0	17	1.0	M	Good	Remove	Building 1	Retain	Building 1
950	Prunus sp.	Prunus sp.	23.0	17	1.0	M	Good	Remove	Building 1	Retain	Building 1
951	Prunus sp.	Prunus sp.	23.0	17	1.0	M	Good	Remove	Building 1	Retain	Building 1
952	Prunus sp.	Prunus sp.	23.0	17	1.0	M	Good	Remove	Building 1	Retain	Building 1
953	Prunus sp.	Prunus sp.	23.0	17	1.0	M	Good	Remove	Building 1	Retain	Building 1
954	Prunus sp.	Prunus sp.	23.0	17	1.0	M	Good	Remove	Building 1	Retain	Building 1
955	Prunus sp.	Prunus sp.	23.0	17	1.0	M	Good	Remove	Building 1	Retain	Building 1
956	Prunus sp.	Prunus sp.	23.0	17	1.0	M	Good	Remove	Building 1	Retain	Building 1
957	Prunus sp.	Prunus sp.	23.0	17	1.0	M	Good	Remove	Building 1	Retain	Building 1
958	Prunus sp.	Prunus sp.	23.0	17	1.0	M	Good	Remove	Building 1	Retain	Building 1
959	Prunus sp.	Prunus sp.	23.0	17	1.0	M	Good	Remove	Building 1	Retain	Building 1
960	Prunus sp.	Prunus sp.	23.0	17	1.0	M	Good	Remove	Building 1	Retain	Building 1
960+	Prunus sp.	Prunus sp.	23.0	17	1.0	M	Good	Remove	Building 1	Retain	Building 1
920+	Prunus sp.	Prunus sp.	23.0	17	1.0	M	Good	Remove	Building 1	Retain	Building 1
NT#7	English Hawthorn	Crataegus sp.	29				Good	Remove	Building 1	Retain	Building 1
NT#8	English Hawthorn	Crataegus sp.	29				Good	Remove	Building 1	Retain	Building 1
NT#9	English Hawthorn	Crataegus sp.	29				Good	Remove	Building 1	Retain	Building 1
NT#10	English Hawthorn	Crataegus sp.	20				Good	Remove	Building 1	Retain	Building 1
NT#11	Garry Oak	Quercus garryana	88				Good	Remove	Building 1	Retain	Building 1
NT#12	English Hawthorn	Crataegus sp.	N/A				Good	Remove	Building 1	Retain	Building 1
NT#13	English Hawthorn	Crataegus sp.	29				Good	Remove	Building 1	Retain	Building 1
NT#14	English Hawthorn	Crataegus sp.	29				Good	Remove	Building 1	Retain	Building 1
NT#15	English Hawthorn	Crataegus sp.	29				Good	Remove	Building 1	Retain	Building 1
NT#16	Shore Pine	Pinus strobus	65				Good	Remove	Building 1	Retain	Building 1



Tree Preservation Plan - 3977 Rainbow Street



LADR LANDSCAPE ARCHITECTS
 Project No: 1946 10 December 2019
 #3-854 Queens Ave. Victoria B.C. V8T 1M5
 Phone: (250) 598-0105