

OWNER/CLIENT:

CONSULTANT:



Suite C100 - 4185 Still Creek Drive
Burnaby, British Columbia, V5C 6G9
p: 604 294-0011 ; f: 604 294-0022

16	23.AUG.21	RE-ISSUED FOR DP/MA	CW
15	22.OCT.15	ISSUED FOR TENDER	MC
14	22.OCT.04	ISSUED FOR BP	CW
13	22.SEP.16	ISSUED FOR BP REVIEW	CW
12	22.MAY.16	ISSUED FOR PRICING	CW
11	21.DEC.14	REVISED PER STREET TREE NOTATION	CW
10	21.12.07	REVISED PER CEDAR HILL CHANGES	CW
9	21.JUL.14	RE-ISSUED FOR DP	CW
8	21.MAY.07	NOTES ADDED/ RE-ISSUED FOR DP	CW
7	20.JUL.17	RE-ISSUED FOR DP	CW
6	20.MAY.04	ISSUED FOR DP	CW
5	19.OCT.01	ISSUED FOR DP AND REZONING	CW
4	18.OCT.05	ISSUED FOR DP AND REZONING	CW
3	18.SEP.28	REV. PER NEW SITE PLAN	CW
2	18.JUL.27	REV. PER NEW CIVIL PLANS	CW
1	18.JUN.18	REVISED PER CITY COMMENTS	CW

NO. Y/MD ISSUE BY

SEAL:

ARCHITECT:



VAN 301 - 1444 Alberni Street Vancouver, V6G 2Z4
VIC 104 - 2212 Jaxton Road Victoria, V8B 0J5
604.685.3529 | office@iwa-arch.ca | iwa-arch.ca

PROJECT NAME:
UNIVERSITY HEIGHTS SHOPPING CENTRE MIXED-USE

PROJECT ADDRESS:
3556 SHELBOURNE STREET
SAANICH, BC V8N 3E2

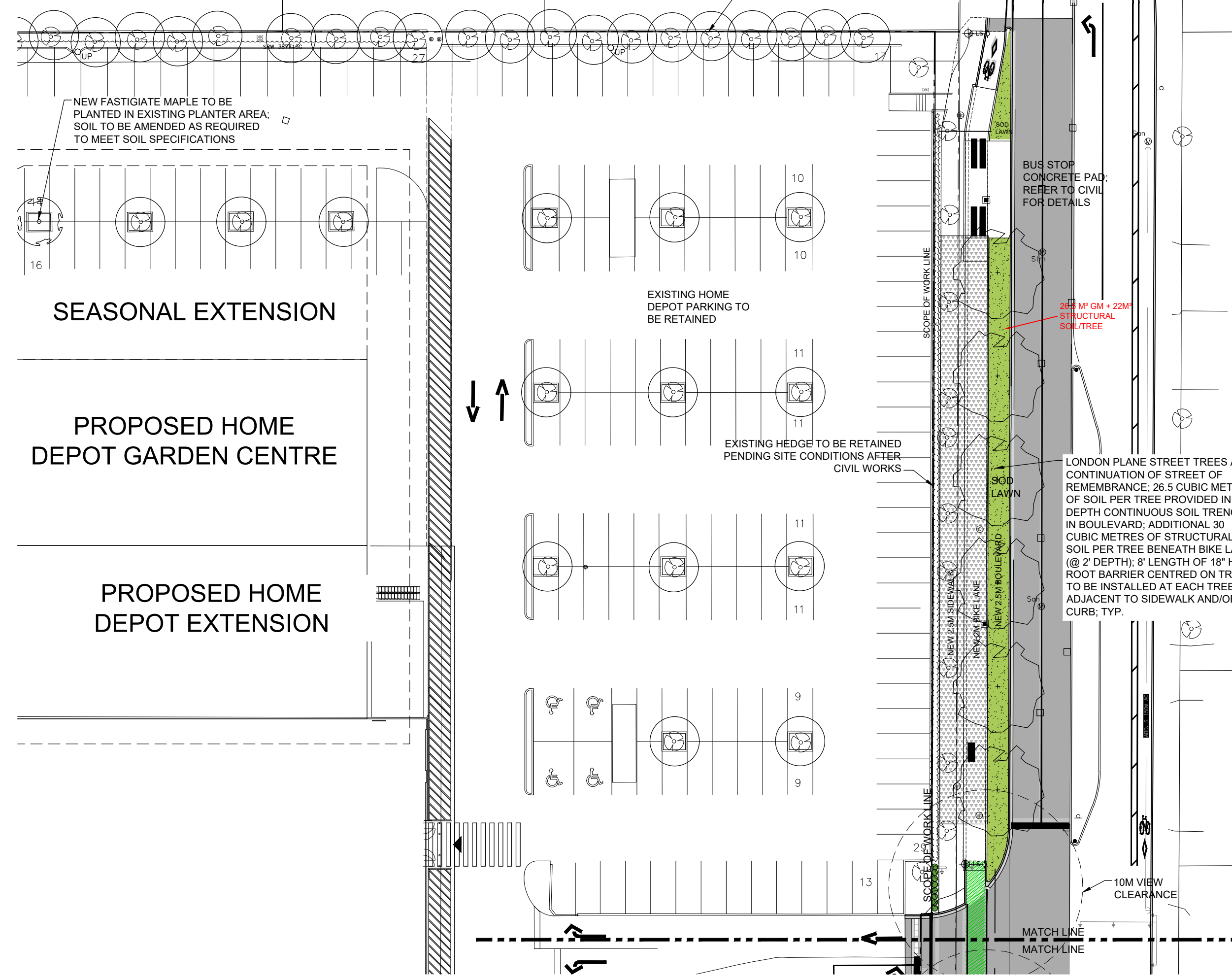
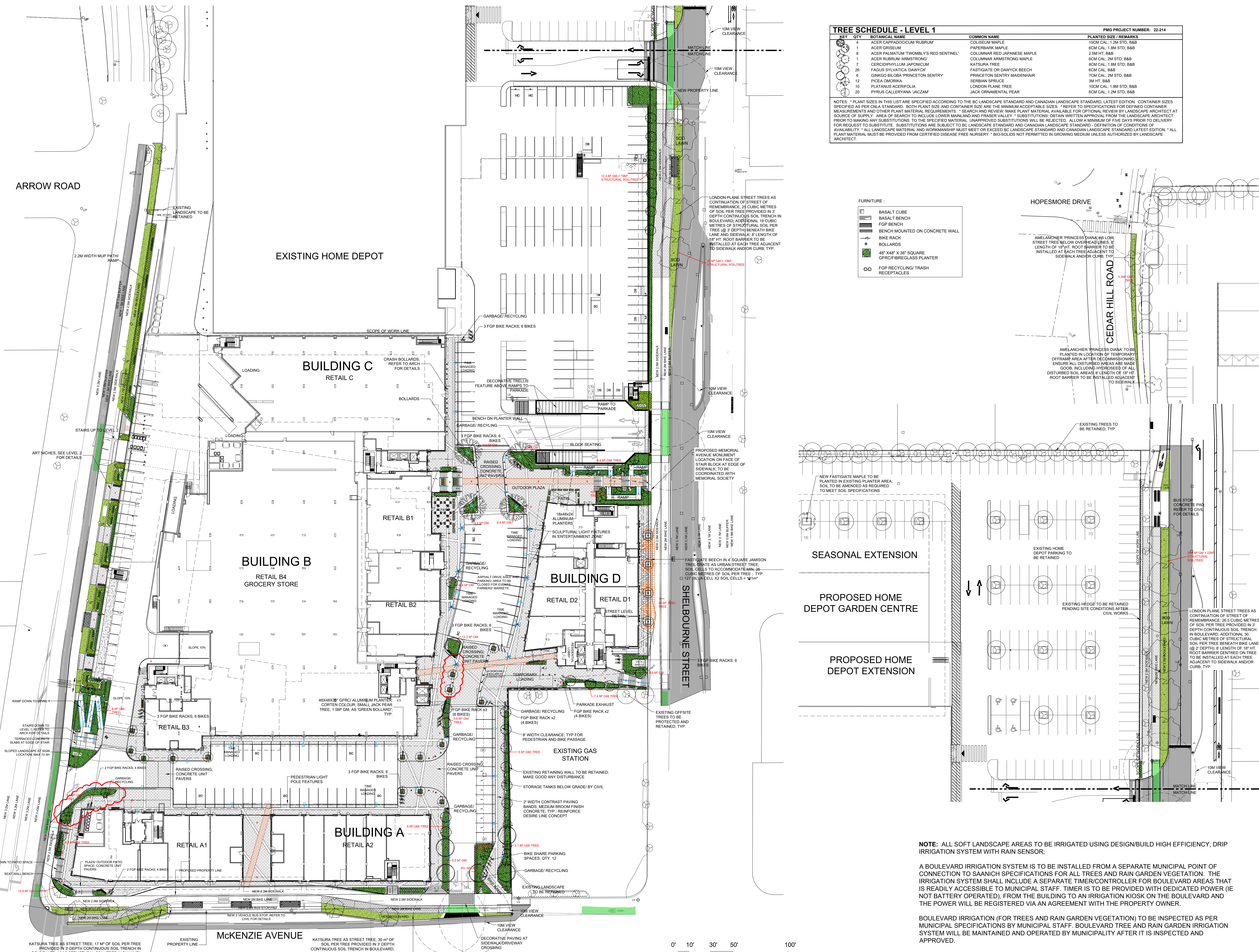
DRAWING TITLE:
LANDSCAPE PLAN LEVEL 1

PROJECT NO: 22-214 DRAWN BY: CW
SCALE: 1/32" = 1'-0" REVIEW BY: CW
DWG NO: 22214-2DPM-A-ZIP

KEY	QTY	BOTANICAL NAME	COMMON NAME	PLANTED SIZE / REMARKS
4	1	ACER CARPAPOCCULUM 'RUBRUM'	COLLEUM MAPLE	10CM CAL, 1.2M STD, B&B
1	1	ACER GRiseum	PAPERBARK MAPLE	6CM CAL, 1.8M STD, B&B
8	1	ACER PALMUTUM 'TWOBLY'S RED SENTINEL'	COLLUMAR RED JAPANESE MAPLE	2.5M HT, B&B
1	1	ACER RUBRUM 'HIMMSTRONG'	COLLUMAR ARMSTRONGS MAPLE	8CM CAL, 2M STD, B&B
2	7	CERCIDIPHYLLUM JAPONICUM	KATSURA TREE	8CM CAL, 1.8M STD, B&B
6	7	FAGUS SYLVATICA 'DAWYCK'	FASTIGIATE OR DAWYCK BEECH	6CM CAL, B&B
10	8	QUERCUS BILBOA 'PRINCETON SENTRY'	PRINCETON SENTRY MAIDENHAIR	7CM CAL, 2M STD, B&B
12	10	PICEA OMORICA	SERBIAN SPRUCE	3M HT, B&B
10	10	PLATANUS ACERIFOLIA	LONDON PLANE TREE	10CM CAL, 1.8M STD, B&B
20	20	PYRUS CALLERYANA 'JAZZAM'	JACK ORNAMENTAL PEAR	6CM CAL, 1.2M STD, B&B

NOTES: * PLANT SIZES IN THIS LIST ARE SPECIFIED ACCORDING TO THE BC LANDSCAPE STANDARD AND CANADIAN LANDSCAPE STANDARD, LATEST EDITION. CONTAINER SIZES SPECIFIED AS PER DNA STANDARD. BOTH PLANT SIZE AND CONTAINER SIZE ARE THE MINIMUM ACCEPTABLE SIZES. * REFER TO SPECIFICATIONS FOR DEFINED CONTAINER MEASUREMENTS AND OTHER PLANT MATERIAL REQUIREMENTS. * SEARCH AND REVIEW MAKE PLANT MATERIAL AVAILABLE FOR OPTIONAL REVIEW BY LANDSCAPE ARCHITECT AT SOURCE OF SUPPLY. AREA OF SEARCH TO INCLUDE LOWER MAINLAND AND FRASER VALLEY. * SUBSTITUTIONS OBTAIN WRITTEN APPROVAL FROM THE LANDSCAPE ARCHITECT PRIOR TO MAKING ANY SUBSTITUTIONS TO THE SPECIFIED MATERIAL. UNAPPROVED SUBSTITUTIONS WILL BE REJECTED. ALLOW A MINIMUM OF FIVE DAYS PRIOR TO DELIVERY FOR REQUEST TO SUBSTITUTE. SUBSTITUTIONS ARE SUBJECT TO BC LANDSCAPE STANDARD AND CANADIAN LANDSCAPE STANDARD. DEFINITION OF CONDITIONS OF AVAILABILITY. * ALL LANDSCAPE MATERIAL AND WORKMANSHIP MUST MEET OR EXCEED BC LANDSCAPE STANDARD AND CANADIAN LANDSCAPE STANDARD, LATEST EDITION. * ALL PLANT MATERIAL MUST BE PROVIDED FROM CERTIFIED DISEASE FREE NURSERY. * BIO-SOLIDS NOT PERMITTED IN GROWING MEDIUM UNLESS AUTHORIZED BY LANDSCAPE ARCHITECT.

- FURNITURE:
- BASALT CUBE
 - BASALT BENCH
 - FGP BENCH
 - BENCH MOUNTED ON CONCRETE WALL
 - BIKE RACK
 - BOLLARDS
 - 48" X 48" X 38" SQUARE GRIP/BIKEGLASS PLANTER
 - FGP RECYCLING TRASH RECEPTACLES



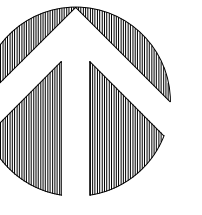
NOTE: ALL SOFT LANDSCAPE AREAS TO BE IRRIGATED USING DESIGN/BUILD HIGH EFFICIENCY, DRIP IRRIGATION SYSTEM WITH RAIN SENSOR;

A BOULEVARD IRRIGATION SYSTEM IS TO BE INSTALLED FROM A SEPARATE MUNICIPAL POINT OF CONNECTION TO SAANICH SPECIFICATIONS FOR ALL TREES AND RAIN GARDEN VEGETATION. THE IRRIGATION SYSTEM SHALL INCLUDE A SEPARATE TIMER/CONTROLLER FOR BOULEVARD AREAS THAT IS READILY ACCESSIBLE TO MUNICIPAL STAFF. TIMER IS TO BE PROVIDED WITH DEDICATED POWER (IE NOT BATTERY OPERATED), FROM THE BUILDING TO AN IRRIGATION KIOSK ON THE BOULEVARD AND THE POWER WILL BE REGISTERED VIA AN AGREEMENT WITH THE PROPERTY OWNER.

BOULEVARD IRRIGATION (FOR TREES AND RAIN GARDEN VEGETATION) TO BE INSPECTED AS PER MUNICIPAL SPECIFICATIONS BY MUNICIPAL STAFF. BOULEVARD TREE AND RAIN GARDEN IRRIGATION SYSTEM WILL BE MAINTAINED AND OPERATED BY MUNICIPALITY AFTER IT IS INSPECTED AND APPROVED.



LEVEL 1



OWNER/CLIENT:

CONSULTANT:

pmg
LANDSCAPE ARCHITECTS
Suite C100 - 4185 Still Creek Drive
Burnaby, British Columbia, V5C 6G9
p: 604 294-0011 ; f: 604 294-0022

NO.	Y/M/D	ISSUE	BY
16	23.AUG.31	RE-ISSUED FOR DP/MA	CW
15	22.DEC.15	ISSUED FOR TENDER	MC
14	22.OCT.04	ISSUED FOR BP	CW
13	22.SEP.16	ISSUED FOR BP REVIEW	CW
12	22.MAY.16	ISSUED FOR PRICING	CW
11	21.DEC.14	REVISED PER STREET TREE NOTATION	CW
10	21.JUL.07	REVISED PER CEDAR HILL CHANGES	CW
9	21.JUL.14	RE-ISSUED FOR DP	CW
8	21.MAY.07	NOTES ADDED/ RE-ISSUED FOR DP	CW
7	20.JUL.17	RE-ISSUED FOR DP	CW
6	20.MAY.04	ISSUED FOR DP	CW
5	19.OCT.05	REISSUED FOR DP AND REZONING	CW
4	18.OCT.05	REISSUED FOR DP AND REZONING	CW
3	18.SEP.28	REV. PER NEW SITE PLAN	CW
2	18.JUL.27	REV. PER NEW CIVIL PLANS	CW
1	18.JUN.18	REVISED PER CITY COMMENTS	CW

SEAL:

ARCHITECT:



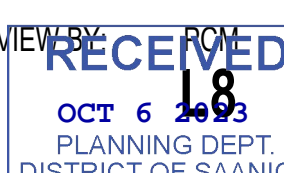
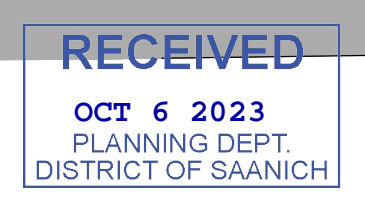
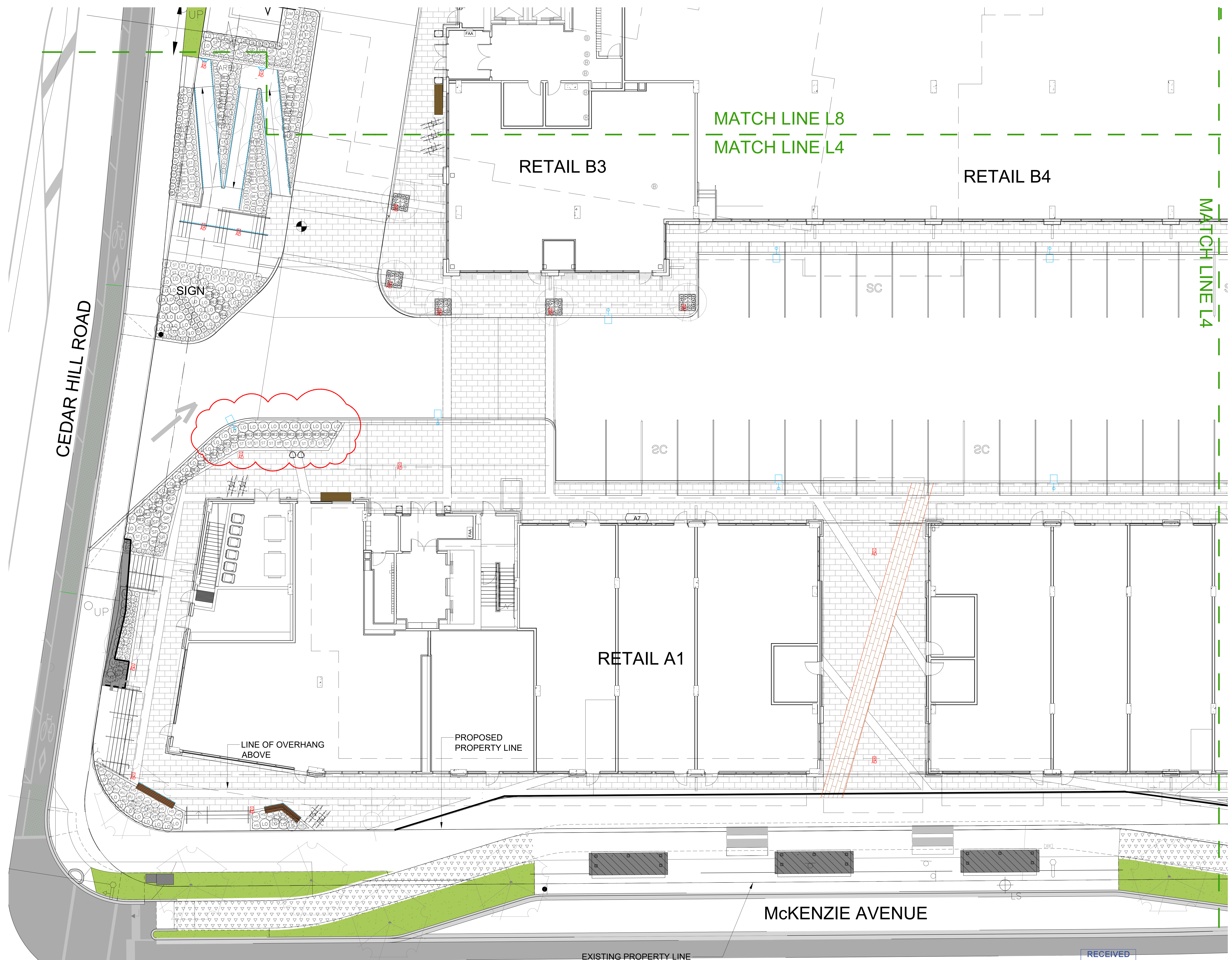
VAN 301 - 1444 Alberni Street Vancouver, V6G 2Z4
VIC 104 - 2212 Jackson Road Victoria, V8B 6J5
604.685.3529 | office@wa-arch.ca | wa-arch.ca

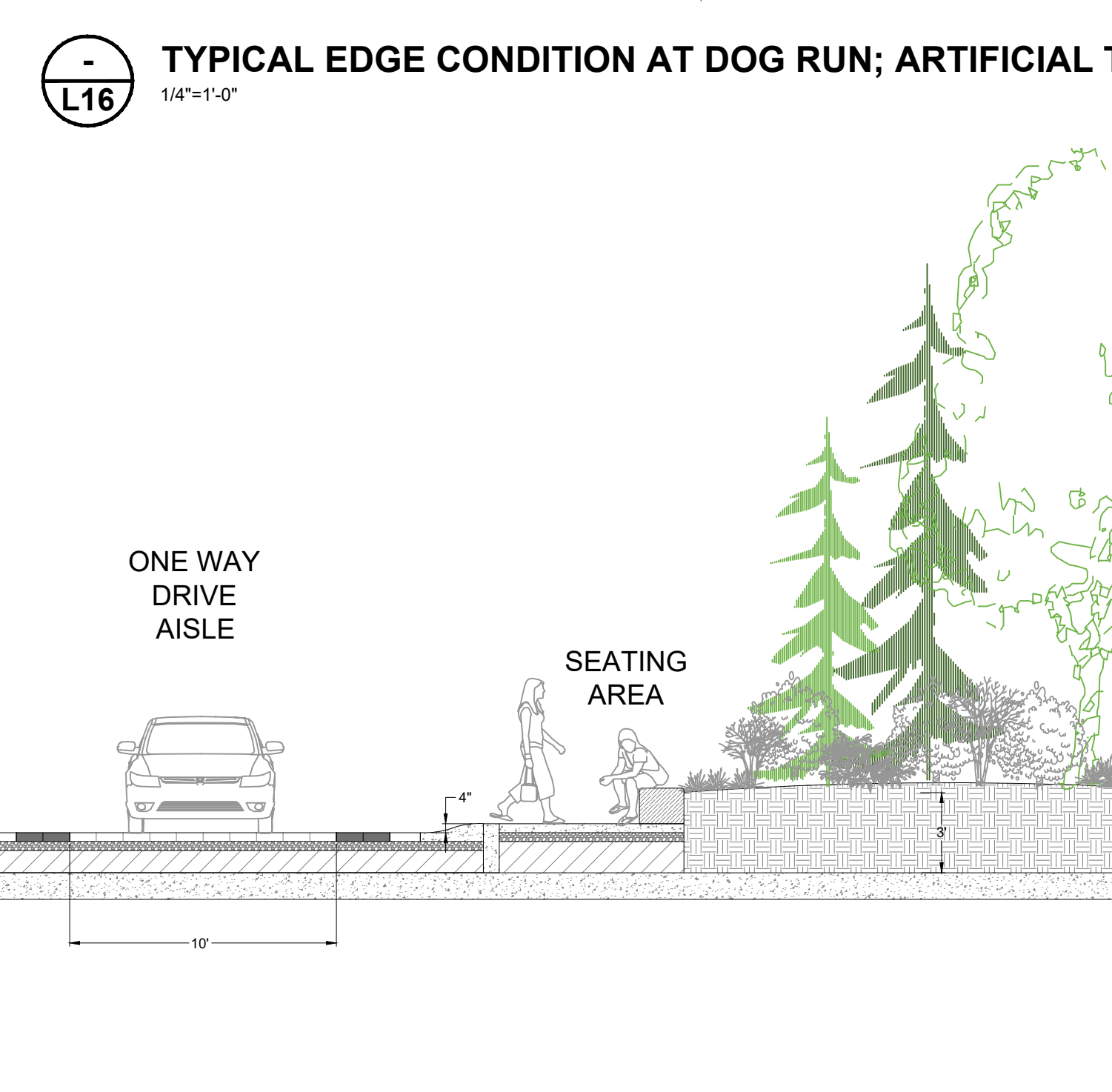
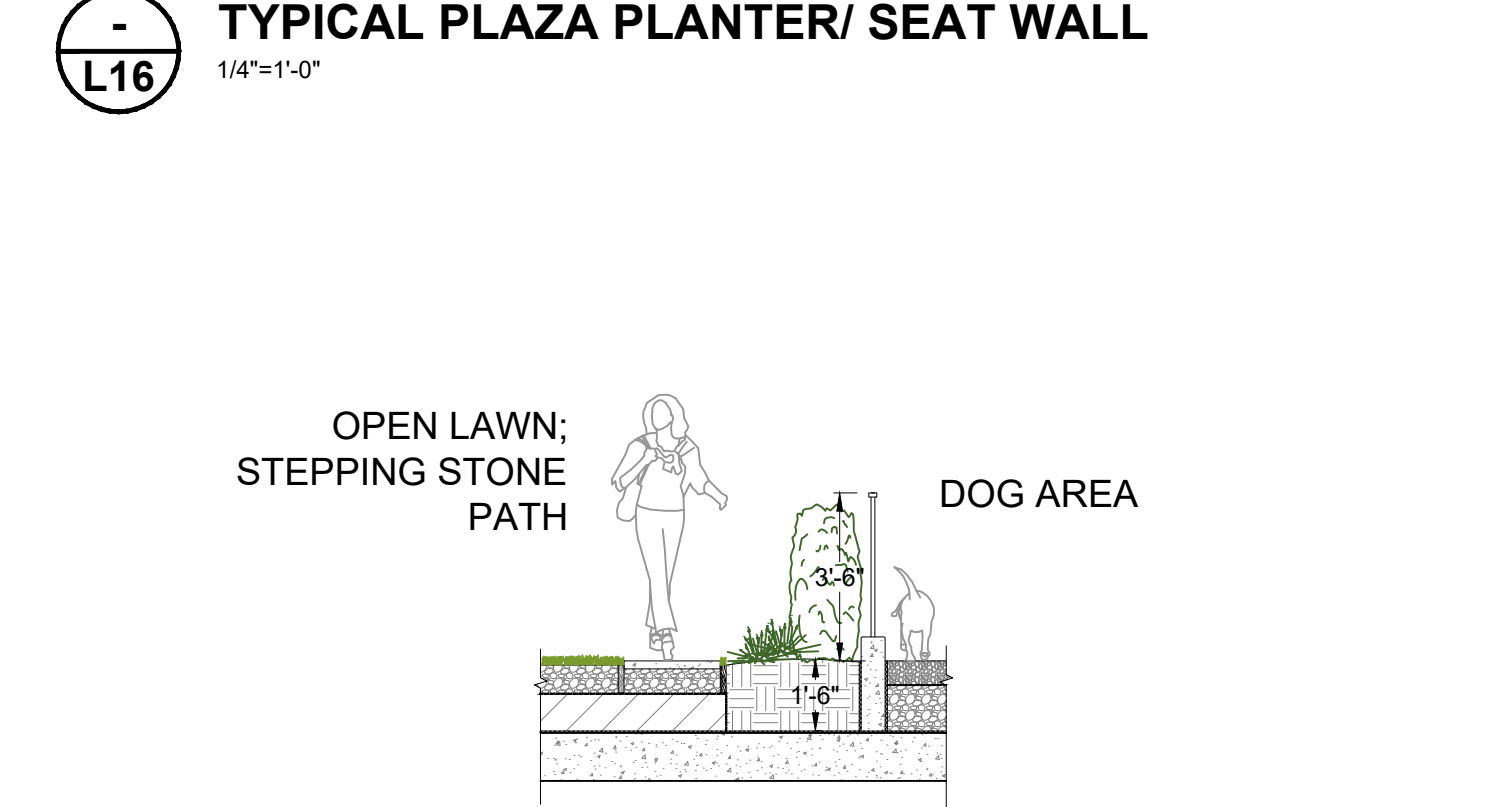
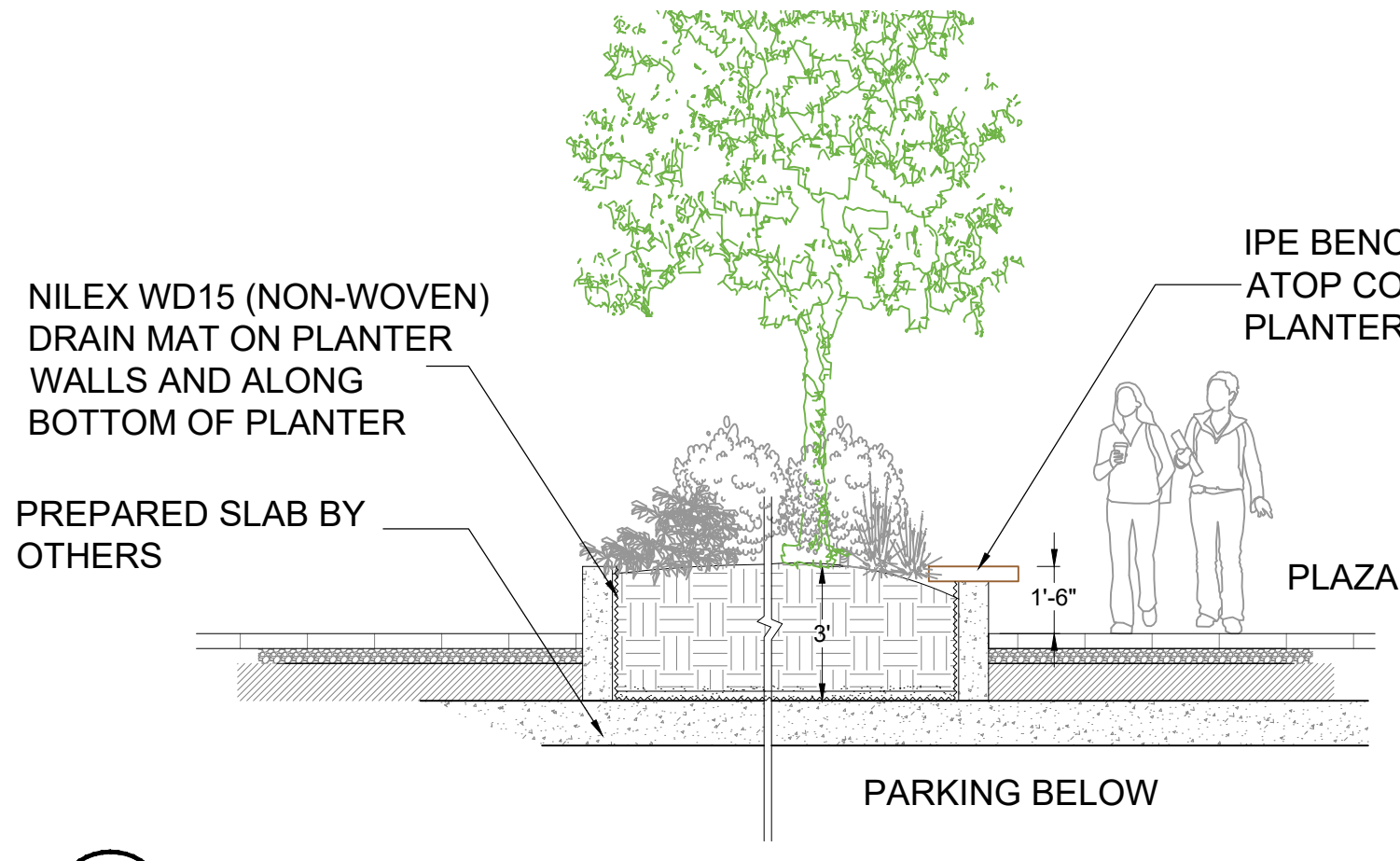
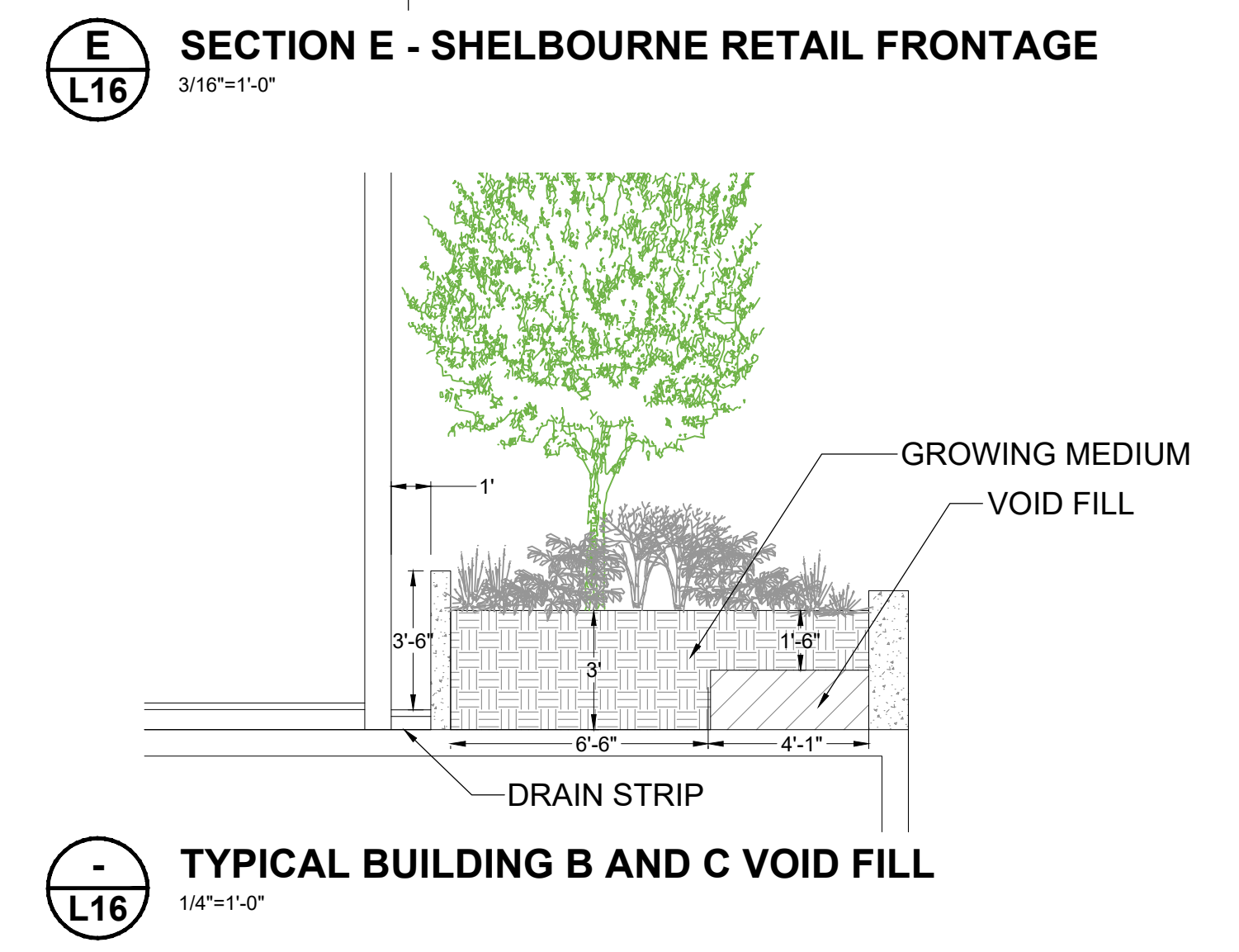
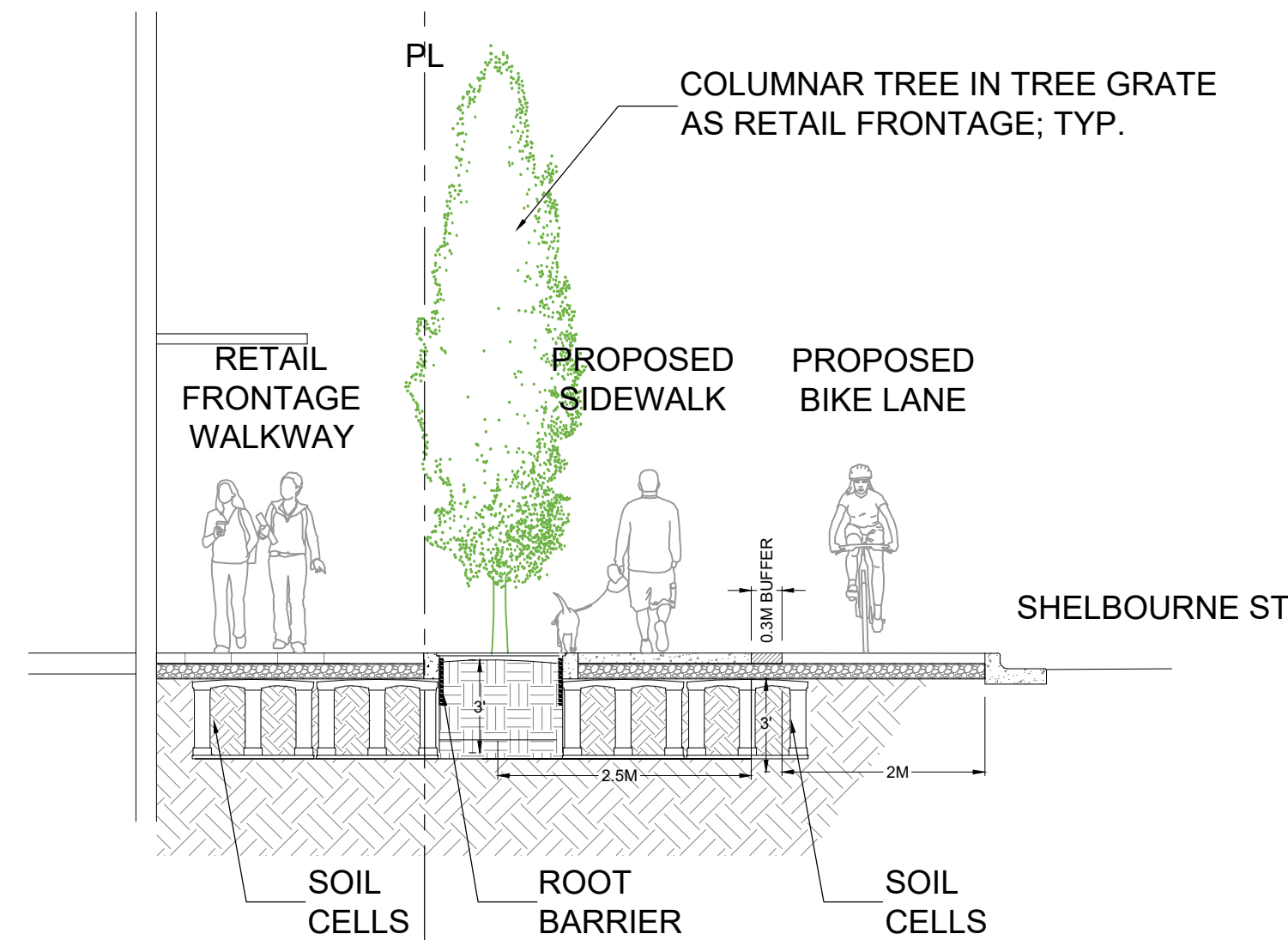
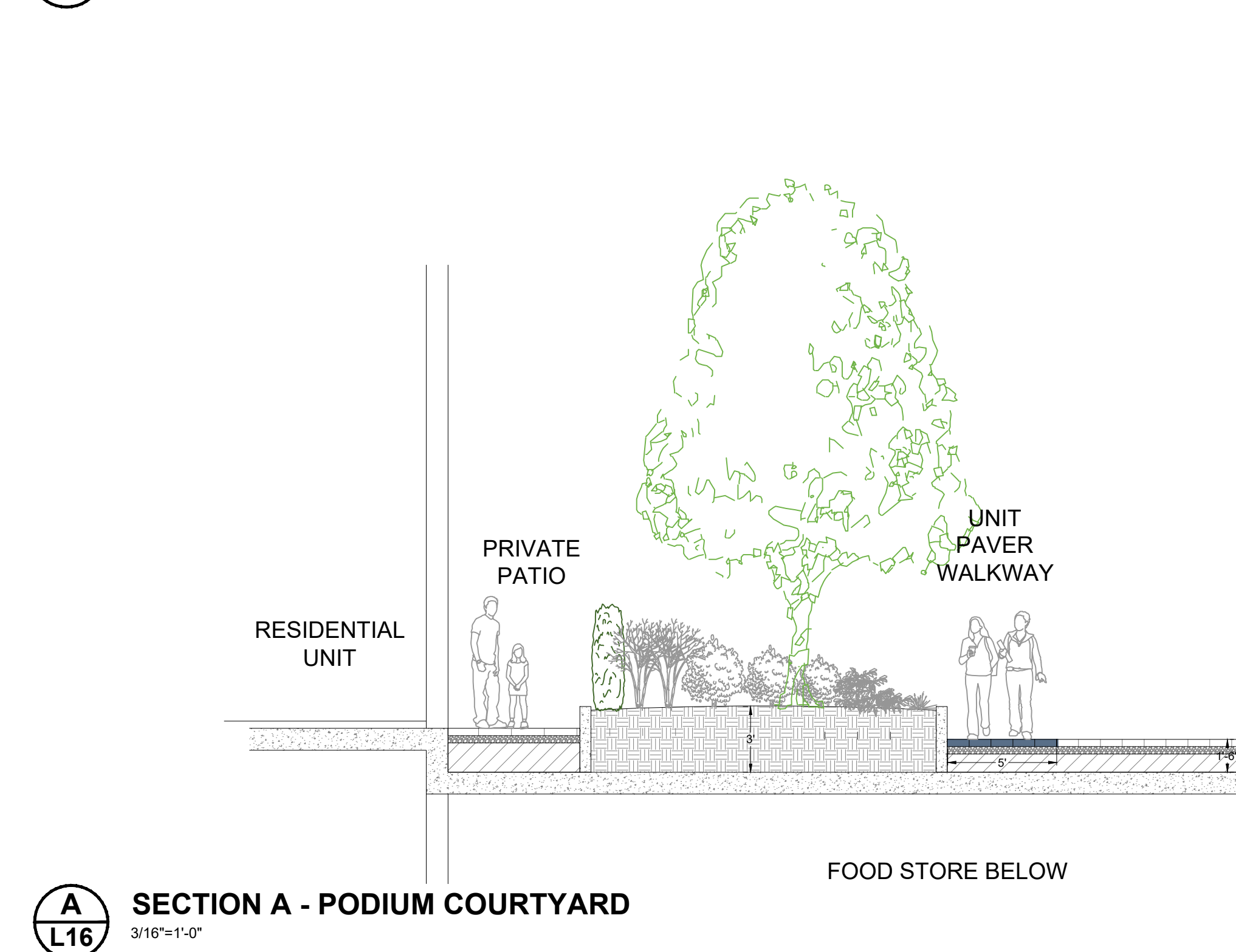
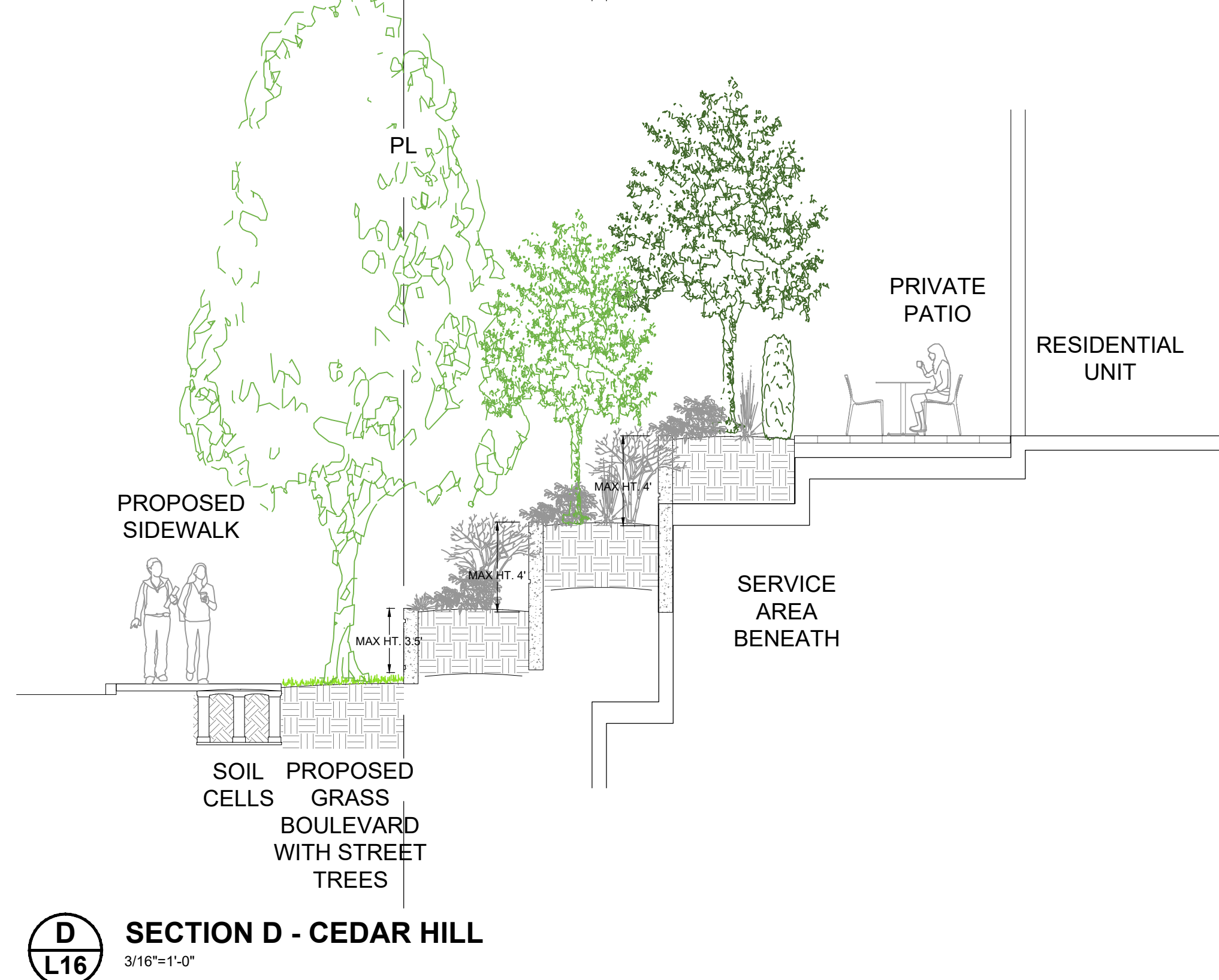
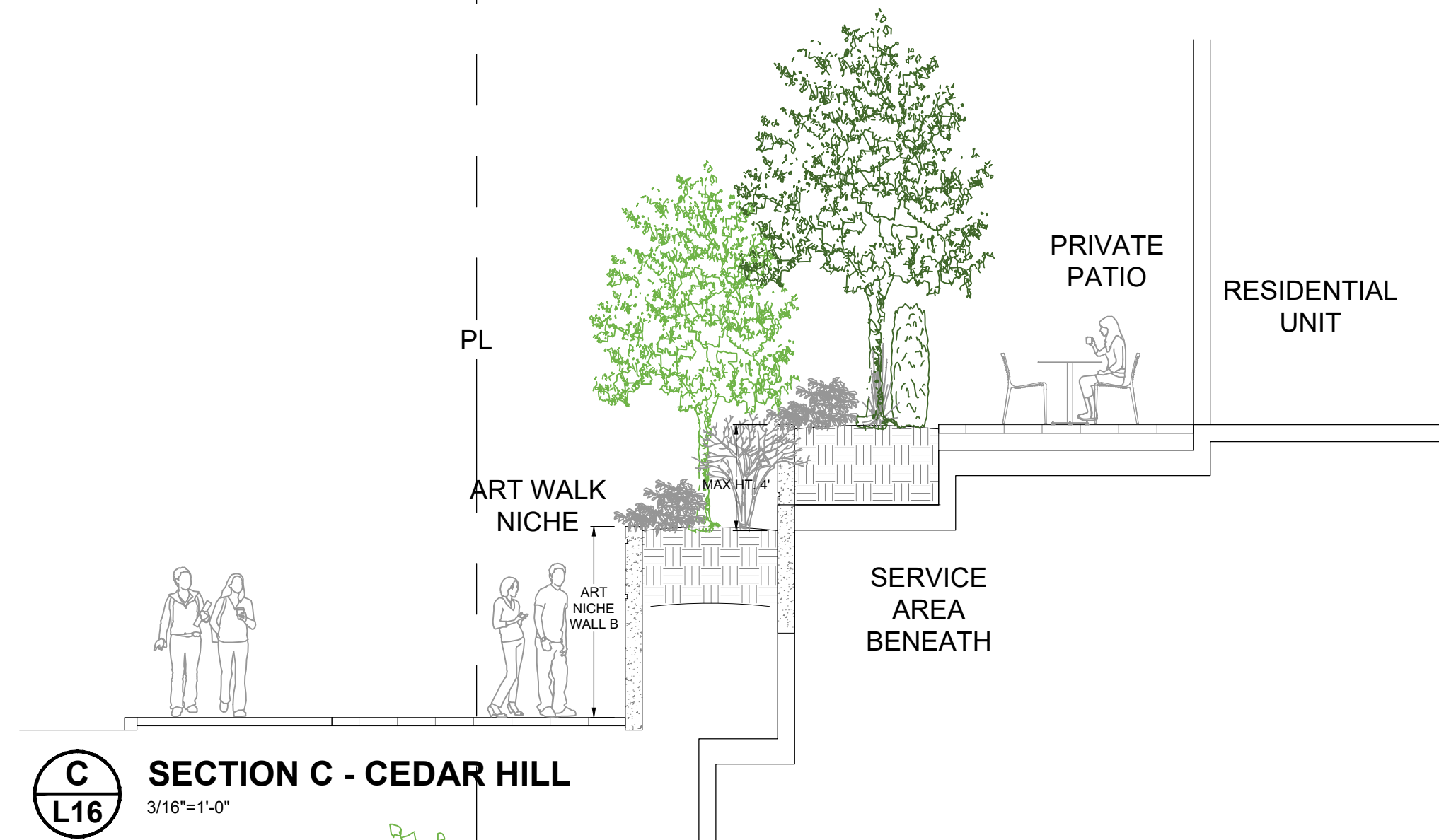
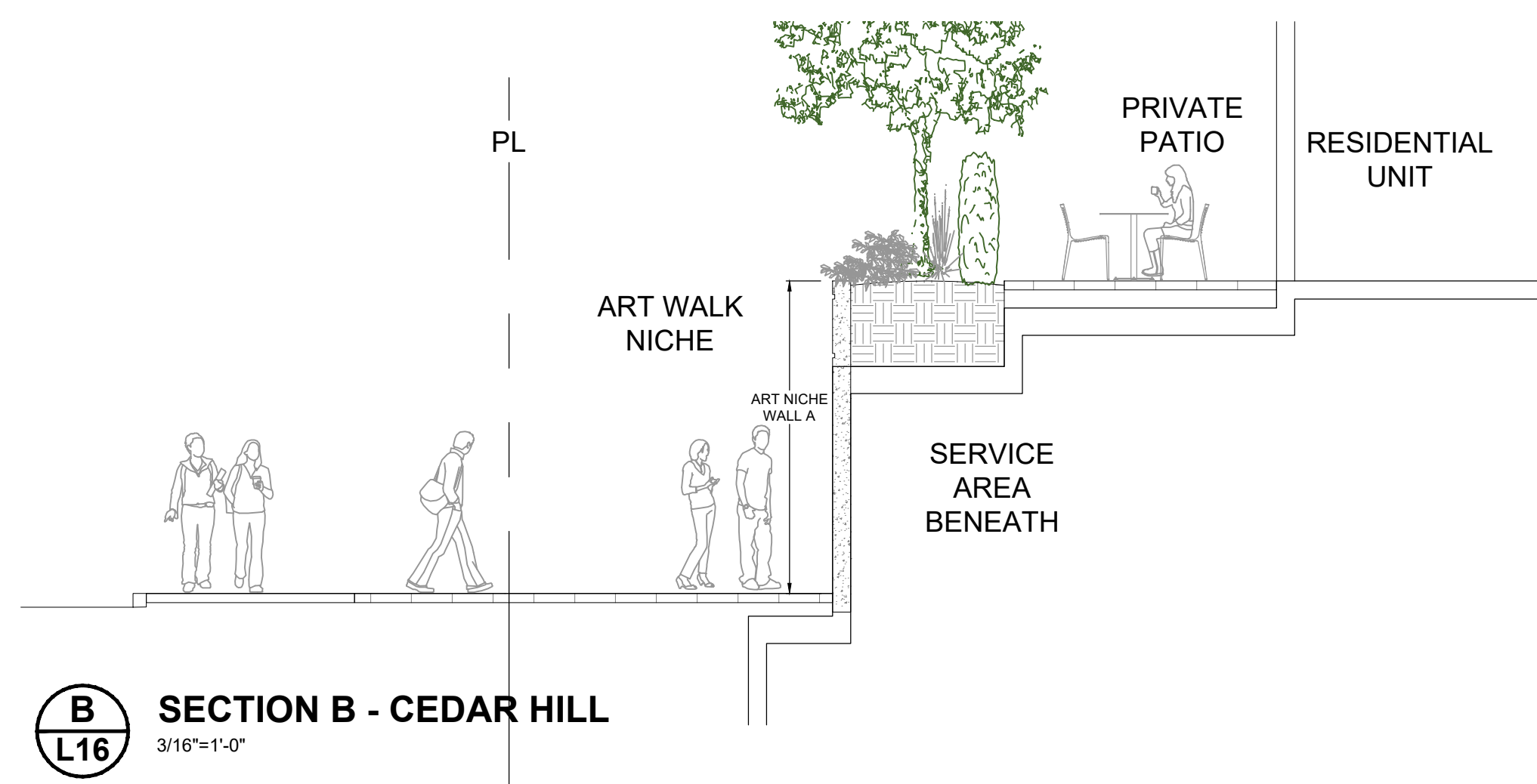
PROJECT NAME:
UNIVERSITY HEIGHTS SHOPPING CENTRE MIXED-USE

PROJECT ADDRESS:
3956 SHELBOURNE STREET
SAANICH, BC V8N 3E2

DRAWING TITLE:
SHRUB PLAN LEVEL 1

PROJECT NO: 22-214 DRAWN BY: CW
SCALE: 1/8" = 1'-0" REVIEW BY: CW
DWG NO: 22214-2DPMMA-21P





SHRUB SCHEDULE - LEVEL 1

KEY	QTY	BOTANICAL NAME	COMMON NAME	PLANTED SIZE / REMARKS
ARB	36	ARBUTUS UNEDO COMPACTA	COMPACT STRAWBERRY BUSH	#7 POT 1.25M
BEZ	126	BERBERIS THUNBERGII 'AUREA NANA'	GOLDEN DWARF BARBERRY	#3 POT; 40CM
BE	232	BERBERIS THUNBERGII 'ATROPURPUREA NANA'	DWARF PURPLE BARBERRY	#3 POT; 40CM
B	29	BUXUS MICROPHYLLA 'WINTER GEM'	LITTLE-LEAF BOX	#3 POT; 40CM
HY	2	HYDRANGEA 'LITTLE LIME'	LITTLE LIME HYDRANGEA	#2 POT
LO	449	LONICERA PILEATA	PRIVET HONEYSUCKLE	#1 POT; 25CM
SM	10	SARCOCOCCA HOOKERIANA VAR. HUMILIS	HIMALAYAN SWEET BOX	#2 POT; 25CM
SP	11	SKIMMIA JAPONICA 'MAGIC MARLOT'	MAGIC MARLOT SKIMMIA; DWARF	#2 POT; 30CM
TA	16	SPIRAEA X BUMALDA 'GOLDFLAME'	GOLDFLAME SPIREA	#3 POT; 60CM
TA	17	TAXUS X MEDIA 'H.M. EDDIE'	EDDIE'S YEW	1.2M B&B
GRASS				
RF	115	CALAMAGROSTIS ACUTIFLORA 'KARL FOERSTER'	FEATHER REED GRASS	#1 POT
CL	146	CAREX OSHIMENSIS 'EVERGOLD'	EVERGOLD JAPANESE SEDGE	#1 POT
HS	581	HELIOTRICHON SEMPERVIRENS	BLUE OAT GRASS	#1 POT
ST	427	STIPA TENUISSIMA	MEXICAN FEATHER GRASS	#1 POT
PERENNIAL				
LA	116	LAVENDULA ANGUSTIFOLIA 'MUNSTEAD'	ENGLISH LAVENDER; COMPACT; VIOLET-BLUE	#1 POT
RU	76	RUDBECKIA FULGIDA VAR SULLIVANTII 'GOLDSTURM'	RUDBECKIA; YELLOW	15CM POT
GC				
U	539	ARCTOSTAPHYLOS UVA-URSI 'MASSACHUSETTS'	KINNICKINICK	#1 POT; 20CM
V	180	VACCINIUM VITIS IDAEA	LINGONBERRY	#1 POT; 25CM

NOTES: * PLANT SIZES IN THIS LIST ARE SPECIFIED ACCORDING TO THE BC LANDSCAPE STANDARD AND CANADIAN LANDSCAPE STANDARD, LATEST EDITION. CONTAINER SIZES SPECIFIED AS PER CNLA STANDARD. BOTH PLANT SIZE AND CONTAINER SIZE ARE THE MINIMUM ACCEPTABLE SIZES. * REFER TO SPECIFICATIONS FOR DEFINED CONTAINER MEASUREMENTS AND OTHER PLANT MATERIAL REQUIREMENTS. * SEARCH AND REVIEW: MAKE PLANT MATERIAL AVAILABLE FOR OPTIONAL REVIEW BY LANDSCAPE ARCHITECT AT SOURCE OF SUPPLY. AREA OF SEARCH TO INCLUDE LOWER MAINLAND AND FRASER VALLEY. * SUBSTITUTIONS: OBTAIN WRITTEN APPROVAL FROM THE LANDSCAPE ARCHITECT PRIOR TO MAKING ANY SUBSTITUTIONS TO THE SPECIFIED MATERIAL. UNAPPROVED SUBSTITUTIONS WILL BE REJECTED. ALLOW A MINIMUM OF FIVE DAYS PRIOR TO DELIVERY FOR REQUEST TO SUBSTITUTE. SUBSTITUTIONS ARE SUBJECT TO BC LANDSCAPE STANDARD AND CANADIAN LANDSCAPE STANDARD - DEFINITION OF CONDITIONS OF AVAILABILITY. * ALL LANDSCAPE MATERIAL AND WORKMANSHIP MUST MEET OR EXCEED BC LANDSCAPE STANDARD AND CANADIAN LANDSCAPE STANDARD LATEST EDITION. * ALL PLANT MATERIAL MUST BE PROVIDED FROM CERTIFIED DISEASE FREE NURSERY. * BIO-SOLIDS NOT PERMITTED IN GROWING MEDIUM UNLESS AUTHORIZED BY LANDSCAPE ARCHITECT.

SHRUB SCHEDULE - LEVEL 2

KEY	QTY	BOTANICAL NAME	COMMON NAME	PLANTED SIZE / REMARKS
ARB	111	ARBUTUS UNEDO COMPACTA	COMPACT STRAWBERRY BUSH	#7 POT 1.25M
BEZ	6	BERBERIS THUNBERGII 'AUREA NANA'	GOLDEN DWARF BARBERRY	#3 POT; 40CM
BE	37	BERBERIS THUNBERGII 'ATROPURPUREA NANA'	DWARF PURPLE BARBERRY	#3 POT; 40CM
B	62	BUXUS MICROPHYLLA 'WINTER GEM'	LITTLE-LEAF BOX	#3 POT; 40CM
HY	52	CORNUS SERICEA 'KELSEY'	DWARF KELSEY DOGWOOD	#3 POT; 80CM
HY	111	HYDRANGEA 'LITTLE LIME'	LITTLE LIME HYDRANGEA	#2 POT
LO	784	LONICERA PILEATA	PRIVET HONEYSUCKLE	#1 POT; 25CM
MA	408	MAHONIA AQUIFOLIUM 'COMPACTA'	COMPACT OREGON GRAPE HOLLY	#2 POT; 25CM
FL	64	PHILADELPHUS 'SNOWBELLE'	SNOWBELLE MOCK ORANGE	#3 POT; 60CM
RH	19	RHODODENDRON 'ANAH KRUSCHKE'	RHODODENDRON; BLUE	#5 POT; 80CM
RI	26	RIBES SANGUINEUM	RED FLOWERING CURRANT	#3 POT; 80CM
RO	67	ROSA MEIDLAND 'ALBA'	MEIDLAND ROSE; WHITE	#2 POT; 40CM
SM	125	SARCOCOCCA HOOKERIANA VAR. HUMILIS	HIMALAYAN SWEET BOX	#2 POT; 25CM
SP	45	SKIMMIA JAPONICA 'MAGIC MARLOT'	MAGIC MARLOT SKIMMIA; DWARF	#2 POT; 30CM
SP	221	SPIRAEA X BUMALDA 'GOLDFLAME'	GOLDFLAME SPIREA	#3 POT; 60CM
TA	771	TAXUS X MEDIA 'H.M. EDDIE'	EDDIE'S YEW	1.2M B&B
TO	71	THUJA OCCIDENTALIS 'SMARAGD'	EMERALD GREEN CEDAR	2M HT; B&B
VO	75	VACCINIUM OVATUM	EVERGREEN HUCKLEBERRY	#3 POT; 60CM
GRASS				
RF	182	CALAMAGROSTIS ACUTIFLORA 'KARL FOERSTER'	FEATHER REED GRASS	#1 POT
CL	1250	CAREX OSHIMENSIS 'EVERGOLD'	EVERGOLD JAPANESE SEDGE	#1 POT
HA	746	HAKONECHLOA MACRA 'ALL GOLD'	GOLDEN JAPANESE FOREST GRASS	#1 POT
HS	119	HELIOTRICHON SEMPERVIRENS	BLUE OAT GRASS	#1 POT
ST	29	STIPA TENUISSIMA	MEXICAN FEATHER GRASS	#1 POT
PERENNIAL				
LA	12	LAVENDULA ANGUSTIFOLIA 'MUNSTEAD'	ENGLISH LAVENDER; COMPACT; VIOLET-BLUE	#1 POT
RU	22	RUDBECKIA FULGIDA VAR SULLIVANTII 'GOLDSTURM'	RUDBECKIA; YELLOW	15CM POT
TH	178	THYMUS SERPHYLLUM	CREeping THYME	9CM POT
GC				
U	399	ARCTOSTAPHYLOS UVA-URSI 'MASSACHUSETTS'	KINNICKINICK	#1 POT; 20CM
ES	76	BLECHNUM SPICANT	DEER FERN	#1 POT; 20CM
FR	140	CYRTOMIUM FORTUNEI	FORTUNE'S COLD HARDY HOLLY FERN	#2 POT; 45CM
MA	71	MAHONIA REPENS	CREeping MAHONIA	#2 POT; 25CM
PO	459	POLYSTICHUM MUNITUM	WESTERN SWORD FERN	#1 POT; 25CM
V	262	VACCINIUM VITIS IDAEA	LINGONBERRY	#1 POT; 25CM

NOTES: * PLANT SIZES IN THIS LIST ARE SPECIFIED ACCORDING TO THE BC LANDSCAPE STANDARD AND CANADIAN LANDSCAPE STANDARD, LATEST EDITION. CONTAINER SIZES SPECIFIED AS PER CNLA STANDARD. BOTH PLANT SIZE AND CONTAINER SIZE ARE THE MINIMUM ACCEPTABLE SIZES. * REFER TO SPECIFICATIONS FOR DEFINED CONTAINER MEASUREMENTS AND OTHER PLANT MATERIAL REQUIREMENTS. * SEARCH AND REVIEW: MAKE PLANT MATERIAL AVAILABLE FOR OPTIONAL REVIEW BY LANDSCAPE ARCHITECT AT SOURCE OF SUPPLY. AREA OF SEARCH TO INCLUDE LOWER MAINLAND AND FRASER VALLEY. * SUBSTITUTIONS: OBTAIN WRITTEN APPROVAL FROM THE LANDSCAPE ARCHITECT PRIOR TO MAKING ANY SUBSTITUTIONS TO THE SPECIFIED MATERIAL. UNAPPROVED SUBSTITUTIONS WILL BE REJECTED. ALLOW A MINIMUM OF FIVE DAYS PRIOR TO DELIVERY FOR REQUEST TO SUBSTITUTE. SUBSTITUTIONS ARE SUBJECT TO BC LANDSCAPE STANDARD AND CANADIAN LANDSCAPE STANDARD - DEFINITION OF CONDITIONS OF AVAILABILITY. * ALL LANDSCAPE MATERIAL AND WORKMANSHIP MUST MEET OR EXCEED BC LANDSCAPE STANDARD AND CANADIAN LANDSCAPE STANDARD LATEST EDITION. * ALL PLANT MATERIAL MUST BE PROVIDED FROM CERTIFIED DISEASE FREE NURSERY. * BIO-SOLIDS NOT PERMITTED IN GROWING MEDIUM UNLESS AUTHORIZED BY LANDSCAPE ARCHITECT.

COPYRIGHT RESERVED. ALL PARTS OF THIS DRAWING ARE THE EXCLUSIVE PROPERTY OF WA ARCHITECTS LTD. AND SHALL NOT BE USED WITHOUT THE ARCHITECT'S PERMISSION. ALL DIMENSIONS SHALL BE VERIFIED BY THE CONTRACTOR BEFORE COMMENCING WORK.

OWNER/CLIENT:

CONSULTANT:

pmg
LANDSCAPE ARCHITECTS

Suite C100 - 4185 Still Creek Drive
Burnaby, British Columbia, V5C 6G9
p: 604 294-0011 ; f: 604 294-0022

NO.	Y/M/D	ISSUE	BY
16	23.AUG.21	RE-ISSUED FOR DP/MA	CW
15	22.OCT.15	ISSUED FOR TENDER	MC
14	22.OCT.04	ISSUED FOR BP	CW
13	22.SEP.16	ISSUED FOR BP REVIEW	CW
12	22.MAY.16	ISSUED FOR PRICING	CW
11	21.OCT.14	REVISED PER STREET TREE NOTATION	CW
10	21.12.07	REVISED PER CEDAR HILL CHANGES	CW
9	21.JUL.14	RE-ISSUED FOR DP	CW
8	21.MAY.07	NOTES ADDED/ RE-ISSUED FOR DP	CW
7	20.JUL.17	RE-ISSUED FOR DP	CW
6	20.MAY.04	ISSUED FOR DP	CW
5	19.OCT.01	REVISED FOR DP AND REZONING	CW
4	18.OCT.05	REVISED FOR DP AND REZONING	CW
3	18.SEP.28	REV. PER NEW SITE PLAN	CW
2	18.JUL.27	REV. PER NEW CIVIL PLANS	CW
1	18.JUN.18	REVISED PER CITY COMMENTS	CW

SEAL:

ARCHITECT:

WA ARCHITECTS

144 Alberni Street Vancouver, V6G 2Z4
V1C 104 - 2212 Jaxton Road Victoria, V8B 0J5
604.685.3529 | office@wa-arch.ca | wa-arch.ca

PROJECT NAME:
UNIVERSITY HEIGHTS SHOPPING CENTRE MIXED-USE

PROJECT ADDRESS:
3956 SHELBOURNE STREET
SAANICH, BC V8N 3E2

DRAWING TITLE:
LANDSCAPE DETAILS

PROJECT NO: 22-214 DRAWN BY: CW
SCALE: AS NOTED REVIEW BY: CW
DWG NO: 22214-2D/PM/01

RECEIVED
OCT 6 2023
PLANNING DEPT.
DISTRICT OF SAANICH