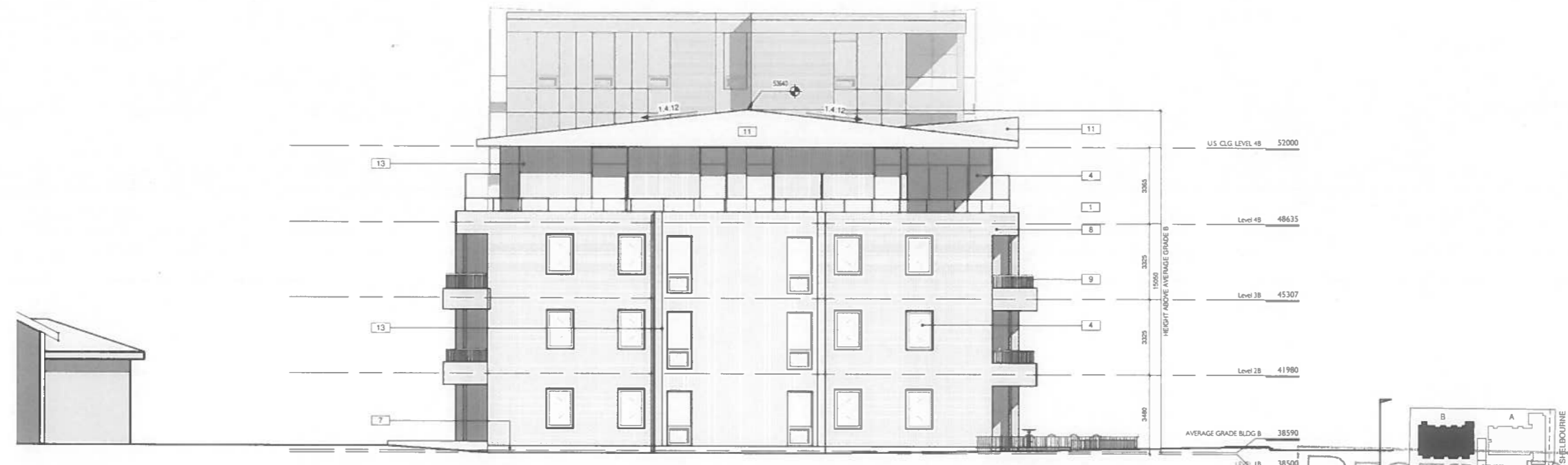


1 Elevation BLDG B East
1 : 100



2 Elevation BLDG B West
1 : 100



CASCADIA ARCHITECTS INC
1060 Meares Street
Victoria BC V8V 3J6 Canada
T 250.590.3223 office@cascadiaarchitects.ca
F 250.593.3226 www.cascadiaarchitects.ca

Key Value	Keynote Text
1	Laminated Glass Guardrail
2	Prefinished Metal Flashing
3	Prefinished panelized Metal Cladding Colour 1
4	Vinyl Window System
5	Prefinished Metal Cladding Colour 2 (Horizontal Rib)
6	Sand Float Stucco Colour 3
7	Exposed Clear Sealed Concrete
8	Clear Sealed Brick Colour 4
9	Prefinished Aluminum Picket Rail Colour 5
10	Prefinished Aluminum
11	Standing Seam Roofing Colour 6
12	Prefinished Panelized Metal Cladding Colour 7
13	Vertical Wood Grain Finish Cladding Colour 8

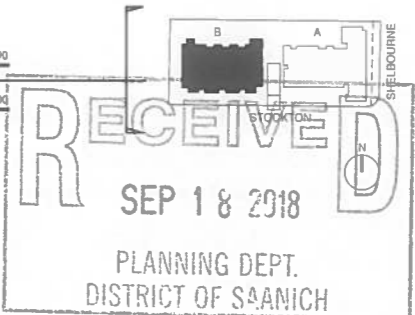
NO.	DESCRIPTION	DATE
-----	-------------	------

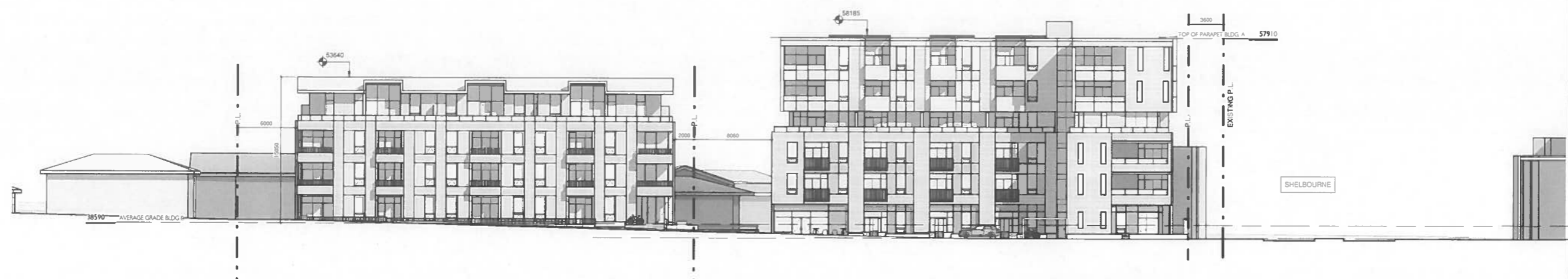
BUILDING B ELEVATIONS

PROJECT
DP SUBMISSION
TRI-EAGLE DEVELOPMENT
3914 SHELBOURNE STREET
SAANICH BC

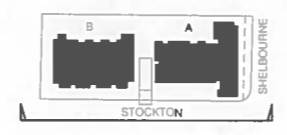
Copyright reserved. These drawings and the design contained therein or which may be inferred therefrom are, and at all times remain, the exclusive property of Cascadia Architects Inc. Cascadia Architects Inc. holds the copyright and ownership in the said drawings, which cannot be used for any purpose without the express written consent of Cascadia Architects.

PROJECT NUMBER		Date
1708		2018/09/12
CHECKED BY	DRAWN BY	
GD	mp	
REV		
DWG NO		AB 4.1

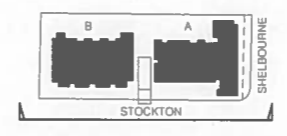




1 CONTEXT ELEVATION STOCKTON
 1 : 200



2 CONTEXT ELEVATION NORTH
 1 : 200



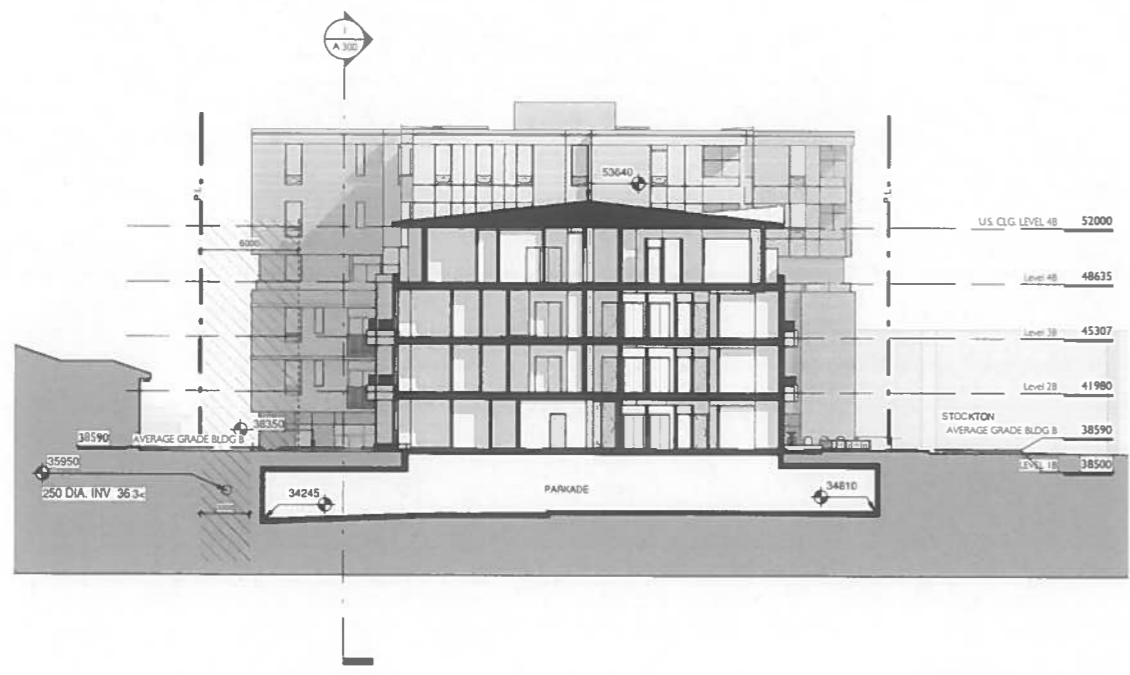
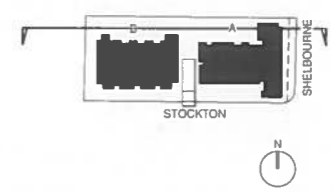
3 CONTEXT ELEVATION SHELBOURNE
 1 : 200

RECEIVED
 SEP 1 & 2018
 PLANNING DEPT.
 DISTRICT OF SAANICH

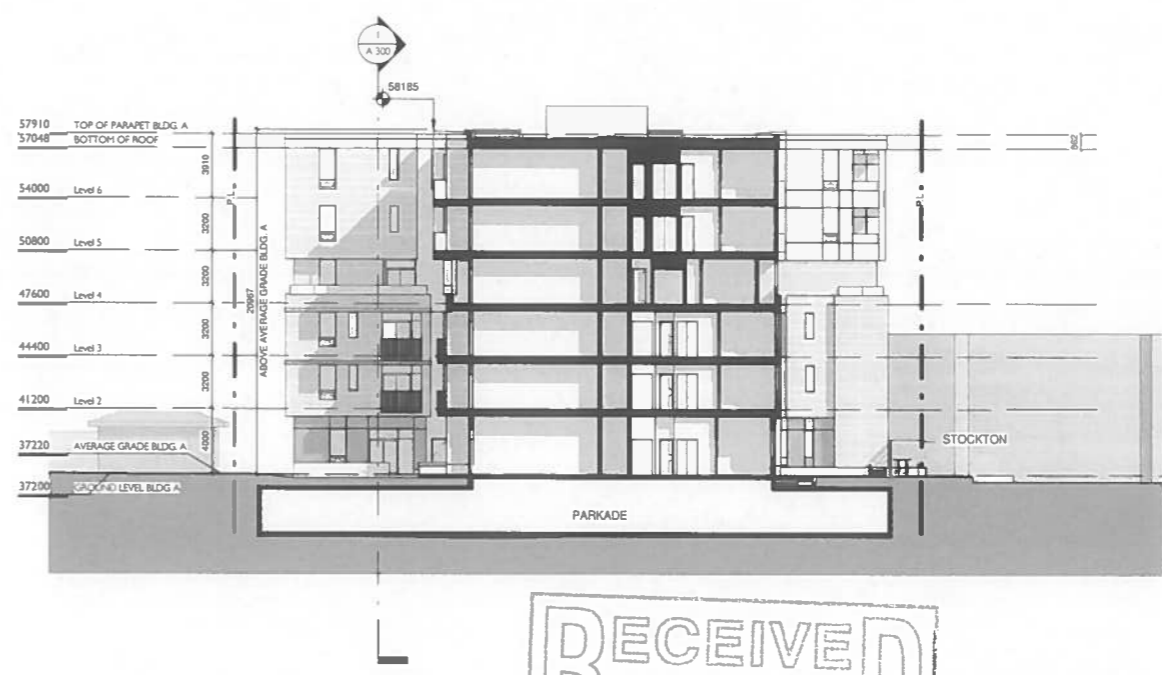
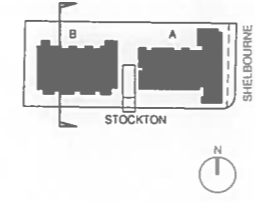
No	DESCRIPTION	DATE
DRAWING: CONTEXT ELEVATIONS		
PROJECT: DP SUBMISSION		
TRI-EAGLE DEVELOPMENT 3914 SHELBOURNE STREET SAANICH BC		
<small>Copyright reserved. These drawings and the design contained therein or which may be related thereto are, and at all times remain, the exclusive property of Cascadia Architects Inc. Cascadia Architects Inc. holds the copyright and ownership in the said drawings, which cannot be used for any purpose without the express written consent of Cascadia Architects.</small>		
SCALE	DATE	
1 : 200	2018/09/12	
PROJECT NUMBER	CHECKED BY	DRAWN BY
1708	GD	mp
REV		
DWG NO	A 200	



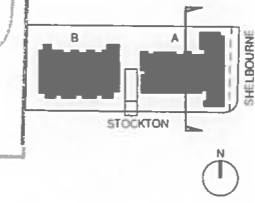
1 SECTION SITE W-E
1 : 200



2 SECTION SITE N-S AT BLDG B
1 : 200



3 SECTION SITE N-S AT BLDG A
1 : 200



RECEIVED
 SEP 1 & 2018
 PLANNING DEPT.
 DISTRICT OF SAANICH

NO.	DESCRIPTION	DATE
DRAWING SITE SECTIONS		
PROJECT DP SUBMISSION		
TRI-EAGLE DEVELOPMENT		
3914 SHELBOURNE STREET		
SAANICH BC		
Copyright reserved. These drawings and the design contained therein or which may be referred to hereon are, and as all times remain, the exclusive property of Cascadia Architects Inc. Cascadia Architects holds the copyright and ownership in the said drawings, which cannot be used for any purpose without the express written consent of Cascadia Architects.		
SCALE		1 : 200
PROJECT NUMBER	Date	
1708	2018/09/12	
CHECKED BY	DRAWN BY	
GD	mp	
REV		
DWG NO		A 300