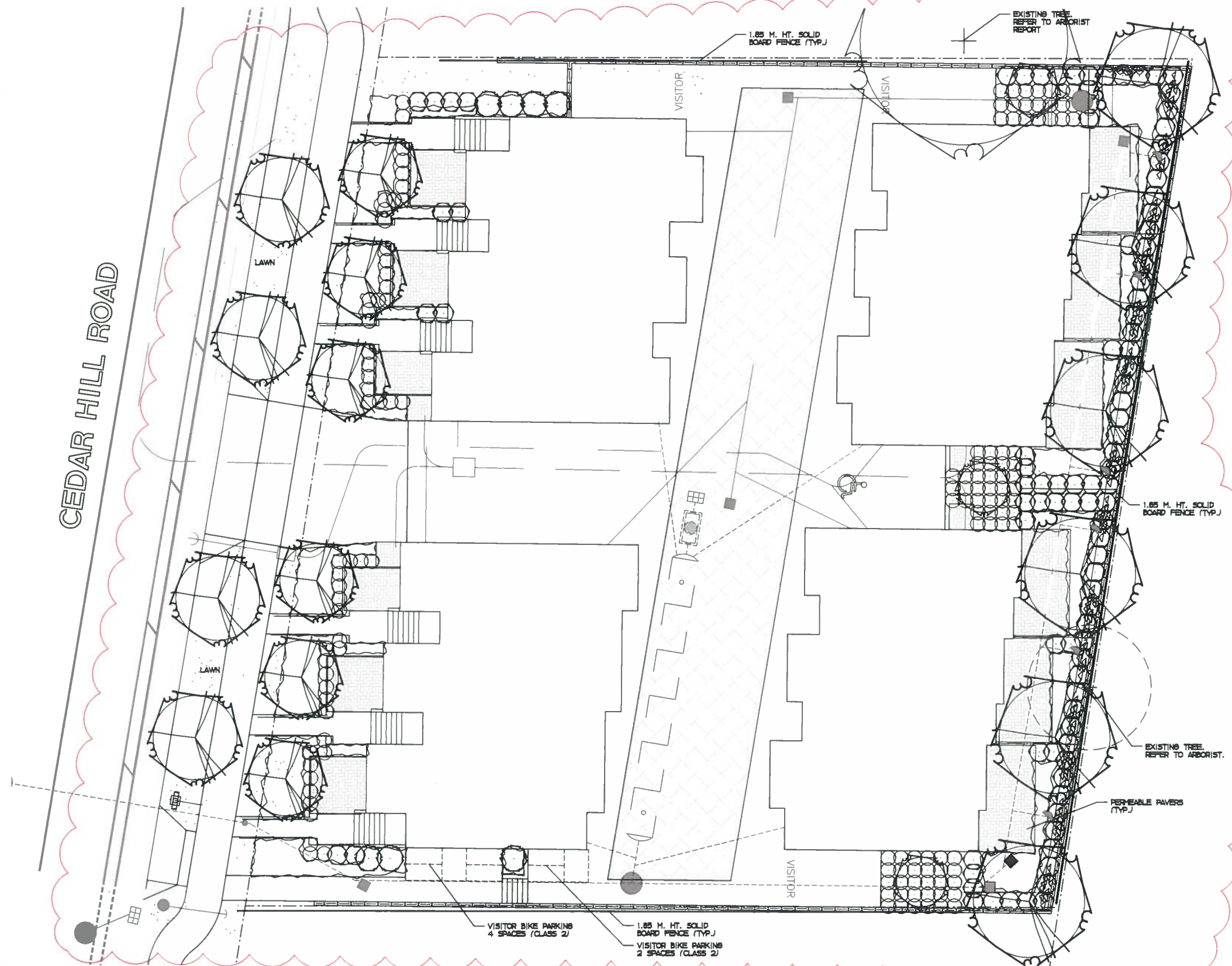
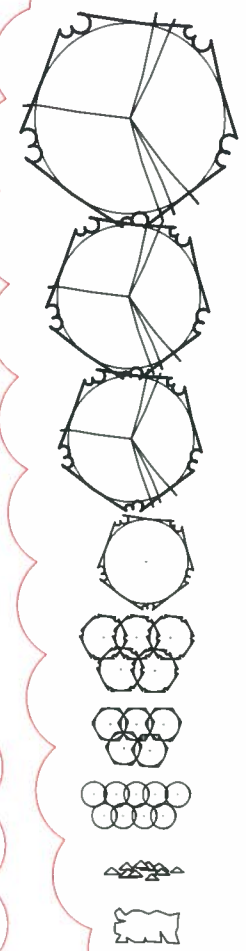


CEDAR HILL ROAD



LEGEND



MEDIUM DECIDUOUS TREE TO BE A SELECTION OF:
RED MAPLE, KATSURRA TREE, HEDGE MAPLE, HONEY
SUCKER,
SIZE 6.0 CM CAL., APPROXIMATE NO. - 06

SMALL DECIDUOUS TREE TO BE SAANICH STREET
TREE SELECTION JAPANESE SNOWBALL TREE
SIZE 6.0 CM CAL., APPROXIMATE NO. - 04

COLUMNAR DECIDUOUS TREE TO BE A SELECTION OF:
COLUMNAR GOLD MAPLE, COLUMNAR RED MAPLE,
SIZE: 6.0 CM CAL., 4.5-5.5 M HT.,
APPROXIMATE NO. - 06

MULTI-STEM TREE TO BE A SELECTION OF:
FLOWERING CURRENT (DEC), HARD HACK (DEC),
SIZE 27 CM POT, APPROXIMATE NO. - 03

LARGE SHRUB TO BE A SELECTION OF:
GLOSSY ABELIA (FL), MEXICAN ORANGE (FL),
NORTON ROSE (DEC), WOOD'S ROSE (DEC),
SIZE 27 CM POT, APPROXIMATE NO. - 12

MEDIUM SHRUB TO BE A SELECTION OF:
OREGON GRAPE (FL), PINK ESCALLONIA (FL),
BARBERRY (FL), BUDS (FL), SWORD FERNS (FL),
SIZE 21 CM POT, APPROXIMATE NO. - 99

SMALL SHRUB TO BE A SELECTION OF: LONG LEAF
MAGNOLIA (FL), EDWARD BOUCHER ABELIA (FL),
LAVENDER (FL), GOLD PLUME SPIREA (DEC),
POTENTILLA (FL), DEER FEET (FL),
SIZE 15 CM POT, APPROXIMATE NO. - 148

VINES TO BE A SELECTION OF:
BREITMANN IVY (DEC), CLIMBING HYDRANGEA (DEC),
SIZE 21 CM POT, APPROXIMATE NO. - 15

GROUNDCOVER TO BE A SELECTION OF:
KINKIDUCK (FL), WINTERGREEN (FL),
SIBBIE (FL), GRASSES (DEC),
SIZE 10 CM POT, PLANT 48 CM O.C.

NOTES

- LANDSCAPE AREAS ARE TO BE IRRIGATED WITH A FULLY AUTOMATIC UNDERGROUND IRRIGATION SYSTEM.
- TREES TO BE IRRIGATED SEPARATELY FROM PLANTING AND LAWN AREA.
- ALL LANDSCAPE AND IRRIGATION ON BOULEVARD TO SAANICH CURRENT STANDARDS & APPROVAL.
- BOULEVARD TREES TO HAVE MIN. 8.0 M3 TOPSOIL/STRUCTURAL SOIL VOLUME PER TREE. ROOT BARRIERS TO BE INSTALLED ADJACENT TO SIDEWALKS & UTILITIES AS REQUIRED.
- BOULEVARD TREE IRRIGATION TO BE PROVIDED BY DEVELOPER.
- THIS DRAWING IS CONCEPTUAL ONLY AND NOT INTENDED FOR CONSTRUCTION PURPOSES.
- THIS DRAWING IS FOR SOFT LANDSCAPE ONLY.



PRELIMINARY PLAN IP1

NO.	DATE	BY	REVISION
1.	DEC.17.21	S.P.	PLANNING COMMENTS
S.P.			
J.P.			
OCTOBER 19, 2020			
8907-09-PIR4R.DWG			
1776 2D 01			

Lombard North Group (INC) INC.
434 COMMUNITY STREET
VICTORIA, BRITISH COLUMBIA, V8W 1R1
TELEPHONE: (250) 386-1234
FAX: (250) 386-4112
EMAIL: lombard@lombard.ca

3907/ 3909 CEDAR HILL
VICTORIA, B.C.

1 : 100