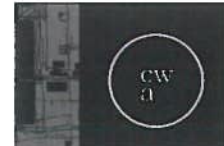


RECEIVED  
DEC 01 2021  
PLANNING DEPT.  
CITY OF SAANICH

REGISTERED ARCHITECT  
CAROLYNN WILSON  
BRITISH COLUMBIA

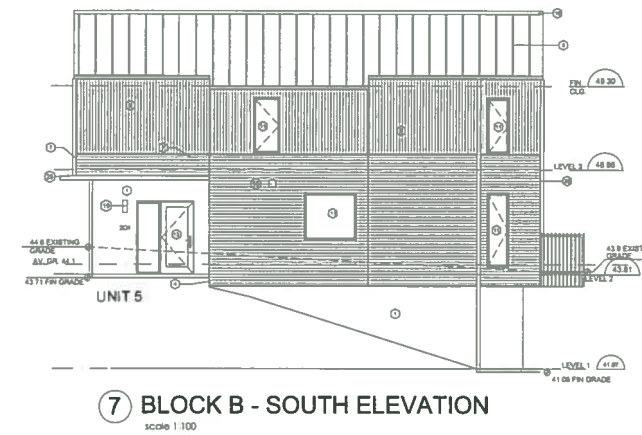


carolynn wilson architect ltd.  
924b richmond ave  
victoria, bc, v8s3z3  
carolynnwilson@me.com  
www.carolynnwilsonarchitect.com

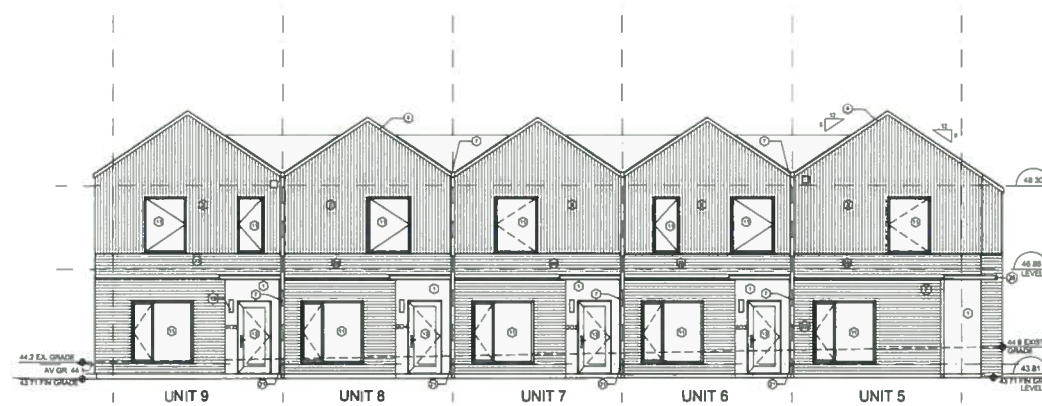
3834 OPHIR ST TOWNHOUSES . ELEVATIONS BLOCK A. NOV 13, 2021



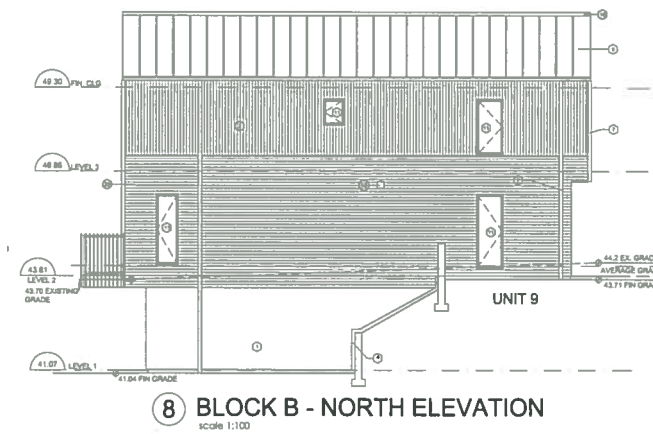
5 BLOCK B - EAST ELEVATION  
scale 1:100



7 BLOCK B - SOUTH ELEVATION  
scale 1:100



6 BLOCK B - WEST ELEVATION  
scale 1:100



8 BLOCK B - NORTH ELEVATION  
scale 1:100



3834 OPHIR ST TOWNHOUSES . ELEVATIONS BLOCK B. NOV 15, 2021



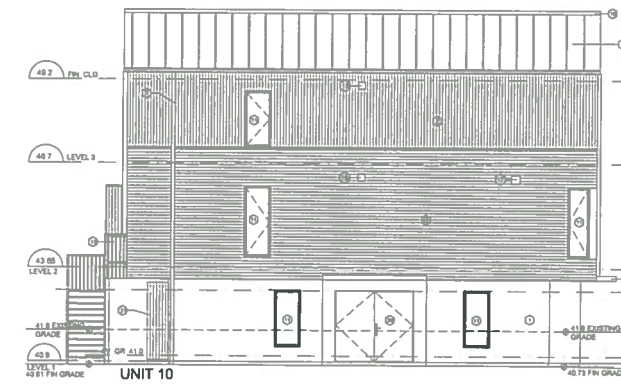
carolynn wilson architect ltd.  
924b richmond ave  
victoria, bc, v8s3z3  
carolynnwilson@me.com  
www.carolynnwilsonarchitect.com







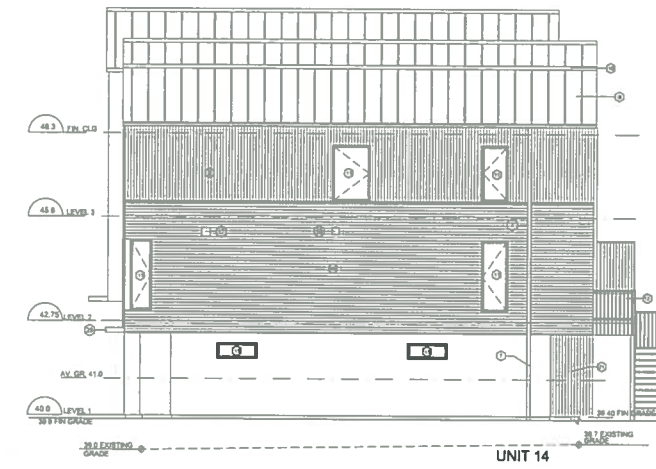
9 BLOCK C - SOUTH ELEVATION  
scale 1:100



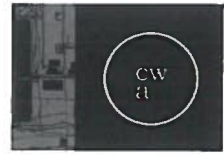
11 BLOCK C - WEST ELEVATION  
scale 1:100



10 BLOCK C - NORTH ELEVATION  
scale 1:100



12 BLOCK C - EAST ELEVATION  
scale 1:100



carolynn wilson architect ltd.  
924b richmond ave  
victoria, bc, v8s3z3  
carolynnwilson@me.com  
www.carolynnwilsonarchitect.com

3834 OPHIR ST TOWNHOUSES . ELEVATION BLOCK C. NOV 15, 2021