

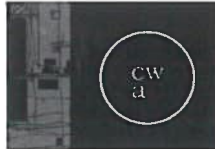
SITE PLAN scale 1:200

3834 OPHIR ST TOWNHOUSES . SITE PLAN . NOV 15, 2021

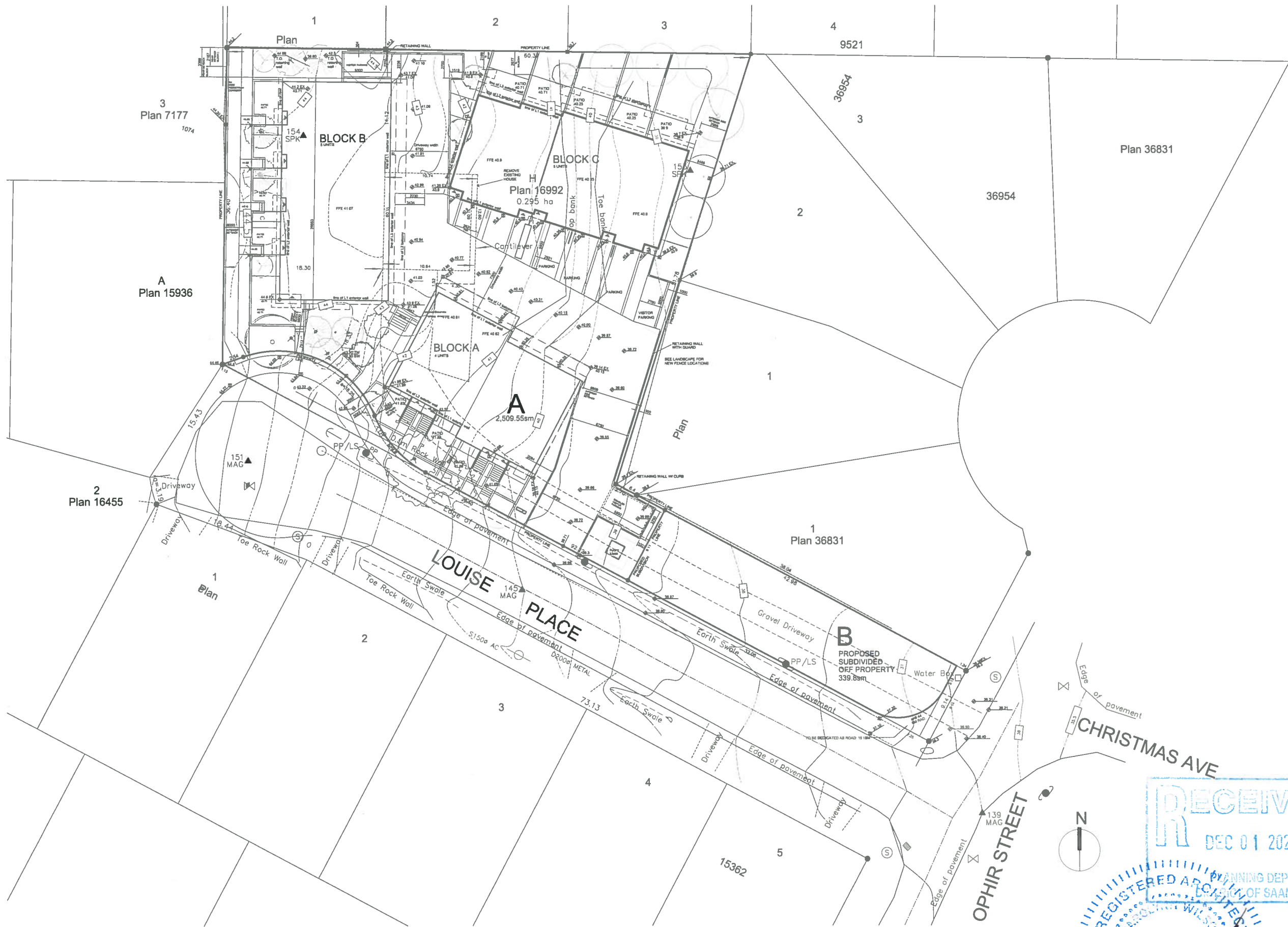
RECEIVED
 DEC 01 2021
 PLANNING DEPT.
 DISTRICT OF SAANICH

REGISTERED ARCHITECT
 CAROLYNN WILSON
 CAROLYNN WILSON
 BRITISH COLUMBIA

1.1



carolynn wilson architect ltd.
 924b richmond ave
 victoria, bc, v8s3z3
 carolynnwilson@me.com
 www.carolynnwilsonarchitect.com



SUBDIVISION SITE PLAN scale 1:200

3834 OPHIR ST TOWNHOUSES . SUBDIVISION SITE PLAN . NOV 15, 2021

RECEIVED
 DEC 01 2021
 PLANNING DEPT.
 CITY OF SAANICH

REGISTERED ARCHITECT
 CAROLYNN WILSON
 BRITISH COLUMBIA
 1.1



carolynn wilson architect ltd.
 924b richmond ave
 victoria, bc, v8s3z3
 carolynnwilson@me.com
 www.carolynnwilsonarchitect.com