

Keynote Legend 2

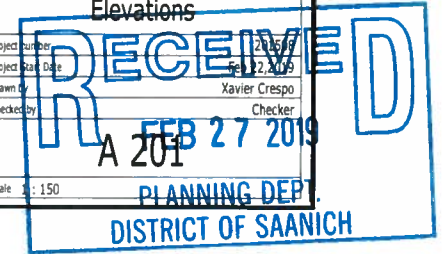
Key Value	Keynote Text
1	Brick
2	Metal Railing
3	Tempered Glazing
4	Vinyl Windows
5	Metal Fascia
6	High Density Fibre cement panel

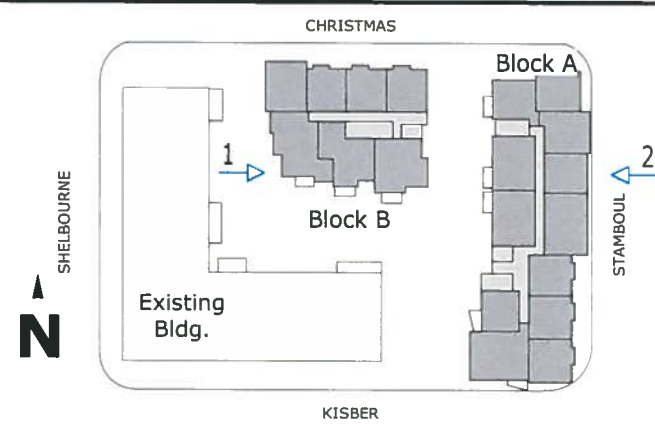
① Elevation Christmas Ave. NORTH
1 : 150



② Elevation Kisber Ave. SOUTH
1 : 150

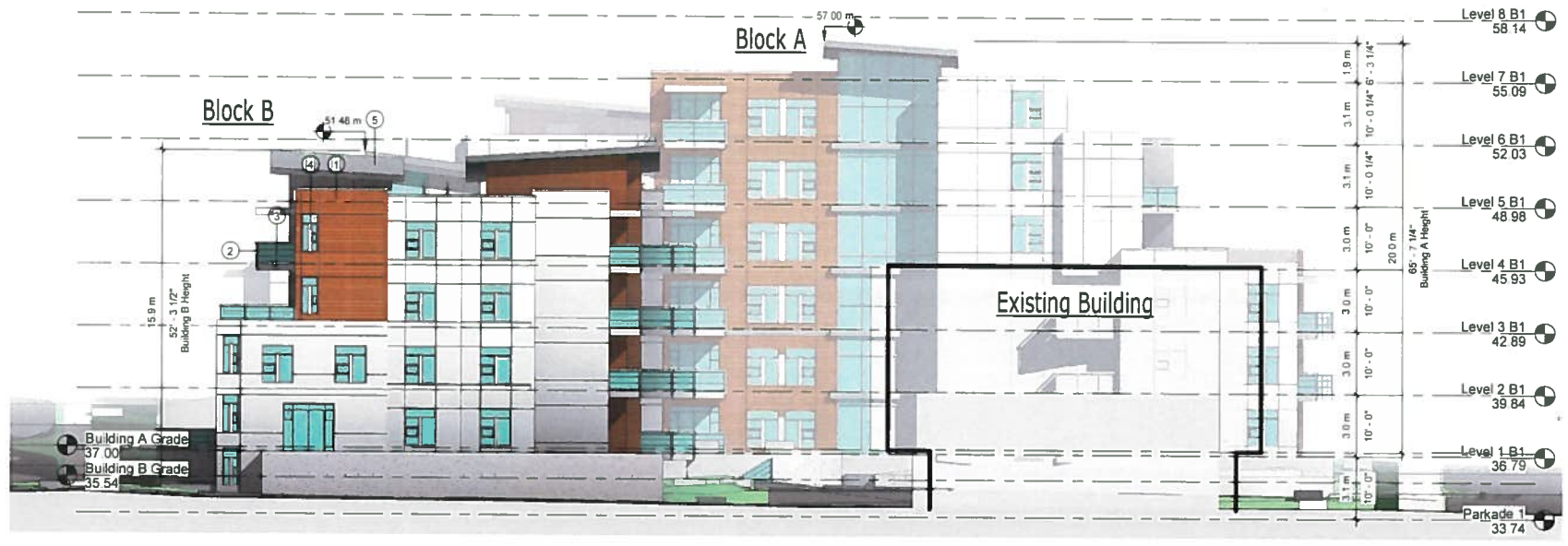
No.	Date	Description
	Feb 22, 2019	Re-submission of Rezoning Canmed Investments Inc. KISBER & SHELBOURNE
Elevations		
Project Number	201508	
Project Start Date	Feb 22, 2019	
Drawn by	Xavier Crespo	Checker
Checked by		
Scale	1 : 150	





Keynote Legend 2

Key Value	Keynote Text
1	Brick
2	Metal Railing
3	Tempered Glazing
4	Vinyl Windows
5	Metal Fascia
6	High Density Fibre cement panel



① Elevation Internal Driveway WEST
 1 : 150



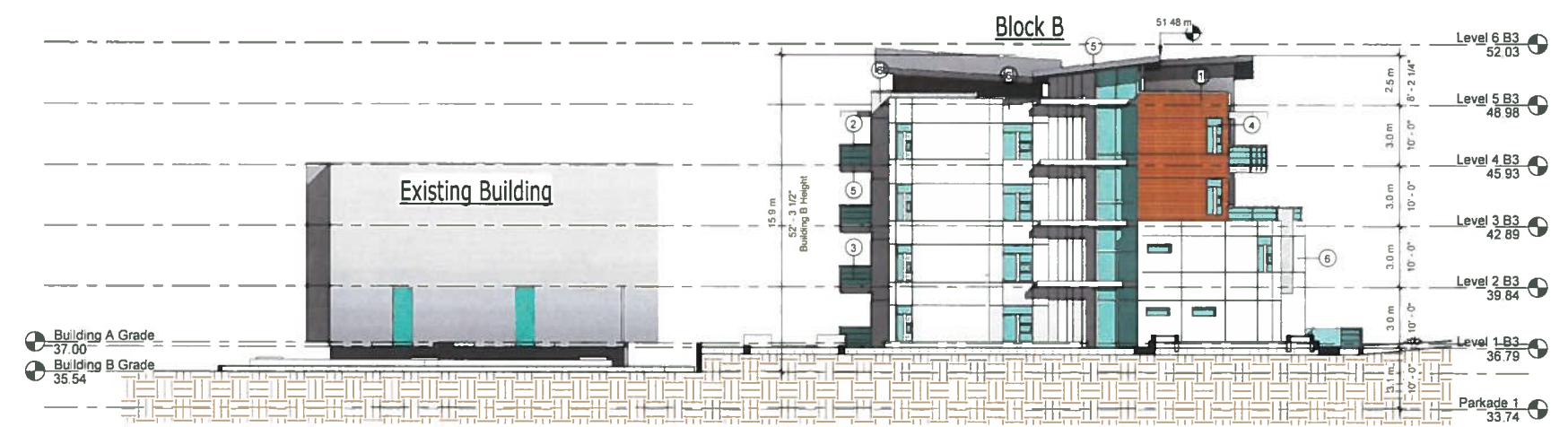
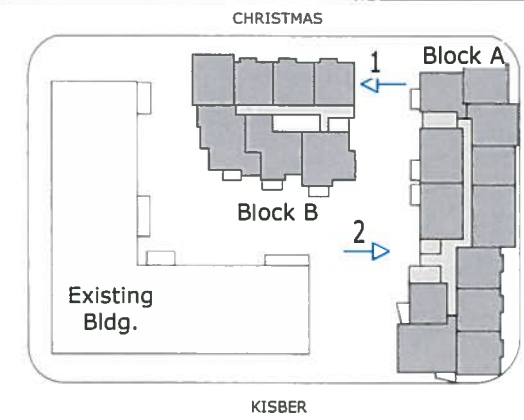
② Elevation Stamboul St. EAST
 1 : 150

No.	Date	Description
1	2017 28 31	Units facing Stamboul setback increased

Feb 22, 2019
 Re-submission of Rezoning
 Canmed Investments Inc.
 KISBER & SHELBOURNE

Elevations

RECEIVED
 FEB 27 2019
 PLANNING DEPT.
 DISTRICT OF SAANICH



① Elevation Podium Block A
1 150



② Elevation Podium Block B
1 150

Keynote Legend 2

Key Value	Keynote Text
1	Brick
2	Metal Railing
3	Tempered Glazing
4	Vinyl Windows
5	Metal Fascia
6	High Density Fibre cement panel

No.	Date	Description
	Feb 22, 2019	Re-submission of Rezoning Canmed Investments Inc. KISBER & SHELBOURNE

Feb 22, 2019
 Re-submission of Rezoning
 Canmed Investments Inc.
 KISBER & SHELBOURNE

Elevations

Project number: 201508
 Project Start Date: Feb 22, 2019
 Drawn by: Xavier Crespo
 Checked by: [Signature] Checker

RECEIVED
 FEB 27 2019
 A 203
 PLANNING DEPT.
 DISTRICT OF SAANICH