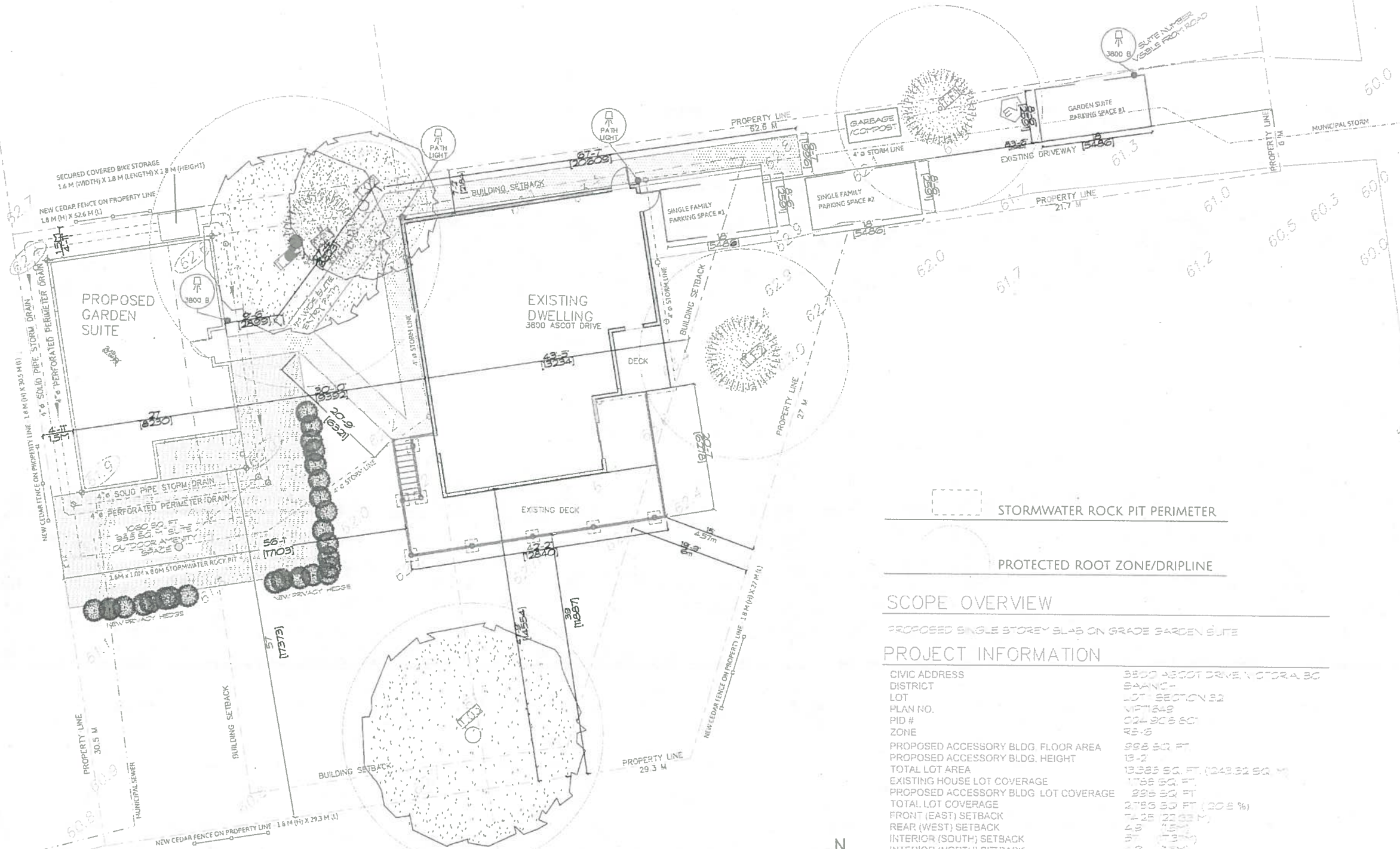


LANDSCAPE PLAN



1 LANDSCAPE PLAN
SCALE: 1:100

TREE SCHEDULE

TAG	SPECIES	DBH	PRZ
TF1	DOUGL-AS-FR	25.6 (0.83M)	35.4 (1.14M)
TF2	DOUGL-AS-FR	17.7 (0.58M)	26.6 (0.87M)
TP1	PINE	1.9 (0.62M)	1.6 (0.52M)
T.O1	OAK	25.8 (0.85M)	33.4 (1.09M)
T.O2	OAK	15.3 (0.50M)	23.8 (0.78M)
T.O3	OAK	25.4 (0.83M)	33.7 (1.11M)



SCOPE OVERVIEW

PROPOSED SINGLE STOREY SLAB ON GRADE GARDEN SUITE

PROJECT INFORMATION

CIVIC ADDRESS	3800 ASCOT DRIVE, VICTORIA, BC
DISTRICT	SAANICH
LOT	LOT 1 SECTION 82
PLAN NO.	V171829
PID #	024 906 607
ZONE	RS-6
PROPOSED ACCESSORY BLDG. FLOOR AREA	998 SQ. FT.
PROPOSED ACCESSORY BLDG. HEIGHT	13'-2"
TOTAL LOT AREA	13,383 SQ. FT. (1,243.32 SQ. M)
EXISTING HOUSE LOT COVERAGE	1,788 SQ. FT.
PROPOSED ACCESSORY BLDG. LOT COVERAGE	998 SQ. FT.
TOTAL LOT COVERAGE	2,786 SQ. FT. (20.8%)
FRONT (EAST) SETBACK	1'-2" (0.30M)
REAR (WEST) SETBACK	4'-9" (1.45M)
INTERIOR (SOUTH) SETBACK	5'-7" (1.70M)
INTERIOR (NORTH) SETBACK	4'-9" (1.45M)
DISTANCE FROM MAIN HOUSE	20'-0" (6.10M)
REAR YARD AREA	6,291 SQ. FT. (581.5 SQ. M)
GARDEN SUITE SITE COVERAGE (HARD SURFACES INCLUDED)	1,24 SQ. FT. (11.36 SQ. M) 22.47%
IMPERVIOUS SURFACE AREA OPEN SITE SPACE	685 SQ. FT. (63.64 SQ. M) 6,532 SQ. FT. (603.84 SQ. M) (48.88%)

ASCOT DRIVE

RECEIVED
OCT 18 2022
PLANNING DEPT.
DISTRICT OF SAANICH