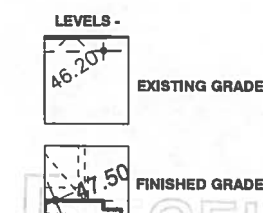


EXTERIOR FINISHES & NOTES :

- F1 HARDIE PANEL-ARCTIC WHITE
- F2 CEDAR WOOD SIDING
- F3 HARDIE PANELS - GRAY SLATE
- F4 COMPOSITE METAL PANELS-SLATE (DARK GRAY)
- F4A HARDIE PANEL-HIGHT GRAY. (SHOULD MATCH WITH METAL CLADDING SLATE (DARK GRAY & WITH PRE-FINISHED METAL))
- F5 HARDIE PANELS - IRON GRAY
- F6 TILE - GRAY COLOR
- F8 HARDIE PLANK - DARK GRAY COLOR
- F8A HARDIE PLANK - LIGHT GRAY COLOR
- F9 VINYL WINDOW/DOOR - WHITE
- F10 ALUMINUM PICKET FENCE - 3' 6" HIGH
- F11 CONCRETE
- F12 PRE-FINISHED METAL FLASHING (colour- same as adjacent colour)
- F13 PREFINISHED ALUMINUM GUARDRAILS w/ GLAZING



Copyright Reserved. These drawings are at all times the property of the Architect. Reproduction in whole or in part without written consent of the Architect is prohibited.

project no.:

issue / revisions:

No.	Issued / Revisions	Date
3	REVISIONS ON REZONING	07 JUNE 2021
2	REVISIONS ON REZONING	23 APR. 2021
1	FOR REZONING APPLICATION	08 DEC. 2020

alan lowe architect inc.
 #118 - 21 Erie Street, 1 250.360.2888
 Victoria, British Columbia



UPTOWN EAST
 3584 QUADRA STREET
 VICTORIA BC
 drawing title:
ELEVATIONS

project no.: 18-532
 date: 07 JUNE 2021 scale: AS NOTED
 checked by: LOWE drawn by: RM
 sheet no.:

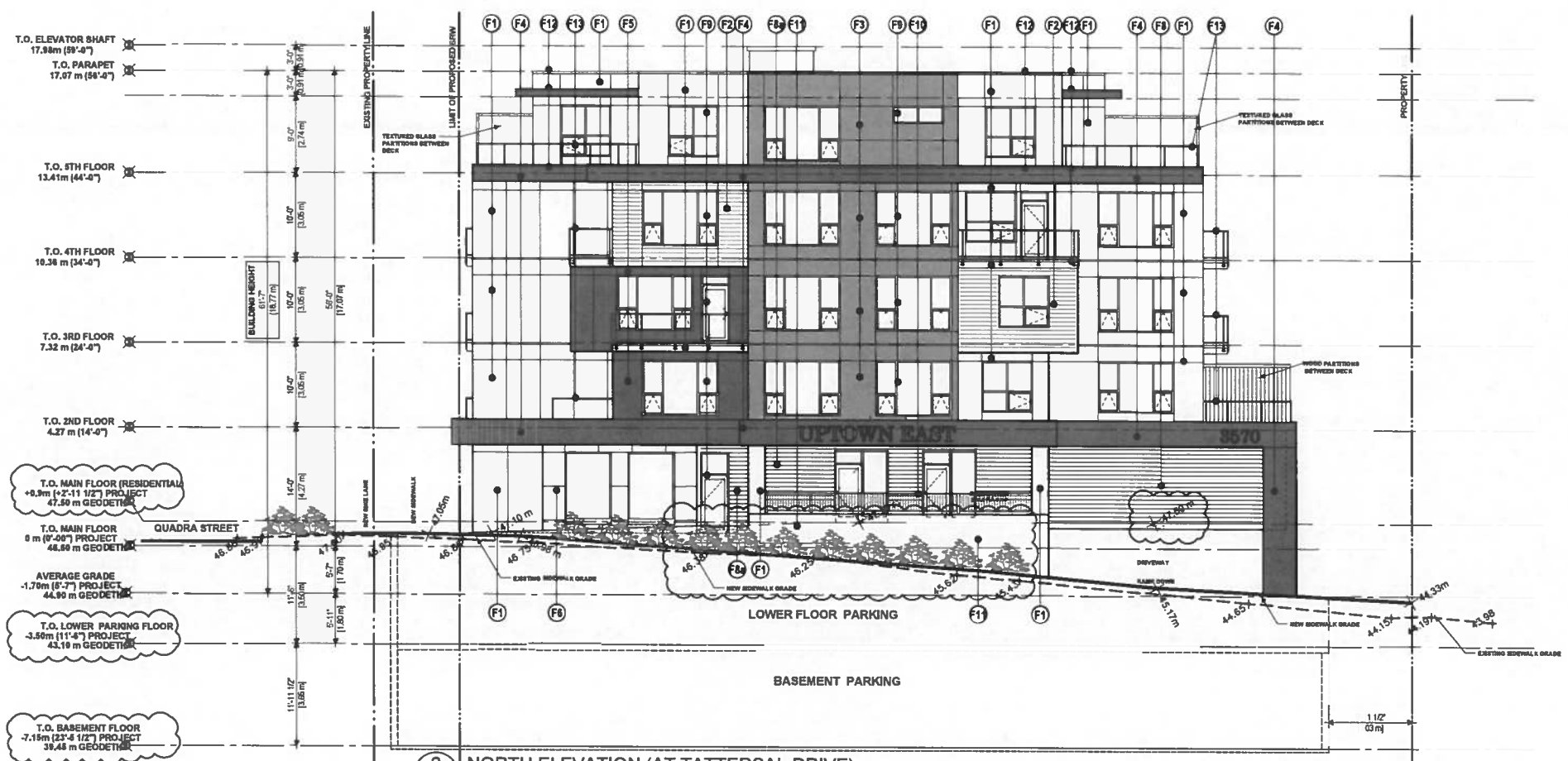
A3.1

Copyright Reserved: These drawings are at all times the property of the Architect. Reproduction in whole or in part without written consent of the Architect is prohibited.

consultants



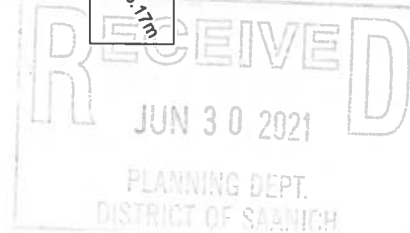
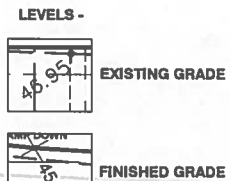
1 WEST (BACK) ELEVATION
A3.2 SCALE 1:100



2 NORTH ELEVATION (AT TATTERSAL DRIVE)
A3.2 SCALE 1:100

EXTERIOR FINISHES & NOTES :

- F1 CONCRETE
- F2
- F3
- F4 COMPOSITE METAL PANELS - SLATE (DARK GRAY)
- F4A HARDE PANEL - NIGHT GRAY - (SHOULD MATCH WITH METAL CLADDING SLATE (DARK GRAY & WITH PRE-FINISHED METAL))
- F5 HARDE PANELS - IRON GRAY
- F6 TILE - GRAY COLOR
- F8 HARDE PLANK - DARK GRAY COLOR
- F8A HARDE PLANK - LIGHT GRAY COLOR
- F9 VINYL WINDOW/DOOR - WHITE
- F11 ALUMINUM PICKET FENCE - 3' 6" HIGH
- F12 PRE-FINISHED METAL FLASHING (color - same as adjacent colour)
- F13 PREFINISHED ALUMINUM GUARDRAILS w/ GLAZING



project north:

issue / revisions:

3 REVISIONS ON REZONING	07 JUNE 2021
2 REVISIONS ON REZONING	23 APR 2021
1 FOR REZONING APPLICATION	06 DEC 2020
No. Issued / Revisions	Date

alan lowe architect inc.
#118 - 21 Erie Street, 1 250.360.2888
Victoria, British Columbia
seal



project title
UPTOWN EAST

3584 CUADRA STREET
VICTORIA BC
drawing title:
ELEVATIONS

project no.:	18-532
date	07 JUNE 2021
scale	AS NOTED
checked by:	LOWE
drawn by:	RM
sheet no.:	

A3.2