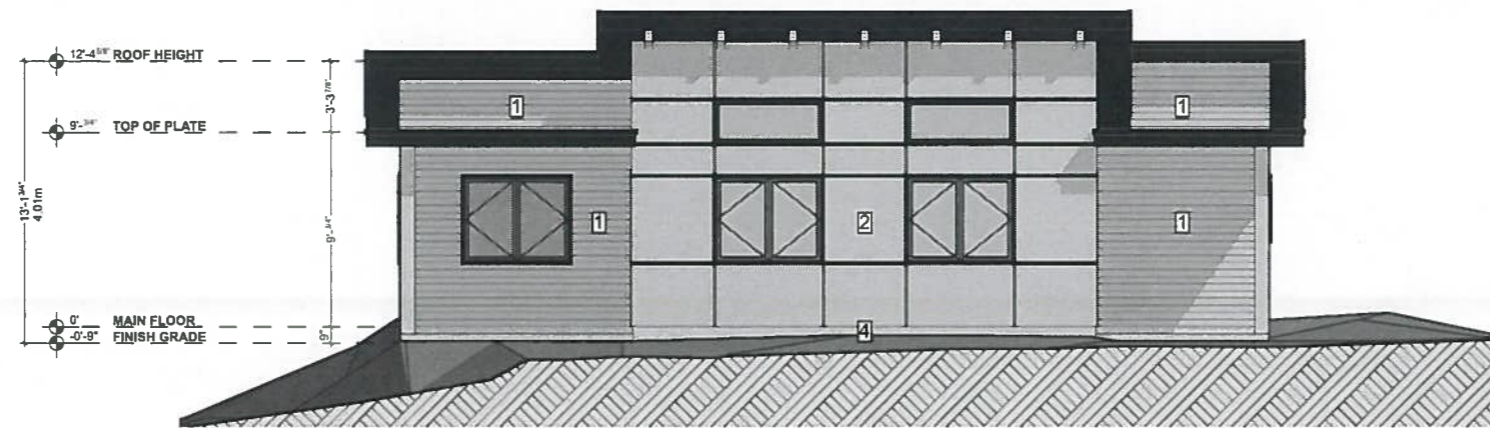
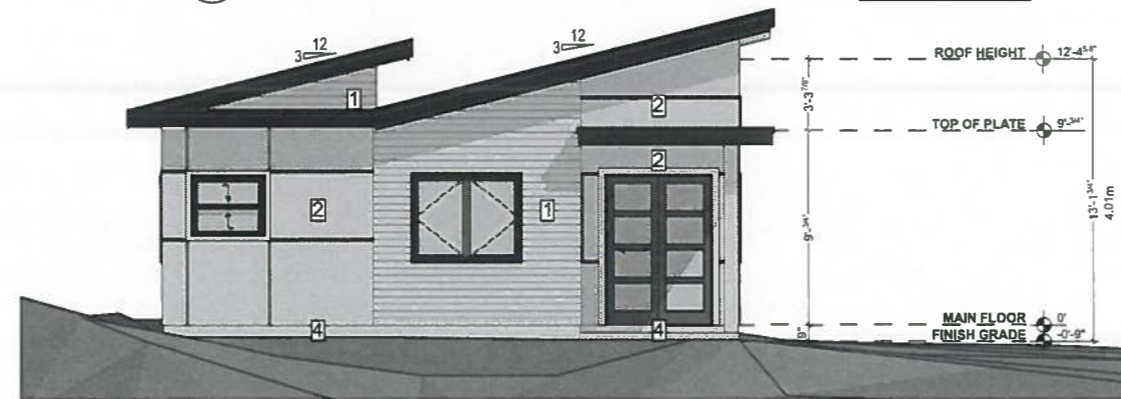


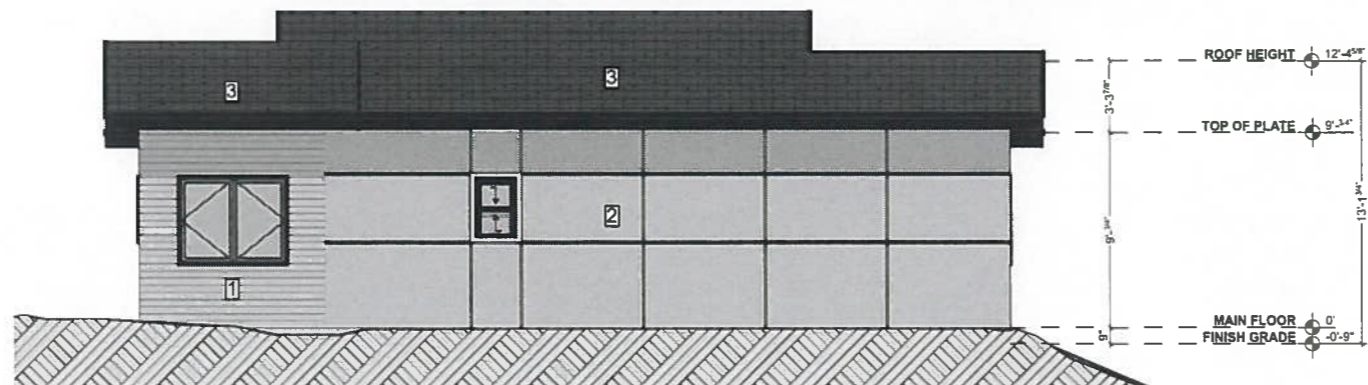
1 NORTH ELEVATION
SCALE 1/4" = 1'-0"



2 EAST ELEVATION
SCALE 1/4" = 1'-0"



3 SOUTH ELEVATION
SCALE 1/4" = 1'-0"



4 WEST ELEVATION
SCALE 1/4" = 1'-0"

EXTERIOR CLADDING LEGEND

- 1 CLEAR CEDAR SIDING STAINED
- 2 HARDIE PANEL W/ EZ TRIM
- 3 ASPHALT ROOFING SHINGLES
- 4 FINISHED CONCRETE PARGED

ADDITIONAL EXTERIOR FINISHINGS

CUTTERS: 1" CONTINUOUS ALUMINUM (PREFINISHED)
 SOFFIT: 1/2" X 1/2" ALUMINUM DOWNPOUT (PREFINISHED)
 FASCIA: 2X10 COMB FACED SPF (PAINTED)
 BELLY BAND: 2X8 COMB FACED SPF (PAINTED)
 WINDOW TRIM: SHEET METAL REVEALS (PREFINISHED)
 DOOR TRIM: SHEET METAL REVEALS (PREFINISHED)

NOTE:
 WINDOW OPERATION SHALL BE AS PER OWNERS DIRECTION AND CONFORMS TO MIN. CLEARANCE REQUIREMENTS. CONTRACTOR TO VERIFY ALL R.O.D. PRIOR TO ORDERING WINDOWS.
 FLASH OVER ALL MATERIAL TRANSITIONS, DOOR AND WINDOW HEADERS.
 ALL COLORS AS PER OWNER.

SPATIAL SEPARATION BCBC 9.10.15.4

LIMITING DISTANCE	2.04m
EXPOSING BUILDING FACE	39.25 sq m
ALLOWABLE OPENINGS	11.0%
PROPOSED OPENINGS	2.74 sq m
PERCENT OPENINGS	6.98%



1500 Shamcliffe Road Victoria BC Canada
 250.893.8127
 www.adaptdesign.ca

3501 CAMCREST GARDEN SUITE

Drawings and Specifications as instruments of service are and shall remain the property of Adapt Design. They are not to be used on extensions of the project or other projects, except by agreement in writing and appropriate compensation to the Designer.

The General Contractor is responsible for confirming and completing dimensions at the job site. The Designer will not be responsible for construction means, methods, techniques, sequences, or procedures, or for safety precautions and programs in connection with the project.

© Adapt Design

ISSUED FOR PERMIT

ISSUED:

ELEVATIONS
A-201