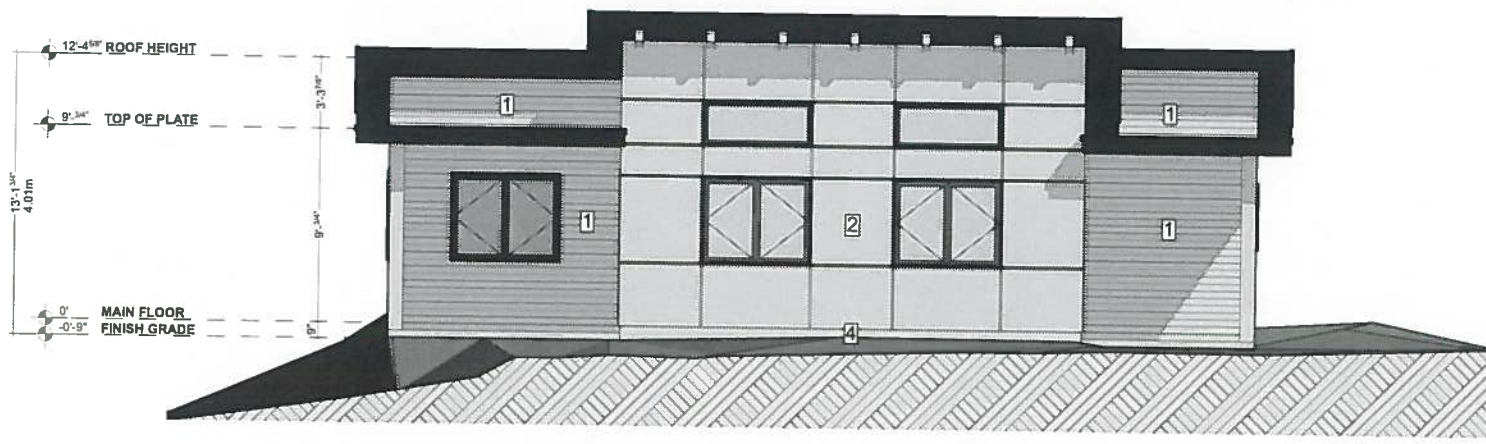
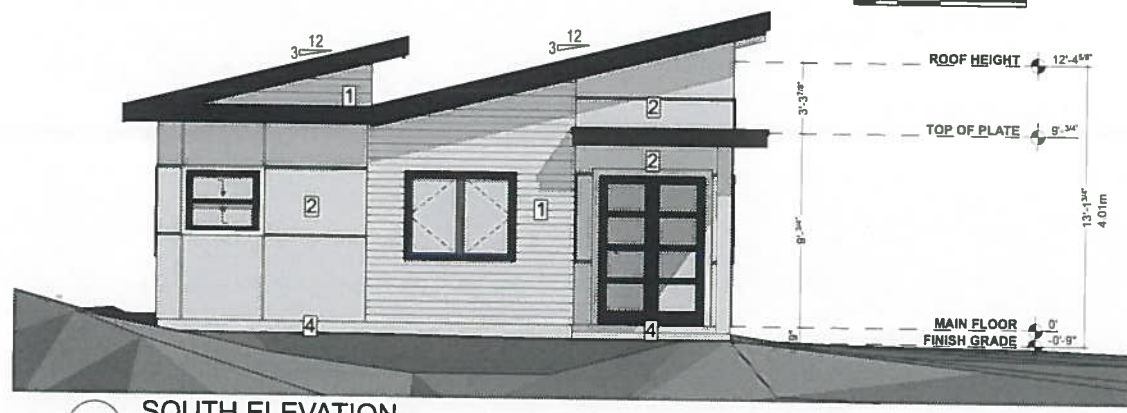


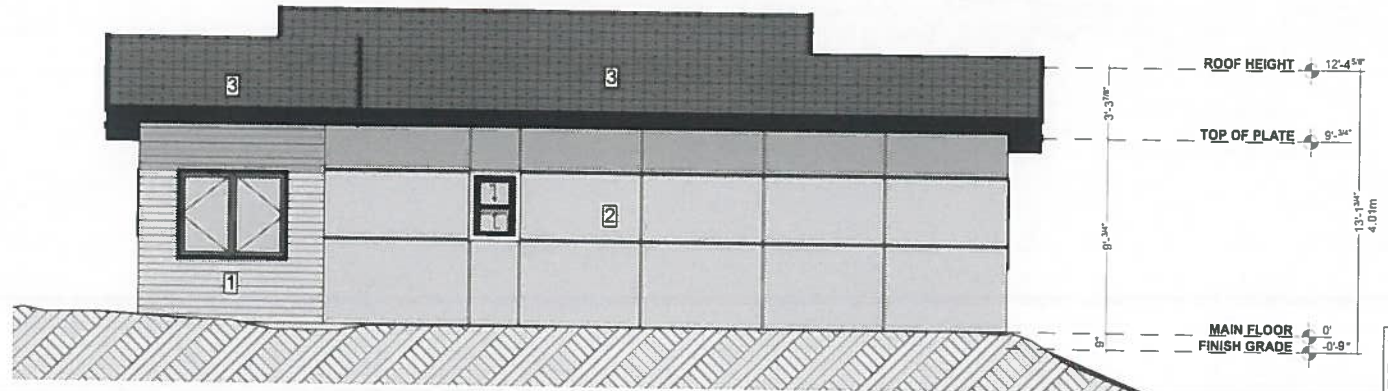
1 NORTH ELEVATION
SCALE: 1/4" = 1'-0"



2 EAST ELEVATION
SCALE: 1/4" = 1'-0"



3 SOUTH ELEVATION
SCALE: 1/4" = 1'-0"



4 WEST ELEVATION
SCALE: 1/4" = 1'-0"

EXTERIOR CLADDING LEGEND

- 1 CLEAR CEDAR SIDING STAINED
- 2 HARDE PANEL W/ EZ TRIM
- 3 ASPHALT ROOFING SHINGLES
- 4 FINISHED CONCRETE PARGED

ADDITIONAL EXTERIOR FINISHINGS

GUTTERS	2" CONTINUOUS ALUMINUM (PRE-FINISHED)
DOWN SPUTS	1 1/2" ALUMINUM (CONVEX) (PRE-FINISHED)
SOFFIT	VENTED ALUMINUM (PRE-FINISHED)
FASCIA	2 1/8" COMB FACED SPP (PAINTED)
BELLY BAND	2 1/8" COMB FACED SPP (PAINTED)
WINDOW TRIM	SHEET METAL REVEALS (PRE-FINISHED)
DOOR TRIM	SHEET METAL REVEALS (PRE-FINISHED)

NOTE: WINDOW OPERATION SHALL BE AS PER OWNER'S DIRECTION AND CONFORM TO BCBC REQUIREMENTS. CONTRACTOR TO VERIFY ALL H.O. PRIOR TO ORDERING WORKS.
FLASH OVER ALL MATERIAL TRANSITIONS, DOOR AND WINDOW HEADERS
ALL COLORS AS PER OWNER.



3501 CAMCREST GARDEN SUITE

Drawings and Specifications as Instruments of Service are and shall remain the property of Adapt Design. They are not to be used on extensions of the project, or other projects, except by agreement in writing and appropriate compensation to the Designer.

The General Contractor is responsible for confirming and correlating dimensions at the job site. The Designer will not be responsible for construction means, methods, techniques, sequences, or procedures, or for safety precautions and programs in connection with the project.

© Adapt Design

ISSUED FOR PERMIT

SPATIAL SEPARATION BCBC 9.10.15.4

LIMITING DISTANCE	2.04m
EXPOSING BUILDING FACE	39.25 sq m
ALLOWABLE OPENINGS	11.0%
PROPOSED OPENINGS	2.74 sq m
PERCENT OPENINGS	6.98%

