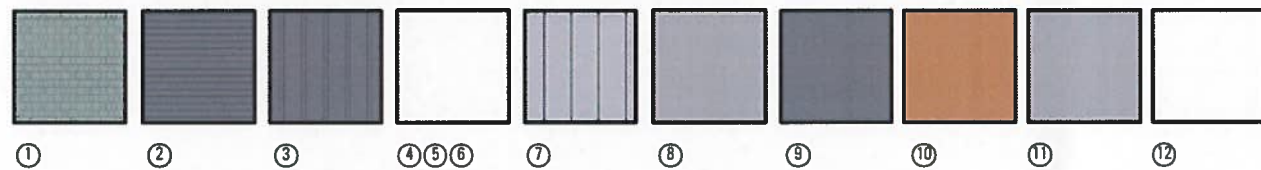




**Cook Street - Front Elevation**  
scale: 1 : 75m



**Typical Side Elevation**  
scale: 1 : 75m



Materials Key ①		
1 Siding	Cedar Shingles	Painted -
2 Siding	Horizontal fiber cement siding - 5" exposure	Painted -
3 Siding	Fiber Cement Board and cedar batton siding	Painted -
4 Fascias, Bargeboards, Trims	Comb Face Spruce	Painted -
5 Posts, handrails, guard rails	Comb face Spruce	Painted -
6 Building mounted trellis work	Comb Face Spruce	Painted -
7 Roofing	Sheet metal standing seam roofing	Galvalume
8 Roof Flashings	Sheet metal	Galvalume
9 Gutters, cross cavity flashings	Sheet metal	Weathered zinc
10 Exterior doors	Fiberglass	Painted -
11 Windows	Pre-finished Vinyl	grey
12 Aluminum deck / stair rails	Pre-finished Aluminum	White

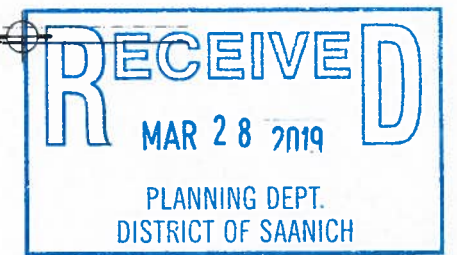


**Typical Side Elevation**  
scale: 1 : 75m

**Building 1**



**Cobb Lane - Rear Elevation**  
scale: 1 : 75m

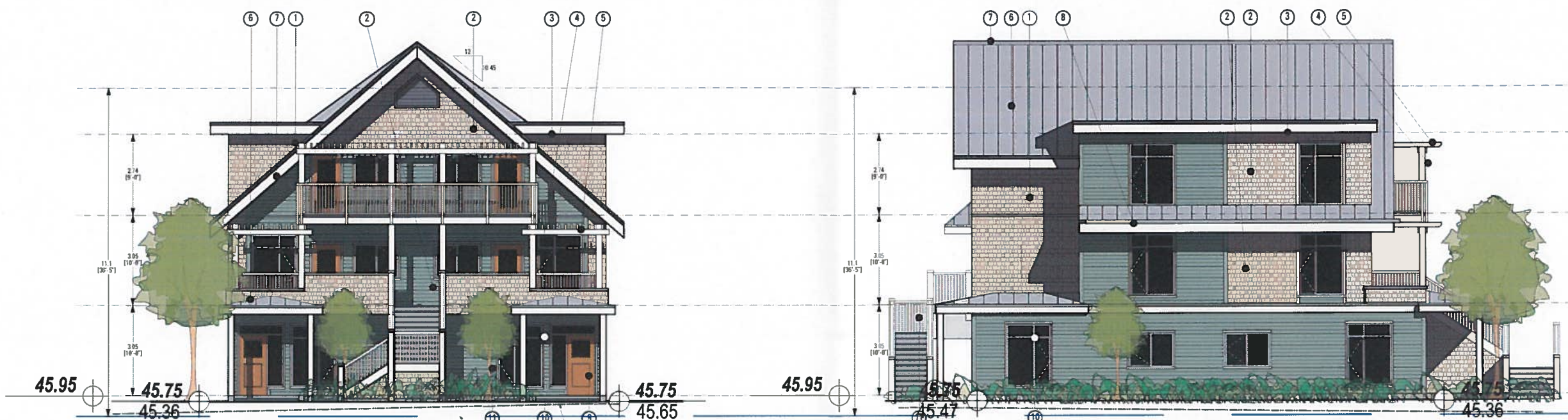


3461, 3451, 3449, 3447  
COOK STREET

**PROPOSED MULTI-FAMILY RESIDENTIAL DEVELOPMENT**

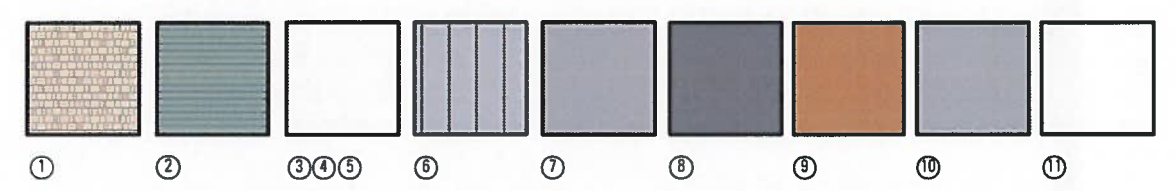
**A4**  
December 19th, 2017

**Joe Newell**  
ARCHITECT INC.  
#2 - 101 Presley Place, Victoria, BC V9B 0S4  
P. (250) 382-4240, F. (250) 382-5733  
www.joewellarchitect.com



**Cook Street - Front Elevation**  
scale: 1 : 75m

**Typical Side Elevation**  
scale: 1 : 75m



Materials Key		
1 Siding	Cedar Shingles	Painted -
2 Siding	Horizontal fiber cement siding - 5" exposure	Painted -
3 Fascias, Bargeboards, Trim	Comb Face Spruce	Painted -
4 Posts, handrails, guard rails	Comb Face Spruce	Painted -
5 Building mounted trellis work	Comb Face Spruce	Painted -
6 Roofing	Sheet metal standing seam roofing	Galvalume
7 Roof Flashings	Sheet metal	Galvalume
8 Gutters, cross cavity flashings	Sheet metal	Weathered zinc
9 Exterior doors	Fiberglass	Painted -
10 Windows	Pre-finished Vinyl	gray
11 Aluminum deck / stair rails	Pre-finished Aluminum	White

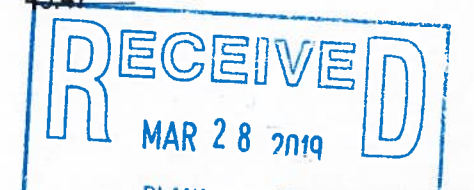


**Typical Side Elevation**  
scale: 1 : 75m

**Building 2**



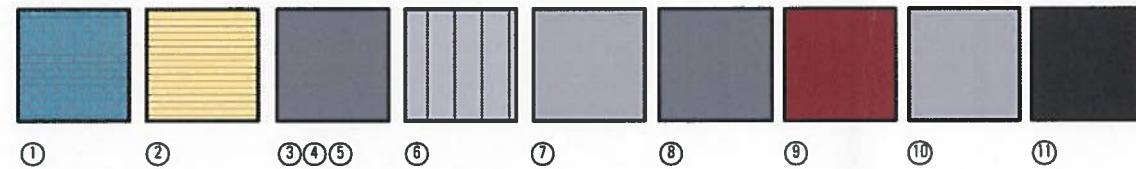
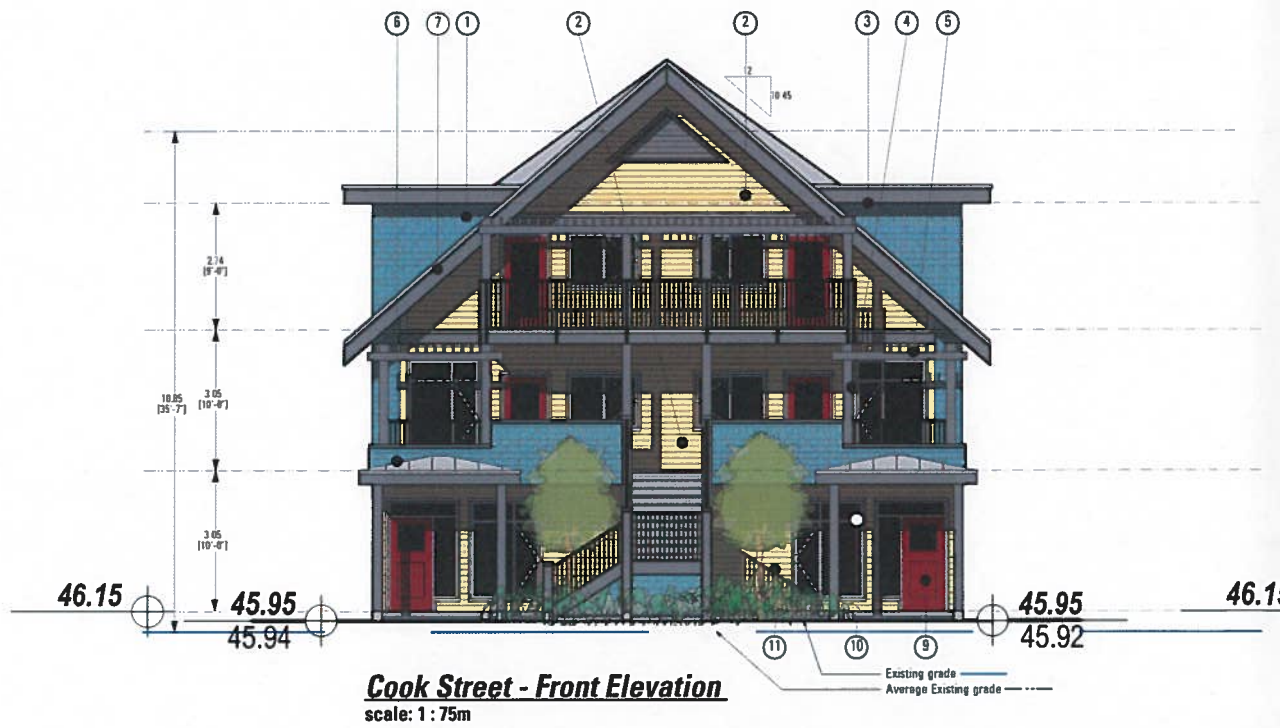
**Cobb Lane - Rear Elevation**  
scale: 1 : 75m



3461, 3451, 3449, 3447  
COOK STREET

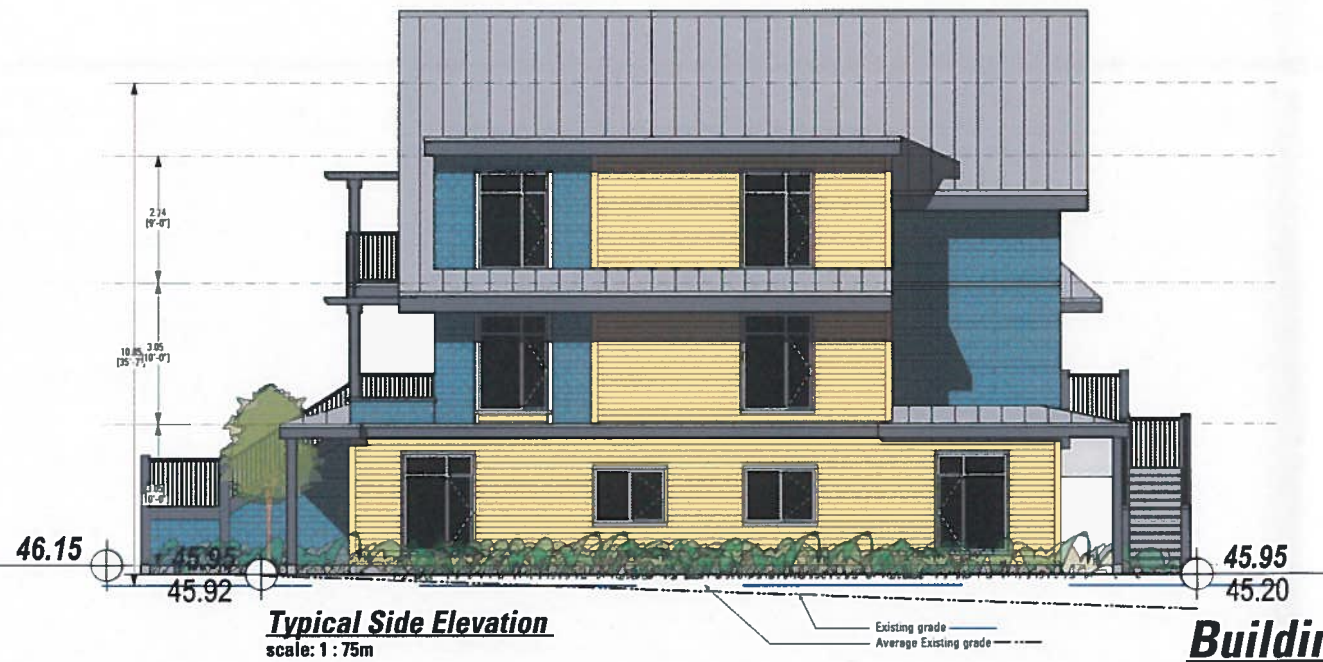
**PROPOSED MULTI-FAMILY RESIDENTIAL DEVELOPMENT**

**A5**  
December 19th, 2017  
Joe Newell  
Architect Inc.  
#2 - 101 Presley Place, Victoria, BC V8B 0S4  
P. (250) 382-4240, F. (250) 382-5733  
www.joewellarchitect.com

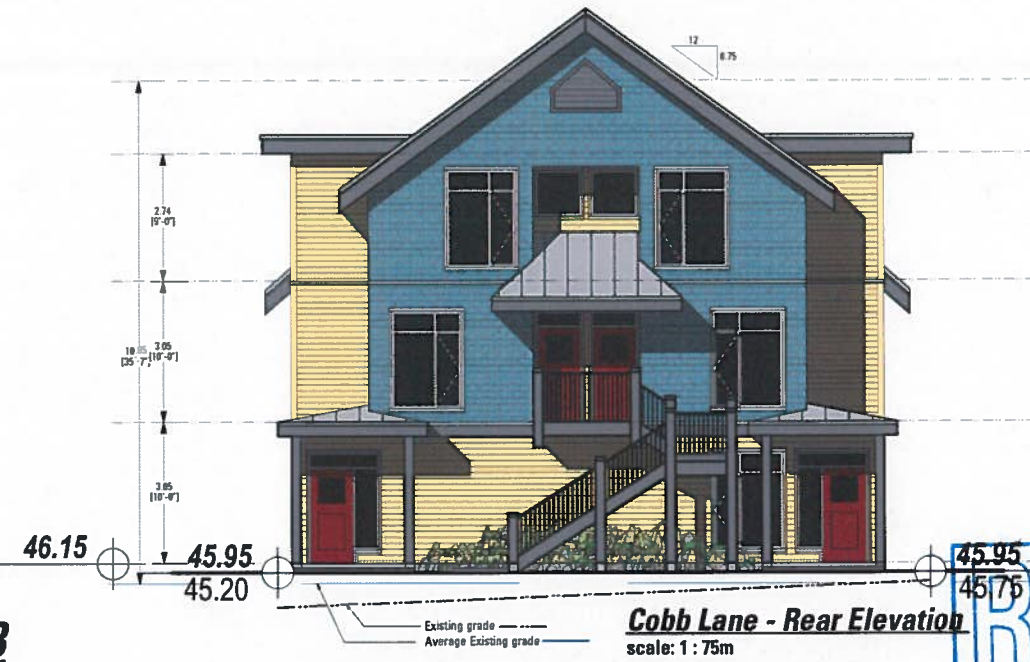


**Materials Key** ①

1 Siding	Cedar Shingles	Painted -
2 Siding	Horizontal fiber cement siding - 5" exposure	Painted -
3 Fences, Bargeboards, Trim	Comb Face Spruce	Painted -
4 Posts, Handrails, guard rails	Comb face Spruce	Painted -
5 Building mounted metal work	Comb Face Spruce	Painted -
6 Roofing	Sheet metal standing seam roofing	Galvalume
7 Roof Flashings	Sheet metal	Galvalume
8 Gutters - cross cavity flashings	Sheet metal	Weathered zinc
9 Exterior doors	Fiberglass	Painted -
10 Windows	Pre-finished Vinyl	grey
11 Aluminum deck / stair rails	Pre-finished Aluminum	White



**Building 3**



**RECEIVED**  
MAR 28 2019  
PLANNING DEPT.  
DISTRICT OF SAANICH

**A6**  
December 19th, 2017

**Joe Newell**  
Architect Inc.  
#2 - 101 Presley Place, Victoria, BC V9B 6S4  
P. (250) 382-4248, F. (250) 382-5733  
www.joewellarchitect.com

3461, 3451, 3449, 3447  
COOK STREET

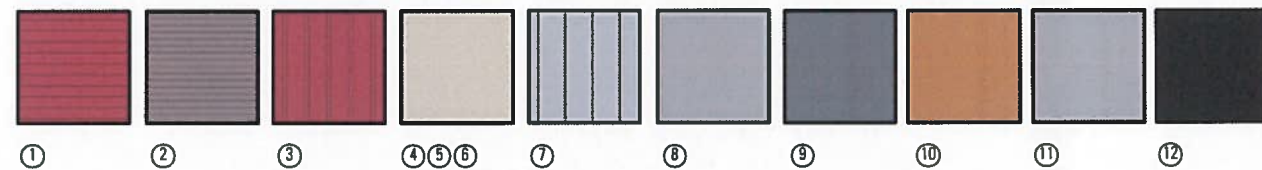
**PROPOSED MULTI-FAMILY RESIDENTIAL DEVELOPMENT**



**Cook Street - Front Elevation**  
scale: 1 : 75m



**Typical Side Elevation**  
scale: 1 : 75m



Materials Key ①		
1 Siding	Cedar Shingles	Painted -
2 Siding	Horizontal fiber cement siding - 5" exposure	Painted -
3 Siding	Fiber Cement Board and cedar batten siding	Painted -
4 Fascias, Bargeboards, Trim	Comb Face Spruce	Painted -
5 Posts, handrails, guard rails	Comb face Spruce	Painted -
6 Building mounted trellis work	Comb Face Spruce	Painted -
7 Roofing	Sheet metal standing seam roofing	Cashburne
8 Roof Flashings	Sheet metal	Cashburne
9 Gutters, cross cavity flashings	Sheet metal	Weathered zinc
10 Exterior doors	Fiberglass	Painted -
11 Windows	Pre-finished Vinyl	grey
12 Aluminum deck / stair rails	Pre-finished Aluminum	Black



**Typical Side Elevation**  
scale: 1 : 75m


**Building 4**



**Cobb Lane - Rear Elevation**  
scale: 1 : 75m

3461, 3451, 3449, 3447  
COOK STREET

**PROPOSED MULTI-FAMILY RESIDENTIAL DEVELOPMENT**

**RECEIVED**  
MAR 28 2019  
PLANNING DEPT.  
DISTRICT OF SAANICH  
**A7**  
December 19th, 2017  
Joe Newell  
architect inc.   
#2 - 101 Presley Place, Victoria, BC V9B 0S4  
P. (250) 382-4248, F. (250) 382-5733  
www.joewellarchitect.com