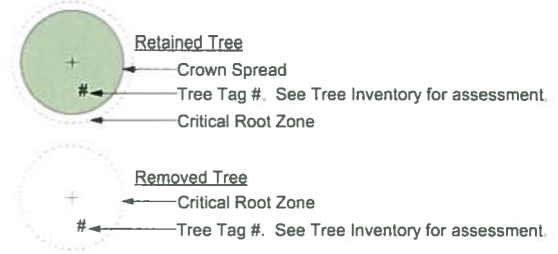


Existing Trees Legend:



Inventory of Existing Trees (Survey)

Tree ID	Diameter (m) and Species	Tree ID	Diameter (m) and Species
305	0.25 Pine	452	0.20 Deciduous
306	0.35 Maple	453	0.20 Deciduous
307	0.10 Pine	454	0.20 Deciduous
308	0.20 Deciduous	455	0.20 Deciduous
309	0.20 Maple	523	0.20 Deciduous
311	0.25 Maple	524	0.20 Deciduous
312	0.15 Maple	525	0.15 Deciduous
313	0.10 Pine	526	0.35 Deciduous
315	0.20 Maple	561	0.25 Maple
317	0.25 Deciduous	562	0.25 Maple
345	0.20 Maple	563	0.40 Maple
346	0.20 Maple	572	0.40 Maple
401	0.15 Maple	605	0.15 Maple
404	0.15 Maple	608	0.20 Maple
407	0.15 Maple	609	0.15 Maple
410	0.15 Maple	611	0.20 Maple
411	0.15 Maple	626	0.25 Maple
412	0.20 Maple	627	0.35 Maple
414	0.35 Maple	628	0.15 Deciduous
416	0.30 Pine	629	0.25 Maple
417	0.50 Pine	630	0.25 Maple
439	0.20 Deciduous	631	0.25 Maple
440	0.35 Maple	632	0.15 Deciduous
446	0.40 Pine	633	0.20 Deciduous
447	0.40 Pine	635	0.20 Deciduous
448	0.35 Maple	637	0.25 Maple
449	0.35 Maple	638	0.30 Pine

31 July 2019
 McIlvany Riley Land Surveying Inc.
 #113 - 2244 Sooke Road
 Victoria, B.C. V9B 1X1
 (250) 474-5538
 www.mrls.ca
 File: 6315SITE

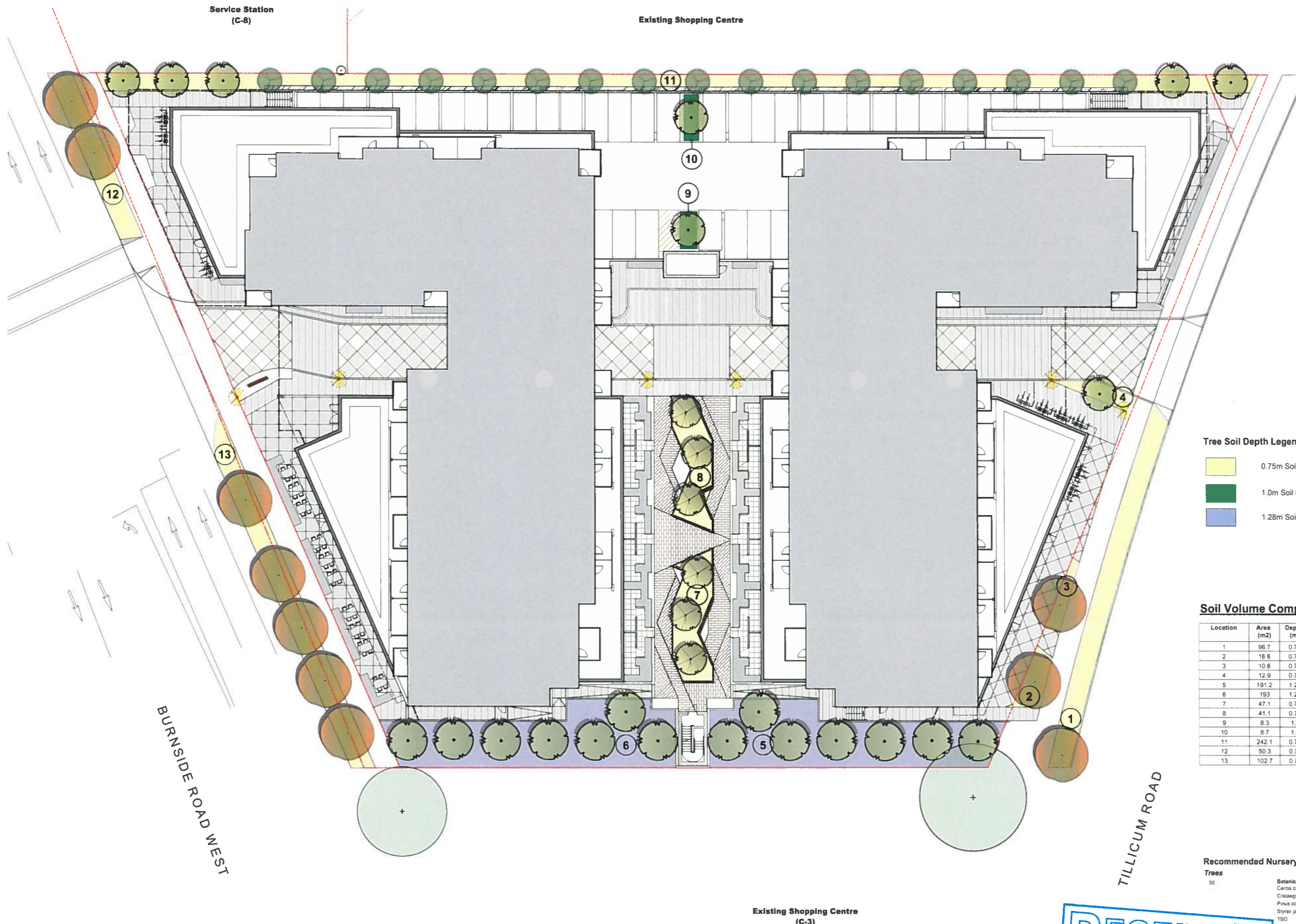
Inventory of Existing Trees (Arborist)

Tree ID	Common Name	Latin Name	DBH (cm)	Crown Spread (m)	CRZ (m)	Health	Structure	Relative Tolerance	Remarks and Recommendations	Retention Status
562	Red Oak	<i>Quercus rubra</i>	31	10	3.5	Good	Fair	Moderate	Municipal tree	X
563	Red Oak	<i>Quercus rubra</i>	47	10	5.5	Fair	Fair	Moderate	Municipal tree, codominant union at 2m, some defect	X
572	London Plane	<i>Platanus x acerifolia</i>	42	12	5.0	Fair	Good	Moderate	Neighbour's tree, 1.2m from retaining wall, approx. 4m from parking lot curb on subject property	Retain*
416	Austrian Pine	<i>Pinus nigra</i>	32	n	3.0	Fair	Fair	Good	Neighbour's tree, at southwest property corner, pruned from building and its drive lines	X
313	Spruce	<i>Spirea sp.</i>	11	1	1.5	Fair/poor	Fair	Poor	Neighbour's tree, 1m from property line, growing in raised bed in parking lot	X
417	Austrian Pine	<i>Pinus nigra</i>	47	10	4.5	Good	Fair	Good	Neighbour's tree, 4m from property line, raised heath, from drive lines	Retain

Prepared by:
 Talbot Mackenzie & Associates
 Phone: (250) 479-8733
 Fax: (250) 479-8733



L2 3400 Tillicum Road - Tree Preservation Plan



Tree Soil Depth Legend:

	0.75m Soil Depth
	1.0m Soil Depth
	1.28m Soil Depth

Tree Type	Minimum Soil Volume
Small Tree	8 Cubic Meters
Medium Tree	12 Cubic Meters
Large Tree	16 Cubic Meters

Soil Volume Compliance Table

Location	Area (m2)	Depth (m)	Number of Trees	Volume Req. (m3)	Total Volume Req. (m3)	Total Volume on Site (m3)	Compliance (Y / N)
1	96.7	0.75	1	8.0	8.0	72.5	Y
2	16.6	0.75	1	8.0	8.0	12.5	Y
3	10.6	0.75	1	8.0	8.0	8.0	Y
4	12.9	0.75	1	8.0	8.0	9.7	Y
5	191.2	1.28	7	8.0	56.0	244.7	Y
6	193	1.28	7	8.0	56.0	247.0	Y
7	47.1	0.75	3	8.0	24.0	35.3	Y
8	41.1	0.75	3	8.0	24.0	30.8	Y
9	8.3	1.0	1	8.0	8.0	8.3	Y
10	8.7	1.0	1	8.0	8.0	8.7	Y
11	242.1	0.75	22	8.0	176.0	181.6	Y
12	50.3	0.75	2	8.0	16.0	37.7	Y
13	102.7	0.75	5	8.0	40.0	77.0	Y

Recommended Nursery Stock

Trees	Botanical Name	Common Name	Size
55	Cercos canadensis	Eastern Redbud	5cm cal
	Crataegus douglasii	Black Hawthorn	4cm cal
	Pinus contorta	Shore Pine	2.5m ht
	Styrax japonicus	Japanese Snowbell	6cm cal
	TBD	Typical Street Tree	

Existing Shopping Centre (C-3)

L3

3400 Tillicum Road - Soil Volume Plan



LADR LANDSCAPE ARCHITECTS

Project No: 1944 May 15, 2020

#3-864 Queens Ave., Victoria B.C. V8T1M5
Phone: (250) 598-0105