

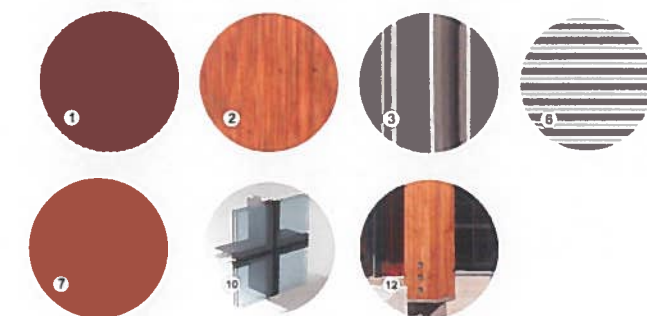
1 North Elevation  
Scale: 1:100

2 West (Front) Elevation  
Scale: 1:100

#### MATERIALS SCHEDULE

- 1 FIBRE-REINFORCED POLYMER COMPOSITE PANELS  
Steni-Vision - SV2007
- 2 FIBRE-REINFORCED POLYMER COMPOSITE PANELS  
Steni-Vision - SV1002
- 3 FIBRE-REINFORCED POLYMER COMPOSITE PANELS  
Steni-Vision - SV1005
- 4 FIBRE-REINFORCED POLYMER COMPOSITE PANELS  
Steni-Colour - SN0007
- 5 FIBRE-REINFORCED POLYMER COMPOSITE PANELS  
Steni-Colour - SN9202
- 6 CORRUGATED METAL - HORIZONTAL
- 7 CORTEN STEEL GUARD PANEL
- 8 LAMINATED/TEMPERED GLASS GUARD
- 9 VINYL WINDOWS AND DOORS  
Dary Grey
- 10 BUTT JOINT STOREFRONT GLAZING
- 11 GLAZED ALUMINUM FRAME OVERHEAD DOORS
- 12 HEAVY TIMBER ELEMENT
- 13 ENTRANCE CANOPY SOFFIT  
Stained V-Jointed Fir w/Soffit Lighting
- 14 CORTEN STEEL CANOPY
- 15 DECORATIVE METAL SCREEN

#### MATERIALS



1060 Meares Street  
Victoria, BC, V8V 3J6  
p 250.382.3823 e nsqa@nsqa.ca

L2 LIVING  
Mass Timber/CLT Midrise  
3143 Tillicum Road, Saanich, BC



Seal

Use of these drawings is limited to that identified in the issue/revision information. Do not construct from these drawings unless marked "Issued for Construction". All drawings, plans, models, designs, specifications and other documents prepared by nsqArchitecture Ltd. (nsqA) and used in connection with this project remain the property of nsqA whether the work is executed or not. nsqA reserves the copyright in them and in the work executed from them. These drawings or other may not be reproduced or used in part or in whole, without the expressed and written consent of nsqA.

#### ISSUE DATA

No.	DESCRIPTION	DATE	BY
1	Issued for Rezoning & Development Permit	22-05-05	NS

Elevations  
North & West

A-3.0

PLOT DATE May 5, 2022	DRAWN LC/NS
SCALE AS NOTED	JOB No. 2043



1060 Meares Street  
Victoria, BC, V8V 3J6  
p. 250.382.3823 e. nsqa@nsqa.ca

L2 LIVING  
Mass Timber/CLT Midrise  
3143 Tillicum Road, Saanich, BC



Seal

Use of these drawings is limited to that identified in the issue/revision information. Do not construct from these drawings unless marked "Issued for Construction".  
All drawings, plans, models, designs, specifications and other documents prepared by nsqArchitecture Ltd. (nsqA) and used in connection with this project remain the property of nsqA whether the work is executed or not. nsqA reserves the copyright in them and in the work executed from them. These drawings or other may not be reproduced or used in part or in whole, without the expressed and written consent of nsqA.

ISSUE DATA

No.	DESCRIPTION	DATE	BY
1	Issued for Rezoning & Development Permit	22-05-05	NS

Elevations  
South & East

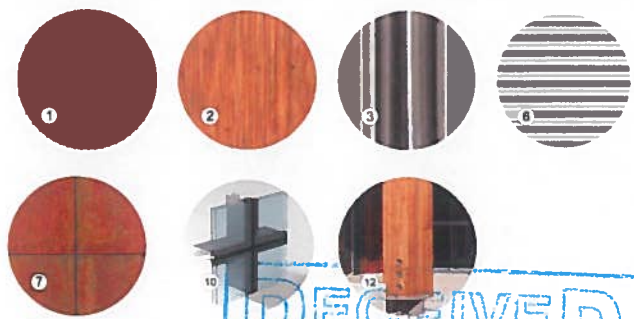
A-3.1

PLOT DATE May 5, 2022	DRAWN LC/NS
SCALE AS NOTED	JOB No. 2043



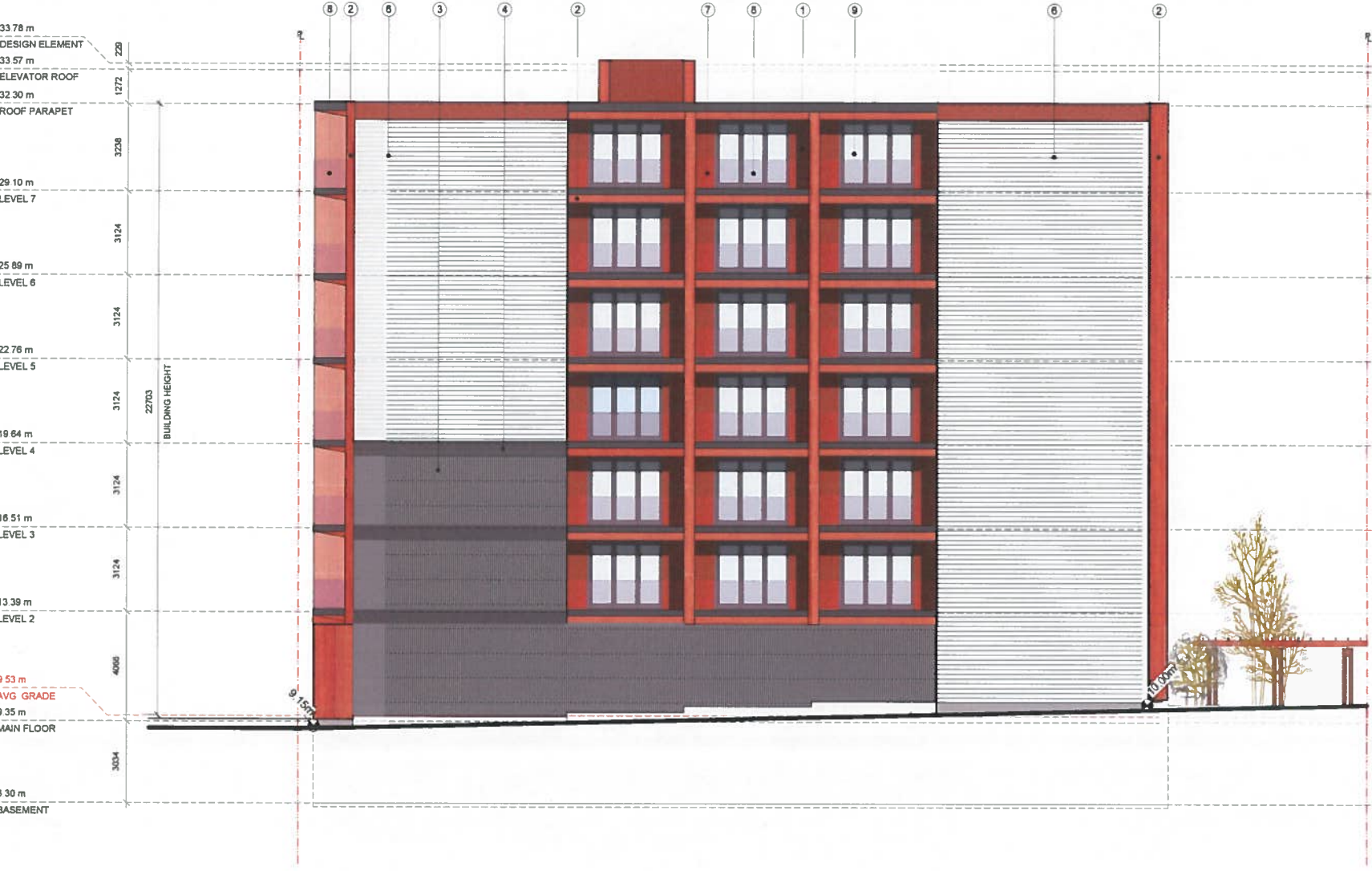
2 East (Rear) Elevation  
Scale: 1:100

MATERIALS



MATERIALS SCHEDULE

- 1 FIBRE-REINFORCED POLYMER COMPOSITE PANELS  
Steni-Vision - SV2007
- 2 FIBRE-REINFORCED POLYMER COMPOSITE PANELS  
Steni-Vision - SV1002
- 3 FIBRE-REINFORCED POLYMER COMPOSITE PANELS  
Steni-Vision - SV1005
- 4 FIBRE-REINFORCED POLYMER COMPOSITE PANELS  
Steni-Colour - SN0007
- 5 FIBRE-REINFORCED POLYMER COMPOSITE PANELS  
Steni-Colour - SN9202
- 6 CORRUGATED METAL - HORIZONTAL
- 7 CORTEN STEEL GUARD PANEL
- 8 LAMINATED/TEMPERED GLASS GUARD
- 9 VINYL WINDOWS AND DOORS  
Dary Grey
- 10 BUTT JOINT STOREFRONT GLAZING
- 11 GLAZED ALUMINUM FRAME OVERHEAD DOORS
- 12 HEAVY TIMBER ELEMENT
- 13 ENTRANCE CANOPY SOFFIT  
Stained V-Jointed Fir w/Soffit Lighting
- 14 CORTEN STEEL CANOPY
- 15 DECORATIVE METAL SCREEN



1 South Elevation  
Scale: 1:100

33.78 m  
DESIGN ELEMENT  
33.57 m  
ELEVATOR ROOF  
32.30 m  
ROOF PARAPET  
29.10 m  
LEVEL 7  
25.89 m  
LEVEL 6  
22.76 m  
LEVEL 5  
19.64 m  
LEVEL 4  
16.51 m  
LEVEL 3  
13.39 m  
LEVEL 2  
9.53 m  
AVG GRADE  
9.35 m  
MAIN FLOOR  
6.30 m  
BASEMENT

BUILDING HEIGHT  
22.763

