

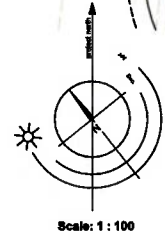
Soil Depth Legend:

- 0.225m Soil Depth over Subgrade (Grass Lawn)
- 0.45m Soil Depth (Planter Boxes)
- 0.6m Soil Depth over Subgrade
- 0.7m Soil Depth (Trees)
- 1.0m Soil Depth (Trees)

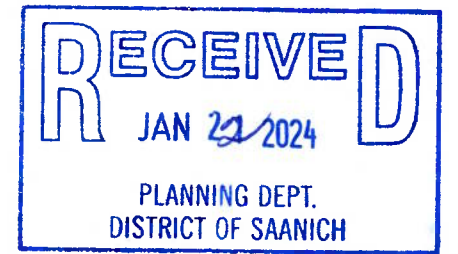
Tree Type	Minimum Soil Volume
Small Tree	8 Cubic Meters
Medium Tree	12 Cubic Meters
Large Tree	16 Cubic Meters

Soil Volume Compliance Table

Location	Area (m ²)	Depth (m)	Number of Trees	Volume Req. (m ³)	Total Volume Req. (m ³)	Total Volume on Site (m ³)	Compliance (Y/N)
1	75.2	0.6	3	8.0	24.0	51.7	Y
	34.3	0.225					
2	3.5	0.7	1	8.0	8.0	10.2	Y
	42	0.6					
3	6.3	0.7	2	8.0	16.0	32.2	Y
	180	0.6					
5	180	0.6	2	8.0	18.0	108.0	Y
6	42.8	1	2	8.0	16.0	42.8	Y
7	15	1	1	12.0	12.0	10.5	Y
8	60.9	0.6	4	8.0	32.0	36.5	Y
9	63.6	0.6	3	8.0	24.0	38.2	Y
10	29	0.6	1	8.0	8.0	17.4	Y



2921 Earl Grey Street | Soil Volume Plan



Jan 19/24
 Jan 16/24
 Dec 22/22
 May 16/22
 May 12/22

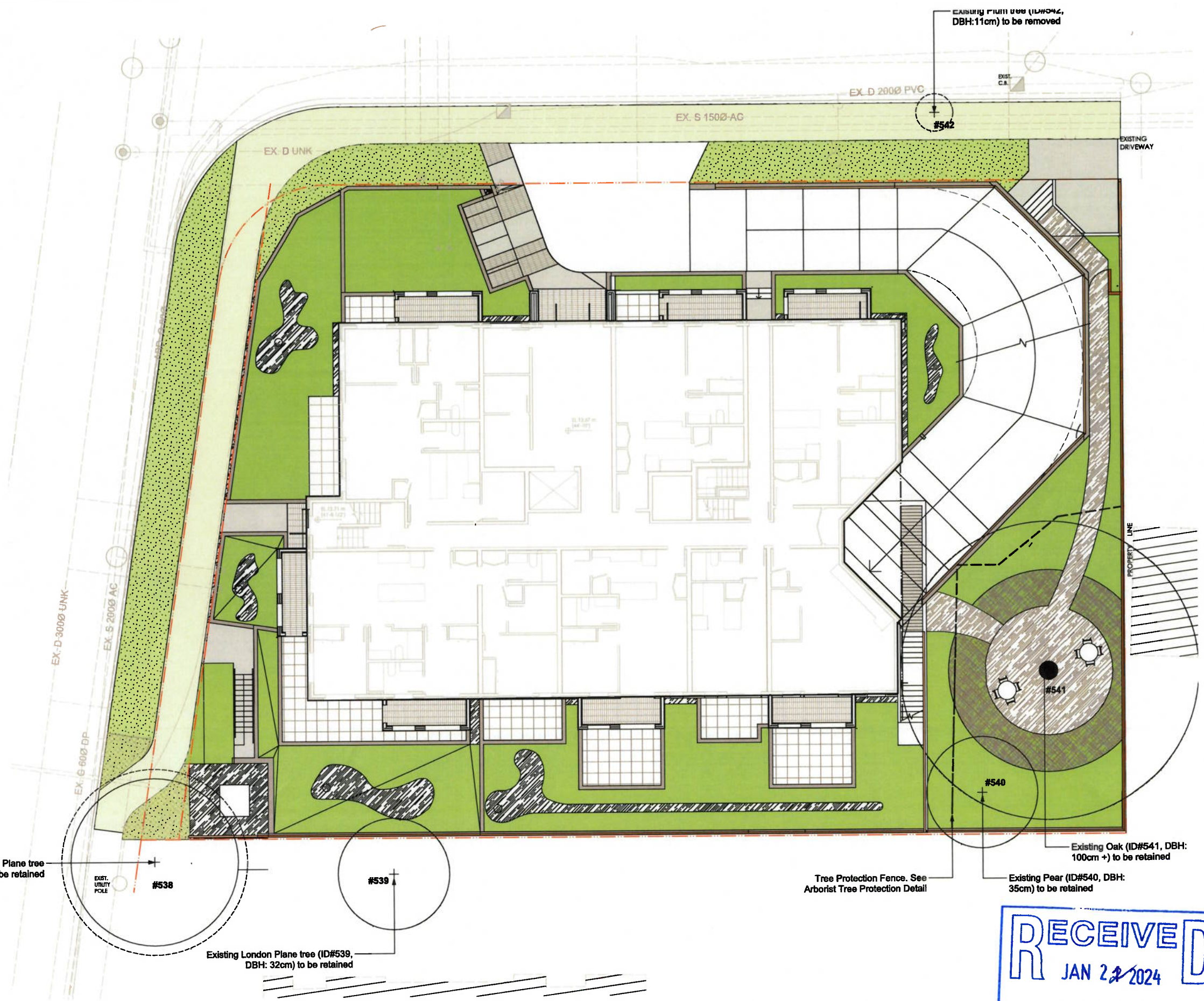
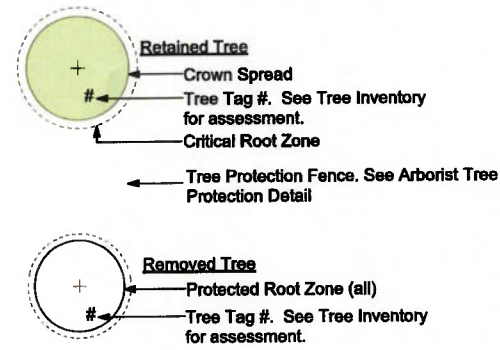
Table 1 - Tree Inventory

Tag #	Spec.	DBH (cm)	HT (m)	PRZ (m)	CRZ (m)	Cond P/F/G	Impact L/M/H	Bylaw Prot.	Retain	Remove	Comments
#542	Maple	10	3	2	1	F/F	L	No	X		Off site tree - Non protected.
#538	L. plane	50	20	9	3	F/F	L	Yes	X		Retain - S/E corner - BC Hydro possible impacts - private tree - DP tree to be pruned as per P/O agreement
#539	L. plane	34	14	6	3	F/F	L	Yes	X		Retain - East side - private tree - DP tree to be pruned as per P/O agreement
#540	Pear	35	4	6	3	F/F	M/H	No	X		Older pear tree - to be retained.
#541	Oak	100+	18	18	9	F/F	L	Yes	X		Protect & retain - Landscape improvements to benefit PRZ
#542	Plum	11	3	2	1	F/F	H	Yes	X		Direct impact - Remove to grade

Information Sheet

DBH - Diameter Breast Height - Calculated at 1.41 m above grade on tree stem
 PRZ - Protected Root Zone, (calculated at a ratio of 1:1.8) 50cm DBH = 9m PRZ
 CRZ - Critical Root Zone, (calculated at a ratio of 1:9) 60cm DBH = 5m CRZ
 50cm DBH = 5m CRZ
 Condition - P= Poor, F=Fair, G=Good

Existing Tree Legend:



Existing London Plane tree (ID#538, DBH: 50) to be retained

#538

#539

Existing London Plane tree (ID#539, DBH: 32cm) to be retained

Tree Protection Fence. See Arborist Tree Protection Detail

Existing Pear (ID#540, DBH: 35cm) to be retained

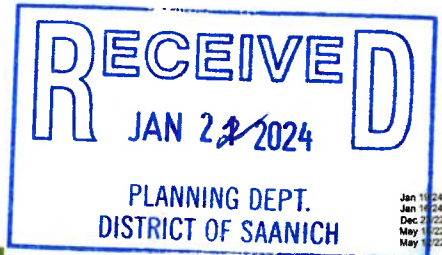
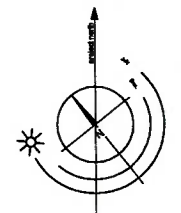
Existing Oak (ID#541, DBH: 100cm+) to be retained

#540

#541

#542

EXISTING PLUM TREE (ID#542, DBH:11cm) to be removed



2921 Earl Grey Street | Tree Preservation Plan