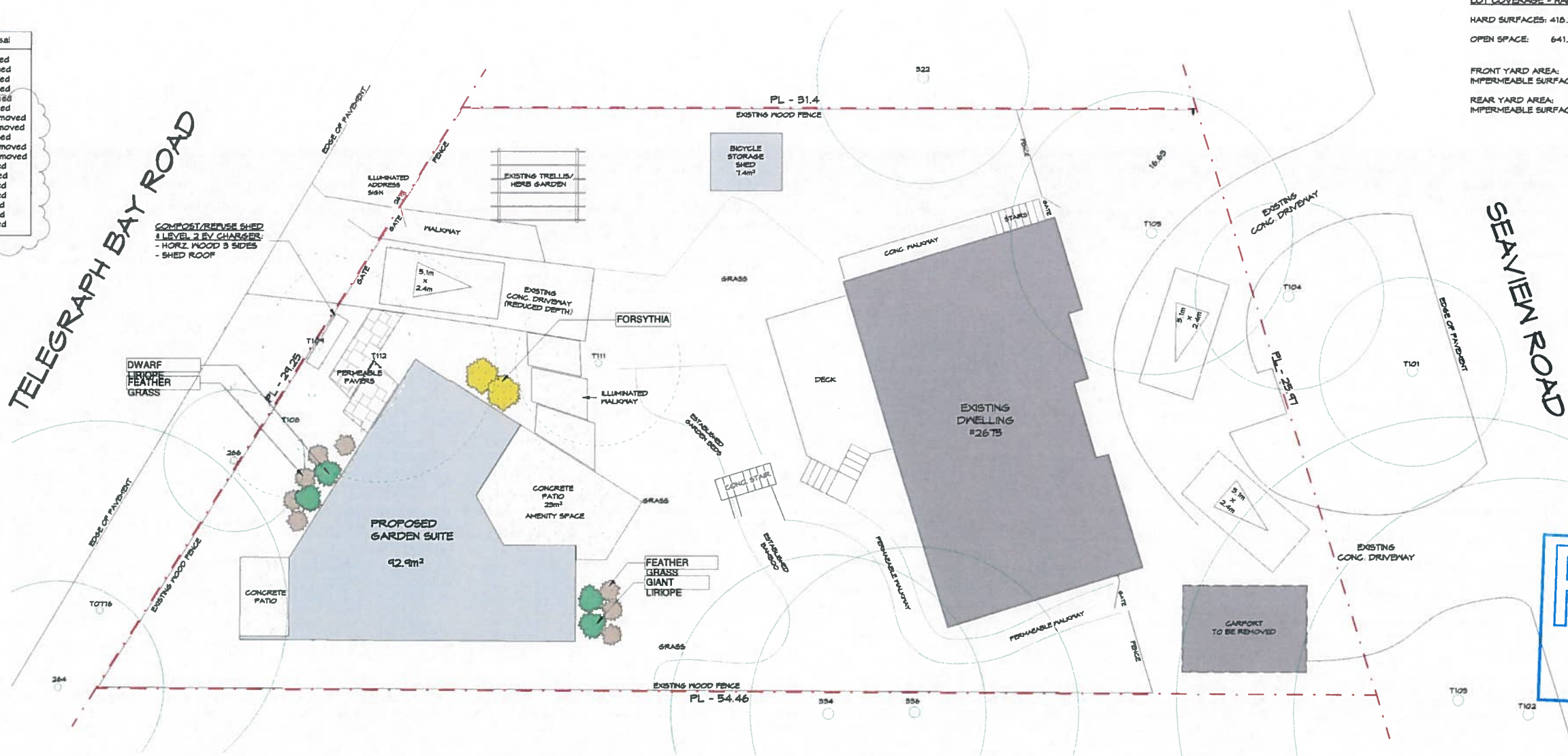


**TREE INVENTORY**

Tag No.	Species	Size(DBH)	Canopy	Bylaw Status	Proposal
T101	Port. Laurel	20 cm	8.0 m	Protected	Retained
T102	Arbutus	40 cm	20.0 m	Protected	Retained
T103	Maple	45 cm	24.0 m	Protected	Retained
T104	Port-Laurel	25 cm	8.0 m	Protected	Retained
T105	Port. Laurel	60 cm	12.0 m	Protected	Retained
T106	Port. Laurel	40 cm	6.0 m	Not Protected	Retained
T107	Holly	42 cm	6.0 m	Not Protected	To be Removed
T108	Apple	30 cm	8.0 m	Not Protected	To be Removed
T109	Pissardii Plum	15 cm	5.0 m	Not Protected	Retained
T110	Pissardii Plum	30 cm	7.0 m	Not Protected	To be Removed
T111	Laurel	50 cm	6.0 m	Not Protected	To be Removed
T0716	Horse Chestnut	70 cm	16.0 m	Protected	Retained
264	Horse Chestnut	25 cm	4.0 m	Protected	Retained
266	Apple	25 cm	6.0 m	Protected	Retained
322	Cypress	55 cm	4.0 m	Not Protected	Retained
334	Doug. Fir	120 cm	4.0 m	Protected	Retained
356	Doug. Fir	80 cm	14.0 m	Protected	Retained
405	Port. Laurel	20 cm	6.0 m	Not Protected	Retained



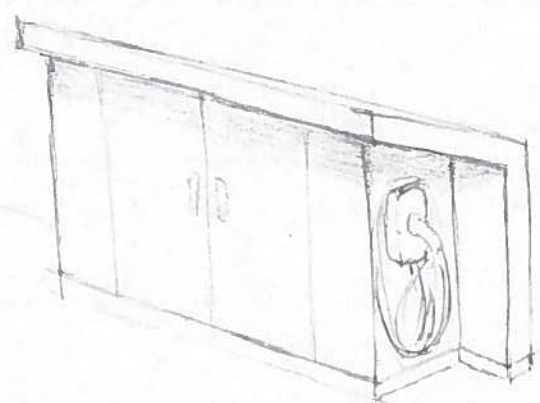
**LOT COVERAGE - HARD SURFACES/OPEN SPACE**  
 HARD SURFACES: 418.2m² = 34.5%  
 OPEN SPACE: 641.8m² = 60.5%  
 FRONT YARD AREA: 204.1m²  
 IMPERMEABLE SURFACES: 103.7m² = 50.8%  
 REAR YARD AREA: 630.8m²  
 IMPERMEABLE SURFACES: 171.8m² = 27.2%

1 Landscape Plan  
1:100

**RECEIVED**  
 OCT 22 2021  
 PLANNING DEPT.  
 DISTRICT OF SAANICH

**EDDA**  
 CREATIVE  
 417A HILLSIDE AVE  
 VICTORIA, BC  
 CANADA V8T 1Y6

RECYCLING/REFUSE SHED WITH COVERED BY CHARGER



VIEW OF PRIMARY RESIDENCE FROM GARDEN SUITE SITE, LOOKING EAST



VIEW OF EXISTING FENCE ON SOUTH PROPERTY LINE, AT GARDEN SUITE SITE. FENCE PANELS ARE 1.2m HIGH, WITH AN ADDITIONAL 0.6m METAL MESH, TOTAL HEIGHT: 1.8m (6'-0")



ADDRESS  
 2675 Seaview Rd.  
 Saanich, BC

CLIENT  
 Kevin Tolmer & Mayra Costa  
 ISSUED FOR  
 GARDEN SUITE  
 Development  
 Variance Permit

AMMENDMENT  
 S

DATE  
 Oct. 15, 2021

Landscape Plan

DRAWN BY  
 AJW  
 CHECKED BY  
 JS