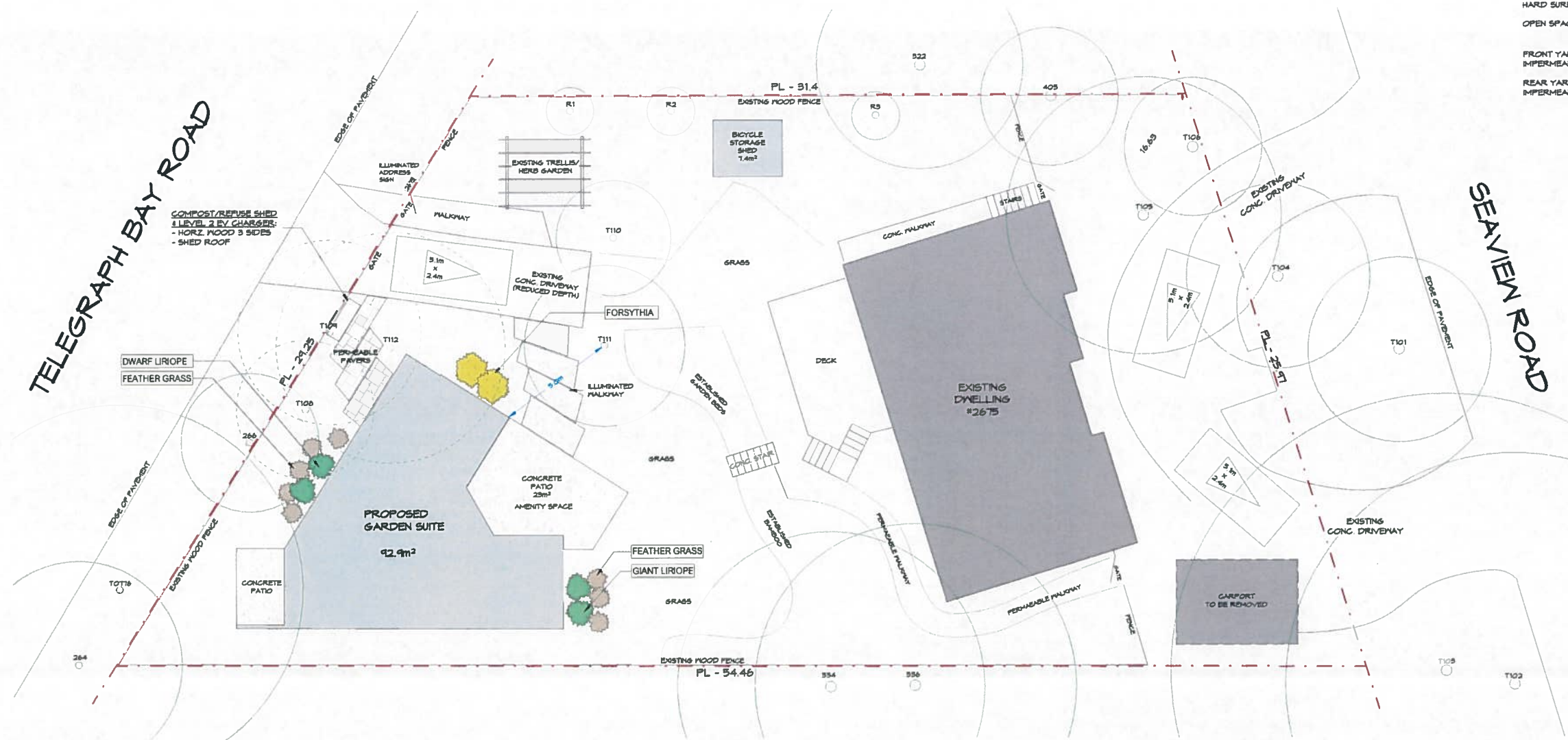
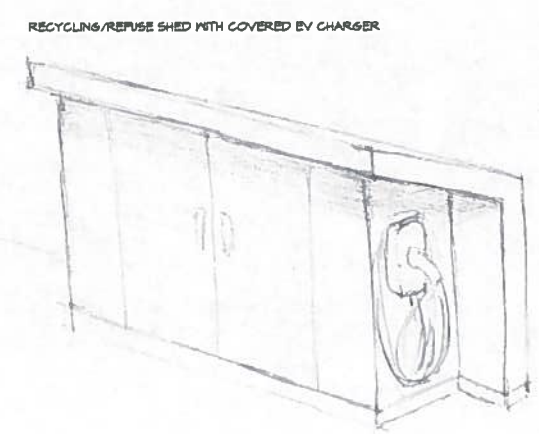


LOT COVERAGE - HARD SURFACES/OPEN SPACE  
 HARD SURFACES: 410.2m<sup>2</sup> = 34.5%  
 OPEN SPACE: 641.8m<sup>2</sup> = 60.5%  
 FRONT YARD AREA: 204.1m<sup>2</sup>  
 IMPERMEABLE SURFACES: 109.7m<sup>2</sup> = 50.8%  
 REAR YARD AREA: 630.8m<sup>2</sup>  
 IMPERMEABLE SURFACES: 171.8m<sup>2</sup> = 27.2%



**RECEIVED**  
 JUL 16 2021  
 PLANNING DEPT.  
 DISTRICT OF SAANICH

1 Landscape Plan  
 1 : 100



**TREE INVENTORY**

Tag No.	Species	Size(DBH)	Canopy	Bylaw Status	Proposal
T101	Port. Laurel	20 cm	8.0 m	Protected	Retained
T102	Arbutus	40 cm	20.0 m	Protected	Retained
T103	Maple	45 cm	24.0 m	Protected	Retained
T104	Port. Laurel	25 cm	8.0 m	Protected	Retained
T105	Port. Laurel	60 cm	12.0 m	Protected	Retained
T106	Port. Laurel	60 cm	6.0 m	Protected	Retained
T108	Holly	80 cm	6.0 m	Not Protected	To be Removed
T109	Apple	90 cm	8.0 m	Protected	To be Removed
T110	Pissardii Plum	15 cm	5.0 m	Not Protected	Retained
T111	Pissardii Plum	20 cm	7.0 m	Not Protected	Retained
T112	Laurel	60 cm	8.0 m	Not Protected	To be Removed
TOTT6	Horse Chestnut	70 cm	16.0 m	Protected	Retained
264	Horse Chestnut	25 cm	4.0 m	Protected	Retained
266	Apple	25 cm	6.0 m	Protected	Retained
322	Cedar	80 cm	4.0 m	Protected	Retained
334	Doug. Fir	120 cm	4.0 m	Protected	Retained
336	Doug. Fir	80 cm	14.0 m	Protected	Retained
405	Port. Laurel	20 cm	6.0 m	Not Protected	Retained
R1	Bird Cherry				Replacement
R2	Pac. Fic. Willow				Replacement
R3	Quaking Aspen				Replacement



**EDDA CREATIVE**  
 417A HILLSIDE AVE  
 VICTORIA, BC  
 CANADA V8T 1Y6

ADDRESS  
 2675 Seaview Rd.  
 Saanich, BC

CLIENT: Kevin Palmer & Myrcia Costa  
 ISSUED FOR:  
**GARDEN SUITE  
 Development  
 Variance Permit**

AMMENDMENTS

DATE July 14, 2021

Landscape Plan

DRAWN BY AJW  
 CHECKED BY JS

**A7**  
 SCALE: As Indicated @ 24 X 36"

2021-07-14 1:13:29 PM