



14 Elevation - South Facade
1/100

MATERIAL FINISHES - A (APARTMENT BUILDING)

1.1 - STUCCO IMASCO MINERALS INC. WICCAN EARTH #139-IP	5.1 - ALUMINUM GLASS GUARD 5.2 - GLASSMETAL GUARD (JULIET BALCONY)
2.1 - PREFORMED METAL PANEL, COLOUR 1 PARKER JOHNSTON KYNAR - CHAMPAGNE METALLIC	6.1 - FIXED SUN SHADE
2.2 - PREFORMED METAL PANEL, COLOUR 2 VICWEST - FUSAIN QC 16072	7.1 - ASPHALT SHINGLES MALARKEY - 3-TAB SHINGLES - STORM GREY
2.3 - PREFORMED METAL PANEL, COLOUR 3 VICWEST - CAMBRIDGE WHITE QC 16161	
3.1 - TRIPLE GLAZE WINDOWS	
4.1 - WOODSIDING SIKKENS - #078 NATURAL ON CEDAR	



15 Elevation - North Facade
1/100

HCMA

TOWNLEY PLACE
1780 Townley Street, Saanich, BC

DATE
17 MAY 2017
29 MAY 2017
31 JUL 2017

ISSUE DESCRIPTION
1 ISSUED FOR BC HOUSING REVIEW
2 ISSUED FOR REZONING RESUBMISSION
3 ISSUED FOR REZONING RESUBMISSION



RECEIVED
AUG 01 2017
PLANNING DEPT
DISTRICT OF SAANICH

ELEVATIONS - APARTMENT BUILDING

DATE: 2017/5/10
A5.1
SCALE: 1 : 100

16 Elevation - East Facade
1:100



17 Elevation - West Facade
1:100



MATERIAL FINISHES - A (APARTMENT BUILDING)

1.1 - STUCCO IMASCO MINERALS INC. WICCAN EARTH #139-IP	5.1 - ALUMINUM GLASS GUARD 5.2 - GLASS/METAL GUARD (JULIET BALCONY)
2.1 - PREFORMED METAL PANEL, COLOUR 1 PARKER JOHNSTON KYNAR - CHAMPAGNE METALLIC	6.1 - FIXED SUN SHADE
2.2 - PREFORMED METAL PANEL, COLOUR 2 VICWEST - FUSAIN OC 16072	7.1 - ASPHALT SHINGLES MALARKEY - 3-TAB SHINGLES - STORM GREY
2.3 - PREFORMED METAL PANEL, COLOUR 3 VICWEST - CAMBRIDGE WHITE OC 16161	
3.1 - TRIPLE GLAZE WINDOWS	
4.1 - WOODSIDING SIKKENS - #078 NATURAL ON CEDAR	

TOWNLEY PLACE
1780 Townley Street, Saanich, BC

DATE
17 MAY 2017
29 MAY 2017
31 JUL 2017

ISSUE DESCRIPTION
1 ISSUED FOR BC HOUSING REVIEW
2 ISSUED FOR REZONING RESUBMISSION
3 ISSUED FOR REZONING RESUBMISSION

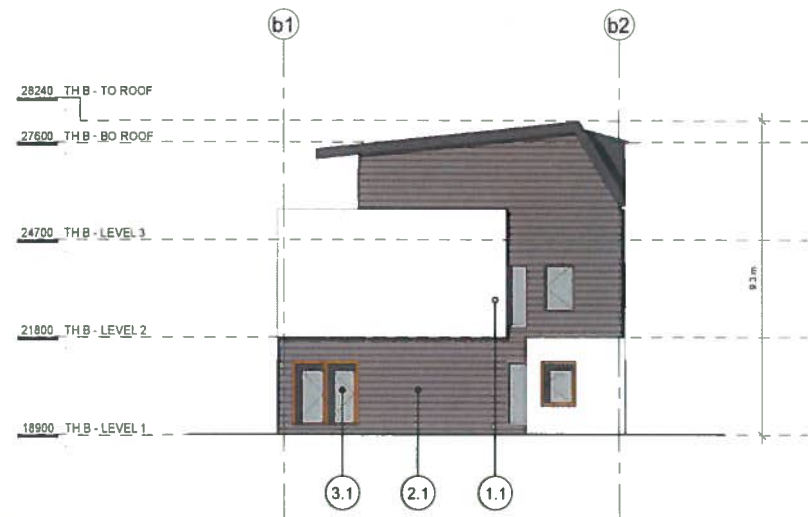


ELEVATIONS - APARTMENT BUILDING

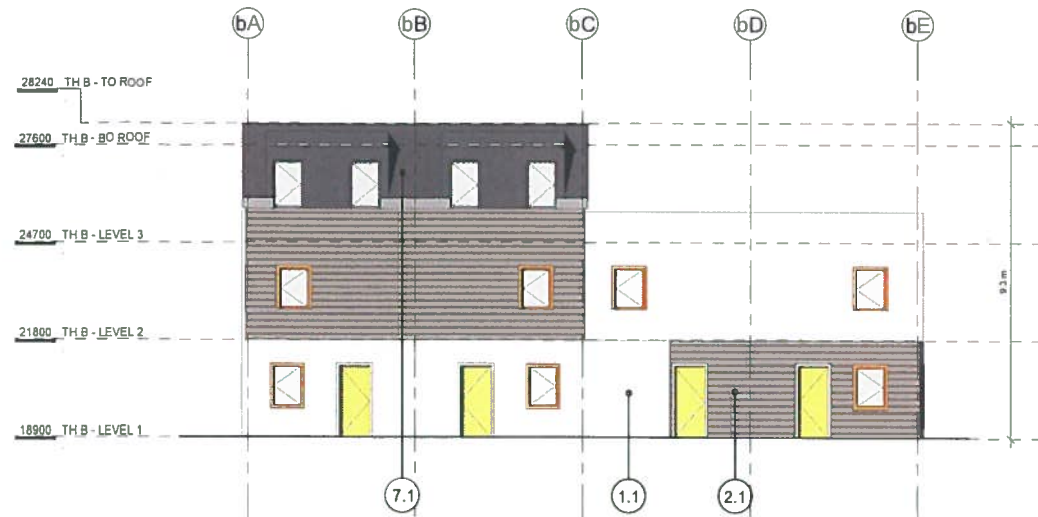
RECEIVED
AUG 01 2017
PLANNING DEPT.
DISTRICT OF SAANICH

HCMA Architecture + Design
Suite 300, 569 Johnson Street
Victoria BC V8W 1M2 Canada
250 382 6650
W hcma.ca

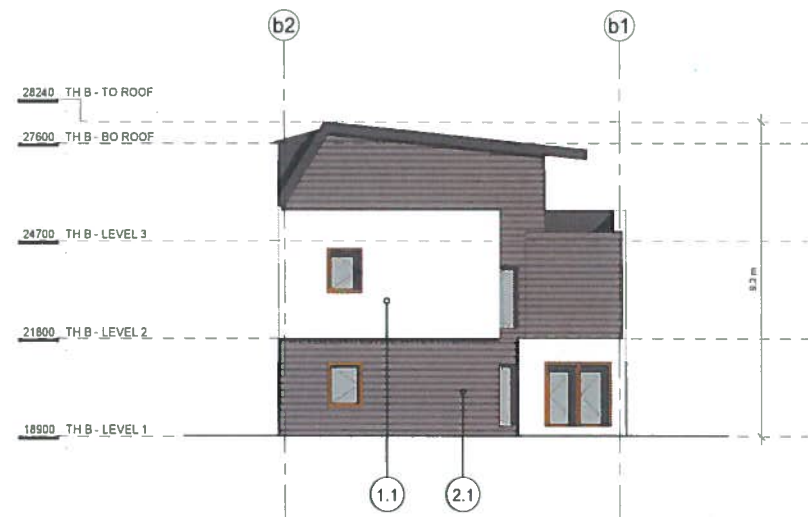
DATE: 2017/5/10
A5.2
SCALE: 1:100



18 TH B - EAST ELEVATION
1:100



19 TH B - NORTH ELEVATION
1:100



20 TH B - WEST ELEVATION
1:100



21 TH B - SOUTH ELEVATION
1:100

MATERIAL FINISHES - A (APARTMENT BUILDING)

1 1 - STUCCO IMASCO MINERALS INC / MCCAN EARTH #139-IP	5 1 - ALUMINUM GLASS GUARD 5 2 - GLASS/METAL GUARD (JULIET BALCONY)
2 1 - PREFORMED METAL PANEL, COLOUR 1 PARKER JOHNSTON KYNAR - CHAMPAGNE METALLIC	6 1 - FIXED SUN SHADE
2 2 - PREFORMED METAL PANEL, COLOUR 2 VICWEST - FUSAIN QC 16072	7 1 - ASPHALT SHINGLES MALARKY - 3-TAB SHINGLES - STORM GUARD
2 3 - PREFORMED METAL PANEL, COLOUR 3 VICWEST - CAMBRIDGE WHITE QC 16161	
3 1 - TRIPLE GLAZE WINDOWS	
4 1 - WOODSIDING SIKKENS - #078 NATURAL ON CEDAR	

RECEIVED
AUG 01 2017
PLANNING DEPT.
DISTRICT OF SAANICH

HCMA

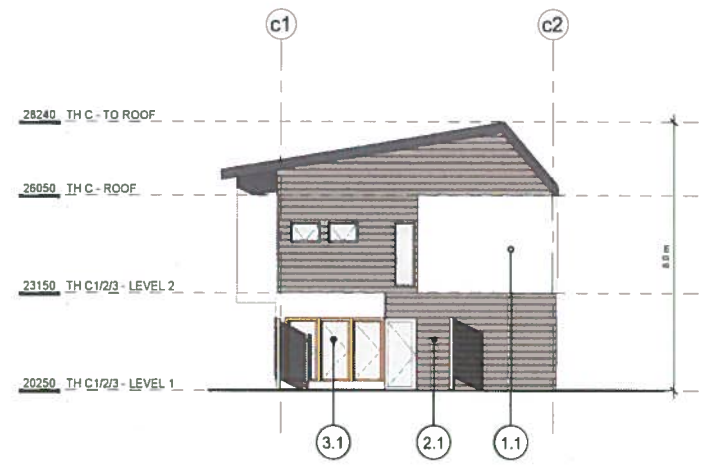
TOWNLEY LODGE
1780 Townley Street, Saanich, BC
DATE: 17 MAY 2017
29 MAY 2017
ISSUE DESCRIPTION
1 ISSUED FOR BC HOUSING REVIEW
2 ISSUED FOR REZONING RESUBMISSION



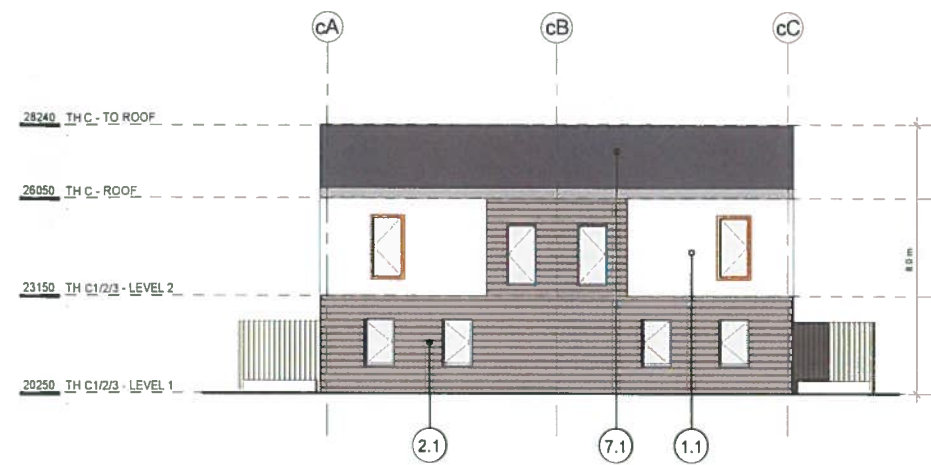
TH B ELEVATIONS

DATE: dd/mm/yyyy
A5.3
SCALE: 1:100

HCMA Architecture + Design
400 - 625 West Hastings Street
Vancouver BC V6B 1N2 Canada
T 604.732.6620
W hcma.ca



22 TH C - EAST ELEVATION
1:100



23 TH C - NORTH ELEVATION
1:100



24 TH C - WEST ELEVATION
1:100



25 TH C - SOUTH ELEVATION
1:100

MATERIAL FINISHES - A (APARTMENT BUILDING)

1 1 - STUCCO IMASCO MINERALS INC WICCAN EARTH #139-IP	5 1 - ALUMINUM GLASS GUARD
2 1 - PREFORMED METAL PANEL, COLOUR 1 PARKER JOHNSTON KYNAR - CHAMPAGNE METALLIC	5 2 - GLASSMETAL GUARD (JULIET BALCONY)
2 2 - PREFORMED METAL PANEL, COLOUR 2 VICWEST - FUSAIN QC 16072	6 1 - FIXED SUN SHADE
2 3 - PREFORMED METAL PANEL, COLOUR 3 VICWEST - CAMBRIDGE WHITE QC 16161	7 1 - ASPHALT SHINGLES MALARKEY - 3-TAB SHINGLES - STORM GREY
3 1 - TRIPLE GLAZE WINDOWS	
4 1 - WOODSIDING SIKKENS - #078 NATURAL ON CEDAR	

HCMA

TOWNLEY LODGE
1780 Townley Street, Saanich, BC
DATE: 17 MAY 2017
ISSUE DESCRIPTION: 1 ISSUED FOR BC HOUSING REVIEW, 2 ISSUED FOR REZONING RESUBMISSION

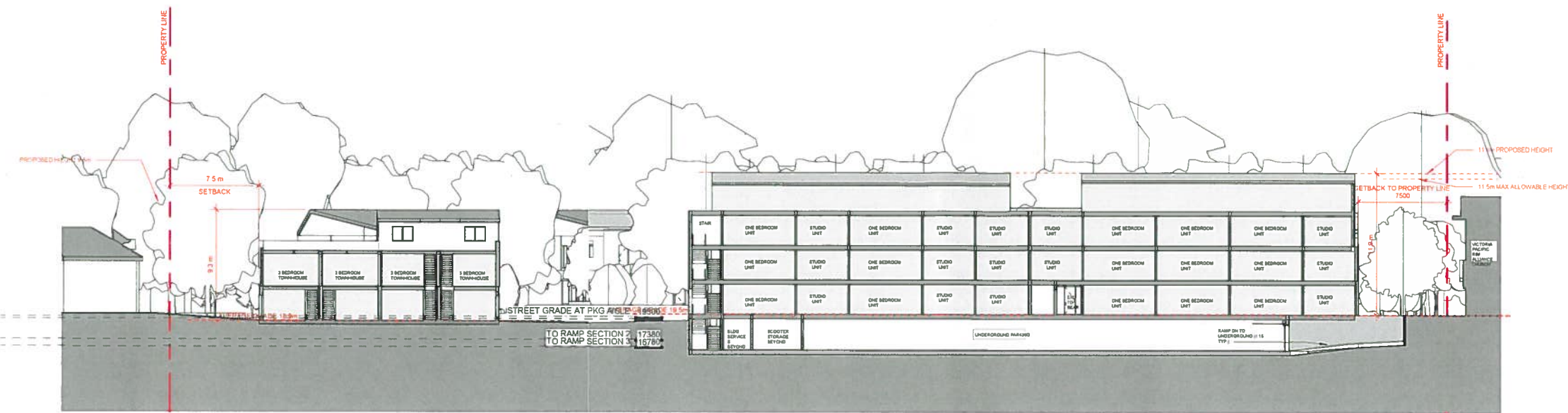


RECEIVED
AUG 01 2017
PLANNING DEPT.
DISTRICT OF SAANICH

THC ELEVATIONS

DATE: dd/mm/yyyy
A5.4
SCALE: 1:100

HCMA Architecture + Design
400 - 675 West Hastings Street
Vancouver BC V6B 1N2 Canada
Tel: 604.732.6620
www.hcma.ca



26 E-W SITE SECTION - A - APARTMENT & TH B
1:200



27 N-S SITE SECTION - A - APARTMENT & TH C
1:200

HCMA

TOWNLEY PLACE
1780 Townley Street, Saanich, BC

DATE
17 MAY 2017
29 MAY 2017
31 JUL 2017

ISSUE DESCRIPTION
1 ISSUED FOR BC HOUSING REVIEW
2 ISSUED FOR REZONING RESUBMISSION
3 ISSUED FOR REZONING RESUBMISSION



RECEIVED
 AUG 01 2017
 PLANNING DEPT.
 DISTRICT OF SAANICH

SITE SECTIONS

DATE: 2017/5/10
A6.1
 SCALE: 1:200

HCMA Architecture + Design
 Suite 300 - 569 Johnson Street
 Victoria BC V8W 1M2 Canada
 T 250 382 6650
 W hcma.ca



1 STREETScape ELEVATION
1:1



2 RENDERING - SITE ENTRY
1:1



3 RENDERING - APARTMENT ENTRY AND FACADE DETAILING
1:1

HCMA

DATE
17 MAY 2017
29 MAY 2017
31 JUL 2017

TOWNLEY PLACE
1780 Townley Street, Saanich, BC

ISSUE DESCRIPTION
1 ISSUED FOR BC HOUSING REVIEW
2 ISSUED FOR REZONING REUBMISSION
3 ISSUED FOR REZONING REUBMISSION



STREETScape ELEVATION

RECEIVED
AUG 01 2017
PLANNING DEPT
DISTRICT OF SAANICH

DATE: 2017/5/10

A7.1

SCALE: 1:1