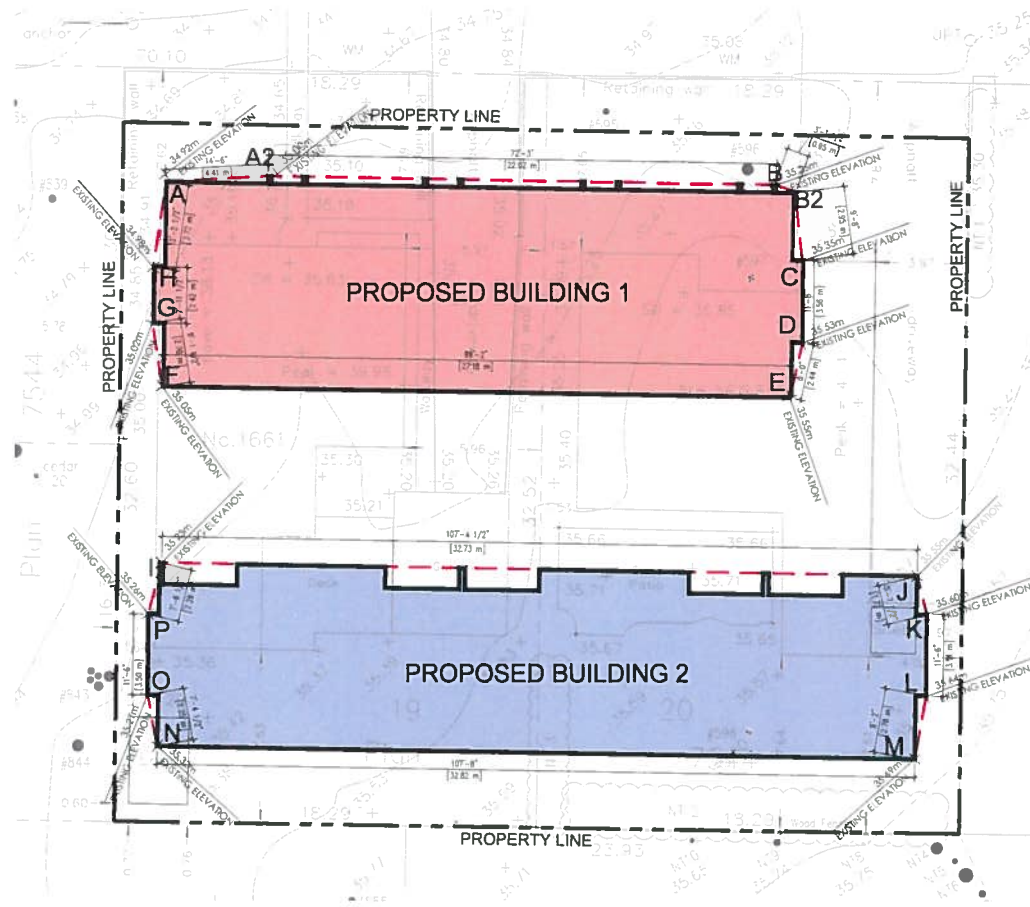


# FREEMAN AVENUE



**1 KEY PLAN**  
A101 1:150

**LEGEND**

PROPERTY LINE	---
SETBACK LINE	---
SEWER (re. CIVL)	---
WATER (re. CIVL)	---

**AVERAGE GRADE CALCULATIONS - BUILDING 1**  
\*elevation points start at north-west corner and continues counter clockwise around building

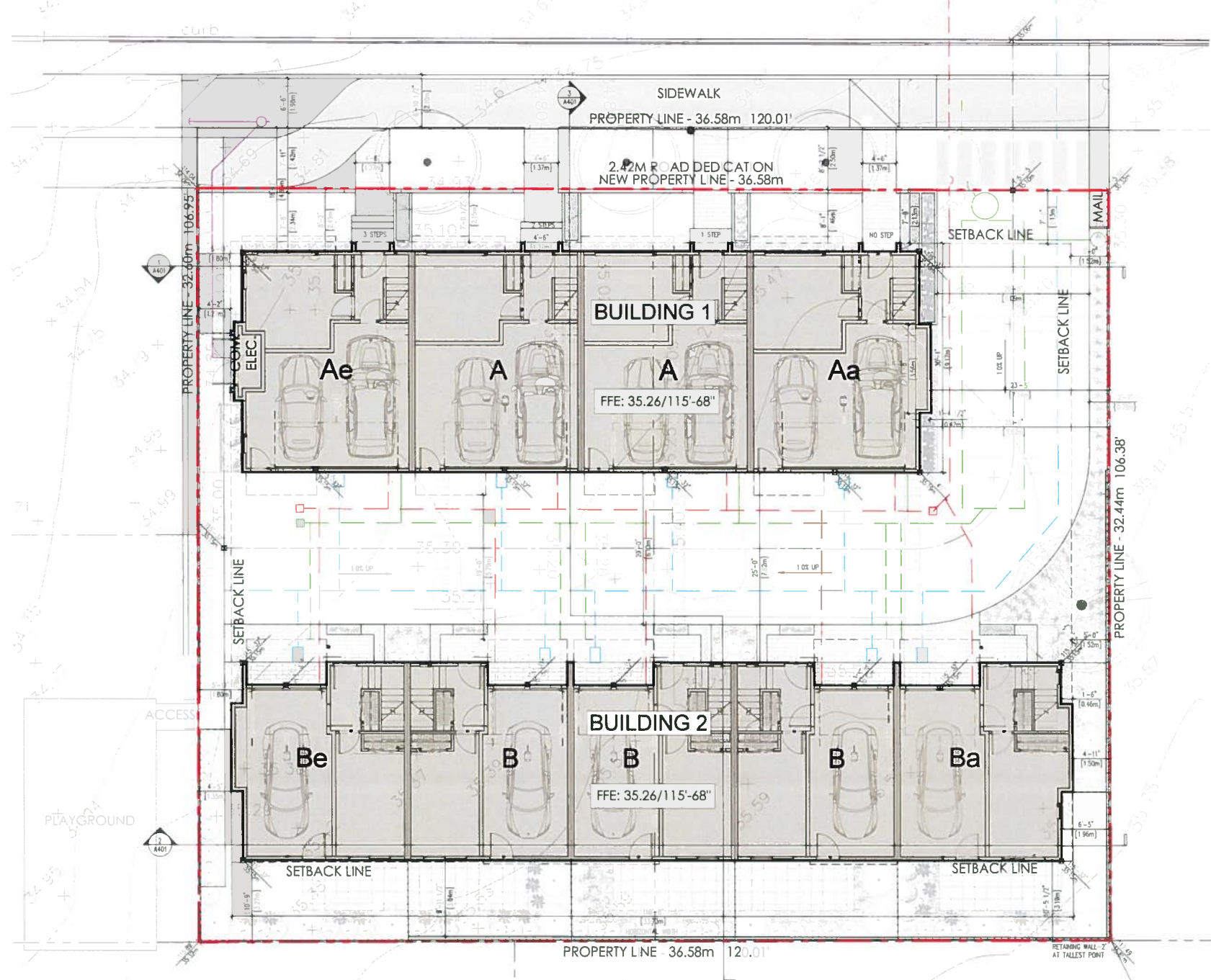
ELEVATION (M)	LENGTH (M)	GRADE CALCULATIONS	
A 34.92	A2 35.00	$(34.92 + 35.00) - 2 \times 4.41m =$	154.17
A2 35.00	B 35.25	$(35.00 + 35.25) - 2 \times 22.02m =$	773.45
B 35.25	B2 35.25	$(35.25 + 35.25) - 2 \times 0.95m =$	33.48
B2 35.25	C 35.35	$(35.25 + 35.35) - 2 \times 0.95m =$	104.13
C 35.35	D 35.53	$(35.35 + 35.53) - 2 \times 3.56m =$	128.17
D 35.53	E 35.55	$(35.53 + 35.55) - 2 \times 2.44m =$	86.72
E 35.55	F 35.05	$(35.55 + 35.05) - 2 \times 27.18m =$	959.45
F 35.05	G 35.02	$(35.05 + 35.02) - 2 \times 2.78m =$	97.40
G 35.02	H 34.98	$(35.02 + 34.98) - 2 \times 2.42m =$	84.70
H 34.98	A 34.92	$(34.98 + 34.92) - 2 \times 4.04m =$	141.20
<b>TOTAL</b>	<b>72.75</b>		<b>2560.87</b>
<b>AVERAGE BUILDING GRADE =</b>		$2560.87 + 72.75 = 35.20m$	

**AVERAGE GRADE CALCULATIONS - BUILDING 2**  
\*elevation points start at north-west corner and continues counter clockwise around building

ELEVATION (M)	LENGTH (M)	GRADE CALCULATIONS	
I 35.23	J 35.55	$(35.23 + 35.55) - 2 \times 32.73m =$	1158.31
J 35.55	K 35.60	$(35.55 + 35.60) - 2 \times 1.72m =$	81.19
K 35.60	L 35.64	$(35.60 + 35.64) - 2 \times 3.51m =$	125.03
L 35.64	M 35.69	$(35.64 + 35.69) - 2 \times 2.79m =$	99.51
M 35.69	N 35.32	$(35.69 + 35.32) - 2 \times 32.82m =$	1185.27
N 35.32	O 35.27	$(35.32 + 35.27) - 2 \times 2.25m =$	79.41
O 35.27	P 35.26	$(35.27 + 35.26) - 2 \times 3.50m =$	123.43
P 35.26	I 35.23	$(34.26 + 35.23) - 2 \times 2.29m =$	79.57
<b>TOTAL</b>	<b>81.61</b>		<b>2891.72</b>
<b>AVERAGE BUILDING GRADE =</b>		$2891.72 + 81.61 = 35.43m$	

**NATURAL GRADE (M)**

A	34.92
A2	35.00
B	35.25
B2	35.25
C	35.35
D	35.53
E	35.55
F	35.05
G	35.02
H	34.98
I	35.23
J	35.55
K	35.60
L	35.64
M	35.69
N	35.32
O	35.27
P	35.26



**2 SITE PLAN**  
A101 1:100



**3 CONTEXT ELEVATION**  
A101 NTS

COPYRIGHT RESERVED ALL PARTS OF THIS DRAWING ARE THE EXCLUSIVE PROPERTY OF WVA ARCHITECTS LTD AND SHALL NOT BE USED WITHOUT THE ARCHITECT'S PERMISSION ALL DIMENSIONS SHALL BE VERIFIED BY THE CONTRACTOR BEFORE COMMENCING WORK



OWNER/CLIENT

**ABSTRACT**  
developments

GENERAL NOTES

**RECEIVED**  
AUG 24 2020  
PLANNING DEPT.  
DISTRICT OF SAANICH

1 ISSUED FOR RE-ZONING & DEVELOPMENT PERMIT 20/08/17  
NO ISSUE Y/M/D



**WVA ARCHITECTS**

VAN 301 - 1444 Alborni Street Vancouver, V6G 2Z4  
VIC 104 - 3212 Jacklin Road Victoria, V8B 0J5  
604 685 3529 office@wva.arch.ca | wva.arch.ca

PROJECT NAME  
**FREEMAN TOWNHOMES**

PROJECT ADDRESS  
**1661 & 1663 FREEMAN AVENUE, SAANICH, BC**

DRAWING TITLE  
**SITE PLAN & AVERAGE GRADE CALCULATIONS**

PROJECT NO 20025 DRAWN BY XV/AM  
SCALE 1:300 REVIEW BY DM  
DWG NO **A101**