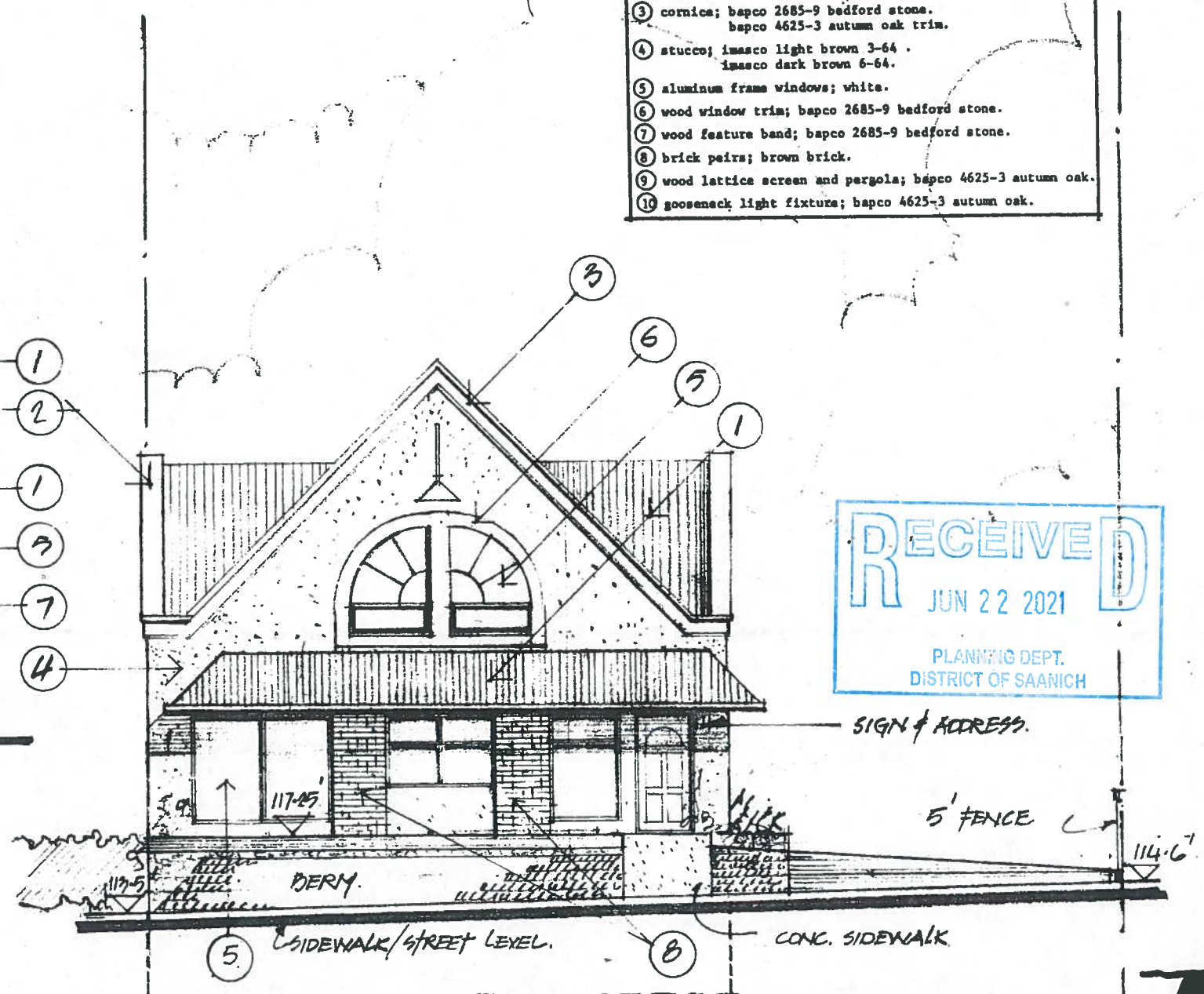
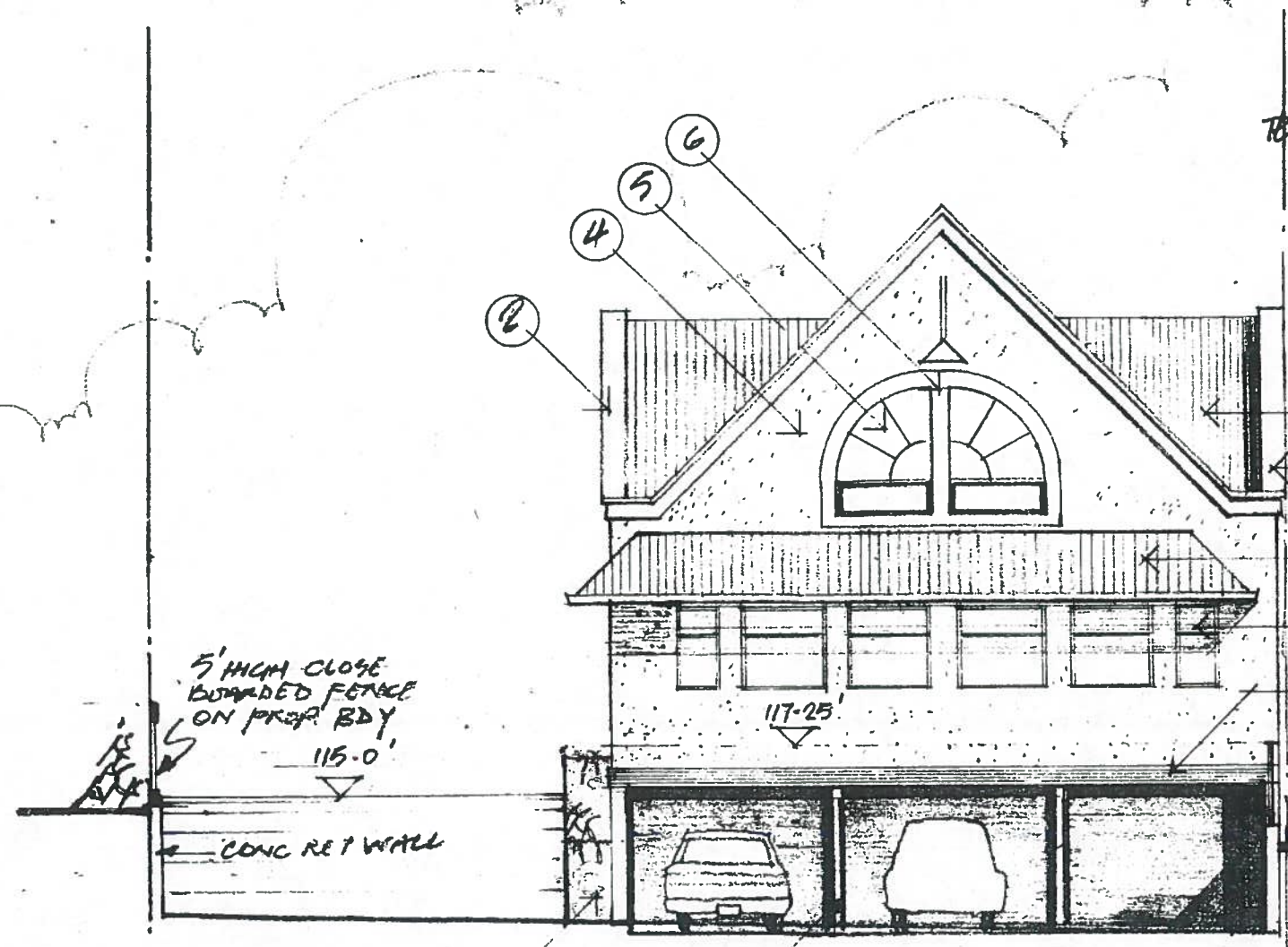


MATERIALS	
①	prefin. metal roofing; skyline blue.
②	prefin. metal flashing; skyline blue.
③	cornice; bapco 2685-9 bedford stone. bapco 4625-3 autumn oak trim.
④	stucco; imasco light brown 3-64. imasco dark brown 6-64.
⑤	aluminum frame windows; white.
⑥	wood window trim; bapco 2685-9 bedford stone.
⑦	wood feature band; bapco 2685-9 bedford stone.
⑧	brick piers; brown brick.
⑨	wood lattice screen and pergola; bapco 4625-3 autumn oak.
⑩	gooseneck light fixture; bapco 4625-3 autumn oak.



RECEIVED
 JUN 22 2021
 PLANNING DEPT.
 DISTRICT OF SAANICH

5' HIGH CLOSE
 BOARDED FENCE
 ON PROP. BDY
 115'-0"

CONC RET WALL

EXP. AGG CONC.
 PLANTER.
 CONCRETE COLUMNS.

SIGN & ADDRESS.

5' FENCE
 114'-6"

⑤ SIDEWALK/STREET LEVEL.
 ⑥ CONC. SIDEWALK

SOUTH

* SCREEN FENCE OMITTED FOR CLARITY:

NORTH 7
 10 - 1800 Clisach Avenue
 Victoria, B.C., Canada V8P 2H1
 (250) 477-4225
 Vic Davies Architect Ltd.

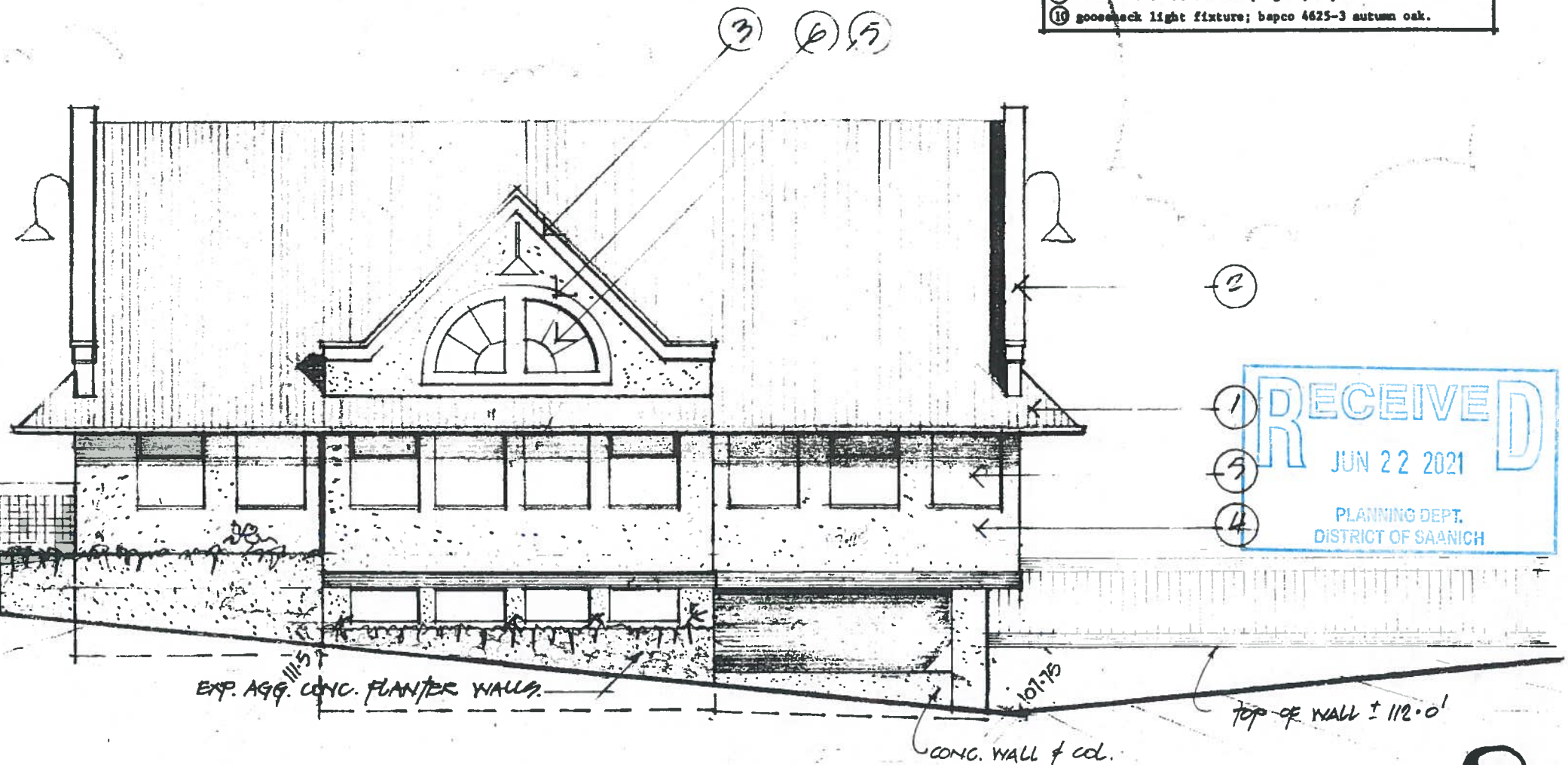
VIC DAVIES ARCHITECT LTD.: PROPOSED NEW PREMISES 1581 CHURCH AVE. SAANICH.

SCALE 1/8" REPRESENTS 1'-0"
 ISSUED FOR BUILDING PERMIT 9/11/89
 REVISED F.F.V. 11/0" & REVISED GRADES 22/8/89.

MATERIALS	
1	prefin. metal roofing; skyline blue.
2	prefin. metal flashing; skyline blue.
3	cornice; bapco 2685-9 bedford stone. bapco 4625-3 autumn oak trim.
4	stucco; inasco light brown 3-64 . inasco dark brown 6-64.
5	aluminum frame windows; white.
6	wood window trim; bapco 2685-9 bedford stone.
7	wood feature band; bapco 2685-9 bedford stone.
8	brick piers; brown brick.
9	wood lattice screen and pergola; bapco 4625-3 autumn oak.
10	goose-neck light fixture; bapco 4625-3 autumn oak.

CHURCH

ROAD WIDENING



RECEIVED
JUN 22 2021
PLANNING DEPT.
DISTRICT OF SAANICH

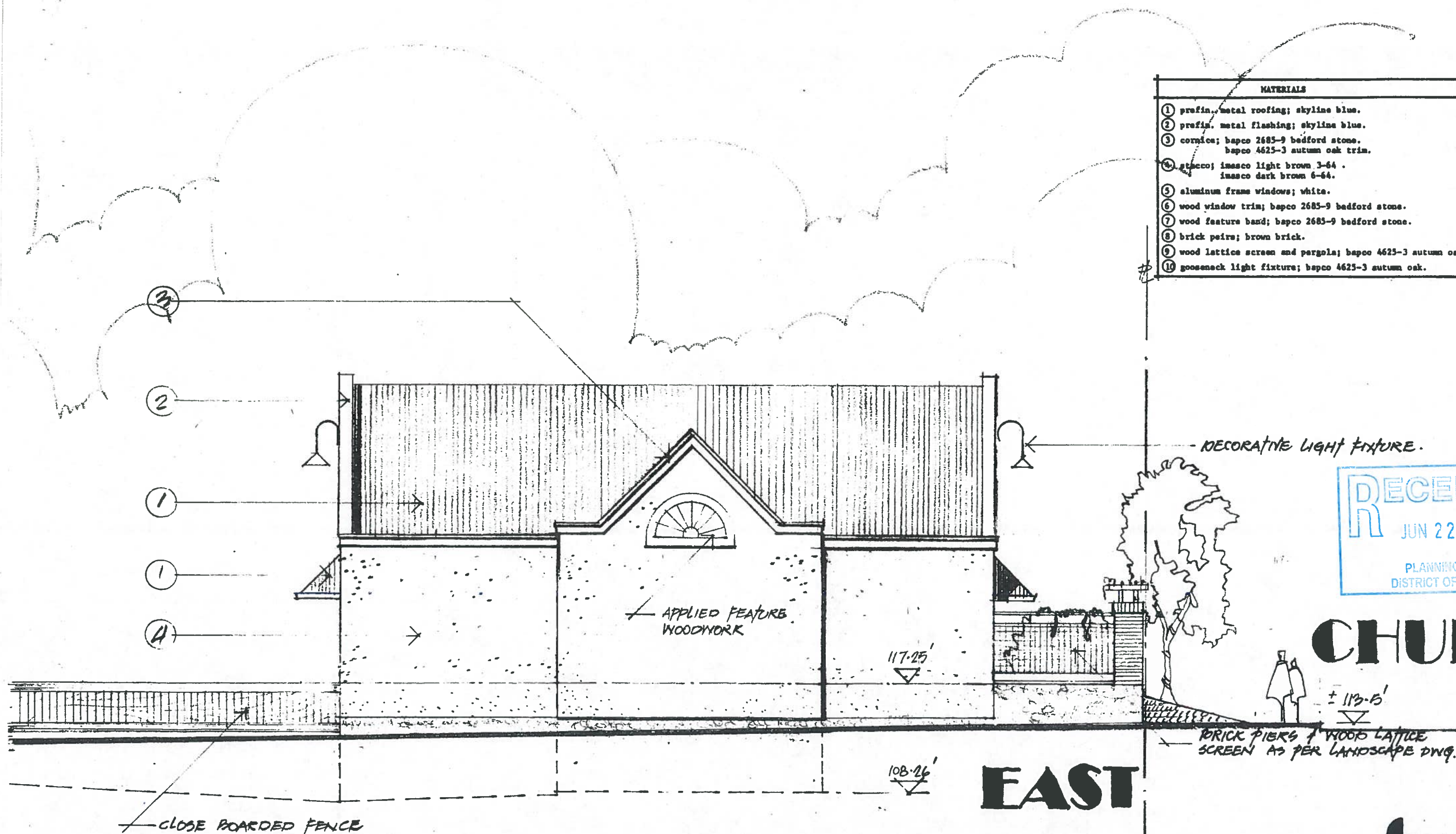
WEST



VIC DAVIES ARCHITECT LTD : PROPOSED NEW PREMISES 1981 CHURCH AVE. SAANICH.

10 - 1880 Church Avenue
Victoria, B.C., Canada V8P 2H1
(250) 477-4278
Vic Davies Architect Ltd.

SCALE 1/8" REM 1/6" ISSUED FOR BUILDING PERMIT 7/11/09
RAISED F.F.L. 1'-0" & REVISED GRADES.



MATERIALS	
①	prefin. metal roofing; skyline blue.
②	prefin. metal flashing; skyline blue.
③	cornice; bapco 2685-9 bedford stone. bapco 4625-3 autumn oak trim.
④	stucco; inasco light brown 3-64 . inasco dark brown 6-64.
⑤	aluminum frame windows; white.
⑥	wood window trim; bapco 2685-9 bedford stone.
⑦	wood feature band; bapco 2685-9 bedford stone.
⑧	brick piers; brown brick.
⑨	wood lattice screen and pergola; bapco 4625-3 autumn oak.
⑩	gooseneck light fixture; bapco 4625-3 autumn oak.

DECORATIVE LIGHT FIXTURE.

RECEIVED
JUN 22 2021
PLANNING DEPT.
DISTRICT OF SAANICH

CHURCH

EAST

BRICK PIERS & WOOD LATTICE
SCREEN AS PER LANDSCAPE DWG.

CLOSE BOARDED FENCE

VIC DAVIES ARCHITECT LTD: PROPOSED NEW PREMISES 1581 CHURCH AVE: SAANICH.

10 - 1880 Church Avenue
Victoria, B.C., Canada V8P 2H1
(604) 477-4255
Vic Davies Architect Ltd.

SCALE 1/8" = 1'-0". ISSUED FOR BUILDING PERMIT 9/11/89
RAISED F.F.L. 1'-0" & REVISED GRADES. 22/8/89.