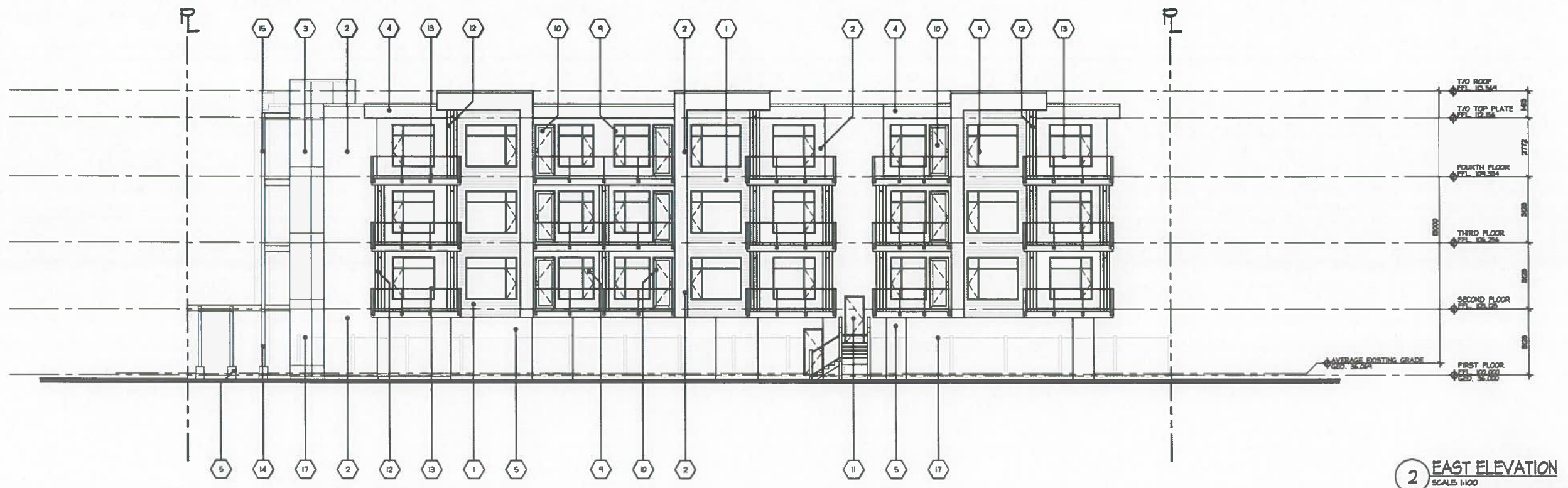
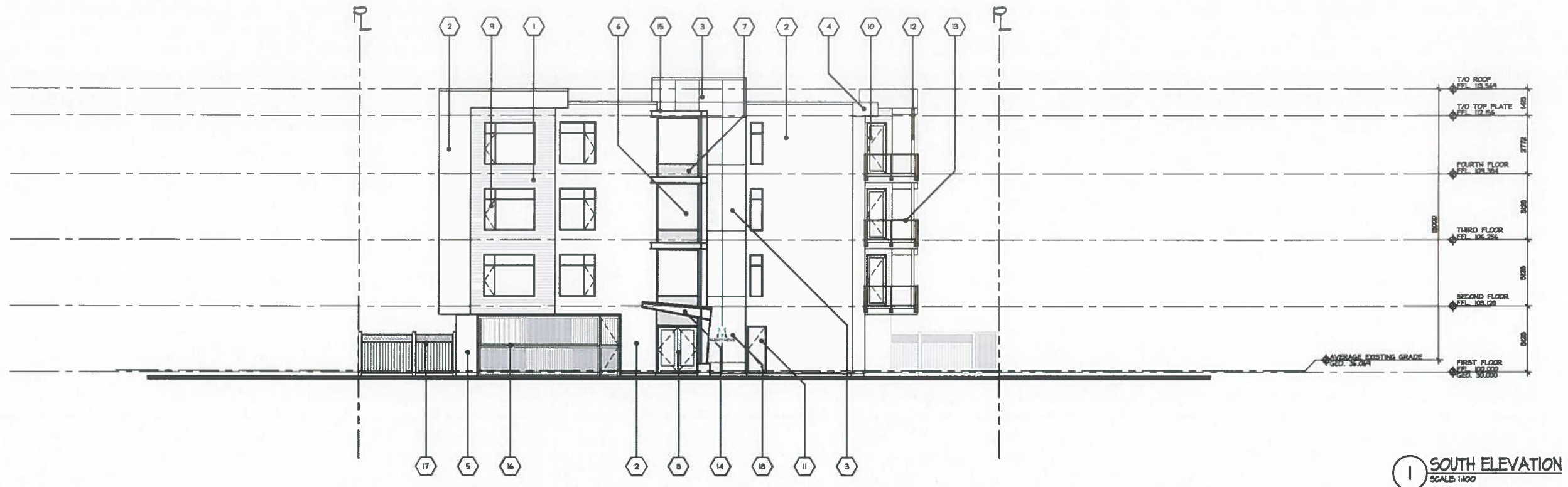


MATERIALS SCHEDULE	
1	HOOD GRAIN LONGBOARD METAL CLADDING
2	ACRYLIC STUCCO
3	TRESPA PANEL CLADDING
4	PAINTED FIBER-CEMENT PANEL FASCIA
5	SEALED EXPOSED CONCRETE
6	ALUMINUM CURTAIN WALL GLAZING
7	ALUMINUM CURTAIN WALL SPANDREL PANEL
8	GLAZED ALUMINUM DOOR
9	DOUBLE PANELED VINYL WINDOWS
10	DOUBLE PANELED VINYL DOORS
11	METAL DOOR - PAINTED
12	BAU POST - CLEAR FINISH CEDAR
13	PRE-FINISHED ALUMINUM & GLASS GUARDRAIL
14	GLAZED AND PAINTED METAL CANOPY
15	DECORATIVE PAINTED METAL H-FLANGE FRAME
16	PAINTED METAL OVERHEAD SECURITY GATE W/ PAN DOOR
17	CLEAR FINISH CEDAR FENCE
18	BUILDING SIGN



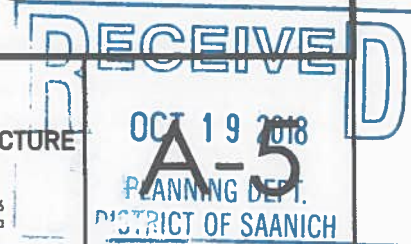
**VARSITY MEWS - 1560 CHURCH AVE.
SOUTH & EAST ELEVATIONS**

SAANICH, B.C.

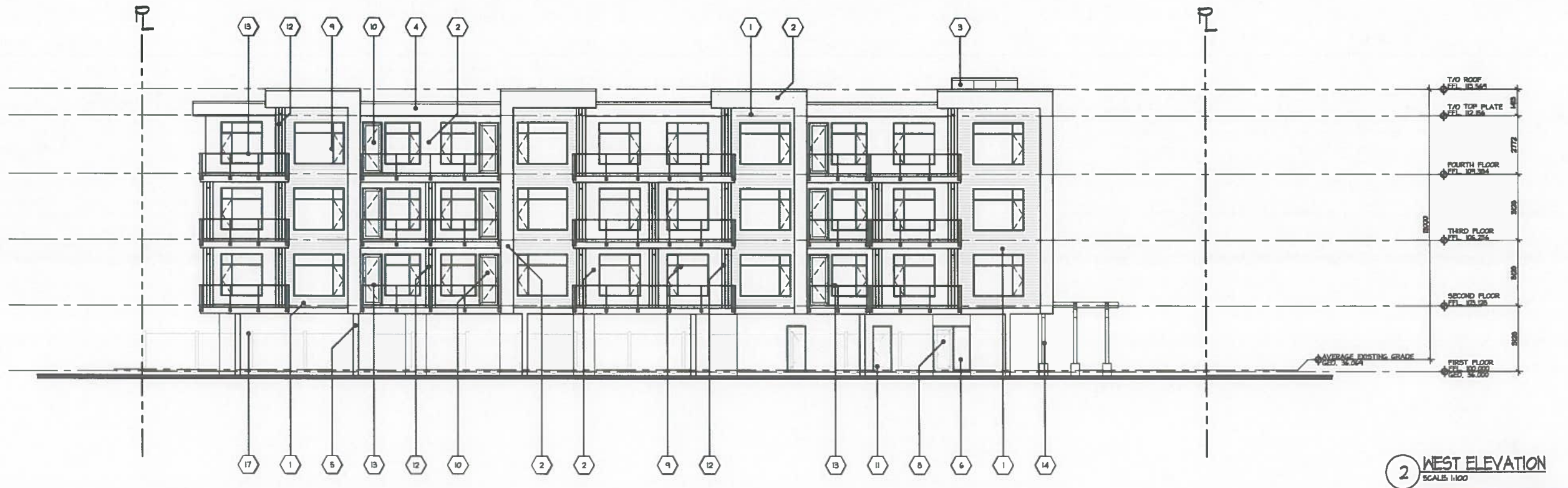
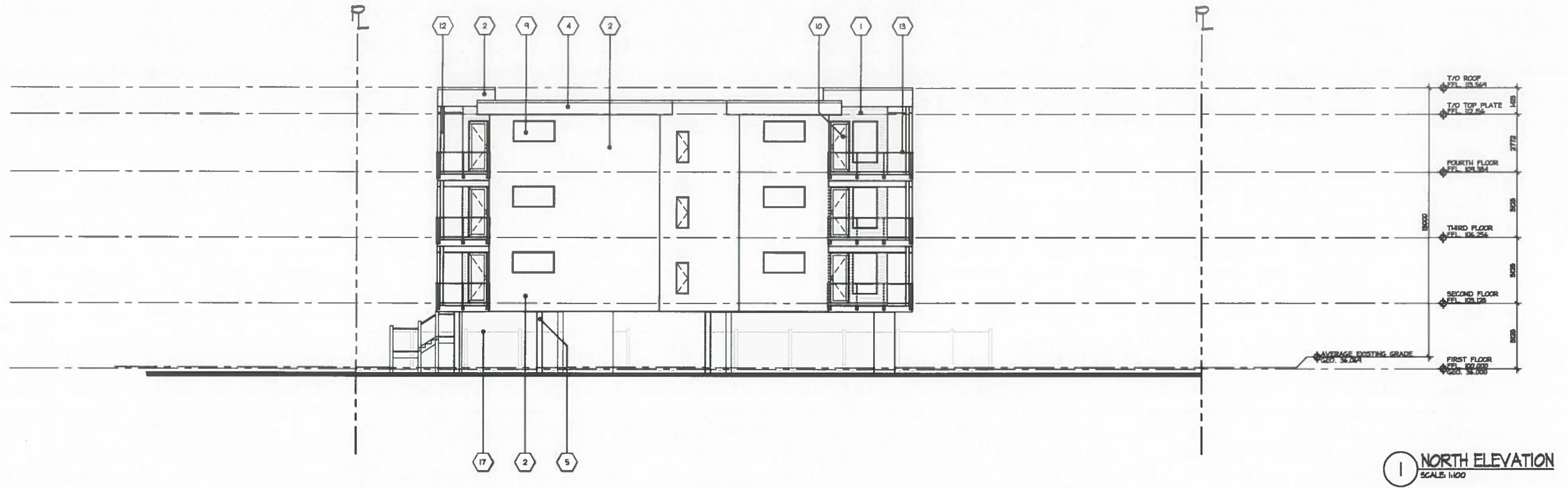
SCALE: 1:100

2018-01

RE-I.F. D.P.
2018-10-17



MATERIALS SCHEDULE	
1	WOOD GRAIN LONGBOARD METAL CLADDING
2	ACRYLIC STUCCO
3	TRESPA PANEL CLADDING
4	PAINTED FIBER-CEMENT PANEL FASCIA
5	SEALED EXPOSED CONCRETE
6	ALUMINUM CURTAIN WALL GLAZING
7	ALUMINUM CURTAIN WALL SPANDREL PANEL
8	GLAZED ALUMINUM DOOR
9	DOUBLE PANELED VINYL WINDOWS
10	DOUBLE PANELED VINYL DOORS
11	METAL DOOR - PAINTED
12	BAU POST - CLEAR FINISH CEDAR
13	PRE-FINISHED ALUMINUM & GLASS GUARDRAIL
14	GLAZED AND PAINTED METAL CANOPY
15	DECORATIVE PAINTED METAL H-FLANGE FRAME
16	PAINTED METAL OVERHEAD SECURITY GATE W/ PAN DOOR
17	CLEAR FINISH CEDAR FENCE
18	BUILDING SIGN



VARSITY MEWS - 1560 CHURCH AVE.
NORTH & WEST ELEVATIONS
 SAANICH, B.C. SCALE: 1:100 2018-01

RE-I.F. D.P.
 2018-10-17



VDA ARCHITECTURE LIMITED
 3388A Tennyson Ave. | Victoria, BC | V8Z 3P6
 T:250-477-4255 | mail@vda.ca | www.vda.ca

