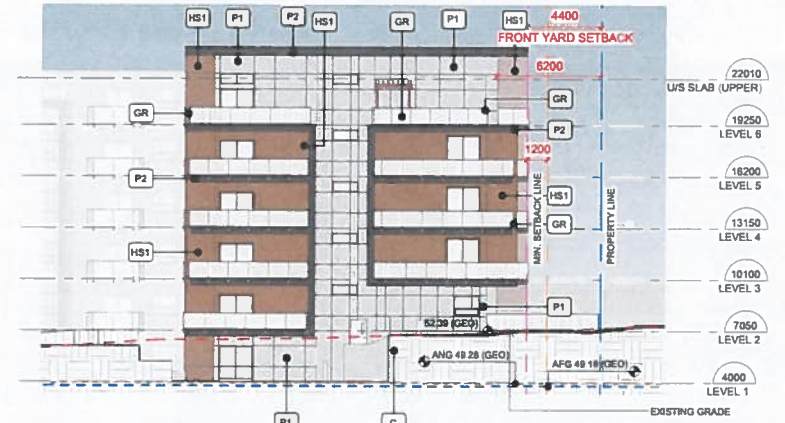


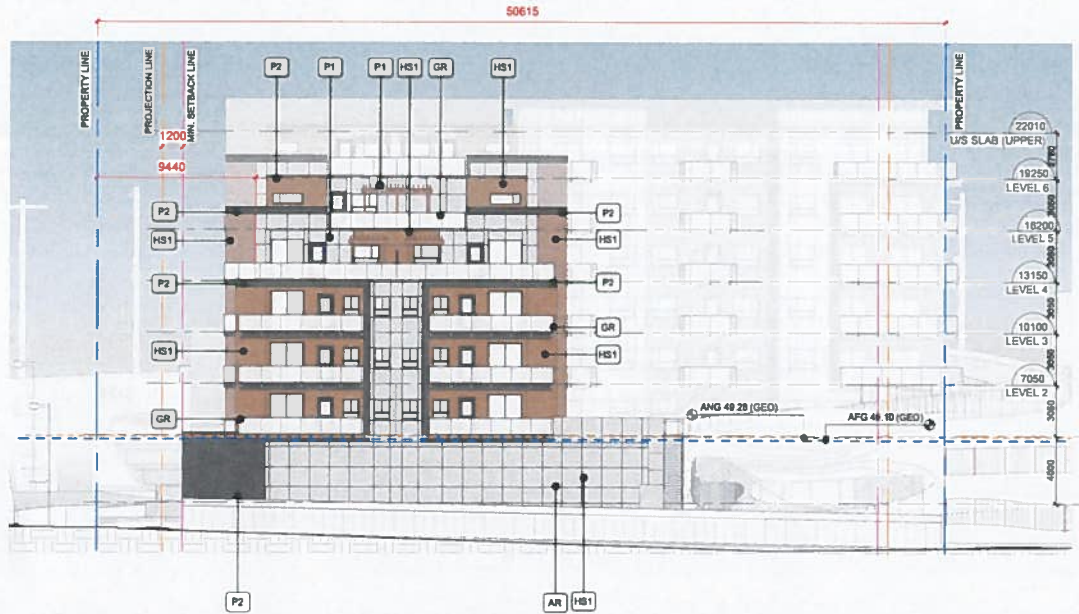
215.1m<sup>2</sup> UNPROTECTED OPENINGS OF 978m<sup>2</sup> EXPOSED BUILDING FACE @ 24.3m = 22% OF 100% (ALLOWED)

1 EXTERIOR ELEVATION - NORTH  
1 : 200



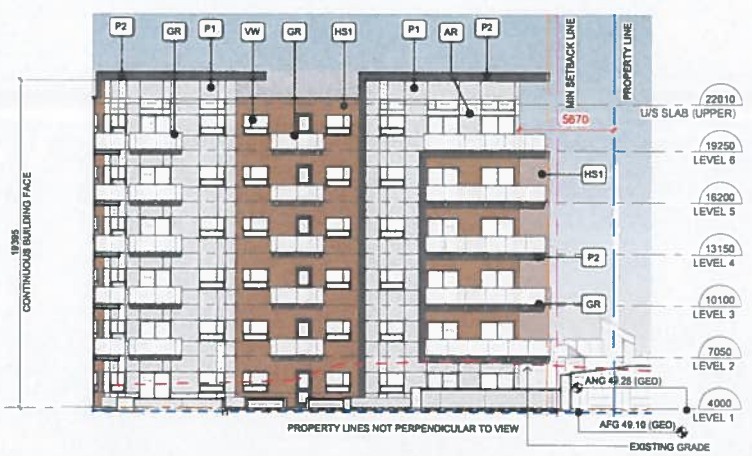
44.8m<sup>2</sup> UNPROTECTED OPENINGS OF 299m<sup>2</sup> EXPOSED BUILDING FACE @ 5.6m = 15% OF 40% (ALLOWED)

2 EXTERIOR ELEVATION - NORTH (END)  
1 : 200



75m<sup>2</sup> UNPROTECTED OPENINGS OF 300m<sup>2</sup> EXPOSED BUILDING FACE @ 6m = 25% OF 52% (ALLOWED)

3 EXTERIOR ELEVATION - EAST (END)  
1 : 200

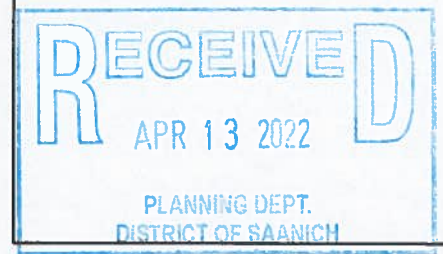


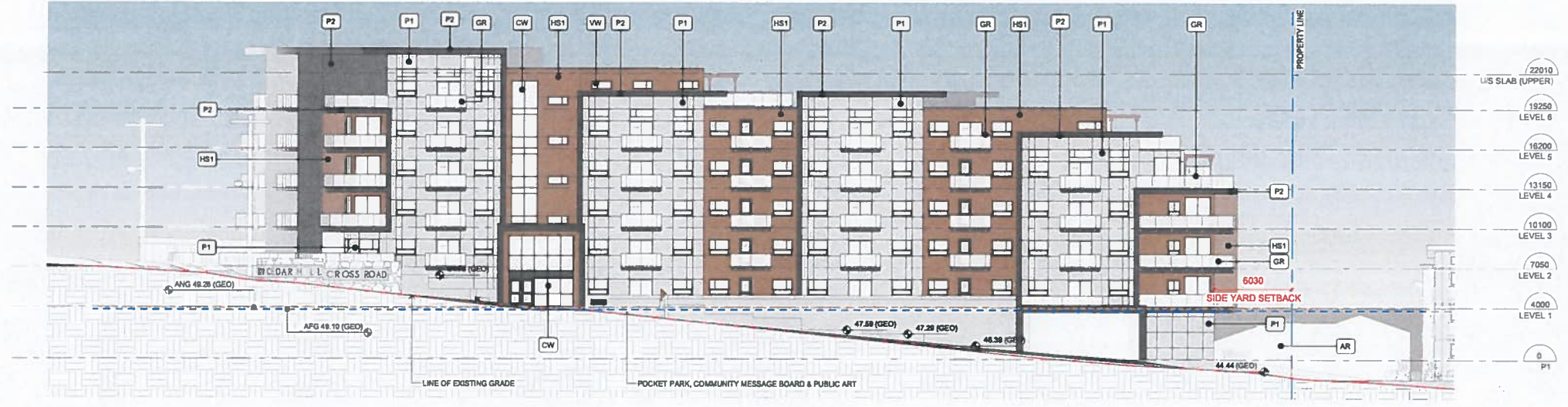
\*INTERIOR BUILDING FACE

4 EXTERIOR ELEVATION - EAST  
1 : 200

ELEVATION KEY NOTES

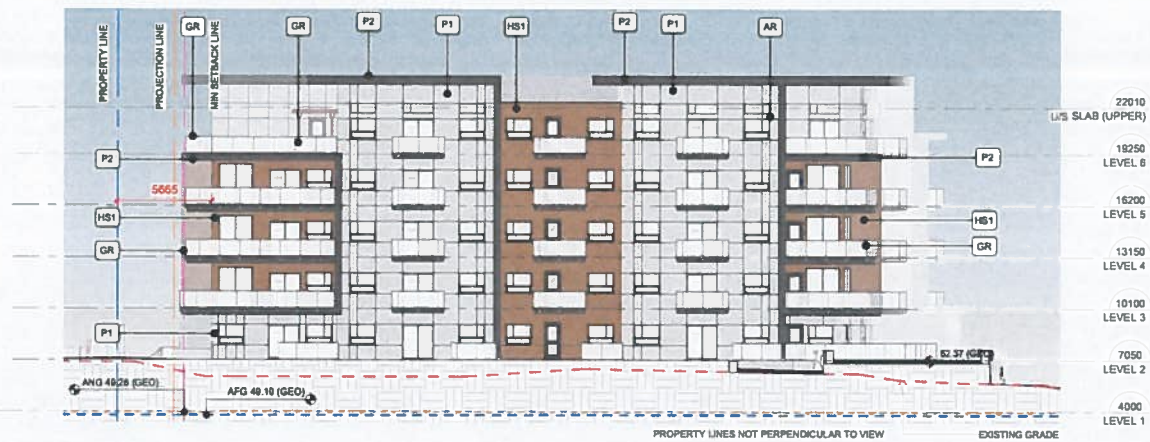
Key Value	Keynote Text
AR	ALUMINUM REVEAL - BLACK ANODIZED
C	CONCRETE - SANDBLASTED FINISH
CW	CURTAINWALL - BLACK ANODIZED
GR	ALUMINUM GUARDRAIL - GLAZED - BLACK ANODIZED
HS1	HORIZONTAL SIDING - WOODGRAIN
P1	PANEL COLOUR 1 - WHITE
P2	PANEL COLOUR 2 - CHARCOAL
VW	ALUMINUM GLAZED VINYL WINDOW - BLACK ANODIZED





366m<sup>2</sup> UNPROTECTED OPENINGS OF 1200m<sup>2</sup> EXPOSED BUILDING FACE @ 9.4m = 28% OF 100% (ALLOWED)

1 EXTERIOR ELEVATION - SOUTH  
1:200



122.6m<sup>2</sup> UNPROTECTED OPENINGS OF 511m<sup>2</sup> EXPOSED BUILDING FACE @ 6.2m = 24% OF 100% (ALLOWED)

2 EXTERIOR ELEVATION - WEST  
1:200

ELEVATION KEY NOTES

**KEYNOTE LEGEND**

Key Value	Keynote Text
AR	ALUMINUM REVEAL - BLACK ANODIZED
C	CONCRETE - SANDBLASTED FINISH
CW	CURTAINWALL - BLACK ANODIZED
GR	ALUMINUM GUARDRAIL - GLAZED - BLACK ANODIZED
HS1	HORIZONTAL SIDING - WOODGRAIN
P1	PANEL COLOUR 1 - WHITE
P2	PANEL COLOUR 2 - CHARCOAL
VW	ALUMINUM CLAD VINYL WINDOW - BLACK ANODIZED

